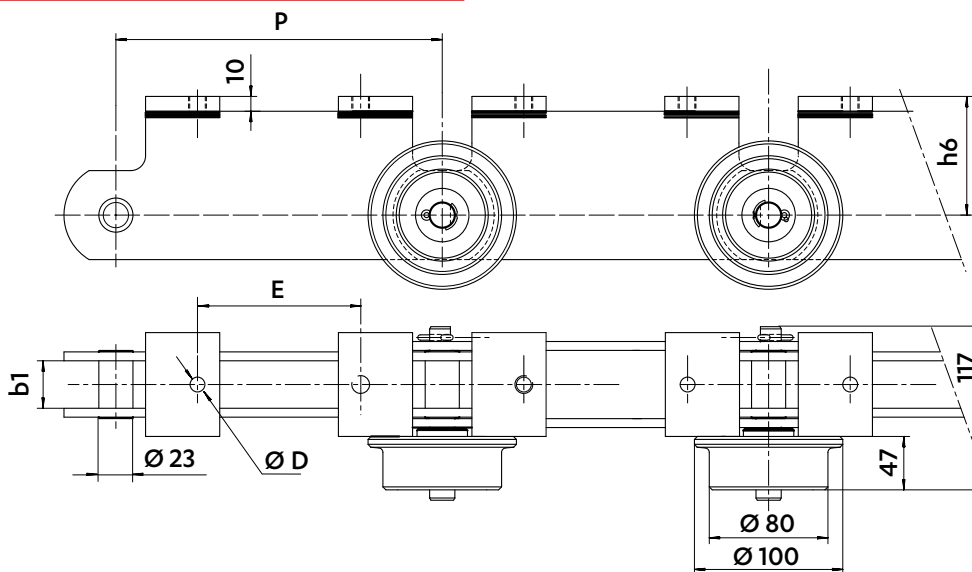


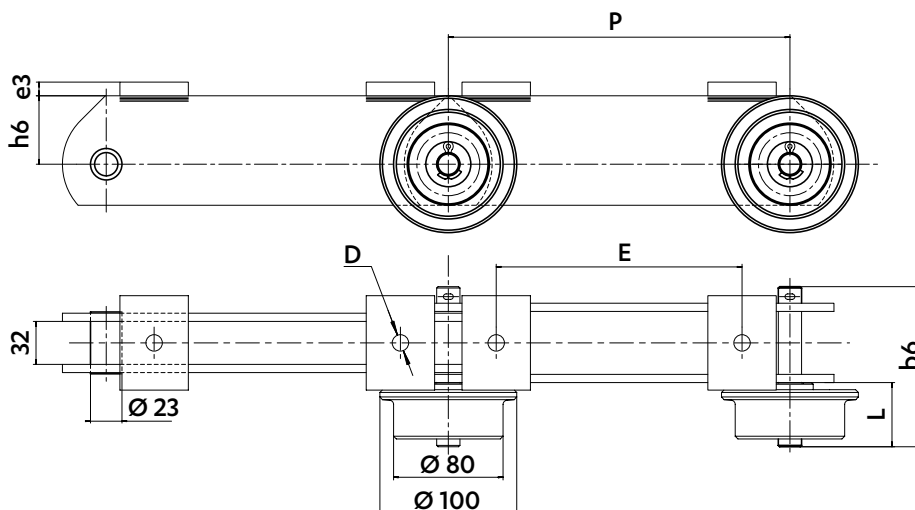


Dimensions in mm

CHAINS FOR FLOOR CONVEYORS



Chain ref	Pitch p	Width between inner plates		Plates h6	Attachments		Min. Breaking load kN
		b1 min.			D	E	
5345-13	220	32		60	12	60	140
5345-18	220	32		60	13	80	140
5345-17	220	32		60	13	80	220
5345-11	220	32		70	12	110	140
5345-30	250	32		70	12	140	140
5499-20	220	28		60	13	80	140
5499-58	220	32		70	M12	110	140



Chain ref	Pitch p	Pins		Plates h6	Attachments			Min. Breaking load kN
		L min.	b6 max.		e3	D	E	
5345-06	250	47	117	50	10	12	180	140
5514-02	250	47	117	60	8	12	150	140
5600-01	270	47	117	55	10	11	200	140
5600-08 (*)	270	55	125	55	10	12	200	140

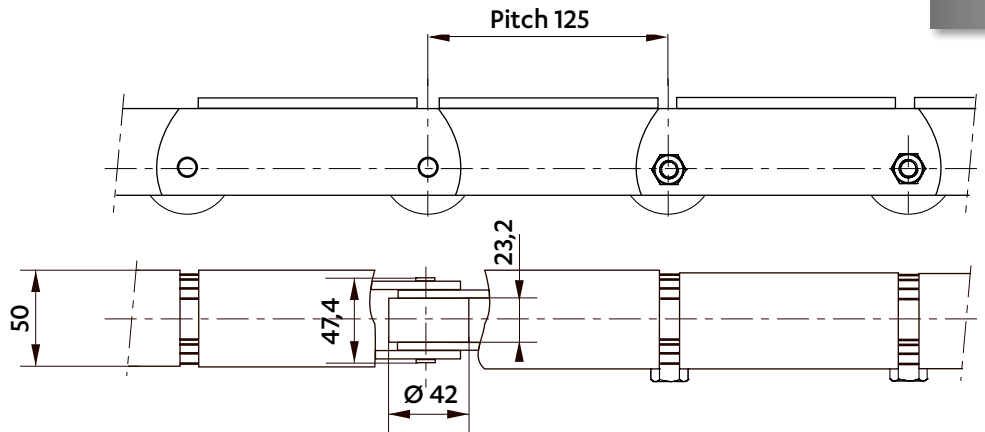
All wheels are with ball bearings, except for (\*) which are in plastic.



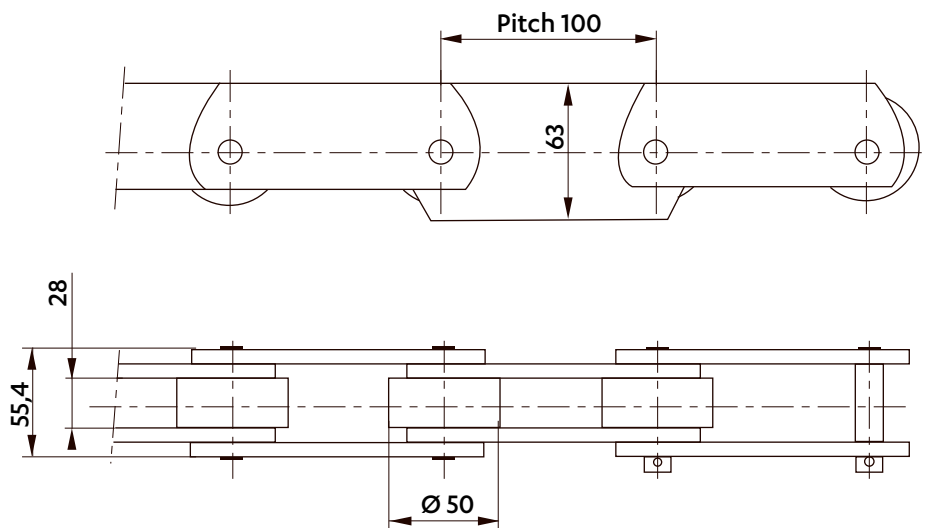
Dimensions in mm

**CHAINS FOR FLOOR CONVEYORS**

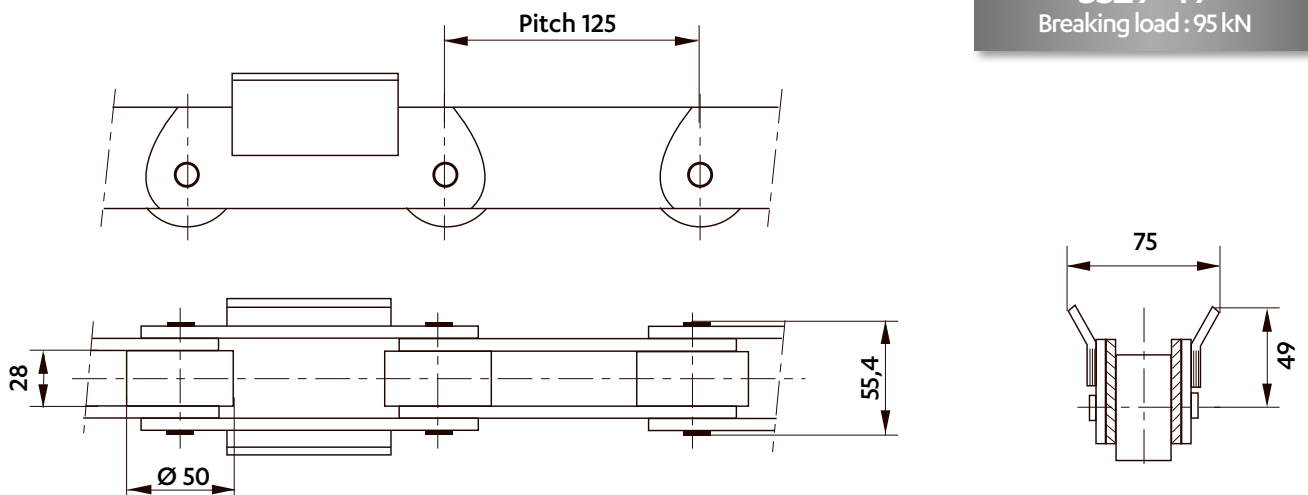
**5293-28**  
Breaking load : 65 kN



**5196-04**  
Breaking load : 95 kN



**5329-49**  
Breaking load : 95 kN



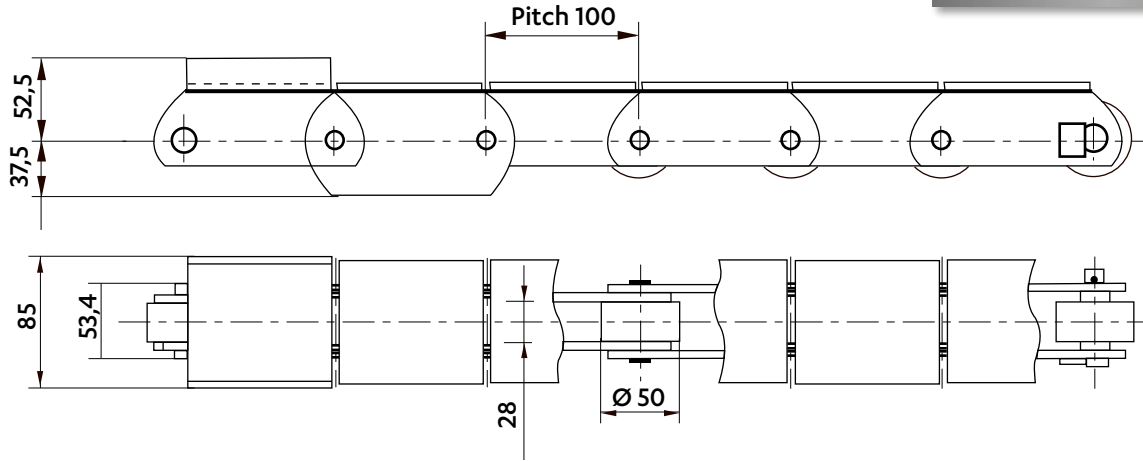


Dimensions in mm

CHAINS FOR FLOOR CONVEYORS

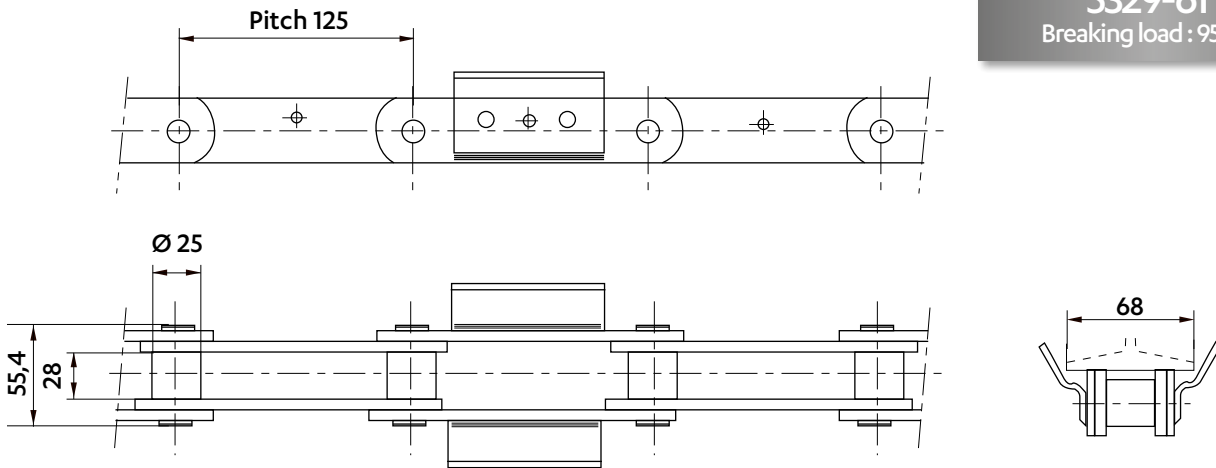
5196-38

Breaking load : 95 kN



5329-61

Breaking load : 95 kN

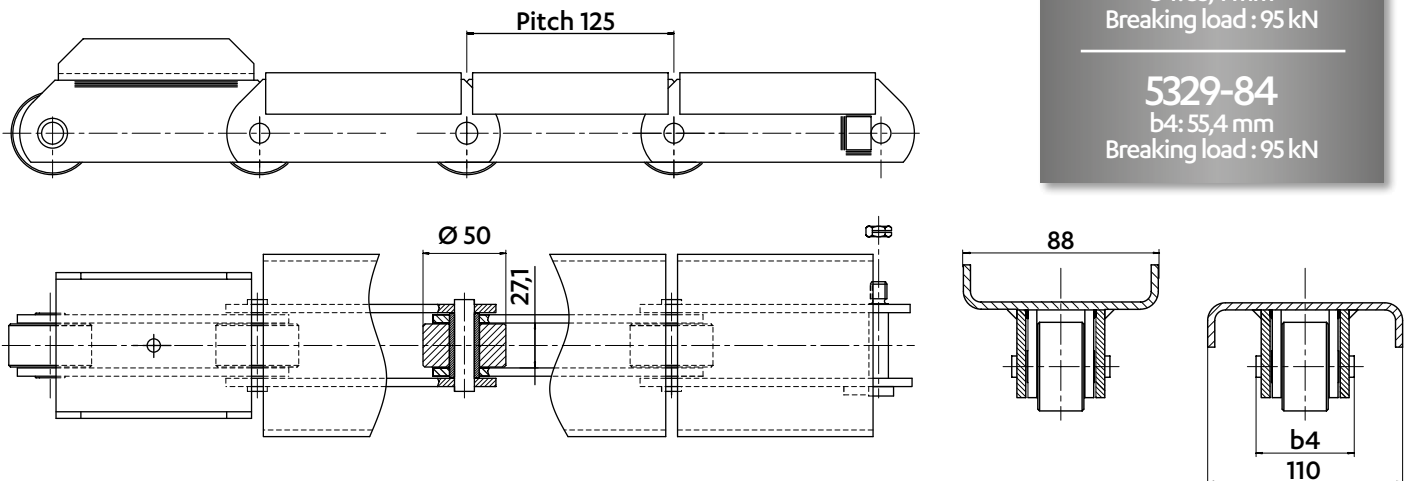


5329-81

b4: 55,4 mm  
Breaking load : 95 kN

5329-84

b4: 55,4 mm  
Breaking load : 95 kN

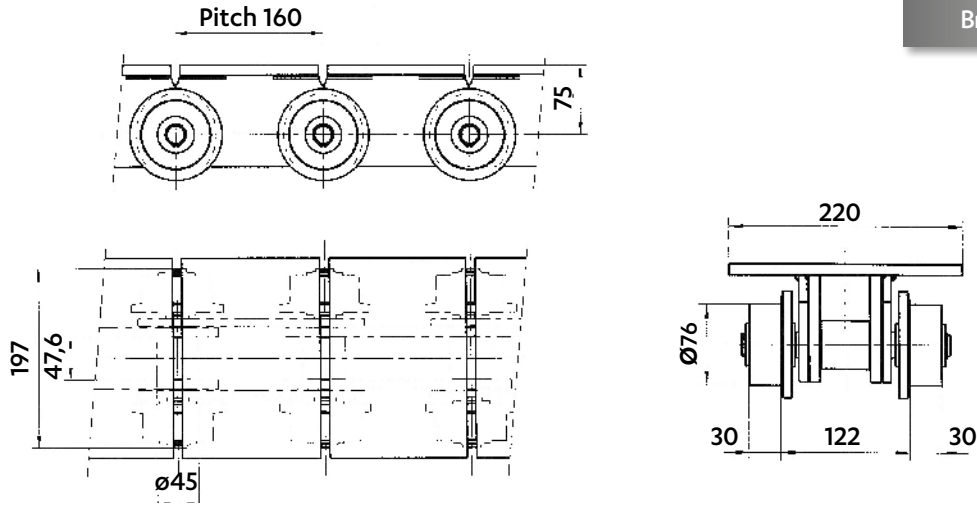




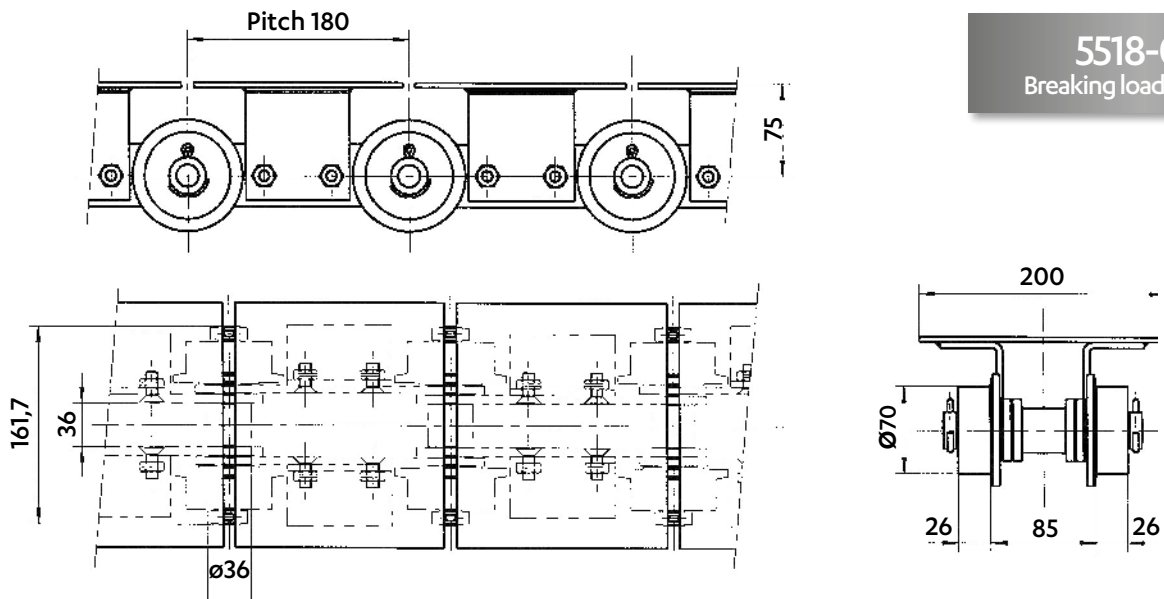
Dimensions in mm

**CHAINS FOR FLOOR CONVEYORS**

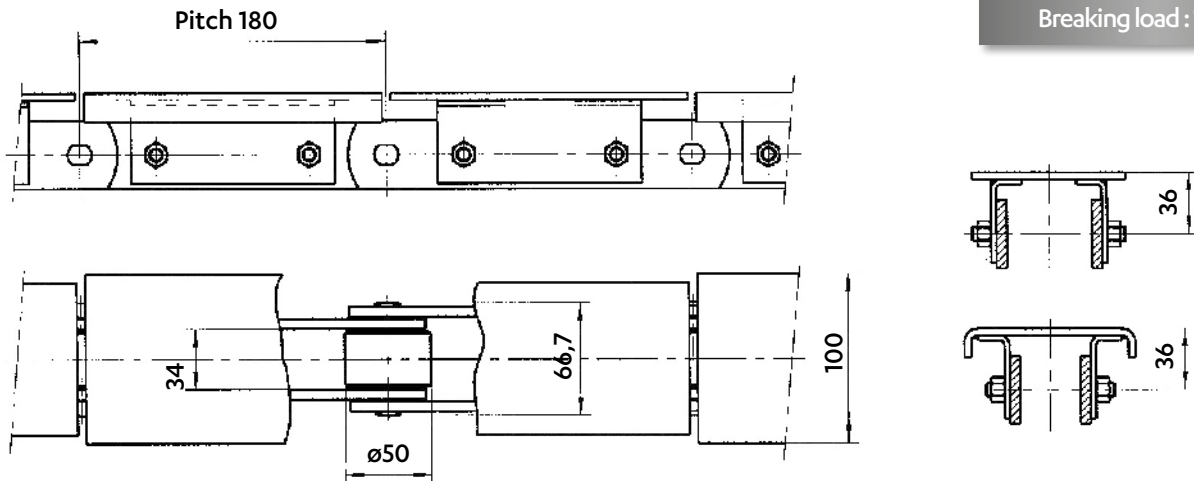
**5441-01**  
Breaking load : 320 kN



**5518-02**  
Breaking load : 200 kN



**5431-03**  
Breaking load : 130 kN



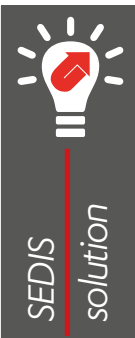
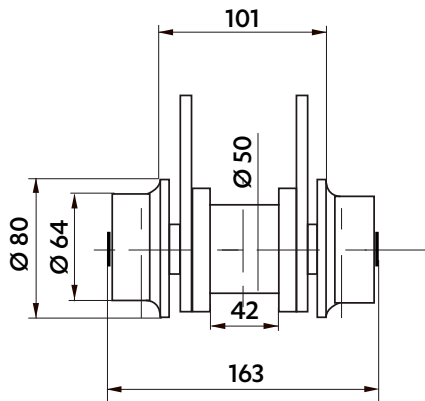
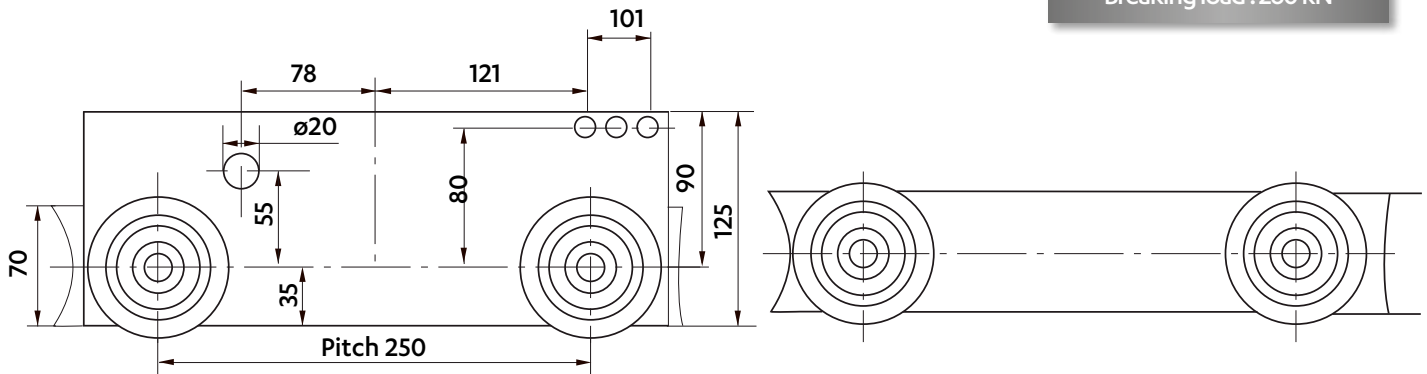
CHAINS FOR THE AUTOMOTIVE INDUSTRY



Dimensions in mm

OVERHEAD CONVEYOR FOR PRE-ASSEMBLED CACHWORKS

**5514-21**  
Breaking load : 260 kN

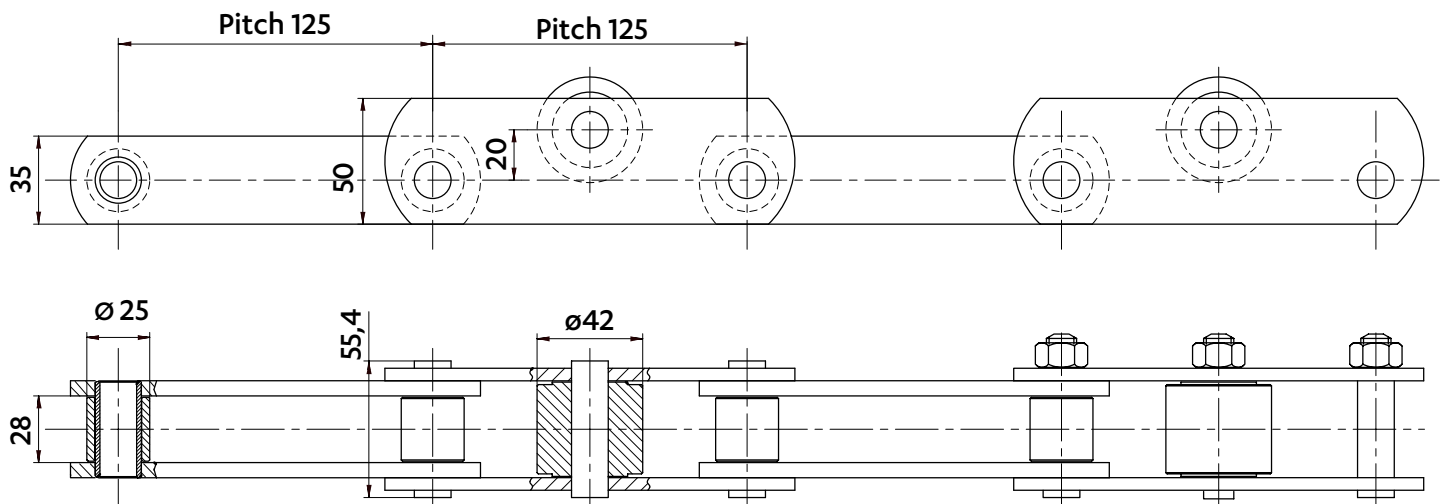


**DELTA® VERTE® CHAIN**

- Self-lubricating bushes
- Delta® pins (anti-wear)
- SEDIS anti-corrosion coating
- Prevents maintenance
- Enhances the service life of the chain

ACCUMULATION CHAIN FOR SKID EJECTION

**5329-45**  
Breaking load : 95 kN

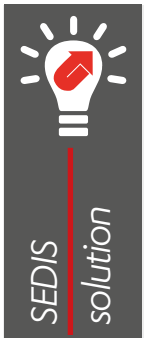
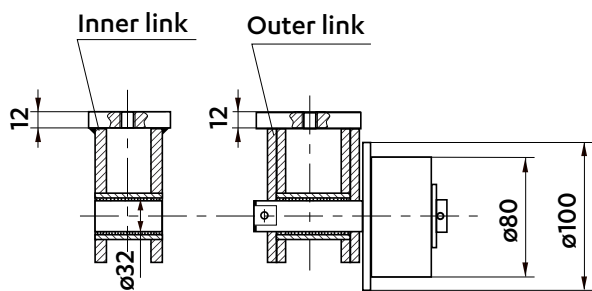
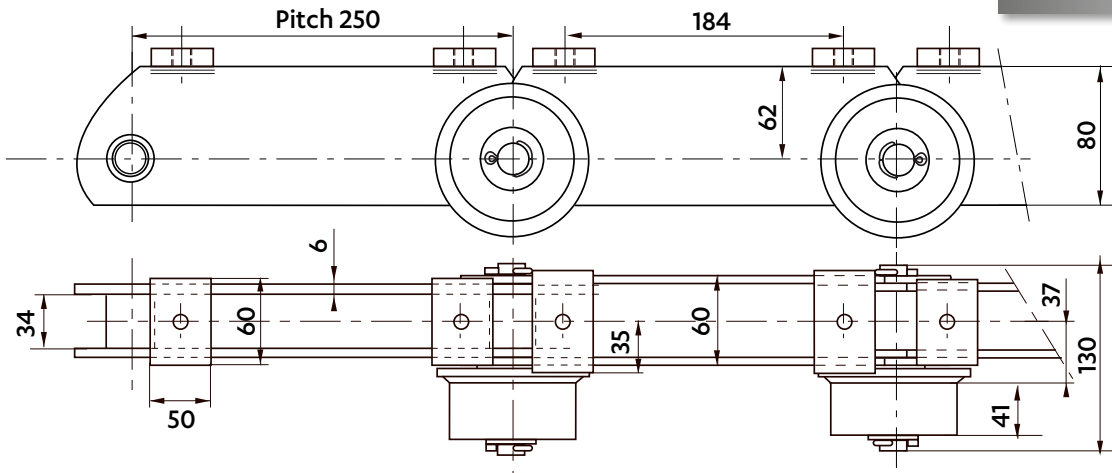




Dimensions in mm

**LEAK-TEST CAR CONVEYOR**

**5514-25**  
Breaking load : 170 kN

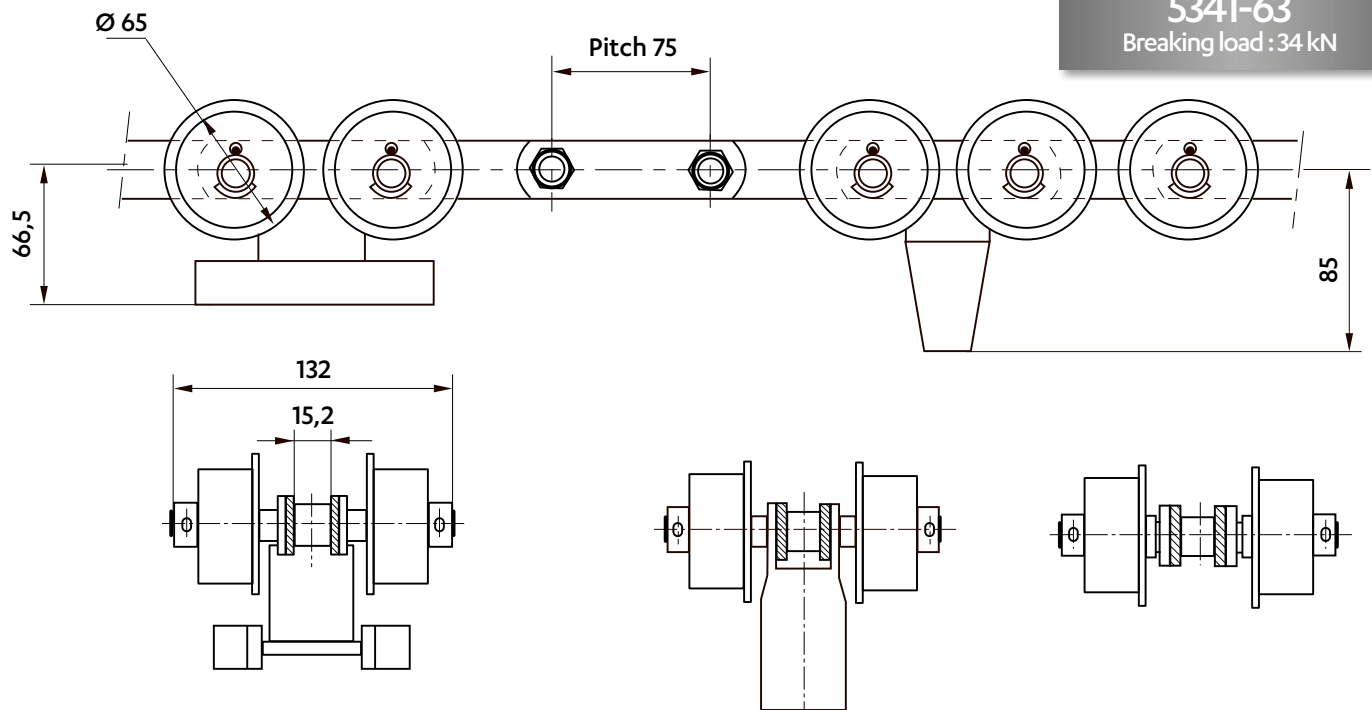


**DELTA® VERTE® CHAIN**

- Self-lubricating bushes
- Delta® pins (anti-wear)
- SEDIS anti-corrosion coating
- Prevents maintenance
- Enhances the service life of the chain

**OVERHEAD CONVEYOR AND SKID EJECTION**

**5341-63**  
Breaking load : 34 kN



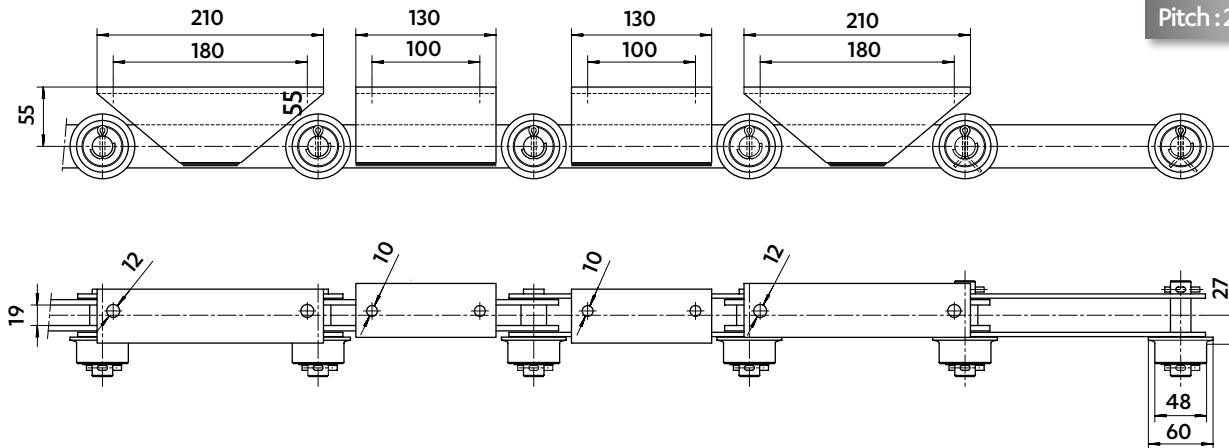
CHAINS FOR THE AUTOMOTIVE INDUSTRY



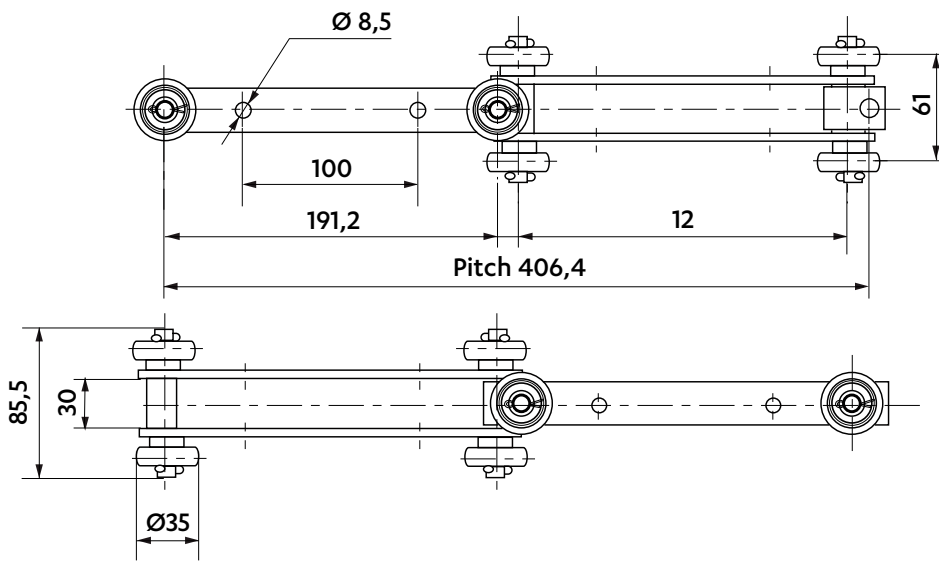
Dimensions in mm

CHAIN FOR THE AUTOMOTIVE INDUSTRY

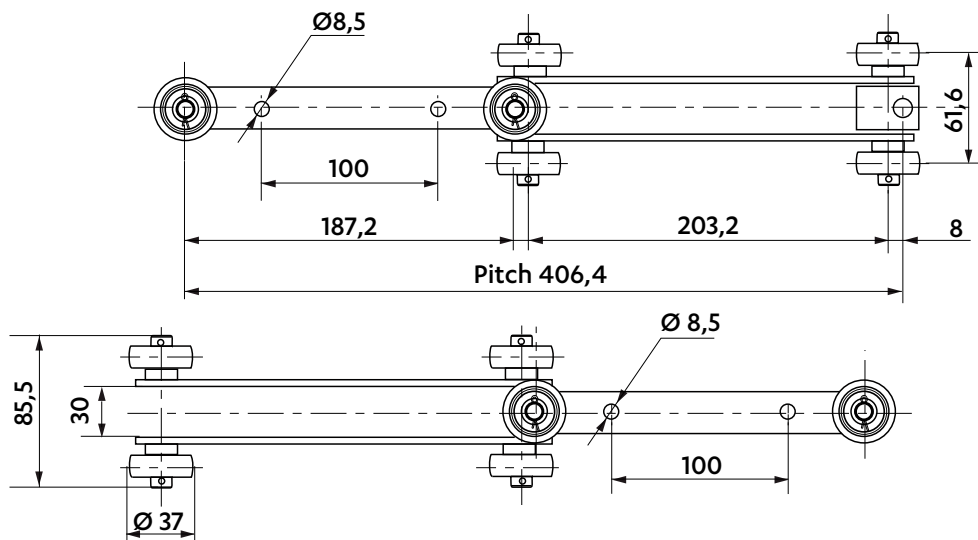
**5565-20**  
Pitch : 200 mm



MULTIDIRECTIONAL CHAINS



**5723-01**  
Breaking load : 40 kN  
Pitch: 406,4 mm (191,2+12+191,2+12)



**5723-02**  
Breaking load : 40 kN  
Pitch: 406,4 mm (187,2+8+203,2+8)

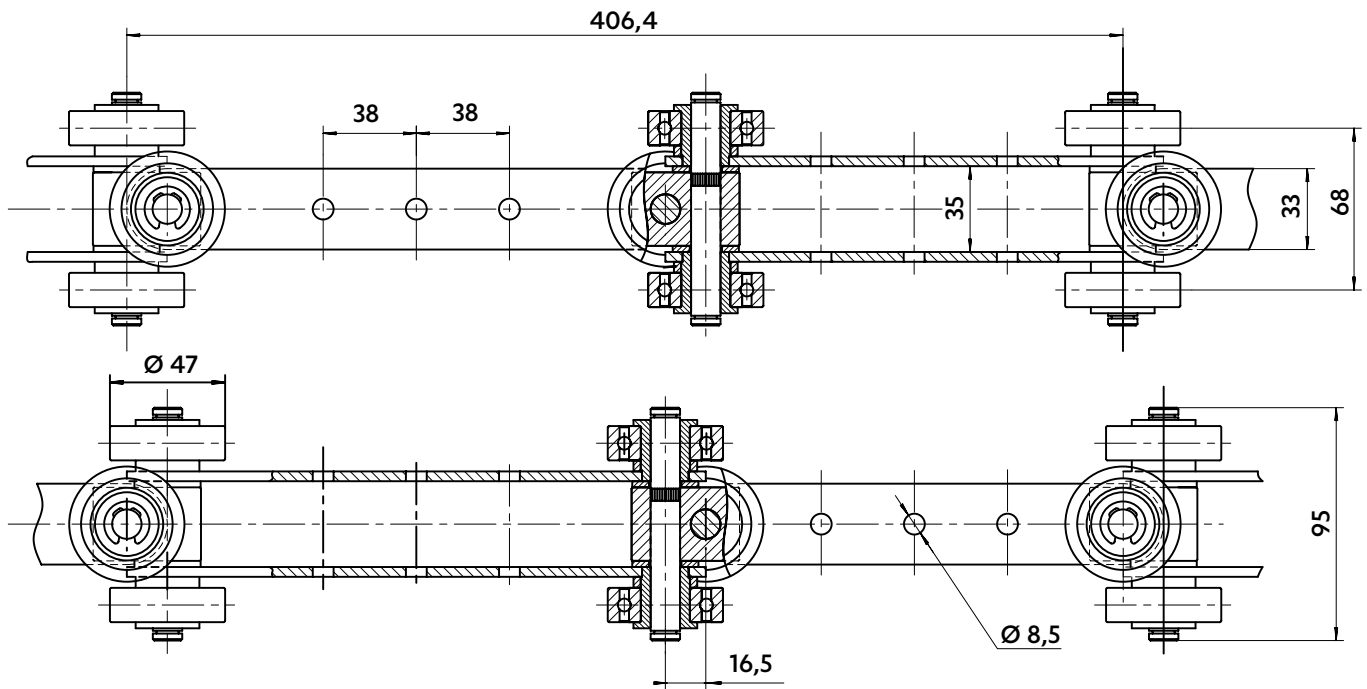




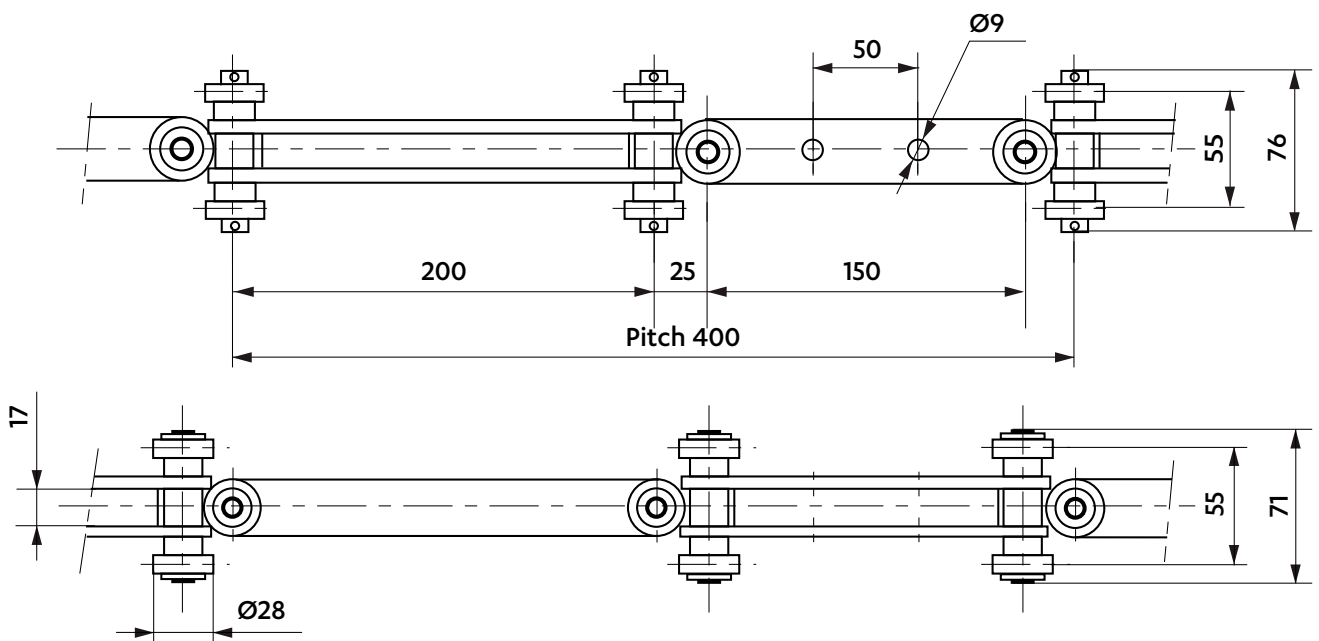
Dimensions in mm

**MULTIDIRECTIONAL CHAINS**

**5723-05**  
Breaking load : 40 kN  
Pitch: 406,4 mm (170,2+16,5+203,2+16,5)



**5680-01**  
Breaking load : 36 kN  
Pitch: 400 mm (200+25+150+25)





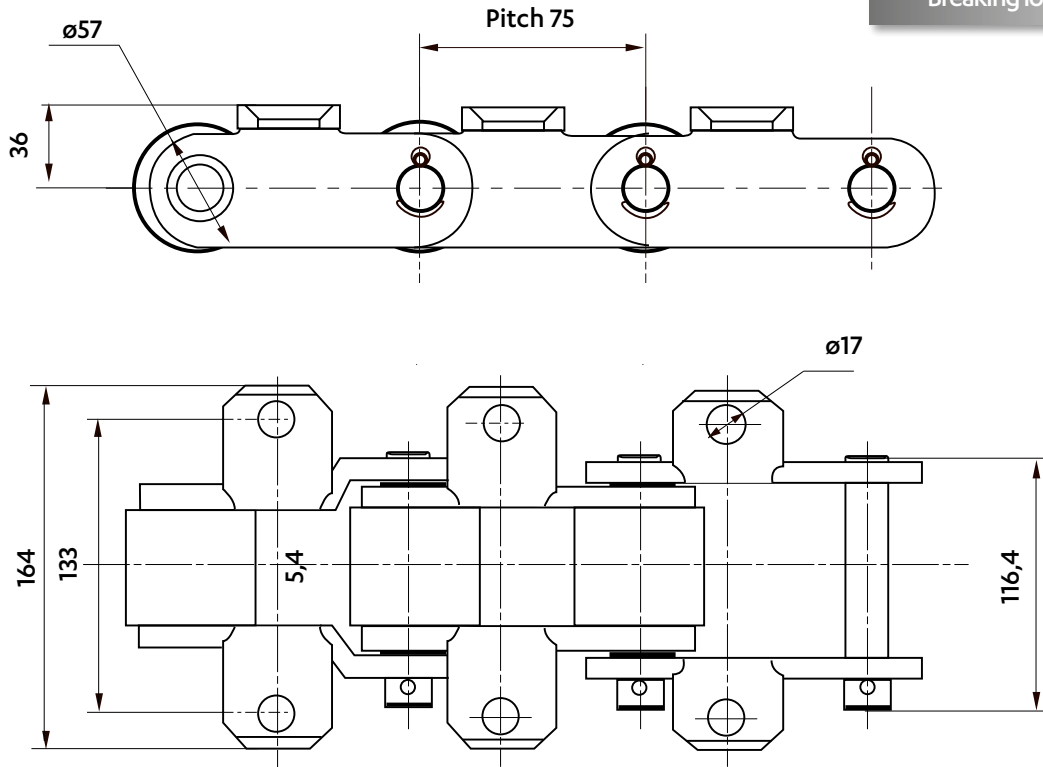


Dimensions in mm

SHOT BLASTING CHAIN

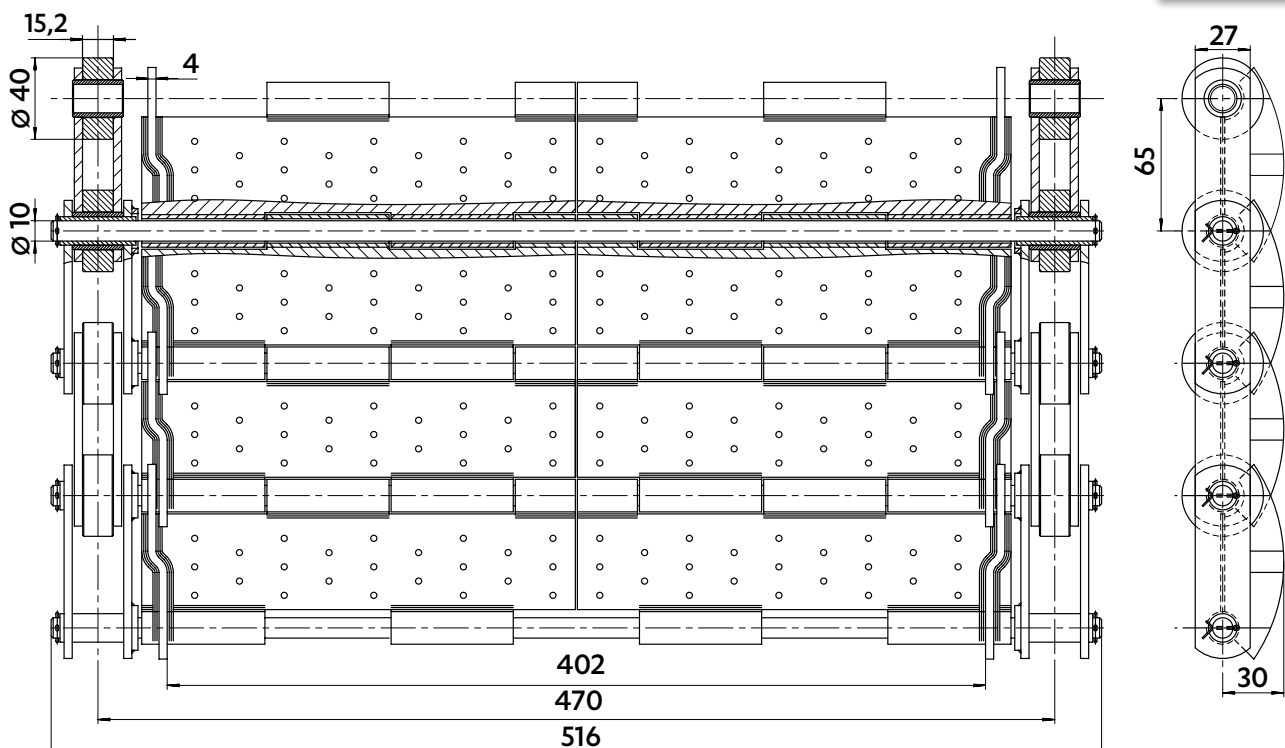
5390-04

Breaking load : 325 kN



CHIP CONVEYOR

5907-01

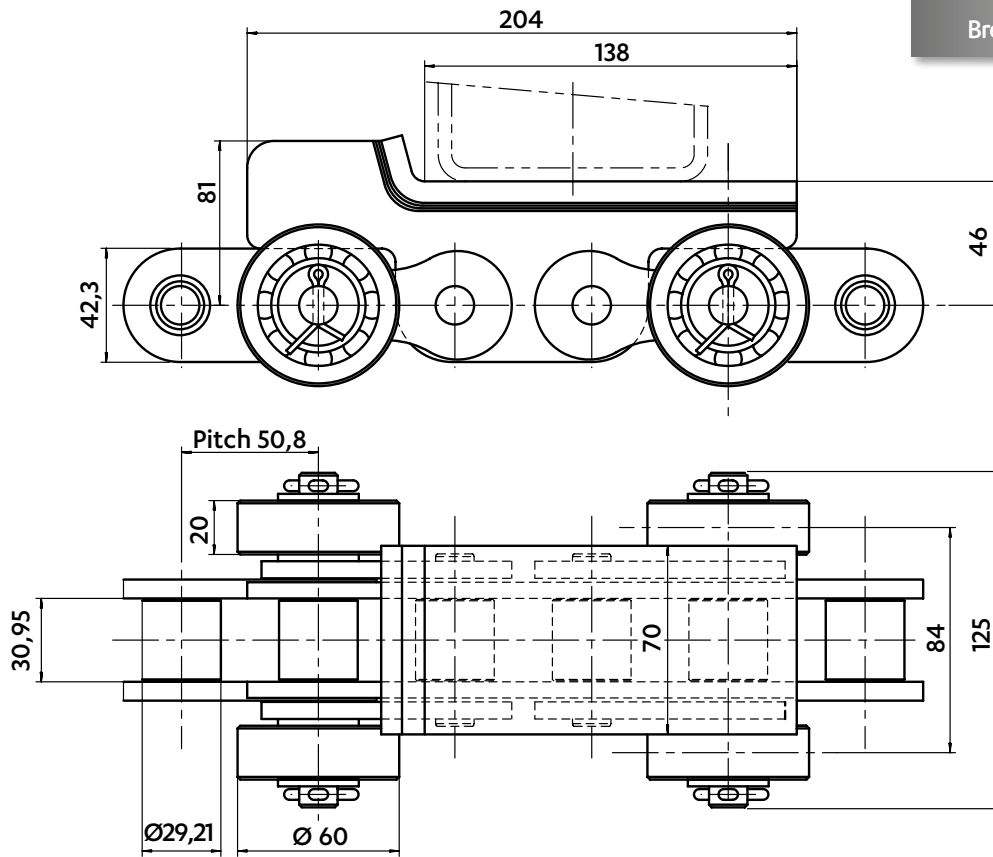




Dimensions in mm

**CONVEYOR CHAIN FOR SKID EJECTION**

**5281-54**  
Breaking load : 260 kN



**CONVEYOR CHAIN**

**5516-28**

