

CHAINS FOR ABATTOIRS

Dimensions in mm

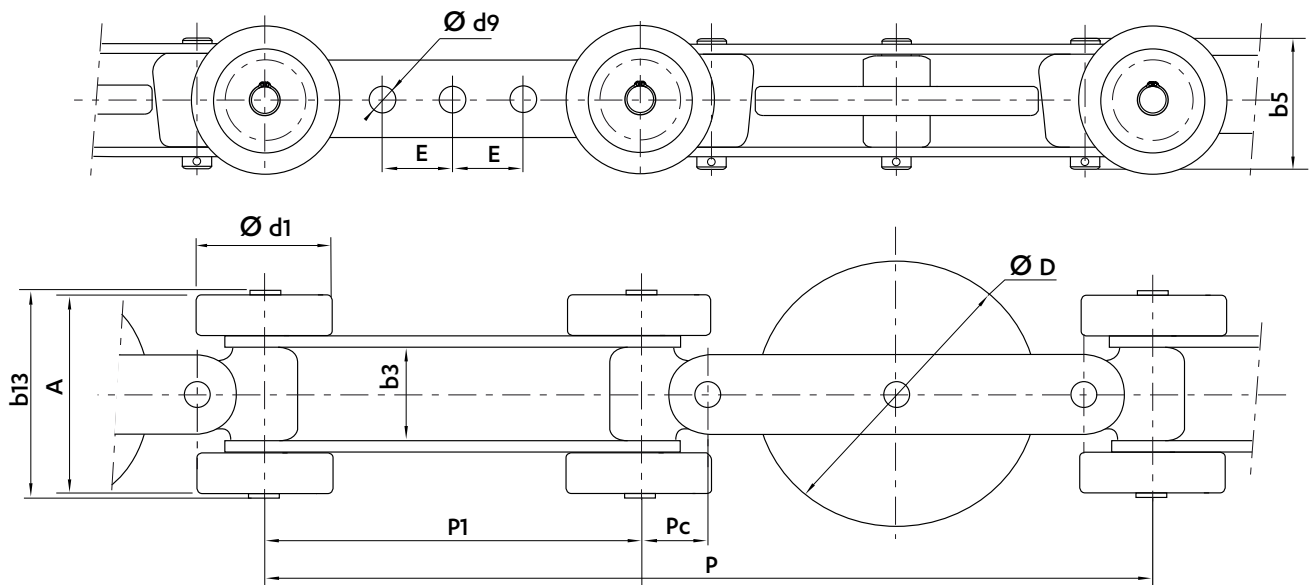
MULTIDIRECTIONAL CHAINS

2 TYPES: • MAG3
• MAG5

2 VERSIONS: • Zinc plated bichromated & lubricated
• DELTA® VERTE® : maintenance-free



- Universal joints in forged steel with oil reservoir (except for the DELTA® VERTE® version of MAG 3)
- Directional wheels fitted on a treated steel ring (standard version) or a composite ring (DELTA® VERTE® version)
- Case-hardened directional wheel pin (standard version) or DELTA® pin (DELTA® VERTE® version)
- Ball bearing wheels

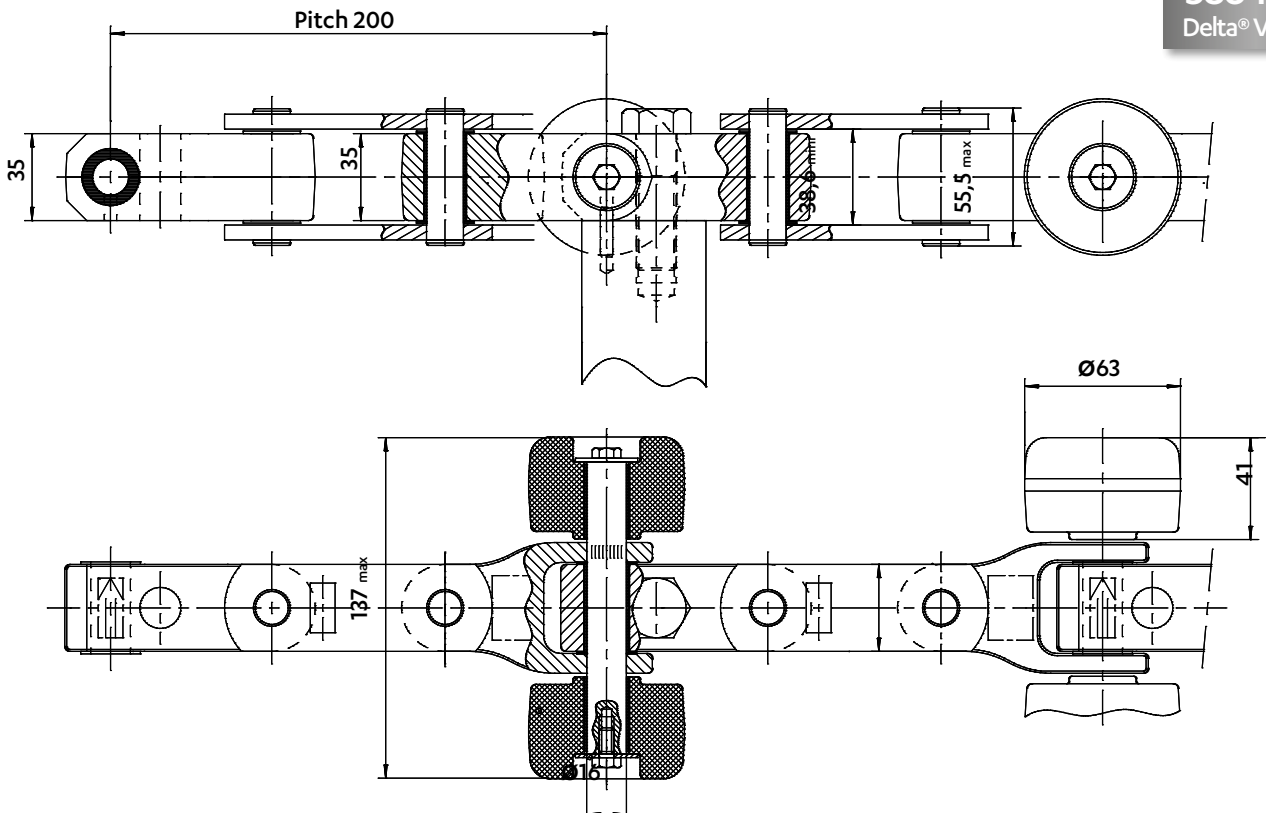


Chain ref	REFERENCES		PITCH			Width between plates b3	PLATES		PINS			WHEELS		Min. breaking load		
	Standard	DELTA® VERTE®	Composed pitch (Pc + P1 x 2) P	Universal joint Pc	Outer plates P1		Hole Ø d9	Holes center distance E	Width over the pins riveted on one side and cottered on the other side		Extended length b13	Width over ball wheels A	directional wheel Ø D	Ball bearing wheels Ø d1	Standard	DELTA® VERTE®
									Standard	DELTA® VERTE®						
MAG 3	5695-07	5695-06	283	21,5	120	31,5/33	9	22,5	46	48,5	69,5	67,5	90	47	35	
MAG 5	5681-01	-	355	27,5	150	39,2	12	30	58		86,5	83,5	110	52	80	

Dimensions in mm

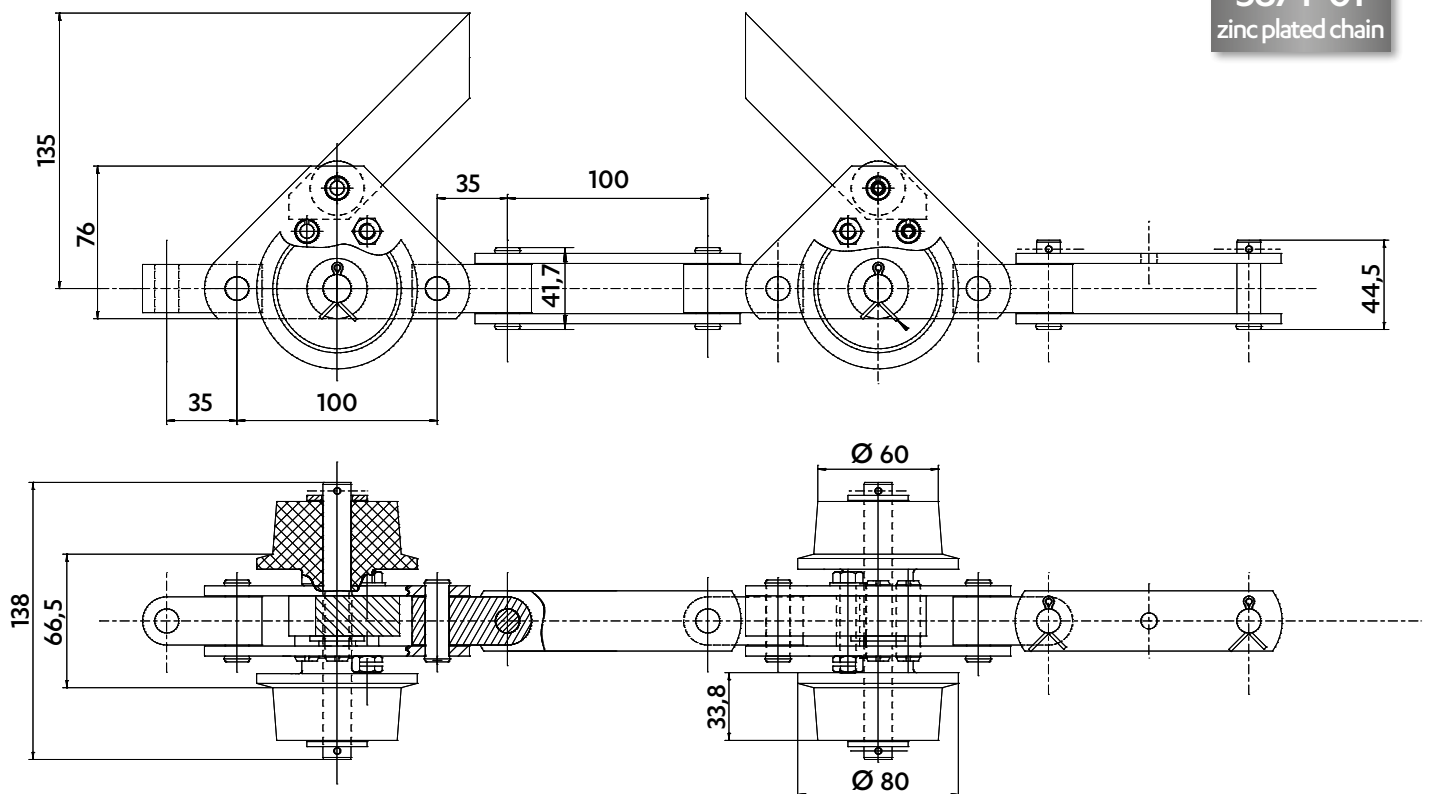
MULTIDIRECTIONAL CHAINS - DELTA VERTE® BI-PLANAR CHAIN

5864-01
Delta® Verte®



MULTIDIRECTIONAL CHAINS - BI-PLANAR CHAIN

5874-01
zinc plated chain

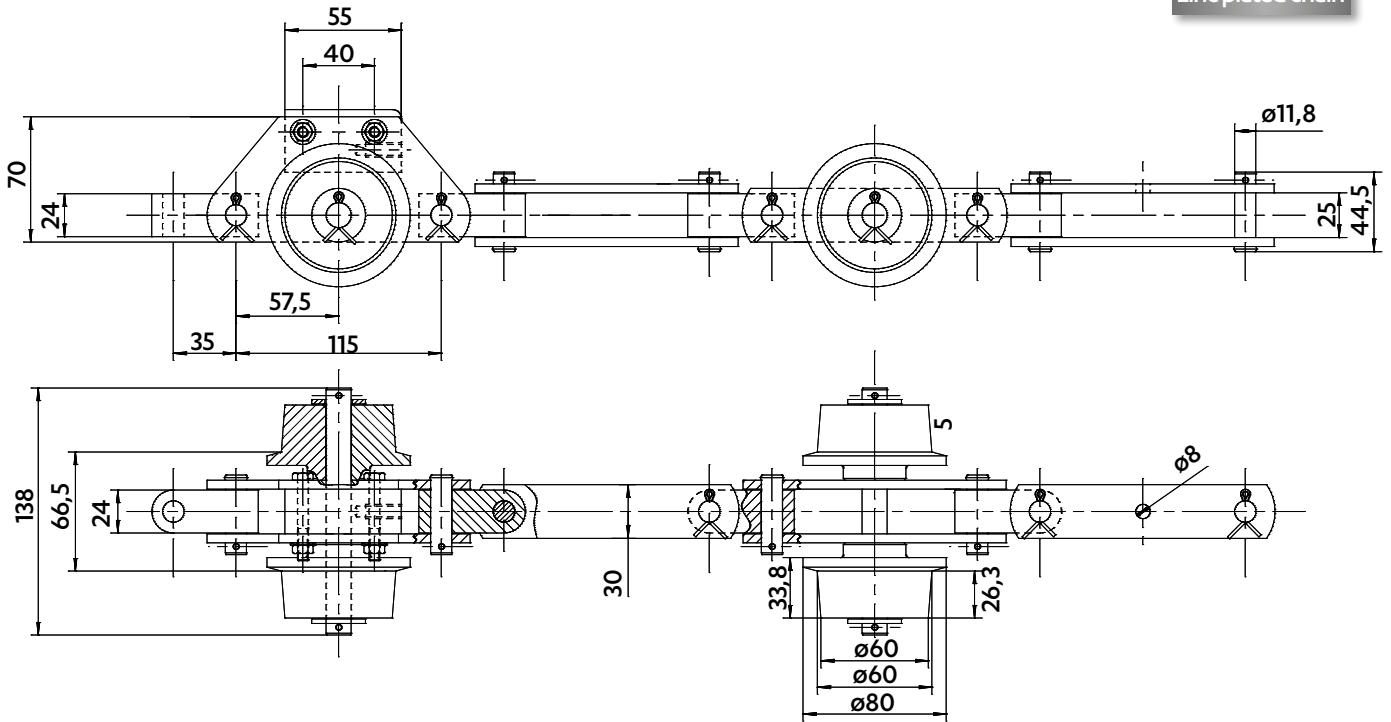


CHAINS FOR ABATTOIRS

Dimensions in mm

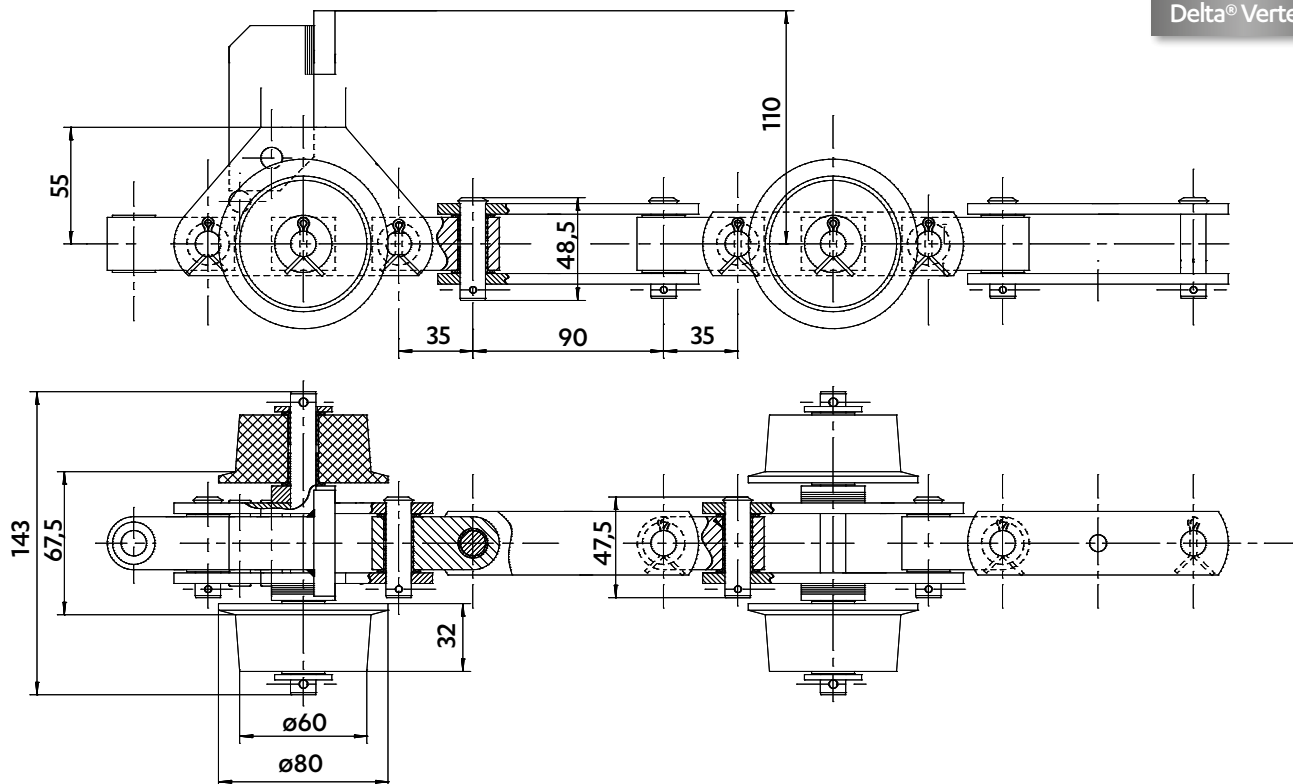
MULTIDIRECTIONAL CHAINS - BI-PLANAR CHAIN

5872-01
zinc plated chain



CHAIN OF CONVEYOR BEFORE BLEEDING

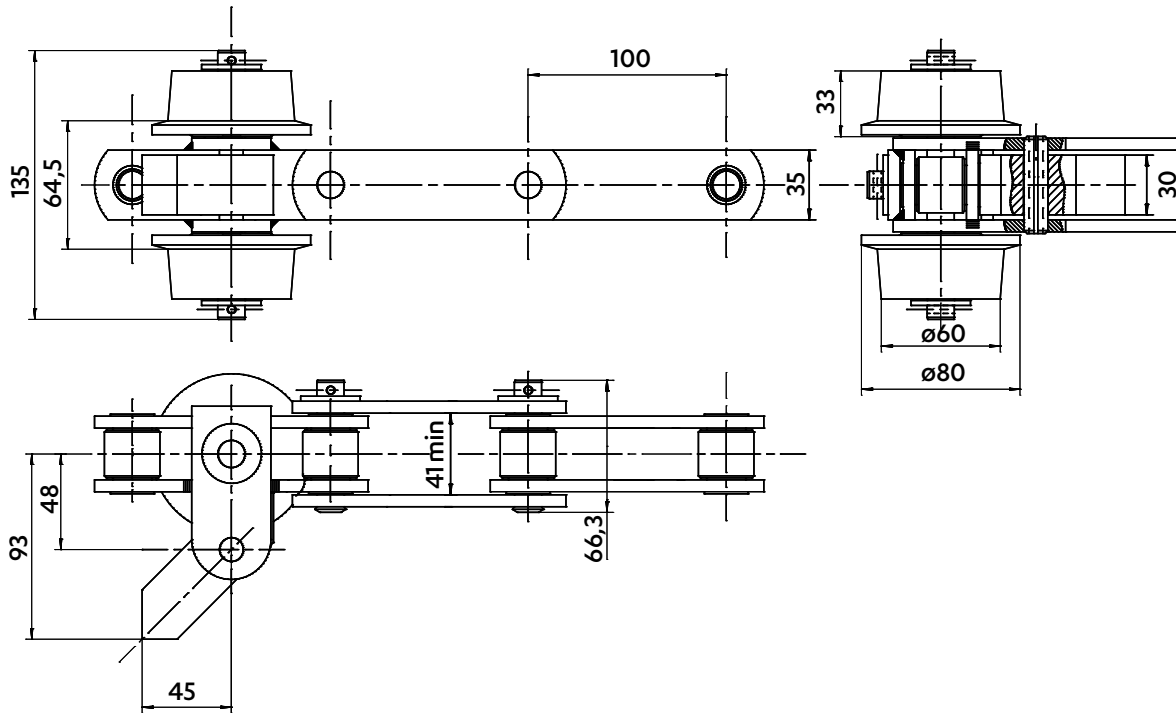
5860-01
Delta® Verte®



Dimensions in mm

CHAIN FOR BLEEDING

5377-63
Delta® Verte®



CHAINS FOR WHIPPING MACHINES

5515-23
zinc plated chain

