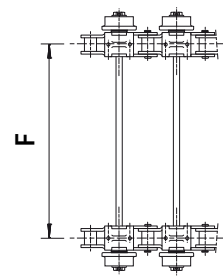
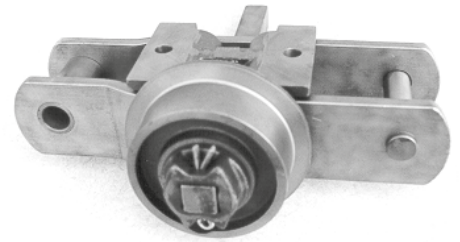
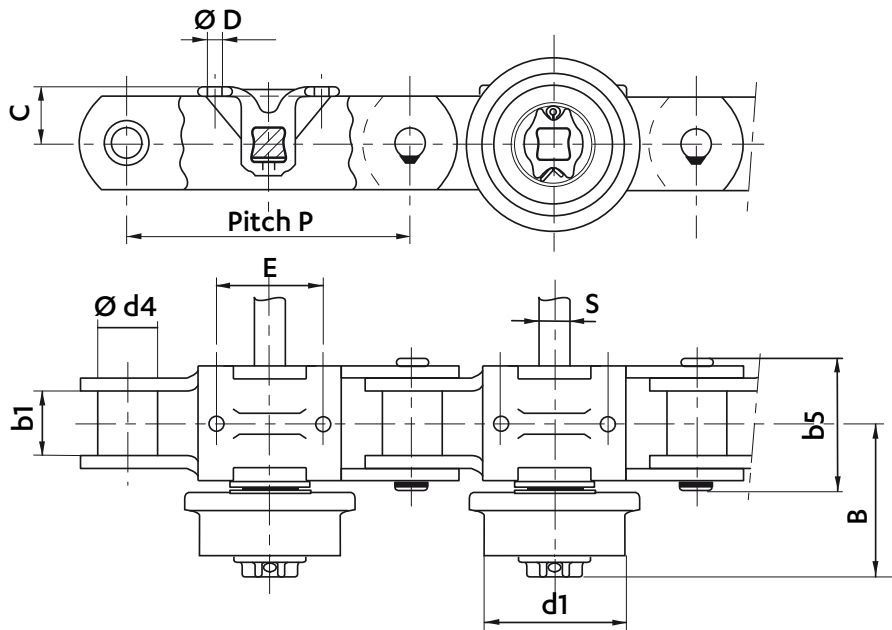


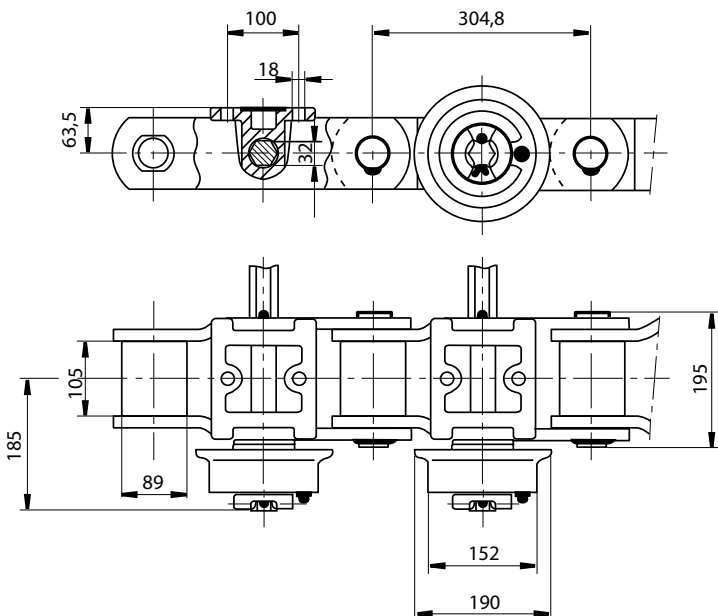
CHAINS FOR SUGAR INDUSTRY (CANE SUGAR)

Dimensions in mm

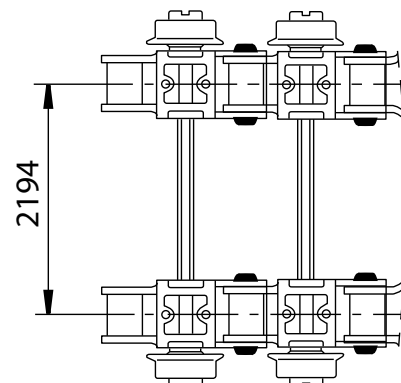
CANE CONVEYOR CHAINS



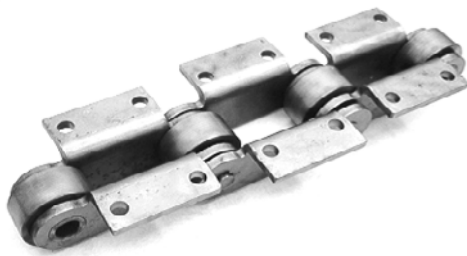
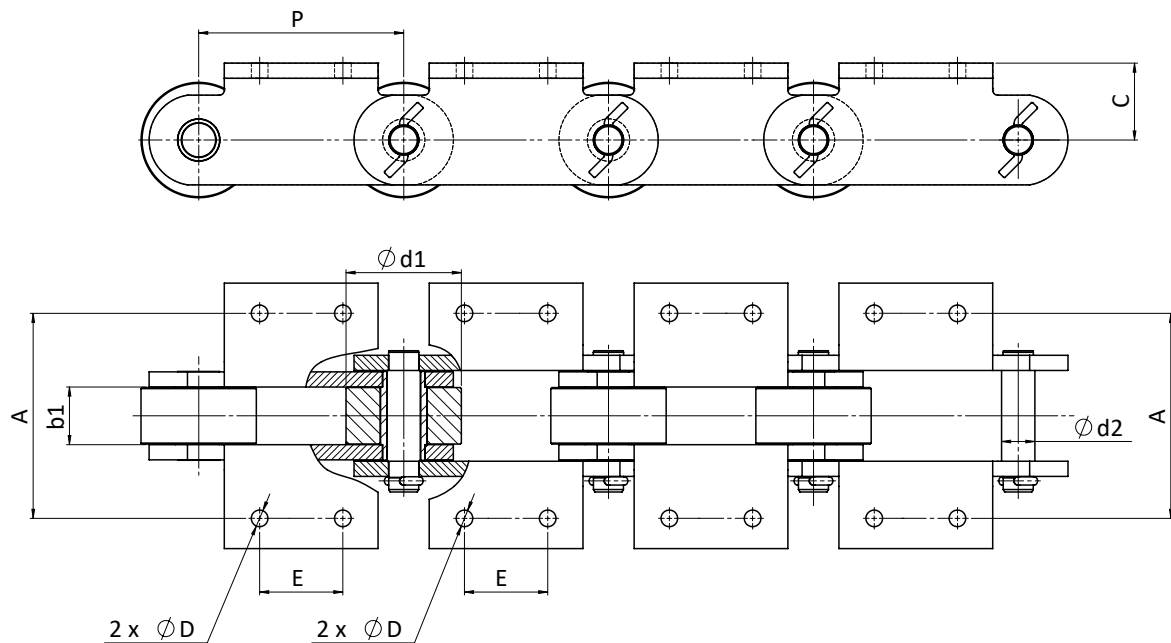
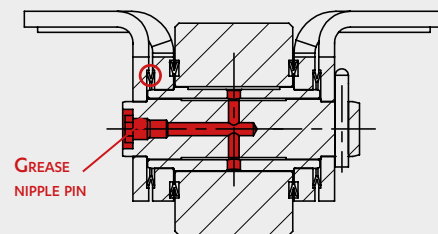
Chain ref	Pitch P	Width between inner plates b1	Bushes d4	Pins b5	Attachments			Wheels		Square rods S	Width B	Strand spacing F	Min. breaking load kN
					C	D	E	d1	d5				
5109-19	304,8	57,1	42,00	113	50,7	16	115	127,0	156	26	133,5	1780	314
5109-32		57,1	42,00	113	50,7			127,0	156	26	133,5	1980	314
5109-21		63,5	44,45	129	50,2			127,0	156	26	142,0	1510	451
5109-17		63,5	44,45	129	50,2			127,0	156	26	142,0	1580	451
5109-20		63,5	44,45	129	50,2			127,0	156	26	142,0	1680	451
5109-12		63,5	44,45	129	50,2			127,0	156	26	142,0	1780	451
5109-16		63,5	44,45	129	50,2			127,0	156	26	142,0	2080	451
5109-02		63,5	44,45	129	50,2			127,0	156	26	142,0	2280	451
5109-18		69,8	63,50	145	60,2			152,4	184	32	166,2	1680	627
5109-01		69,8	63,50	145	60,2			152,4	184	32	166,2	2240	627



**5371-01**  
Breaking load : 1014 kN



Dimensions in mm

**CANE CONVEYOR CHAINS**

**POSSIBLE OPTION:**
**V SEALS + AXIAL GREASING**


- Seals the articulation from outside
- Lubricates the articulation from inside
- Prevents maintenance
- Enhances the service life of the chain

Chain ref	Pitch P	Width between inner plates		Pins b5	Wheels d1	Attachments			seal and axial greasing option	Min. breaking load kN
		b1	b5			C	D	E		
5361-76	152,4	38,1	98	70	42,0	14,5	76,2	111		310
5361-60		38,1	98	76	42,0	14,5	76,2	111		310
5617-06		38,1	98	70	45,0	14,5	60,0	130		315
5361-31		43,1	100	76	42,0	14,0	60,0	125		315
5361-38		37,2	101	76	44,5	14,5	76,2	111		471
5361-32		56,1	113	85	42,0	14,0	60,0	150		500
5361-38		38,5	22	76	44,5	14,5	76,2	111		471
5977-66		46	23	81	45	14,3	76,2	110	x	168
5977-57		38,1	23,8	80	44,45	14,3	76,2	111,24		635
5977-58		38,1	23,8	80	44,45	14,3	76,2	111,24	x	635
5532-13	203,2	57,15	33	114,3	76,2	16,5	82,5	203,2		1226
5532-03		57,15	33	114,3	76,2	16,5	82,5	203,2	x	1226

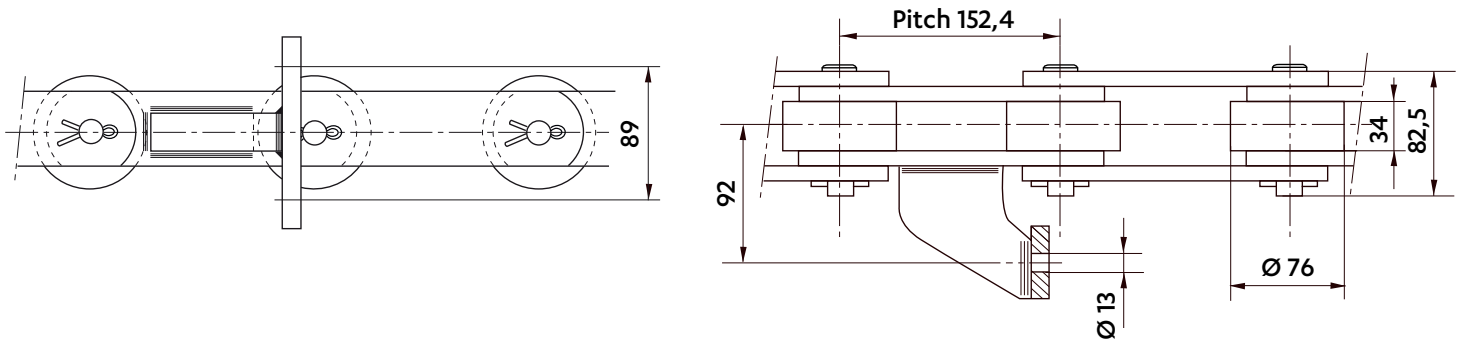
CHAINS FOR SUGAR INDUSTRY (CANE SUGAR)

Dimensions in mm

INTERMEDIATE CONVEYOR CHAINS

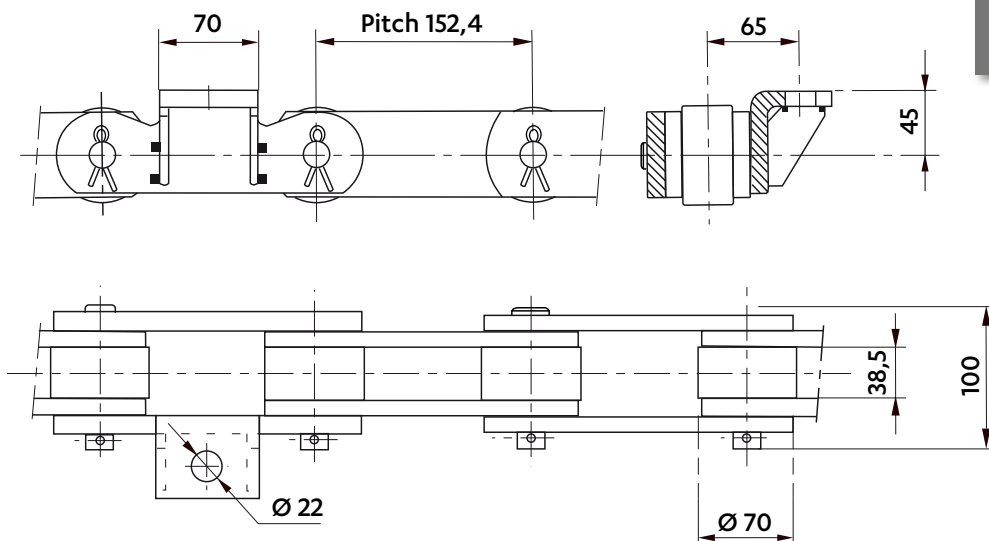
5361-29

Breaking load : 220 kN



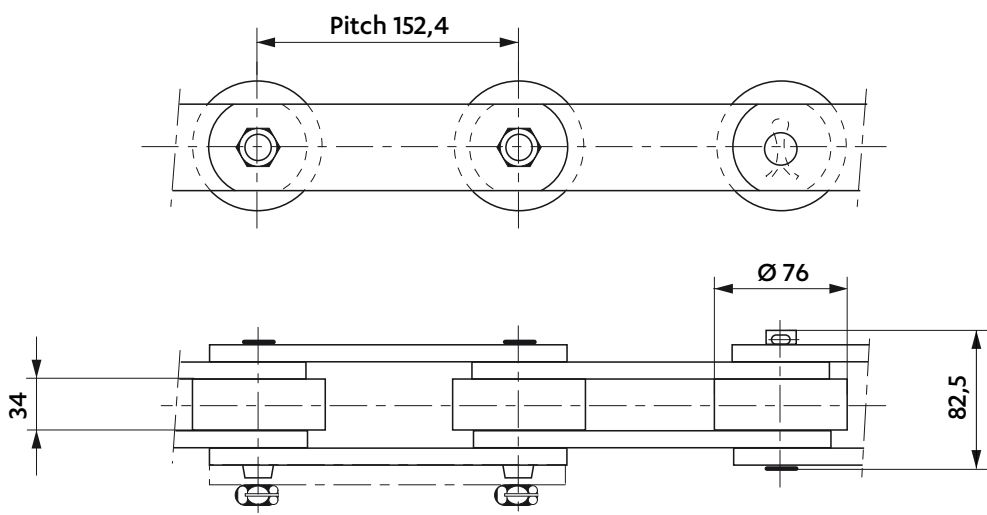
5361-59

Breaking load : 310 kN



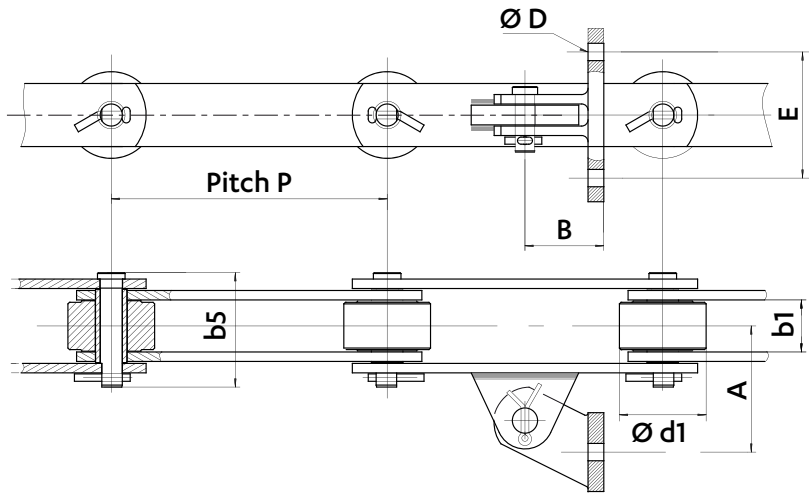
5361-22

Breaking load : 220 kN

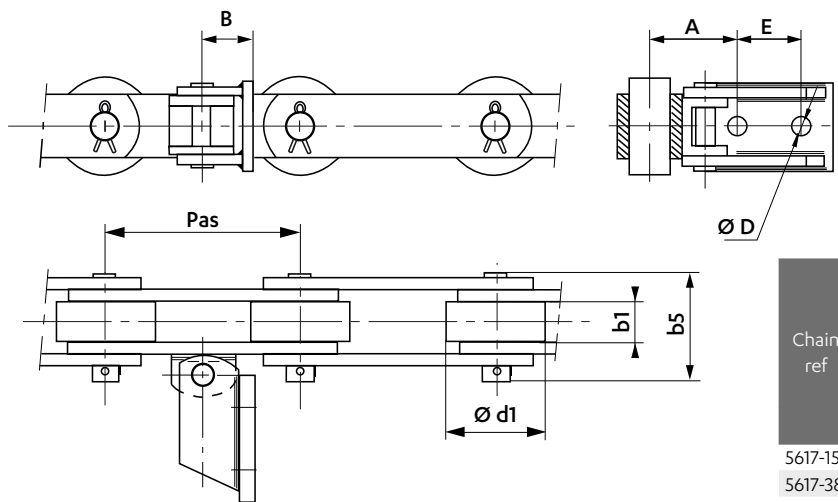


Dimensions in mm

## BAGASSE CARRIER CHAINS

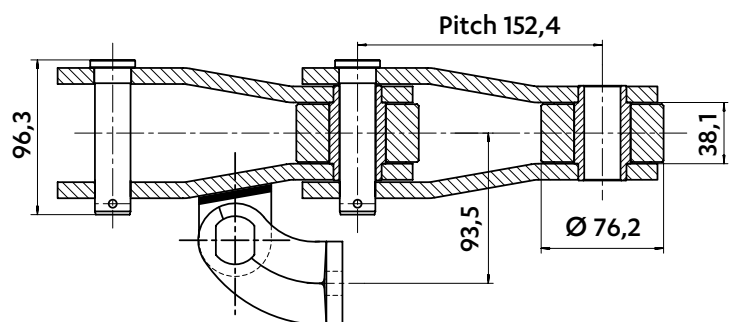
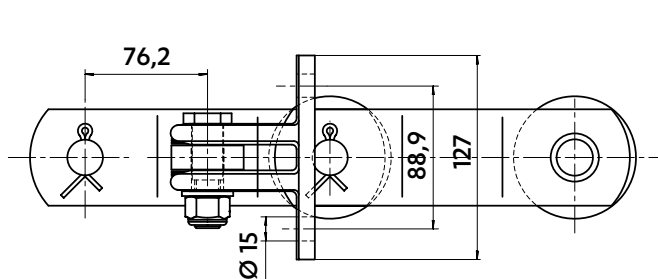


Chain ref	Pitch P	Width between inner plates b1	Pins b5	Wheels d1	Attachments			
					D	A	B	E
5617-17	152,4	33,6	85	76	13	92	68	89
5617-13	152,4	38,1	99	76	13	92	68	89
5783-05	350	66,0	145	110	22	22	100	160



Chain ref	Pitch P	Width between inner plates b1	Pins b5	Wheels d1	Attachments			
					D	A	B	E
5617-15	152,4	38,1	98,5	76	13	98,5	67	150
5617-38		34,0	82,5		14	68,0	40	50

5617-32



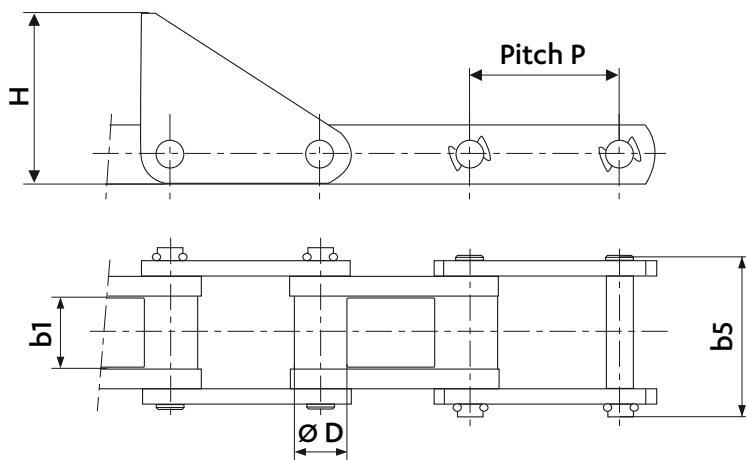
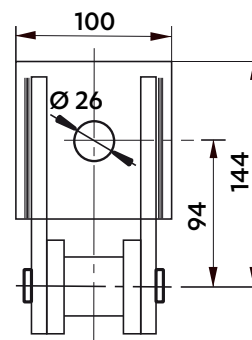
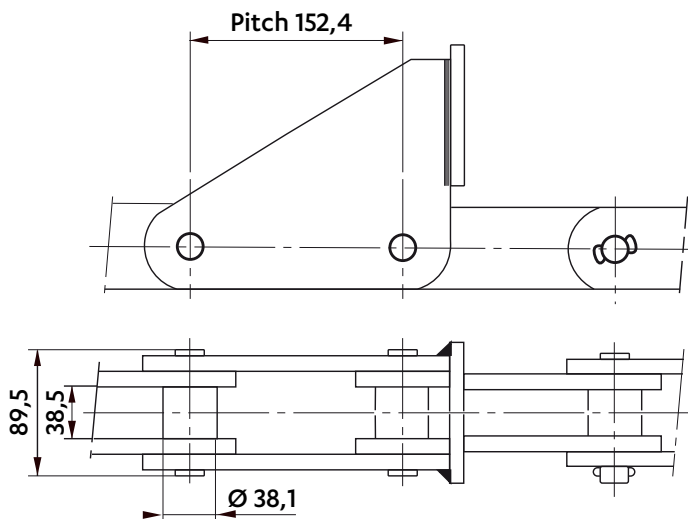
CHAINS FOR SUGAR INDUSTRY (CANE SUGAR)

Dimensions in mm

CONVEYOR CHAINS WITH PUSHER PLATES

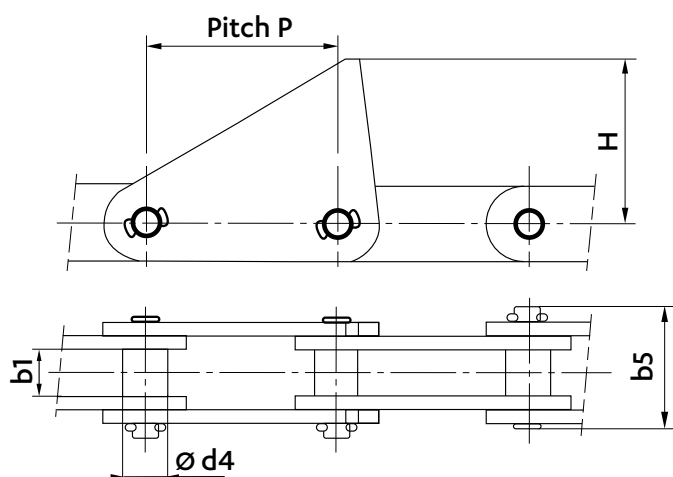
5361-61

Breaking load : 310 kN



Moulded inner link

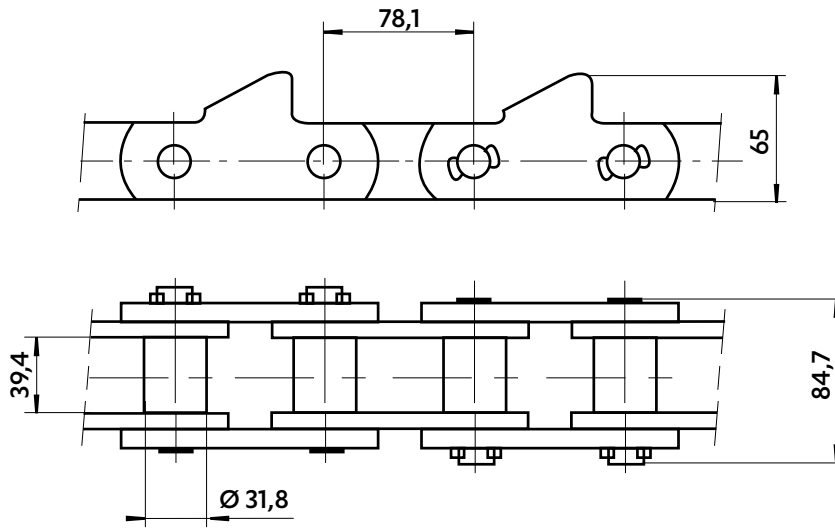
Chain ref	Pitch	Width between inner plates	Pins	Pusher plates height	
	P	b1	b5	H	D
5390-06	101,60	47	109,5	115	36
5873-01	153,67	73	155,0	152	44



Chain ref	Pitch	Width between inner plates	Bushes	Pins	Pusher plates height	Min. breaking load
	P	b1	d4	b5	H	kN
5315-02	135,0	39,0	28	84,7	150	175
5361-14	152,4	38,1	35	96,6	160	310

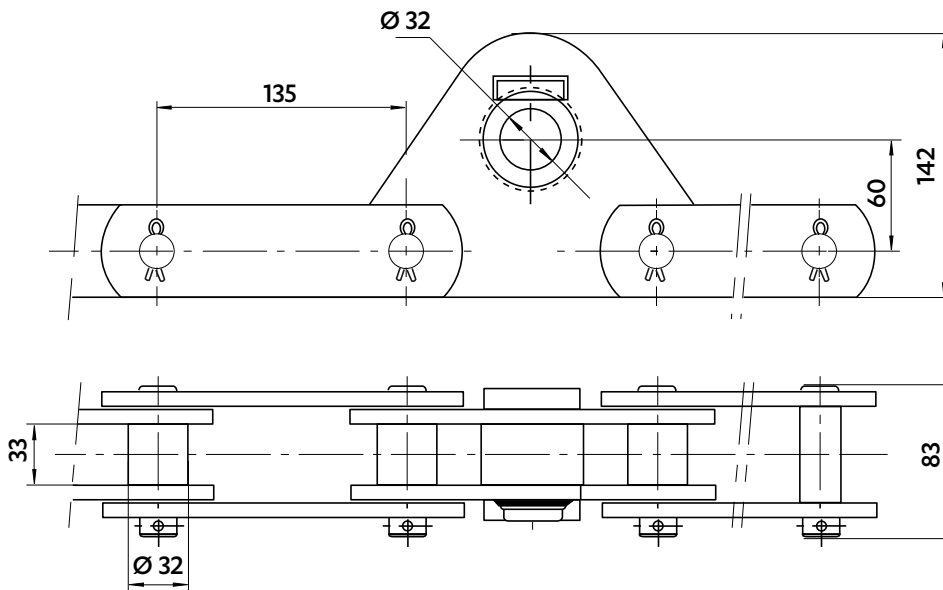
Dimensions in mm

## BOILER CHAIN



**5576-01**  
Breaking load : 100 kN

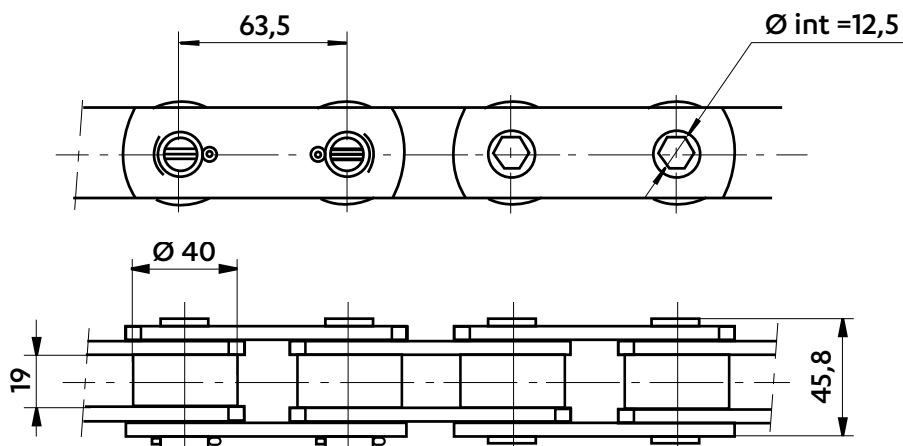
## CHAIN FOR WEEDING



**5453-03 / 5453-04**  
Breaking load : 145 kN



## CHAIN FOR CANE HARVESTER AND CONTINUOUS LOADER



**5419-11**  
Breaking load : 49 kN  
Hollow pin chain



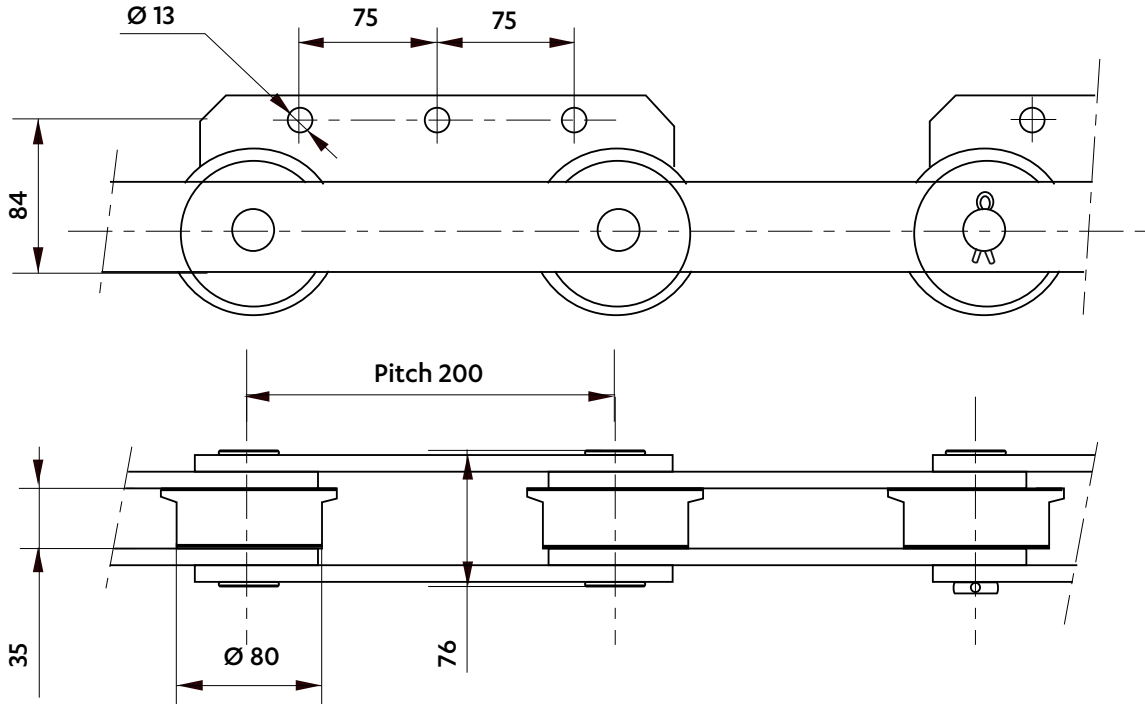
CHAINS FOR SUGAR INDUSTRY (BEET SUGAR)

Dimensions in mm

CHAINS FOR BEET CLEANING - ROCK CATCHER

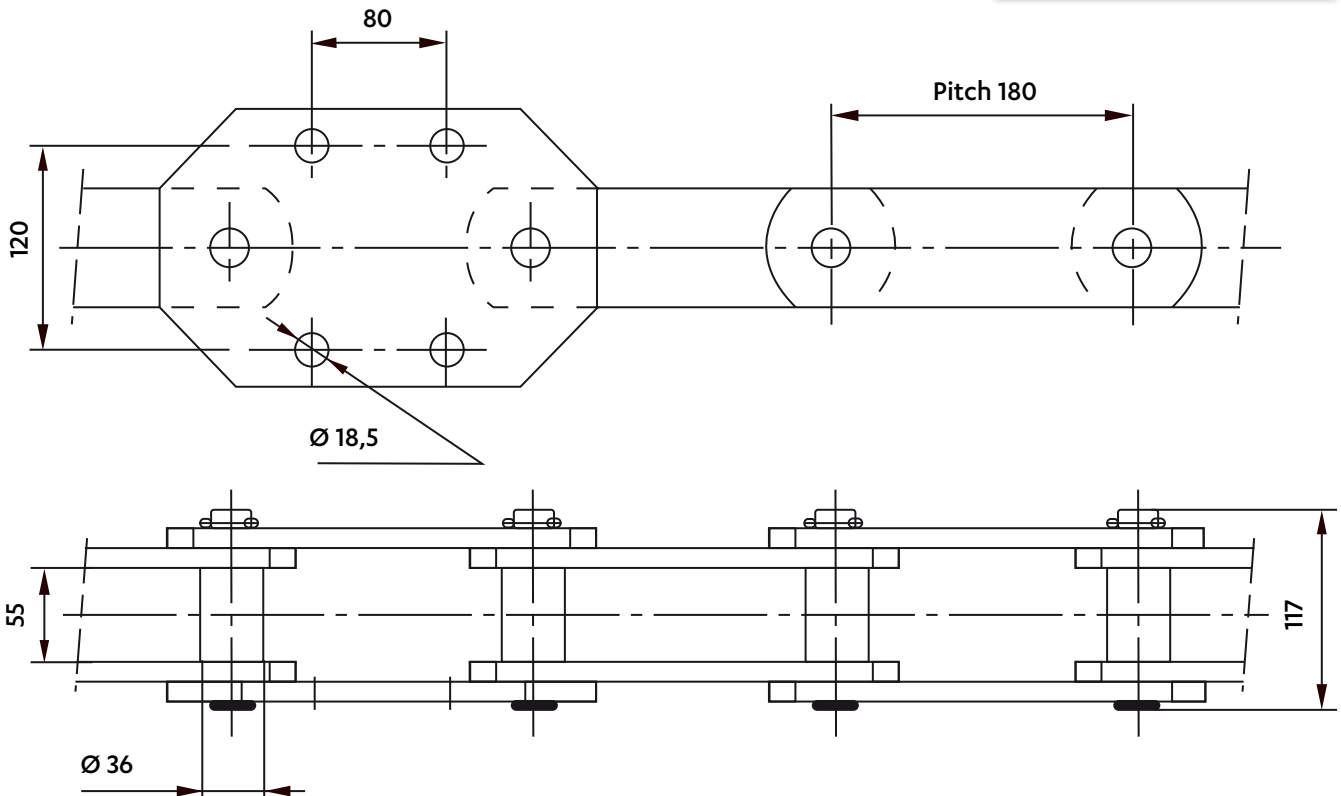
5308-40

Breaking load : 180 kN



5334-03

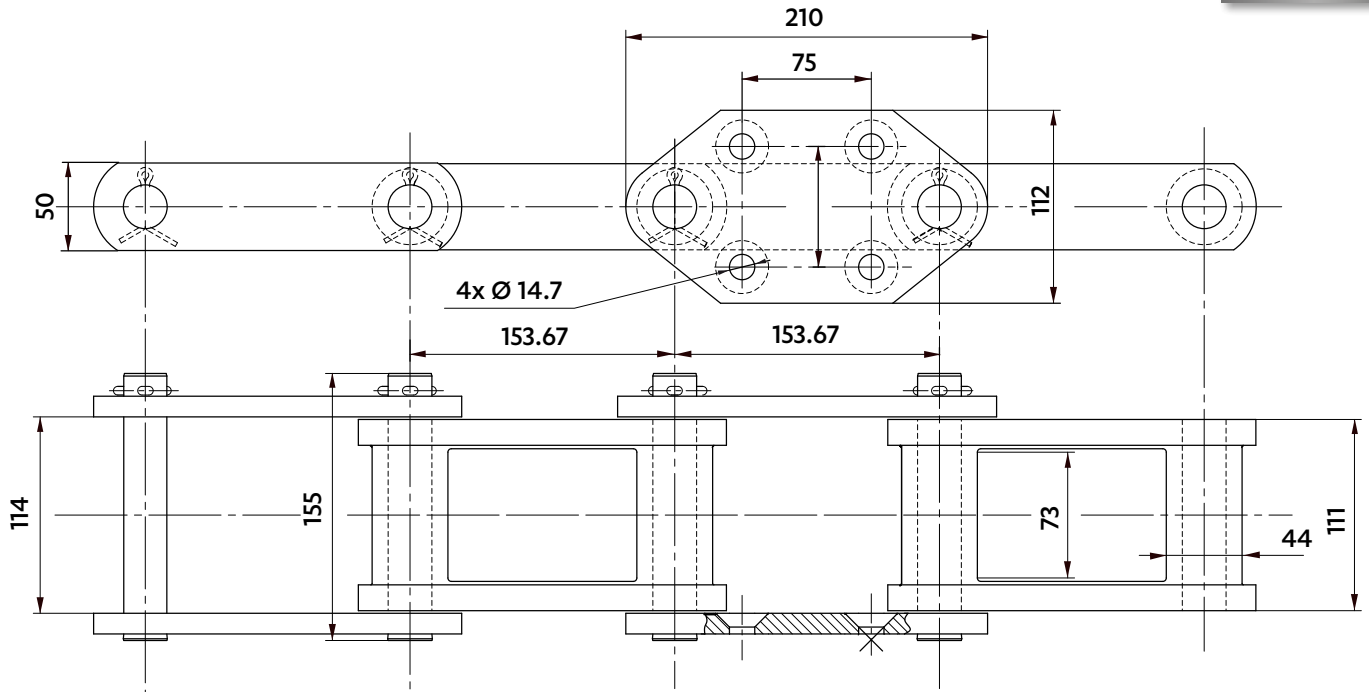
Breaking load : 320 kN



Dimensions in mm

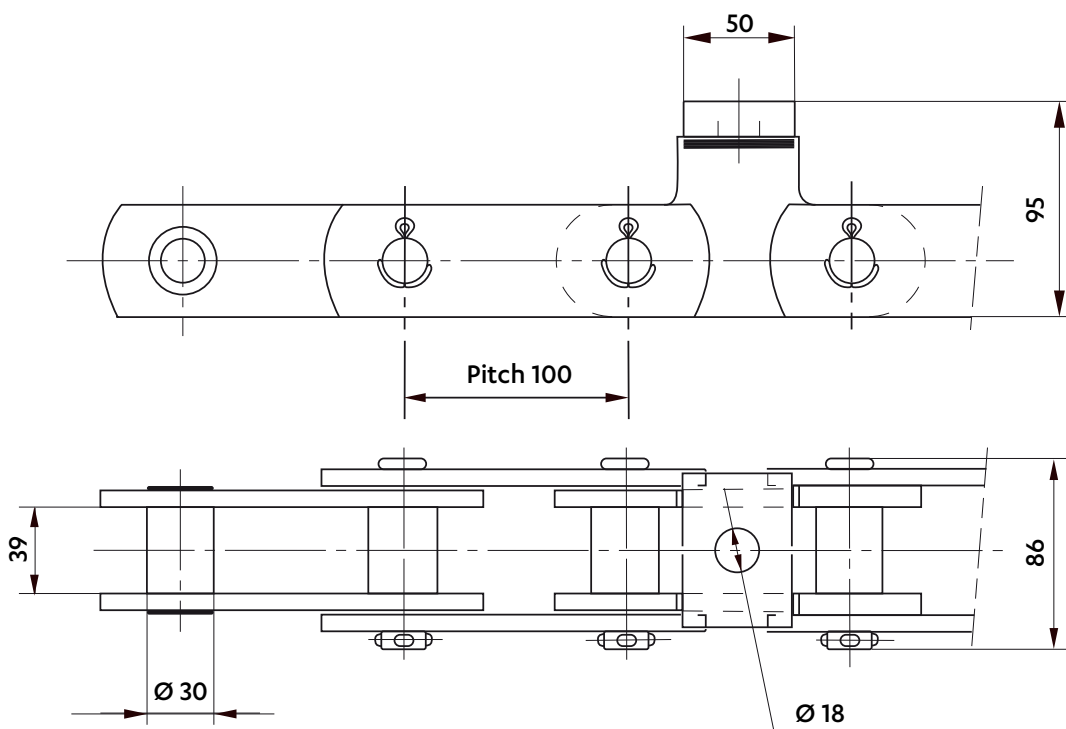
**CHAINS FOR BEET CLEANING - ROCK CATCHER**

5873-02



**CHAINS FOR EVAPORATOR**

5377-50  
Breaking load : 145 kN



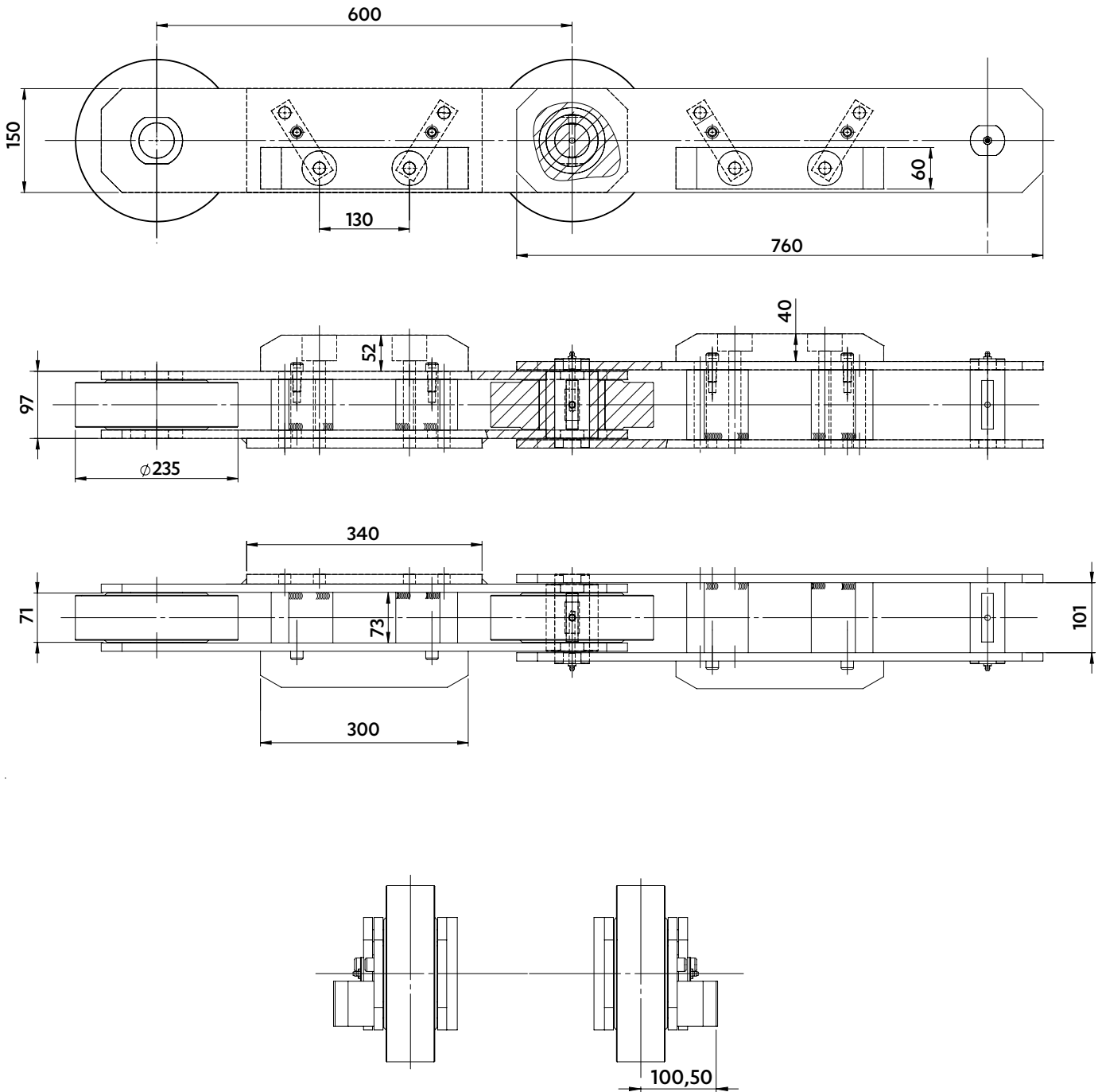


CHAINS FOR SUGAR INDUSTRY (BEET SUGAR)

Dimensions in mm

CHAIN FOR BEET CLEANING

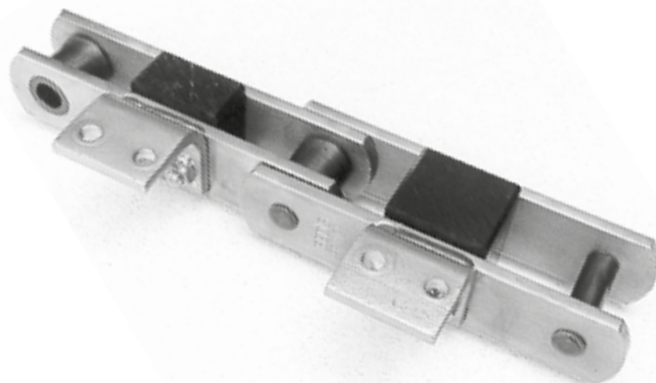
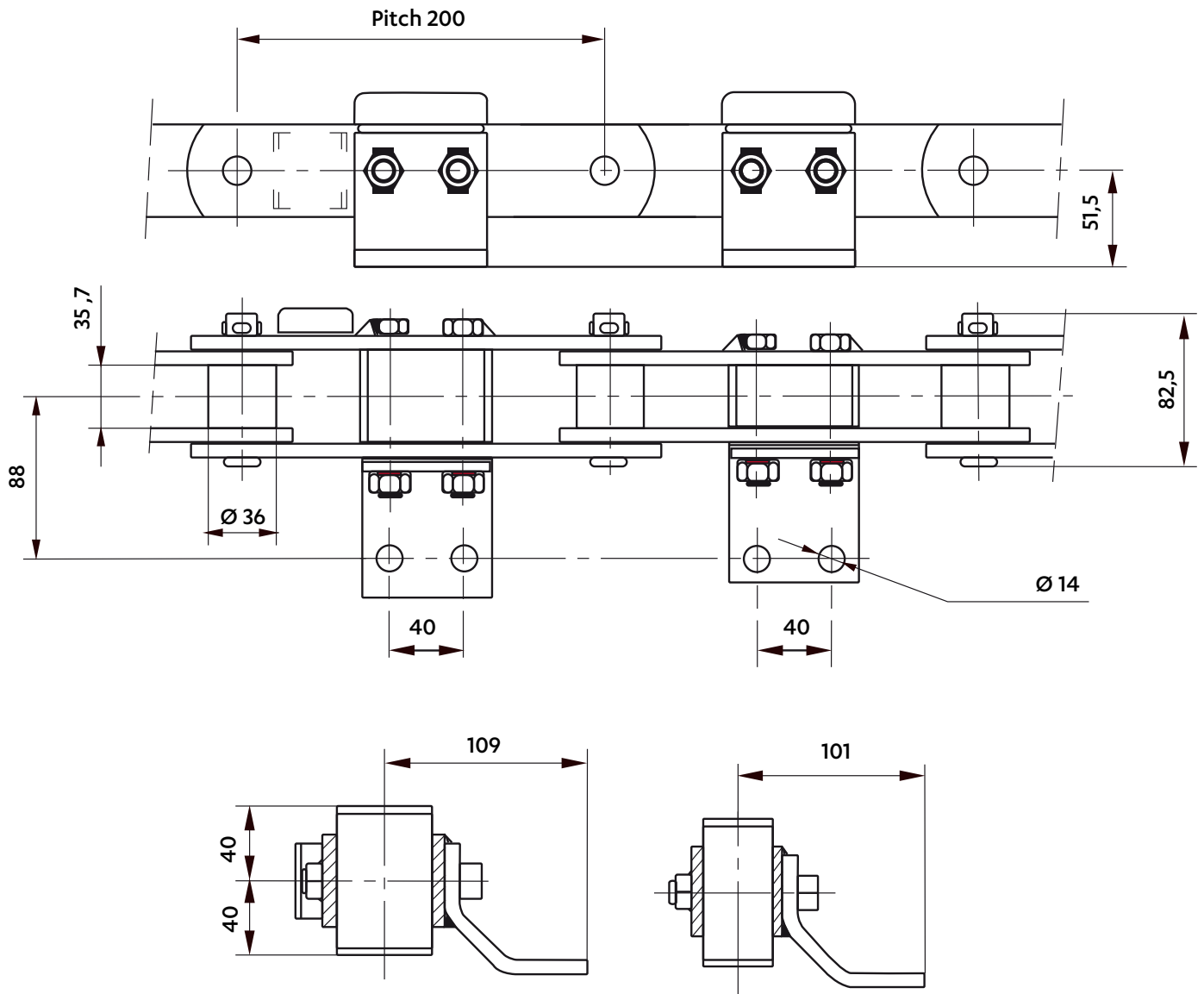
5747-31



Dimensions in mm

**CHAIN FOR BEET CLEANING : HYDRO TRASH CATCHER**

**5308-13**  
 Breaking load : 160 kN  
 Top plates in plastic

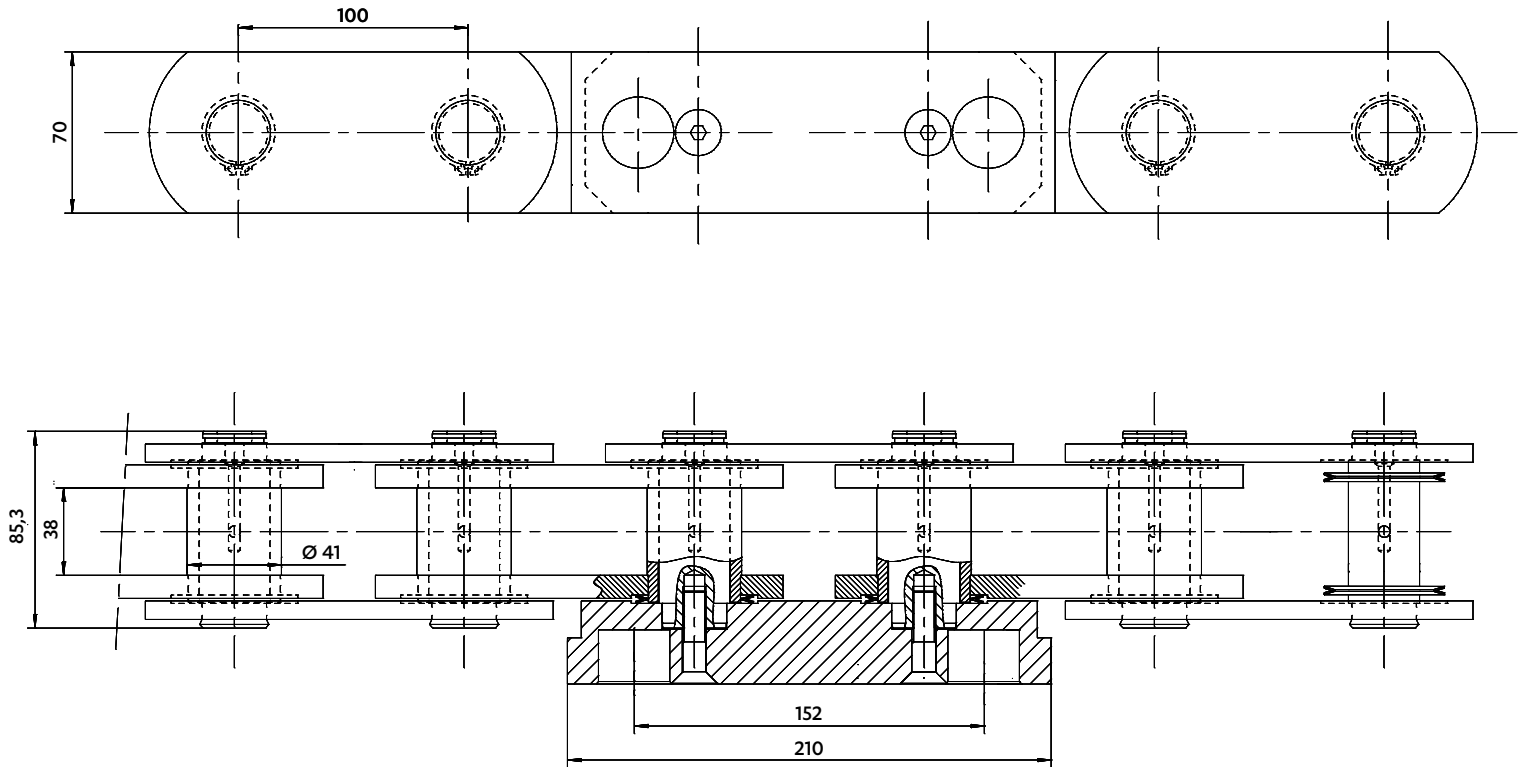



CHAINS FOR SUGAR INDUSTRY (BEET SUGAR)

Dimensions in mm

CHAIN FOR EVAPORATOR

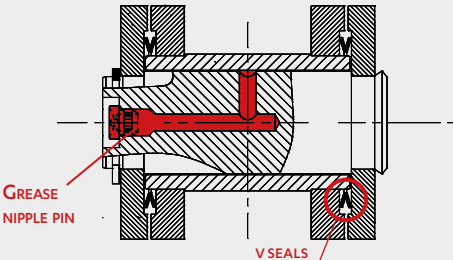
5890-80





SEDIS solution

**V SEALS +  
AXIAL GREASING**

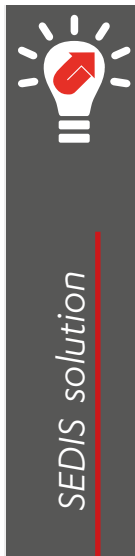
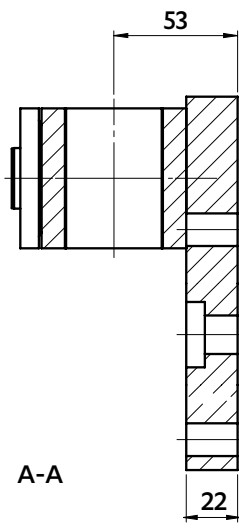
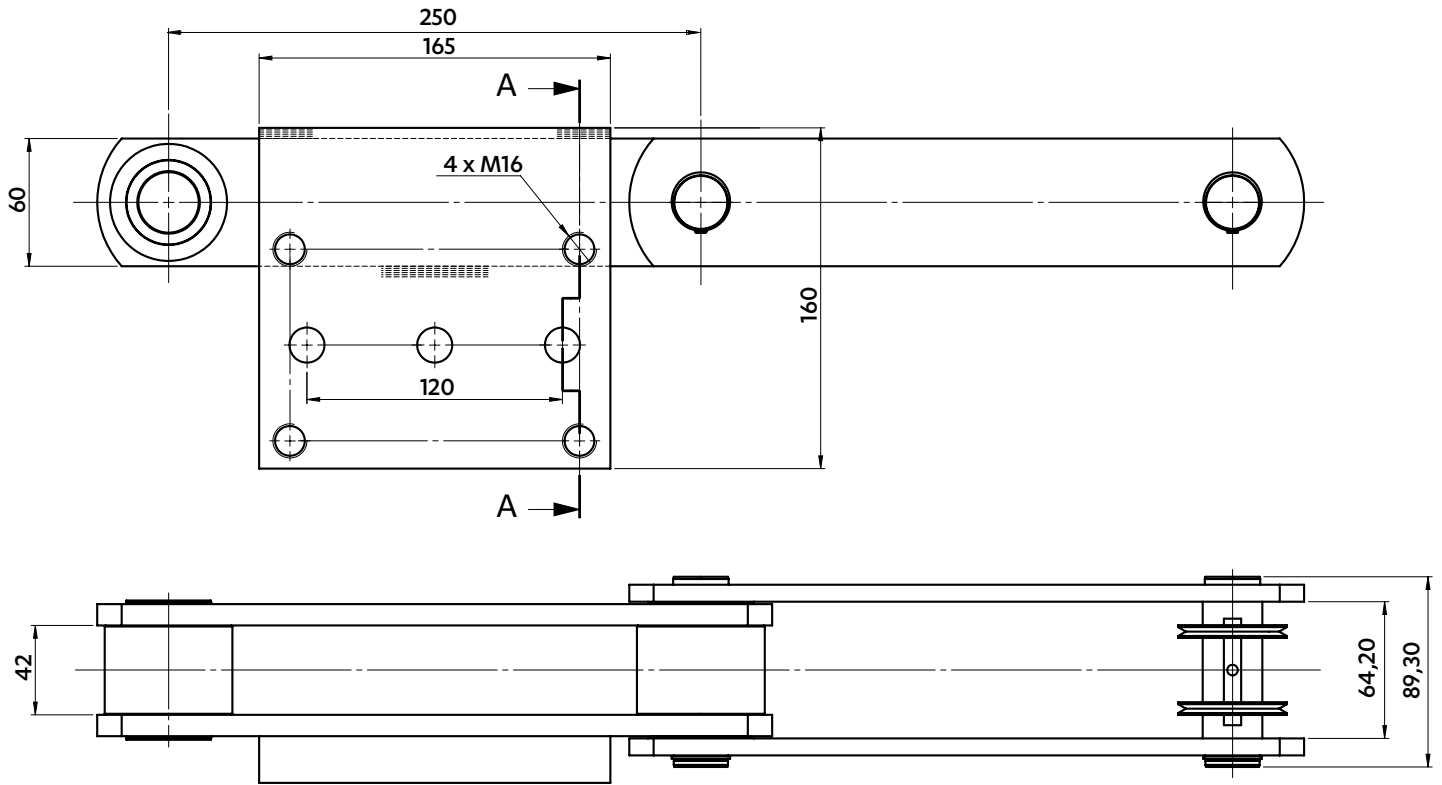


- Seals the articulation from outside
- Lubricates the articulation from inside
- Prevents maintenance
- Enhances the service life of the chain

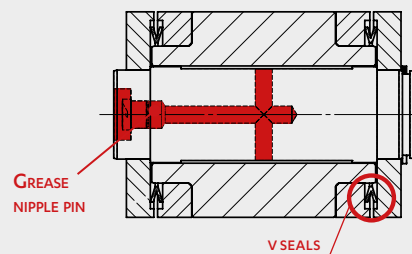
Dimensions in mm

**CHAIN FOR BEET CLEANING : TRASH CATCHER**

5972-66



**DELTA® ARTICULATION  
+ V SEALS + AXIAL GREASING**



- Improved wear resistance
- Seals the articulation from outside
- Lubricates the articulation from inside
- Prevents maintenance
- Enhances the service life of the chain