

BRICK & TILE Industry

Chains for the brick and tile industry

In some applications as in bricks and tiles industries where the environment is often extremely abrasive (dust, residuals...) SEDIS has the solution against wear due to abrasion :

DELTA® HR RANGE & THE DELTA® TREATMENT

For extreme operating conditions



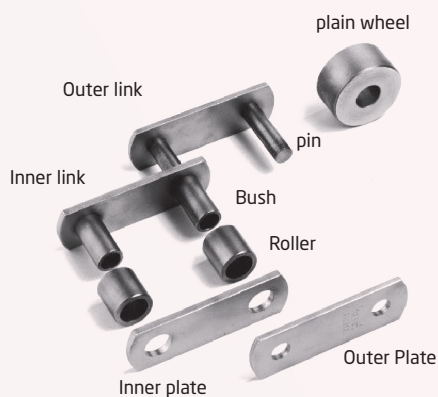
The Delta treatment is especially suitable for:

- > Abrasive environment
- > High speeds
- > Irregular or non-existent lubrication

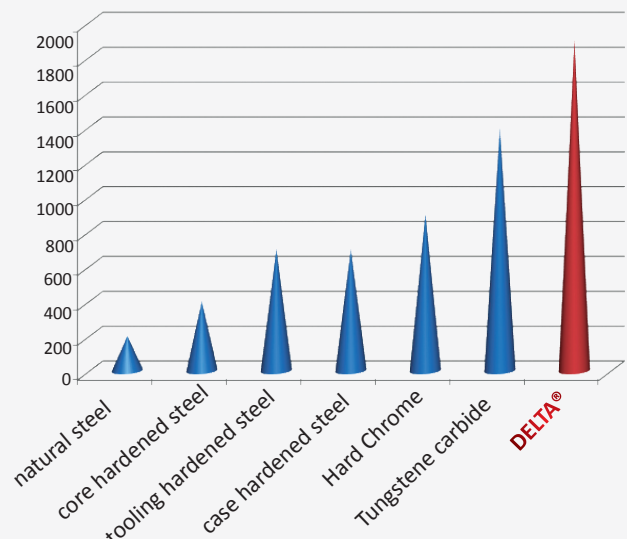
What is the Delta® treatment ?

A thermochemical treatment invented and implemented by **SEDIS**, which is obtained after carburising, provides the chain's links with remarkable ability to withstand **abrasion and oxydation** of articulations. This ability is guaranteed by a surface hardness (**1800 Vickers**) that is almost 3 times higher than that obtained by using traditional carbisation (700 Vickers).

Besides SEDIS is the only manufacturer to operate this type of treatment on large diameter pins.



Comparison of hardness (in HV)



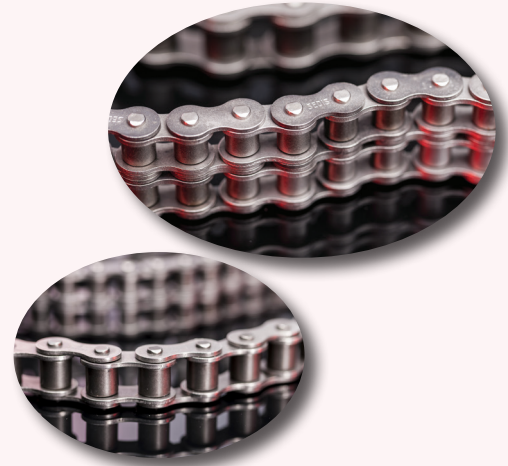
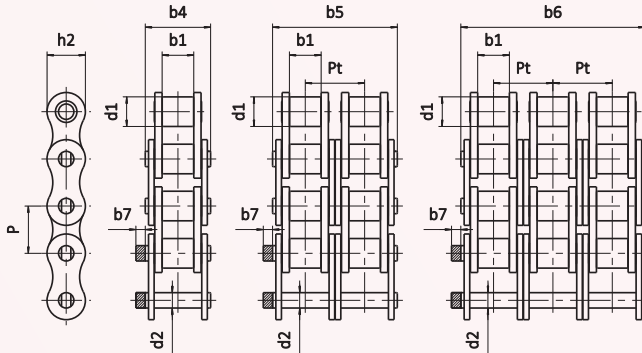
Where to find the Delta® treatment in the SEDIS range?

- > Transmission chains
- > Standard conveyor chains
- > Special conveyor chains

Chains for the brick and tile industry

BS TRANSMISSION CHAINS

CHAINS COMPLYING WITH STANDARD ISO 606

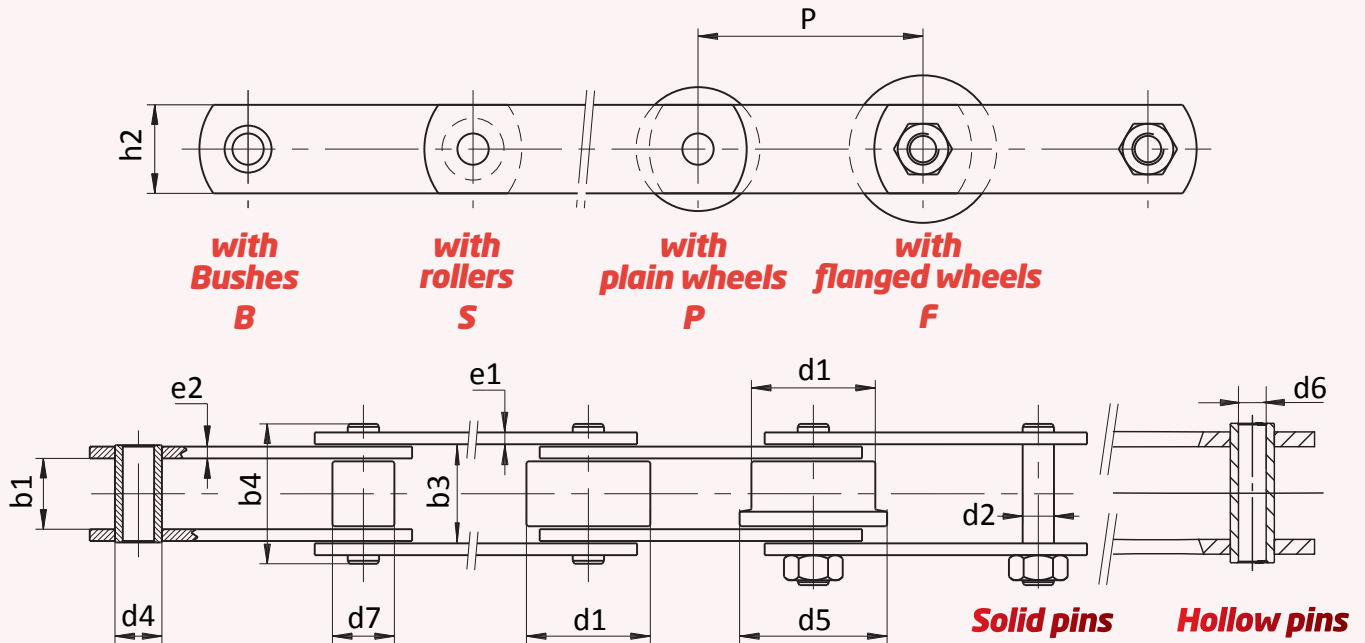


References			Pitch	RANGES		Principal dimensions (mm)							Breaking load					Mass per metre
				ALPHA Premium	DELTA [®] HR	d1	b1	b4 b5 b6	d2	h2	Pt	b7	ISO 606	ALPHA		DELTA [®] HR		
ISO 606	SEDIS	P			max.	min.	max.	max.	max.		min.	min. kN	min. kN	moy. kN	min. kN	moy. kN	kg	
SIMPLEX	05B-1	1N	8	x		5,00	3,00	8,60	2,31	7,11	.	1,2	5,0	5,0	6,0	.	.	0,18
	06B-1	3N	9,525	x	x	6,35	5,77	13,50	3,27	8,23	.	2,1	8,9	9,0	10,3	9,0	10,3	0,40
	081	4L	12,7	x	x	7,75	3,30	9,80	3,66	10,05	.	1,5	8,0	8,0	9,8	8,0	9,8	0,28
	08B-1	7N	12,7	x	x	8,51	7,75	16,60	4,45	11,80	.	1,5	17,8	18,2	20,4	18,2	20,4	0,68
	10B-1	11N	15,875	x	x	10,16	9,65	19,00	5,08	13,70	.	1,5	22,2	23,0	27,2	23,0	27,2	0,86
	12B-1	13N	19,05	x	x	12,07	11,68	22,30	5,72	16,20	.	1,5	28,9	30,5	34,8	30,5	34,8	1,18
	16B-1	15T	25,4	x	x	15,88	17,02	35,10	8,28	20,80	.	3,0	60,0	66,0	76,3	75,0	87,0	2,66
	20B-1	17T	31,75	x	x	19,05	19,56	40,50	10,19	25,40	.	6,1	95,0	105,0	114,0	110,0	119,0	3,72
	24B-1	18T	38,1	x	x	25,40	25,40	53,10	14,63	32,30	.	6,6	160,0	180,0	198,0	180,0	198,0	7,05
	28B-1	20T	44,45	x	x	27,94	30,95	65,10	15,90	37,00	.	7,4	200,0	235,0	252,0	235,0	251,5	8,96
32B-1	22T	50,8	x	x	29,21	30,99	63,60	17,81	42,30	.	7,9	250,0	270,0	288,0	300,0	321,0	10,00	
40B-1	23T	63,5	x	x	39,37	38,10	79,00	22,89	52,80	.	12,0	355,0	365,0	385,0	365,0	383,3	16,20	
48B-1	24T	76,2	x	x	48,26	47,70	98,60	29,22	64,20	.	12,0	560,0	600,0	630,0	600,0	630,0	24,93	
DUPLIX	06B-2	203N	9,525	x	x	6,35	5,77	23,80	3,27	8,23	10,24	2,1	16,9	17,6	20,6	18,0	21,1	0,74
	08B-2	207N	12,7	x	x	8,51	7,75	30,60	4,45	11,80	13,92	1,5	31,1	36,4	40,8	36,4	40,8	1,33
	10B-2	211N	15,875	x	x	10,16	9,65	35,75	5,08	13,70	16,59	1,5	44,5	46,0	54,4	46,0	54,4	1,70
	12B-2	213N	19,05	x	x	12,07	11,68	41,80	5,72	16,20	19,46	1,5	57,8	61,0	69,6	61,0	69,5	2,35
	16B-2	215T	25,4	x	x	15,88	17,02	68,00	8,28	20,80	31,88	3,0	106,0	132,0	152,6	150,0	174,0	5,28
	20B-2	217T	31,75	x	x	19,05	19,56	77,00	10,19	25,40	36,45	6,1	170,0	210,0	228,0	220,0	239,8	7,36
	24B-2	218T	38,1	x	x	25,40	25,40	101,80	14,63	32,30	48,36	6,6	280,0	360,0	396,0	360,0	396,0	13,85
	28B-2	220T	44,45	x	x	27,94	30,95	124,70	15,90	37,00	59,56	7,4	360,0	470,0	504,0	470,0	502,9	18,80
	32B-2	222T	50,8	x	x	29,21	30,99	122,80	17,81	42,30	58,55	7,9	450,0	540,0	576,0	600,0	642,0	19,90
	40B-2	223T	63,5	x	x	39,37	38,10	152,00	22,89	52,80	72,29	12,0	630,0	730,0	770,0	730,0	766,5	32,08
48B-2	224T	76,2	x	x	48,26	47,70	190,40	29,22	64,20	91,21	12,0	1 000,0	1 200,0	1 260,0	1 200,0	1 260,0	49,50	
TRIPLEX	06B-3	303N	9,525	x	x	6,35	5,77	34,00	3,27	8,23	10,24	2,1	24,9	26,5	30,9	27,0	31,6	1,10
	08B-3	307N	12,7	x	x	8,51	7,75	44,60	4,45	11,80	13,92	1,5	44,5	54,6	61,2	54,6	61,2	1,96
	10B-3	311N	15,875	x	x	10,16	9,65	52,30	5,08	13,70	16,59	1,5	66,7	69,0	81,6	69,0	81,6	2,51
	12B-3	313N	19,05	x	x	12,07	11,68	61,40	5,72	16,20	19,46	1,5	86,7	91,5	104,4	91,5	104,3	3,48
	16B-3	315T	25,4	x	x	15,88	17,02	99,90	8,28	20,80	31,88	3,0	160,0	198,0	228,9	225,0	261,0	7,86
	20B-3	317T	31,75	x	x	19,05	19,56	113,50	10,19	25,40	36,45	6,1	250,0	315,0	342,0	330,0	359,7	11,00
	24B-3	318T	38,1	x	x	25,40	25,40	150,20	14,63	32,30	48,36	6,6	425,0	540,0	594,0	540,0	594,0	20,31
	28B-3	320T	44,45	x	x	27,94	30,95	184,60	15,90	37,00	59,56	7,4	530,0	705,0	756,0	705,0	754,4	28,00
	32B-3	322T	50,8	x	x	29,21	30,99	181,70	17,81	42,30	58,55	7,9	670,0	810,0	864,0	900,0	963,0	29,60
	40B-3	323T	63,5	x	x	39,37	38,10	224,60	22,89	52,80	72,29	12,0	950,0	1 095,0	1 155,0	1 095,0	1 149,8	47,96
48B-3	324T	76,2	x	x	48,26	47,70	281,60	29,22	64,20	91,21	12,0	1 500,0	1 800,0	1 890,0	1 800,0	1 890,0	80,20	
SIMPLEX	Special SEDIS chains																	
	-	2N	9,525	x		6,35	4	10,48	3,28	8,18	.	2,1	.	.	.	9	10,3	.
	-	5T	12,7	x		7,75	5,00	11,80	3,96	10,10	.	1,5	.	11,6	12,9	.	.	0,44
	-	6N	12,7	x	x	8,51	5,35	14,10	4,45	11,80	.	1,5	.	18,2	20,4	18,2	22,8	0,59
	-	10N	15,875	x		10,16	6,50	16,40	5,08	13,70	.	1,5	.	23,0	27,2	.	.	0,75
-	12N	19,05	x	x	12,07	8,00	18,45	5,72	16,30	.	1,5	.	30,5	34,8	.	30,5	1,05	
Double pitch chains (ISO 1275)																		
208B	2007N	25,4	x		8,51	7,75	16,60	4,45	11,50	.	1,5	17,8	17,8	19,8	.	.	.	0,43

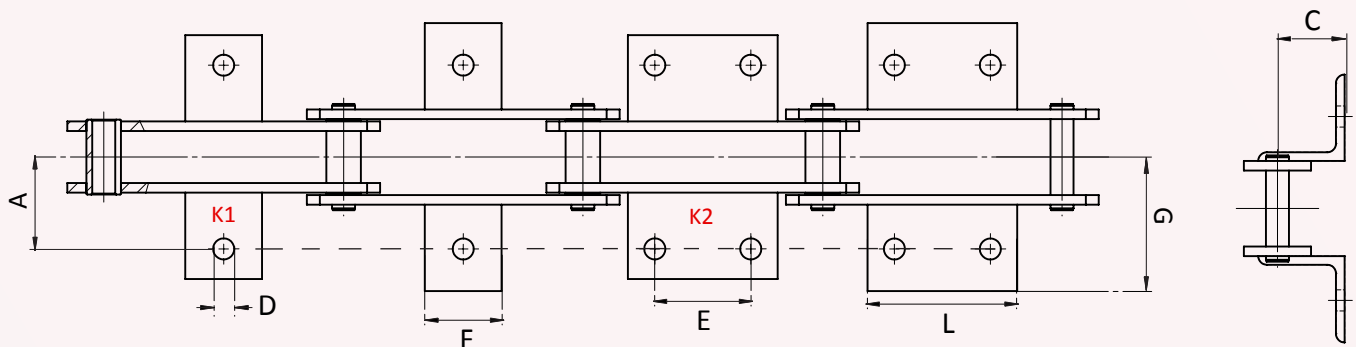
Chains for the brick and tile industry

CONVEYOR CHAINS

CHAINS COMPLYING WITH ISO 1977



WELDED ATTACHMENTS TYPE K



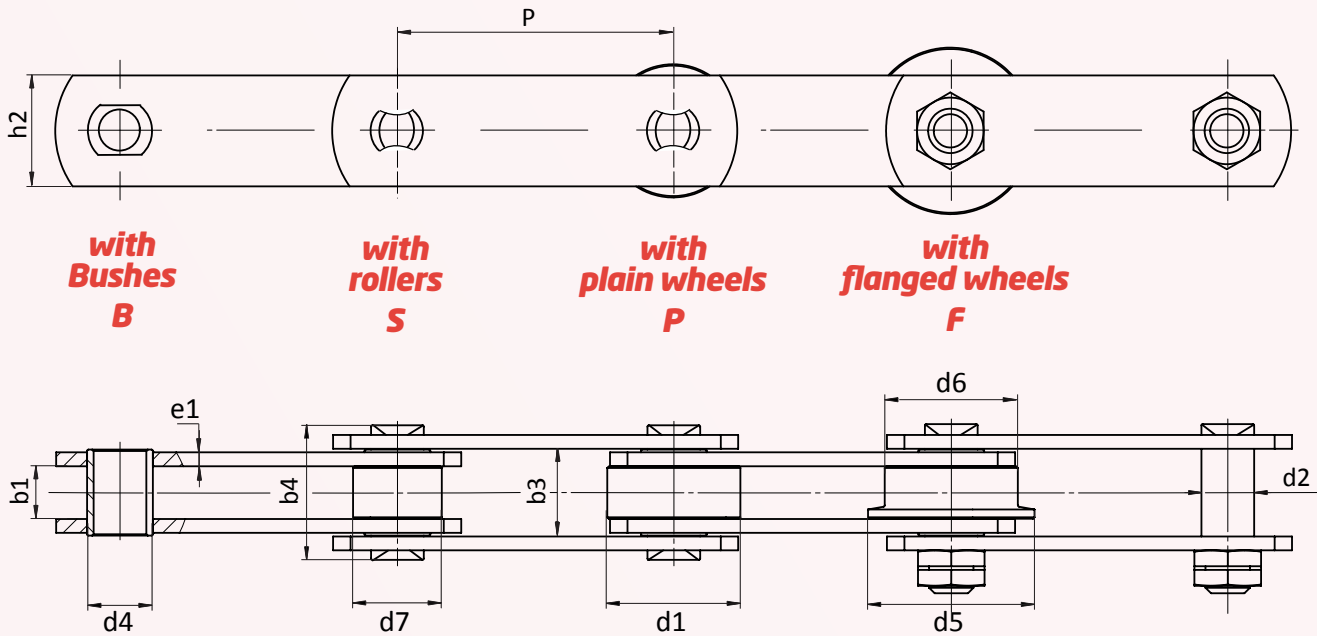
Reference	P mm	b1 mm	b3 mm	b4 mm	d1 mm	d2 mm	d4 mm	d5 mm	d6 mm	d7 mm	h2 mm	e1 mm	e2 mm	Rr kN	A mm	C mm	D mm	E mm	F mm	G mm	L mm
M56	*	25,5	33,6	47,4	42	10	15	50	10,2	21	30	4	4	56	44	30	11	**	**	63	**
M80	*	27,1	39,6	55,4	50	12	18	60		25	35	5	5	80	48	35	11	**	**	71	**
M112	*	31	45,7	62	60	15	21	70	14,3	30	40	5	6	112	55	40	14	**	**	80	**
M160	*	36	52,7	72	70	18	25	85		36	50	6	7	160	62	45	14	**	**	95	**
M224	*	42	60,8	81,2	85	21	30	100		42	60	6	8	224	70	55	18	**	**	110	**
M315	*	47,6	70,8	94,2	100	25	36	120		50	70	8	10	315	80	65	18	**	**	116	**

* All pitches are available, consult us.

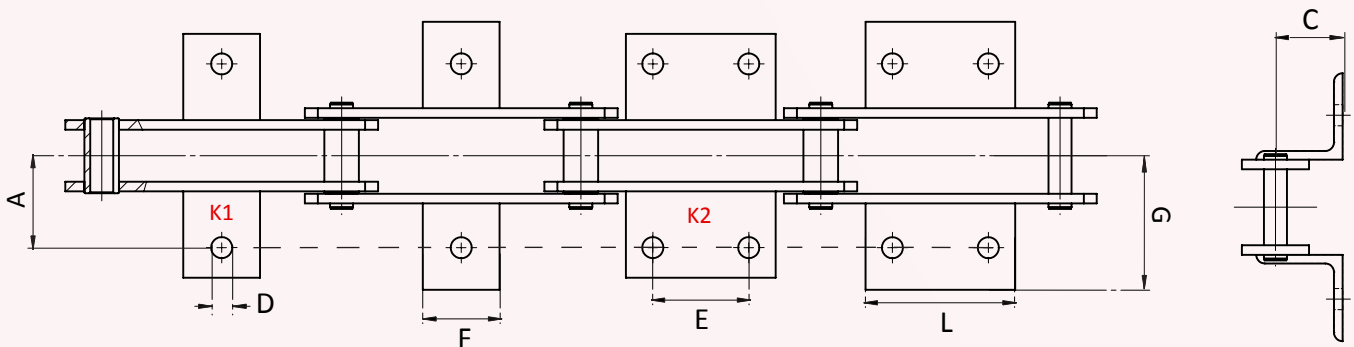
** Dimensions vary according to pitches

THESE CHAINS CAN ALSO BE MANUFACTURED IN DELTA® HR
CONSULT US

CHAINS COMPLYING WITH DIN 8165 - WITH FLATTENED PINS AND BUSHES



ATTACHMENTS TYPE K



Reference	P mm	b1 mm	b3 mm	b4 mm	d1 mm	d2 mm	d4 mm	d5 mm	d6 mm	d7 mm	h2 mm	e1 mm	Rr kN	A mm	C mm	D mm	E mm	F mm	G mm	L mm
FV 63	*	22	31	46	40	12	18	60	50	26	30	4	63	34	30	9	**	**	55	**
FV 90	*	25	36	53	48	14	20	73	63	30	35	5	90	40	35	9	**	**	65	**
FV 112	*	30	43	63	55	16	22	87	72	32	40	6	112	50	40	11	**	**	70	**
FV 140	*	35	48	68	60	18	26	95	80	36	45	6	140	50	45	11	**	**	85	**
FV 180	*	45	62,5	86	70	20	30	120	100	42	50	8	180	64	45	13,5	**	**	95	**
FV 250	*	55	73	98	80	26	36	145	125	50	60	8	250	69	55	13,5	**	**	115	**
FV 315	*	65	87	117	90	30	42	170	140	60	70	10	315	85	60	13,5	**	**	130	**

* All pitches are available, consult us.

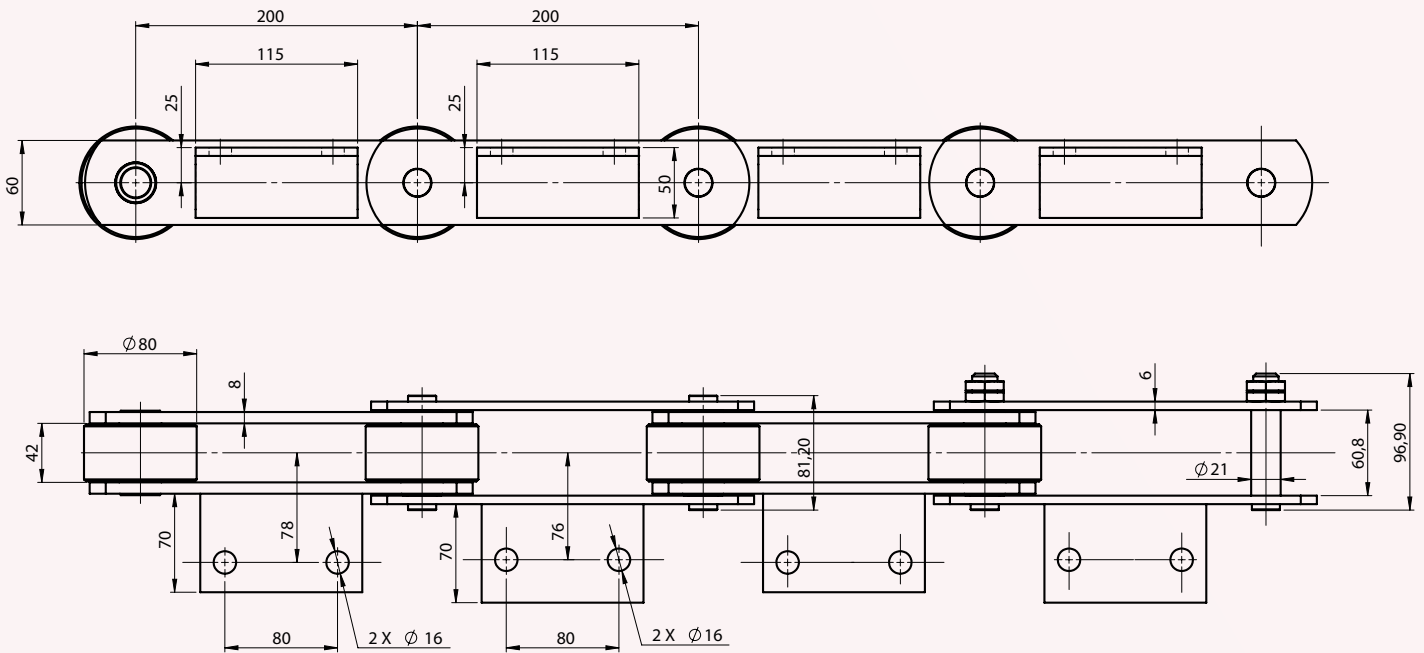
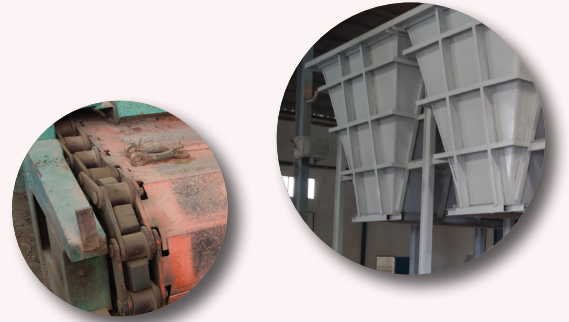
** Dimensions vary according to pitches

Chains for the brick and tile industry

SPECIAL CONVEYOR CHAINS CHAINS FOR METERING HOPPER

EXAMPLE OF FABRICATION

5370-75

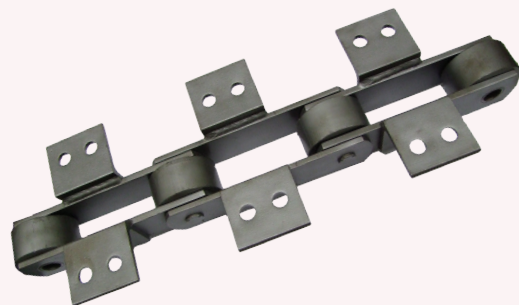


Other dimensions possible. Consult us.

We can supply chains with cranked plates or straight sided plates



cranked plates

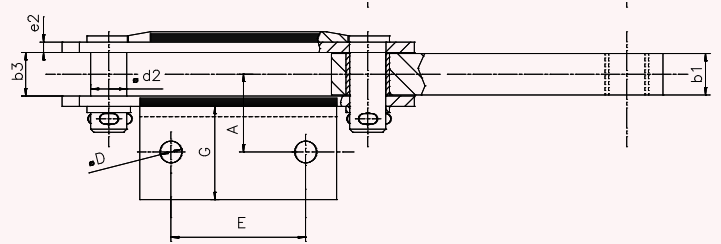
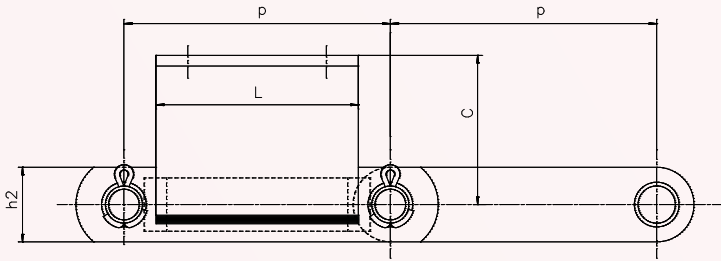
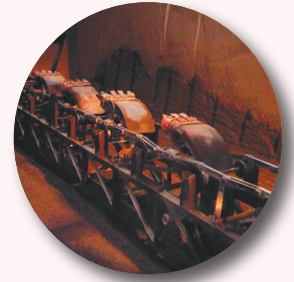
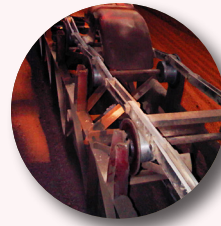


straight sided plates

Chains for the brick and tile industry

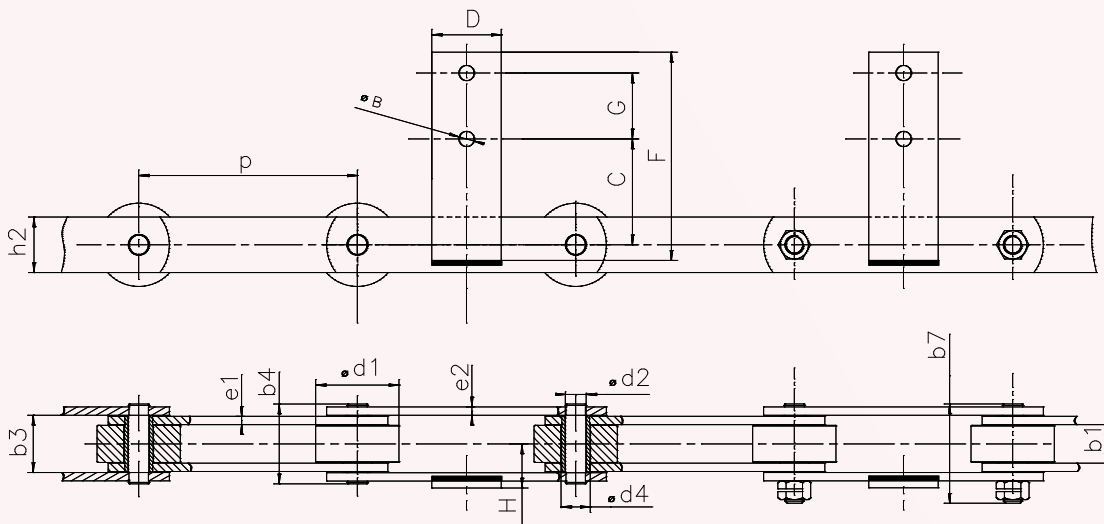
SCRAPER CHAINS

BLOCK CHAINS



Reference	P mm	b1 mm	b3 mm	∅d2 mm	h2 mm	e2 mm	∅D mm	A mm	C mm	G mm	L mm
5741-08	250	40	42	35	70	10	21	75	140	90	190
5741-04	250	40	42	35	70	10	22	70	110	80	140
5741-15	250	40	42	35	70	10	21	70	110	80	150
5741-16	250	40	42	31,5	70	15	23	85	115	80	180
5741-19	250	25	25	18	50	10	-	-	-	-	-

CHAINS WITH M2 ATTACHMENTS

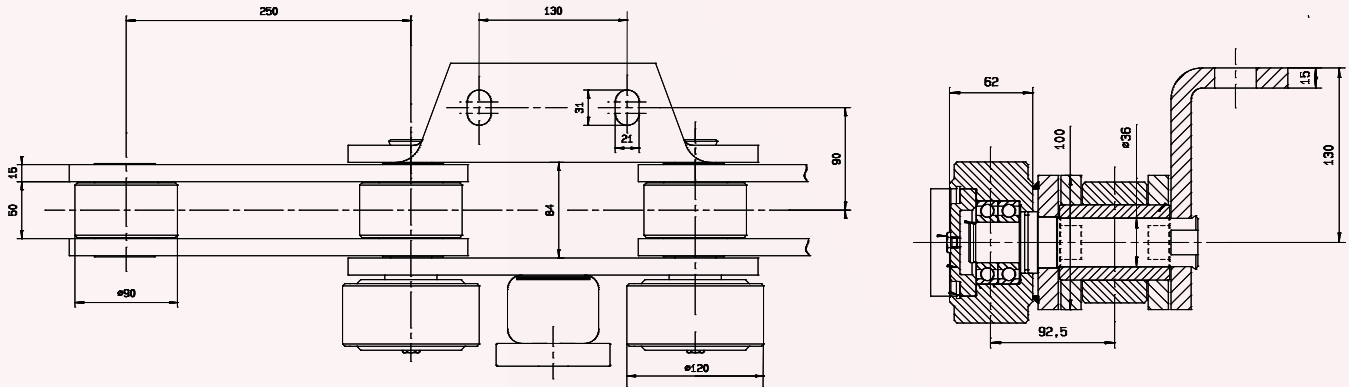


Reference	P mm	b1 mm	b3 mm	b4 mm	b7 mm	d1 mm	d2 mm	d4 mm	h2 mm	e1 mm	e2 mm	∅B mm	C mm	G mm	D mm	F mm	H mm
5478-16	315	55,5	82,5	115	143	120	30	42	80	12	12	21	152,5	95	100	300	63,5
5478-18	315	36	55	77,8	93	70	18	25	50	8	8	17	122,5	85	100	240	41,5

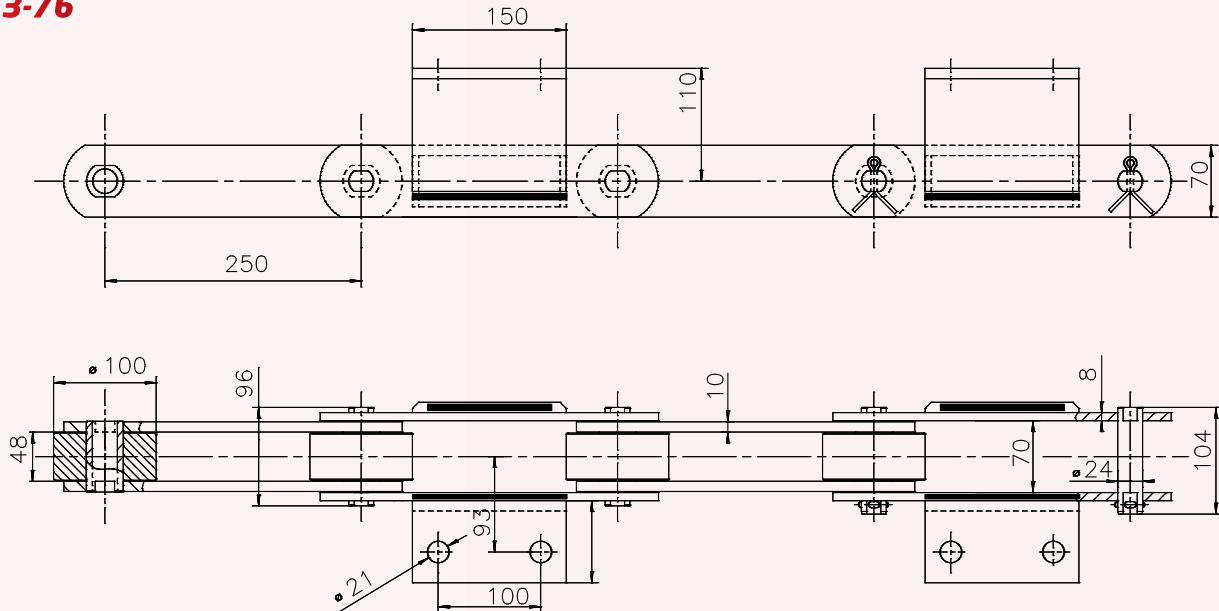
Chains for the brick and tile industry

CHAINS WITH ATTACHMENTS

5343-53

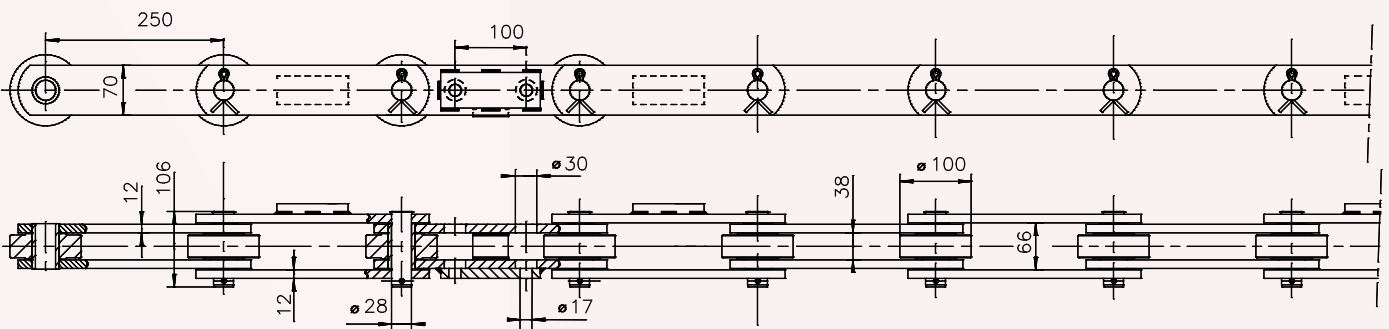


5343-76



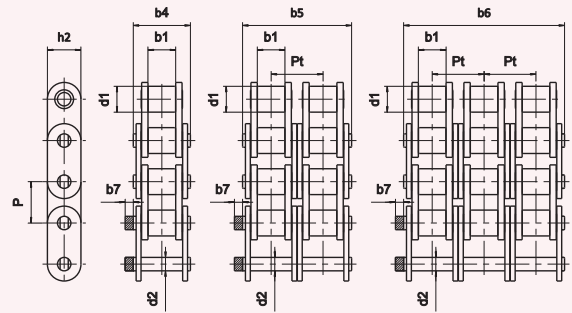
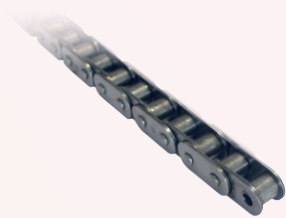
CHAINS WITH FRICTION PLATES

5684-09



Other dimensions possible for the chains on this page. Consult us.

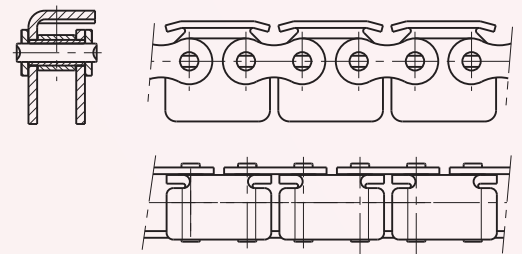
CHAINS FOR PALLET CONVEYORS STRAIGHT SIDED TRANSMISSION CHAINS



References			RANGES		Principal dimensions (mm)							Breaking load			Mass per metre kg	
ISO 606	SEDIS	Pitch P	ALPHA Premium	DELTA® HR	d1	b1	b4 b5 b6		d2	h2	Pt	b7	ISO 606	ALPHA Premium		DELTA® HR
							max.	min.								
BS European chains																
	2ND	9,53		x	6,35	4,10	10,25	3,28	8,2	.	2,1	.	9,0	9,0	0,35	
06B-1	3N	9,53	x	x	6,35	5,77	12,50	3,28	8,2	.	2,1	8,9	9,0	9,0	0,40	
08B-1	7NNE	12,7	x	x	8,51	7,75	16,60	4,45	11,8	.	1,5	17,8	18,2	18,2	0,72	
10B-1	11NNE	15,875	x	x	10,16	9,65	19,00	5,08	13,7	.	1,5	22,2	23,0	23,0	0,96	
12B-1	13NNE	19,05	x	x	12,07	11,68	22,30	5,72	16,2	.	1,5	28,9	30,5	30,5	1,25	
16B-1	15TNE	25,4	x	x	15,88	17,02	35,10	8,28	20,8	.	3,0	60,0	66,0	75,0	2,70	
20B-1	17TNE	31,75	x	x	19,05	19,56	40,50	10,19	25,4	.	8,5	95,0	105,0	110,0	3,90	
24B-1	18TNE	38,1	x	x	25,40	25,40	53,10	14,63	33,4	.	8,5	160,0	180,0	180,0	7,40	
32B-1	22TNE	50,8	x	x	29,10	30,95	63,60	17,81	42,3	.	10,4	250,0	270,0	300,0	10,00	
BS chains also possible in duplex, triplex, quadruplex...																
ANSI American chains																
12A-1	60-1NE	19,05	x	x	11,91	12,65	25,40	5,96	18,0	.	4,0	31,1	38,0	48,0	1,60	
12A-2	60-2NE	19,05	x	x	11,91	12,65	48,30	5,96	18,0	22,78	4,0	62,3	76,0	96,0	3,18	
12A-3	60-3NE	19,05	x	x	11,91	12,65	25,40	5,96	18,0	22,78	4,0	93,4	114,0	144,0	4,76	
24A-1	120-1NE	38,1	x	x	22,22	25,40	49,90	11,06	35,0	.	6,6	124,6	140,0	140,0	6,82	
ANSI American double pitch chains (ISO1275)																
C208A	2040NE	25,4	x	x	7,91	7,85	16,30	3,98	11,5	.	1,5	13,8	16,5	18,0	0,49	
C210A	2050NE	31,75	x	x	10,16	9,65	20,45	5,09	14,5	.	1,5	21,8	27,0	28,0	0,81	
C212A	2060NE	38,1	x	x	11,91	12,65	25,40	5,96	17,5	.	4,0	31,1	38,0	38,0	1,16	

TRANSMISSION CHAINS WITH KC ATTACHMENTS

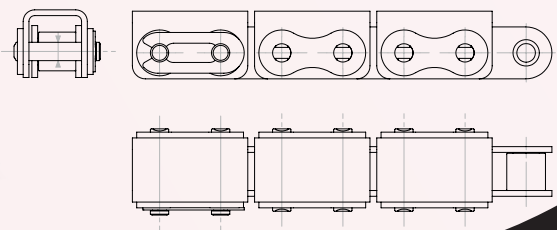
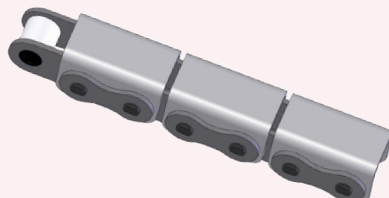
These chains are usually used for small conveyors using two chains moving on a rail guided by rollers and vertical lugs.



Possible from 1/2" pitch (40-1 & 08B-1) to 1" pitch (16B-1).
Vertical guide lugs on request.

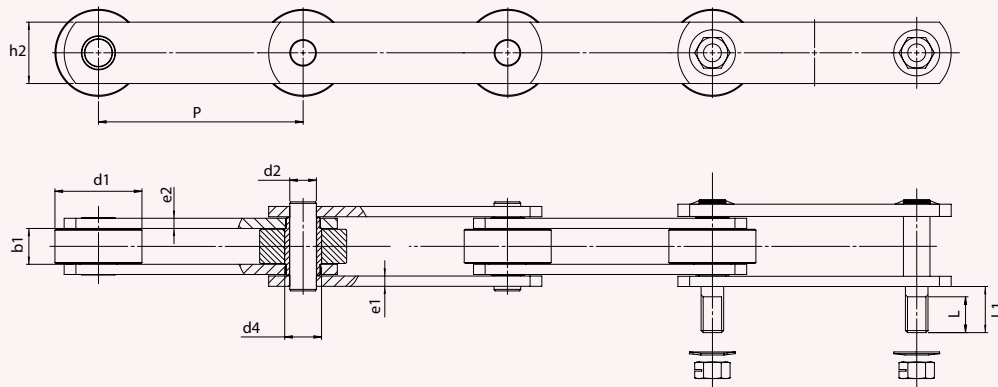
TRANSMISSION BRIDGE CHAINS

Possible from 5/8" pitch (10B-1) to 1" pitch (16B-1).



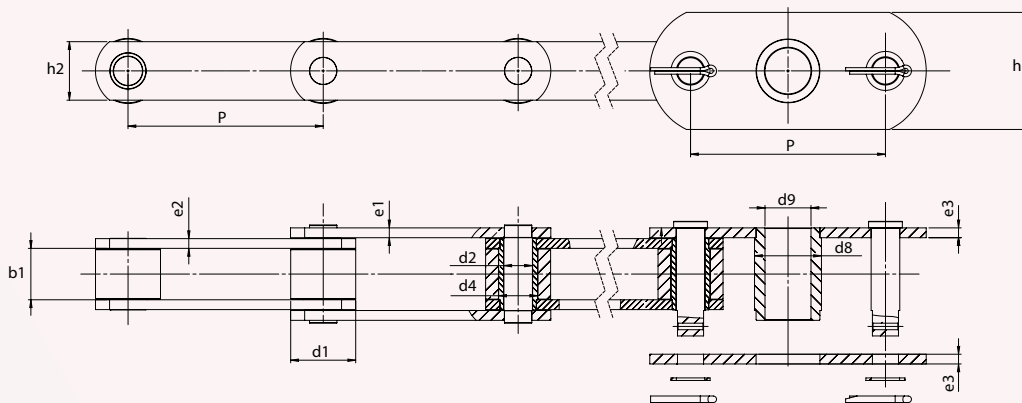
CHAINS FOR SWING DRYER

CHAINS WITH THREADED PINS



Reference	P	b1	d1	d2	d4	h2	e1	e2	Thread of connecting link	L	L1
	mm	mm	mm	mm	mm	mm	mm	mm	mm	mm	mm
5022-13	200	35	85	26	36	60	10	10	M22	35	45
5022-14	200	35	85	26	36	60	10	10	M22	35	45
5022-15	200	35	85	32	42	80	15	15	M27	40	50
5308-60	200	42	85	21	32	60	8	8	M20	35	45
5308-70	200	35	85	28	40	70	10	10	M22	25	45
5308-88	200	44	85	25	36	70	10	10	M20	35	45
5308-91	200	38	85	25	38	60	8	8	M22	35	45
5308-92	200	38	85	30	42	70	12	12	M22	35	45
5581-02	260	67	100	30	42	80	12	12	M27	55	65
5581-05	260	67	100	30	42	80	12	12	M27	50	70
5921-01	200	35	85	25	36	70	10	10	M22	40	50
5921-02	200	35	85	28	40	70	10	10	M22	25	45
5921-12	200	35	85	26	36	60	10	10	M22	35	45
5921-14	200	42	80	22	32	60	10	10	M20	30	40
5921-28	200	41	85	36	46	80	12	15	M22	29	47
5921-71	200	42	80	22	32	60	10	10	M20	30	40

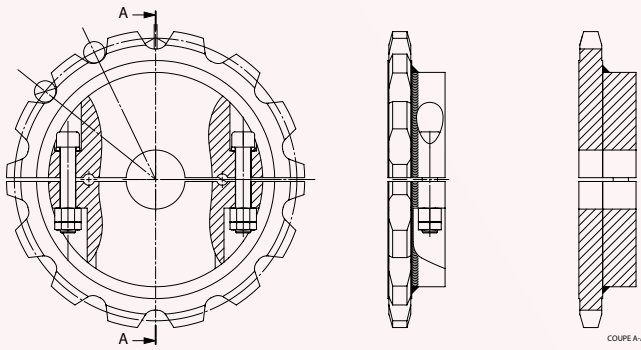
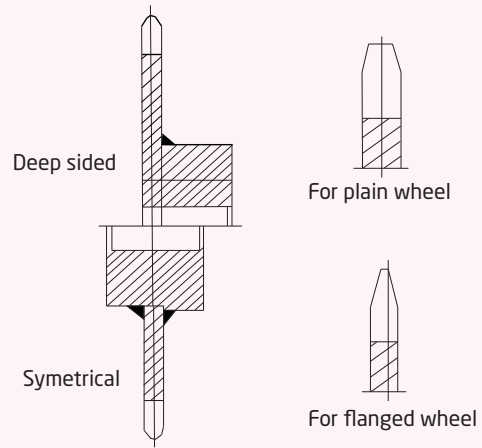
BUSH CHAINS FOR SWING SUPPORT



Reference	P	b1	d1	d2	d4	h2	e1	e2	d8	d9	h	e3	Thread of connecting link
	mm	mm	mm	mm	mm	mm	mm	mm	mm	mm	mm	mm	mm
5851-05	280	43	85	26	36	70	10	12	85	60	128	15	M22
5462-30	300	79	100	44	60	90	15	15	103	70,5	180	15	cottered

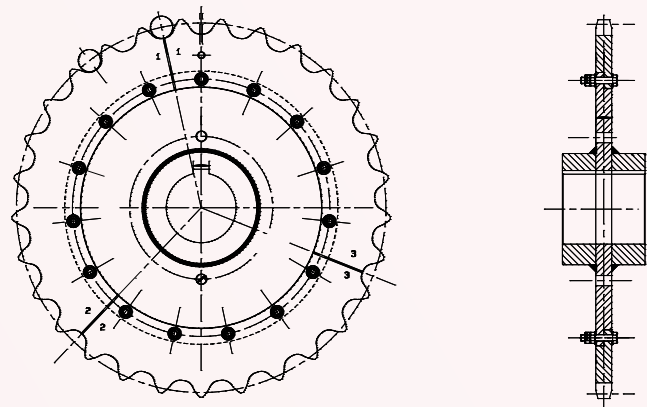
WHEELS & SPROCKETS

MONOBLOC

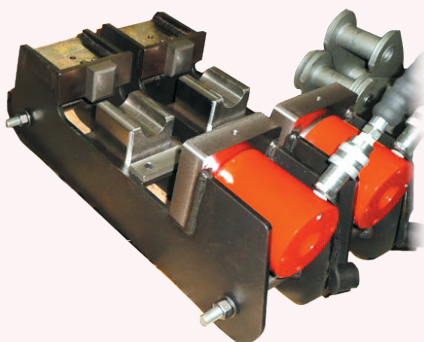


SPLIT (2 parts)

SECTIONAL (3 parts)



TOOL FOR ASSEMBLY AND DISASSEMBLY



For customers who don't wish to use connecting links, we can provide this toll which enables our chains to be riveted.

sedis




murugappa

*For further information
contact us!*

35 Rue des Bas Trévois, CS 90104, 10003 TROYES Cedex - FRANCE
Tel: +33 (0) 3 25 76 29 50 - Fax: +33 (0) 3 25 80 31 62
www.sedis.com - email: <http://sedis.com/contact>