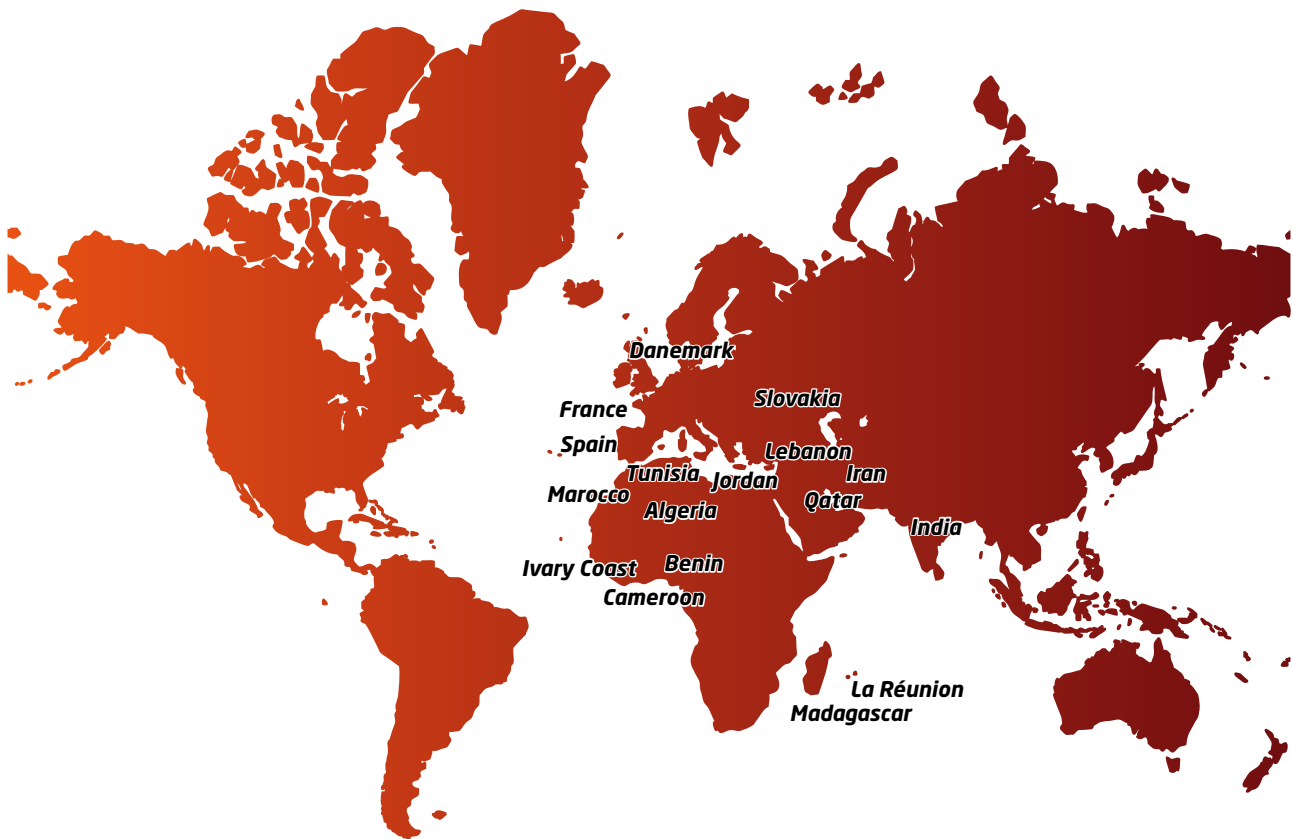


Sedis is sure to find
a solution for your needs !

Cement industry

35, rue des Bas-Trévois
CS 90104 - 10003 Troyes Cedex - France
Tél : +33 (0)3 25 76 29 50 - Fax : +33 (0)3 25 80 31 62
web : www.sedis.com - e-mail : <https://sedis.com/contact>



The latest technology used by prestigious clients

COSMOS - HOLCIM - ITALCEMENTI GROUP - LAFARGE - SECIL - VICAT...

THE DELTA® TREATMENT

For extreme operating conditions

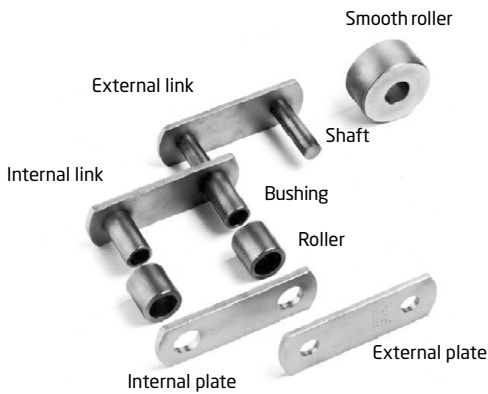
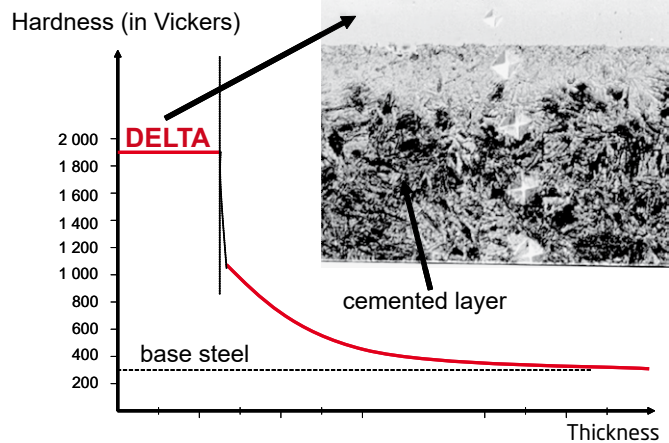


it is especially suitable for

- > Abrasive environments
- > High speeds
- > Haphazard or non-existent lubrication

What is the Delta® treatment ?

A thermochemical treatment invented and implemented by **SEDIS**, which is obtained after carburising, provides the chain's links with remarkable ability to withstand **abrasion and oxidation**. This ability is guaranteed by a surface hardness (1900 Vickers) that is almost 3 times higher than that obtained by using traditional carburisation (700 Vickers).



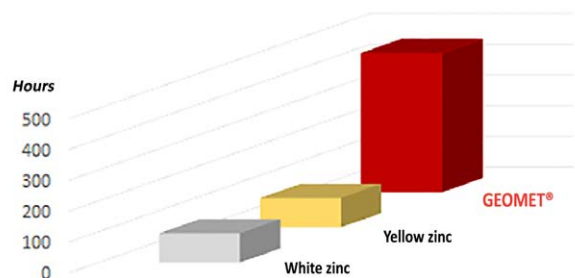
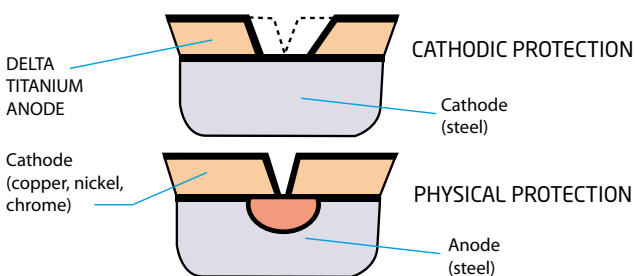
Where is the Delta® treatment used in the SEDIS range ?

- > Transmission Chains
- > Standard handling Chains
- > Special handling Chains

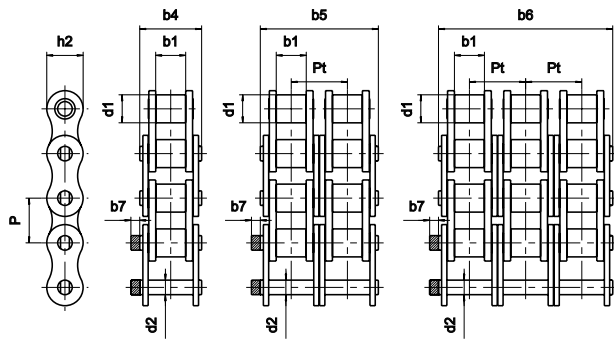
DELTA® TITANIUM TREATMENT

> Corrosion resistance (Zinc & Aluminium coating)

Resistance of anti-corrosion GEOMET coating in salt spray according to ASTM B117



Transmission chains - Delta® HR Range



Chain

Dimensions in mm



206



208



216



205



217



221



209



200

Tensile resistance

Connecting links

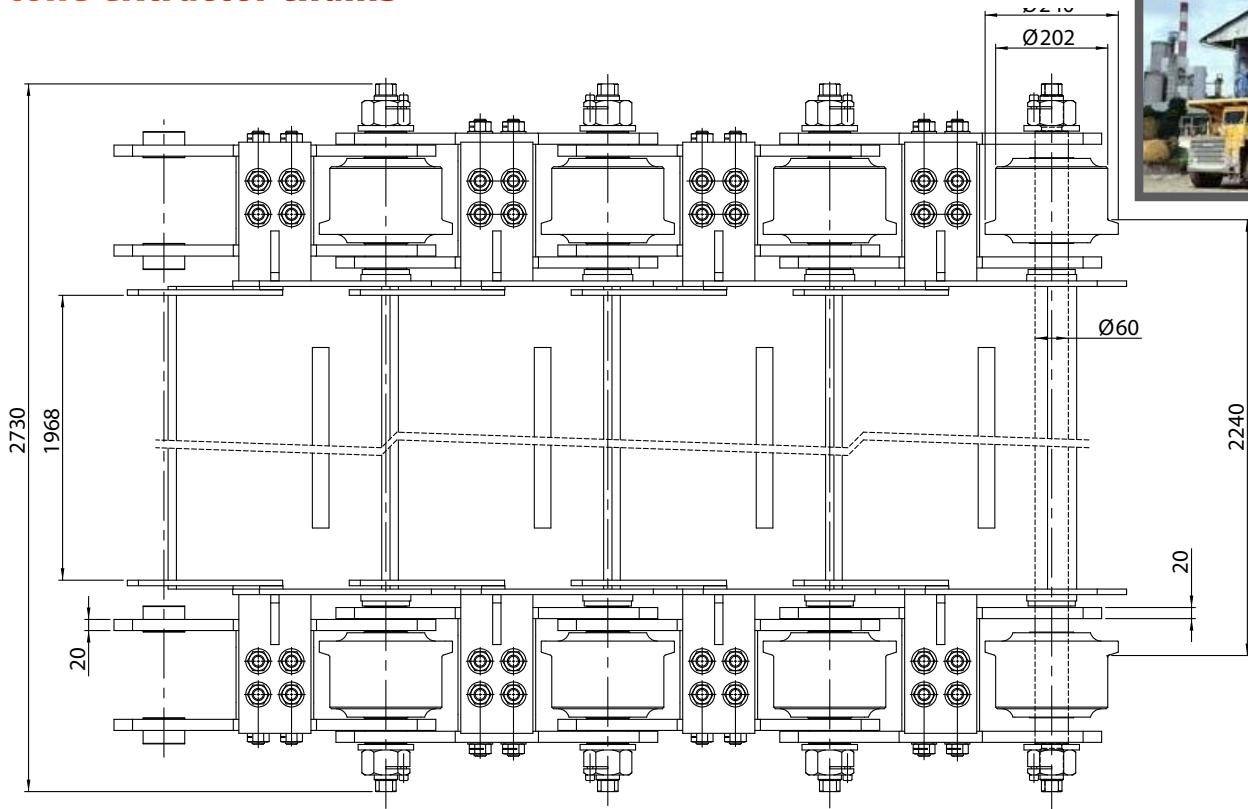
ISO 606	SEDIS chain	Pitch (inclu)	Pitch mm	Roller Ø	Tringer width	Pin length	Pin diameter	Plate height	Transversal pitch	Axis rate	Standar ISO 606	min	Avg	200	205	206	208	209	216	217	221
		P	P	d1	b1	b4	d2	h2	Pt	B7											
Single BS																					
08B-1	7ND	1/2"	12,7	8,51	7,75	16,6	4,45	11,8		1,5	17,8	18,2	20,4	✓	✓	✓			✓		✓
10B-1	11ND	5/8"	15,875	10,16	9,65	19	5,08	13,7		1,5	22,2	23	27,2	✓	✓	✓			✓		✓
12B-1	13ND	3/4"	19,05	12,07	11,68	22,3	5,72	16,2		1,5	28,9	30,5	34,8	✓	✓	✓			✓		✓
16B-1	15TD	1"	25,4	15,88	17,02	35,1	8,28	20,8		3	60	75	87	✓	✓	✓	✓		✓		✓
20B-1	17TD	1 1/4"	31,75	19,05	19,56	40,5	10,19	25,4		6,1	95	110	119	✓	✓	✓	✓		✓		✓
24B-1	18TD	1 1/2"	38,1	25,4	25,4	53,1	14,63	32,3		6,6	160	180	198	✓	✓	✓	✓		✓	✓	✓
28B-1	20TD	1 3/4"	44,45	27,94	30,95	65,1	15,9	37		7,4	200	235	251,5	✓	✓	✓	✓		✓		✓
32B-1	22TD	2"	50,8	29,21	30,99	63,6	17,81	42,3		7,9	250	300	321	✓	✓	✓	✓		✓		✓
Double BS																					
08B-2	207ND	1/2"	12,7	8,51	7,75	30,6	4,45	11,8	13,92	1,5	31,1	36,4	40,8	✓	✓	✓			✓		✓
10B-2	211ND	5/8"	15,875	10,16	9,65	35,75	5,08	13,7	16,59	1,5	44,5	46	54,4	✓	✓	✓			✓		✓
12B-2	213ND	3/4"	19,05	12,07	11,68	41,8	5,72	16,2	19,46	1,5	57,8	61	69,5	✓	✓	✓			✓		✓
16B-2	215TD	1"	25,4	15,88	17,02	68	8,28	20,8	31,88	3	106	150	174	✓	✓	✓	✓		✓		✓
20B-2	217TD	1 1/4"	31,75	19,05	19,56	77	10,19	25,4	36,45	6,1	170	220	239,8	✓	✓	✓	✓		✓	✓	✓
24B-2	218TD	1 1/2"	38,1	25,4	25,4	101,8	14,63	32,3	48,36	6,6	280	360	396	✓	✓	✓	✓		✓	✓	✓
28B-2	220TD	1 3/4"	44,45	27,94	30,95	124,7	15,9	37	59,56	7,4	360	470	502,9	✓	✓	✓	✓		✓	✓	✓
32B-2	222TD	2"	50,8	29,21	30,99	122,8	17,81	42,3	58,55	7,9	450	600	642	✓	✓	✓	✓		✓	✓	✓
Triple BS																					
09B-3	307ND	1/2"	12,7	8,51	7,75	44,6	4,45	11,8	13,92	1,5	44,5	54,6	61,2	✓	✓	✓			✓		✓
10B-3	311ND	5/8"	15,875	10,16	9,65	52,3	5,08	13,7	16,59	1,5	66,7	69	81,6	✓	✓	✓			✓		✓
12B-3	313ND	3/4"	19,05	12,07	11,68	61,4	5,72	16,2	19,46	1,5	86,7	91,5	104,3	✓	✓	✓			✓		✓
16B-3	315TD	1"	25,4	15,88	17,02	99,9	8,28	20,8	31,88	3	160	225	261	✓	✓	✓	✓		✓		✓
20B-3	317TD	1 1/4"	31,75	19,05	19,56	113,5	10,19	25,4	36,45	6,1	250	330	359,7	✓	✓	✓	✓		✓	✓	✓
24B-3	318TD	1 1/2"	38,1	25,4	25,4	150,2	14,63	32,3	48,36	6,6	425	540	594	✓	✓	✓	✓		✓	✓	✓
28B-3	320TD	1 3/4"	44,45	27,94	30,95	184,6	15,9	37	59,56	7,4	530	705	754,4	✓	✓	✓	✓		✓	✓	✓
32B-3	322TD	2"	50,8	29,21	30,99	181,7	17,81	42,3	58,55	7,9	670	900	963	✓	✓	✓	✓		✓	✓	✓

DELTA® chains are particularly adapted for the packaging of cement.

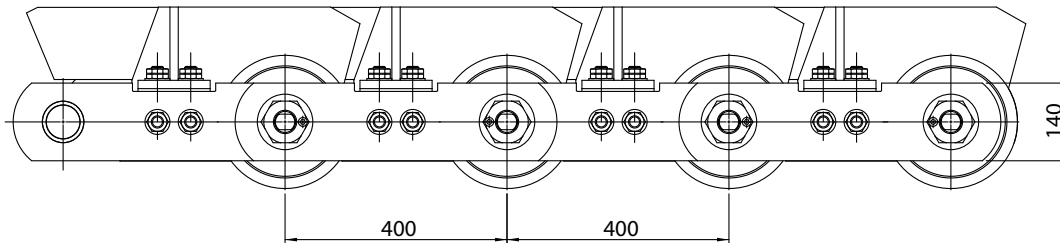
- Where there is no possibility of lubricating, due to abrasive cement dust.
- Our experience allows us to multiply the life expectancy of the DELTA® chains 2 or 3 fold.



Stone extractor chains

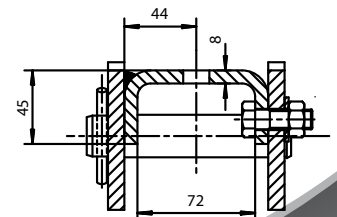
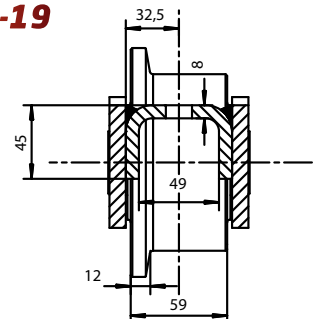
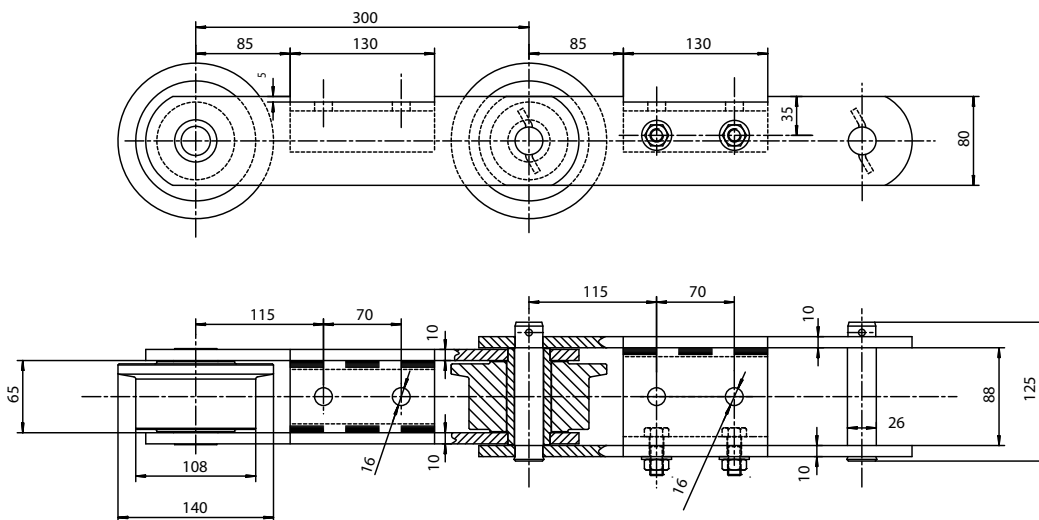


5087-18



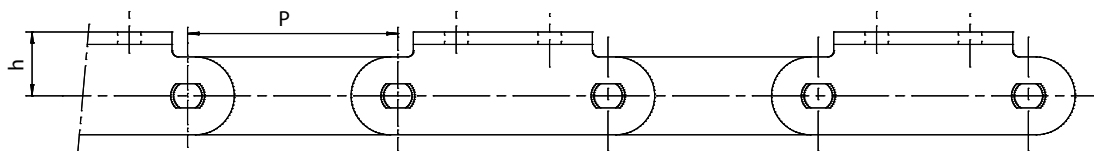
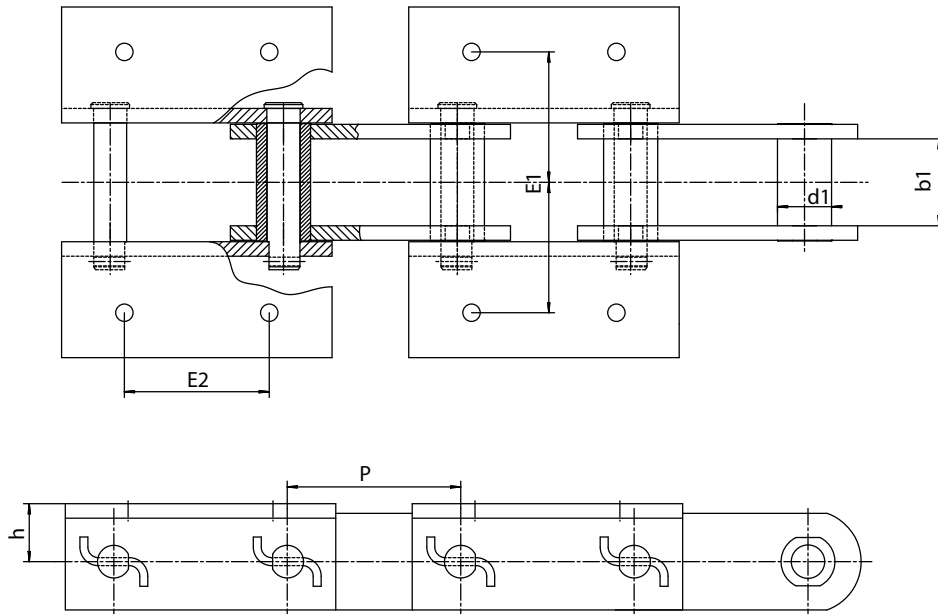
Feeder chains

5462-19

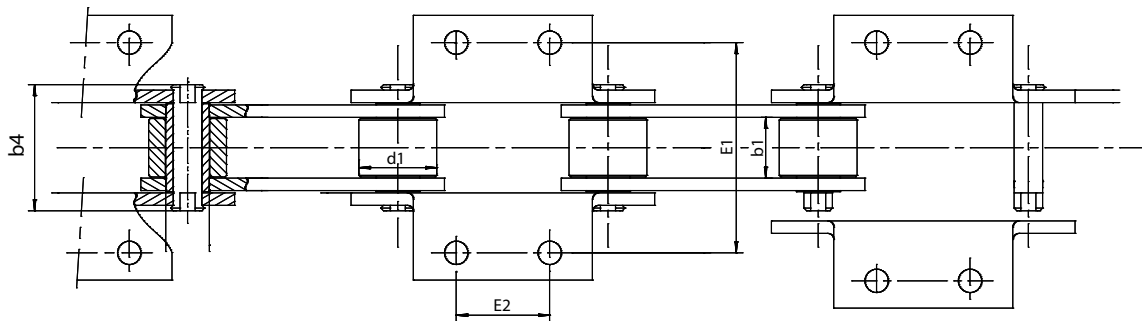


Centrifugal elevator chains

5114-02

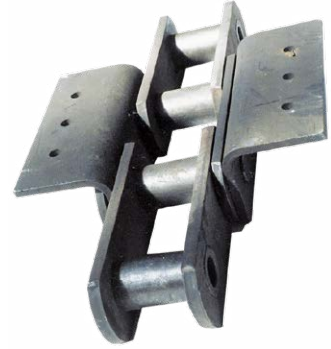
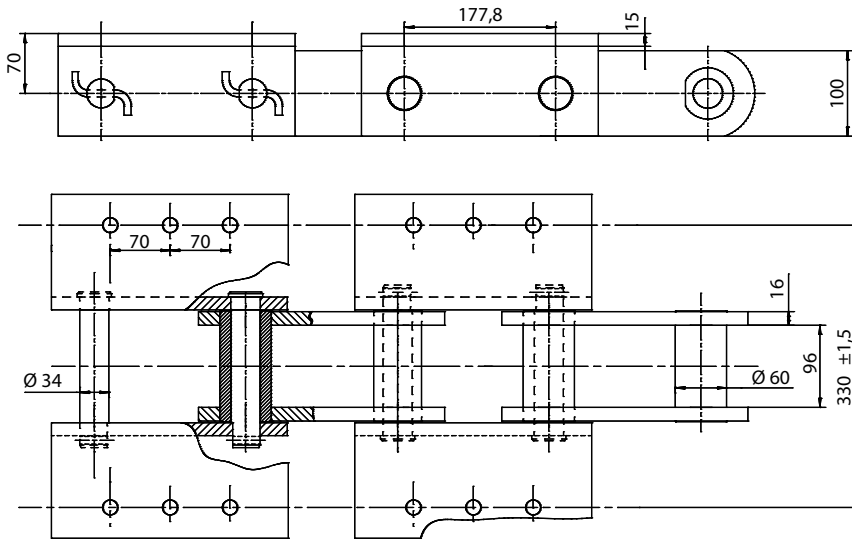


5816-01



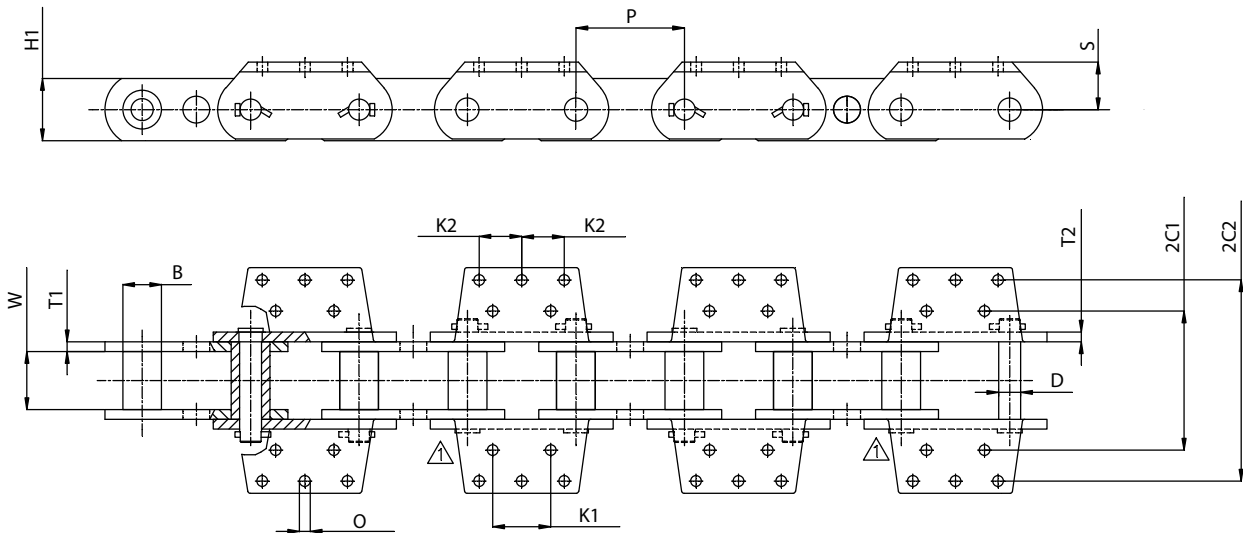
Chain	Pitch P	b1	d1	b4	h	E1	E2
5816-01	135	39	50	81	41	135	60
5343-24	250	65	85		95	240	147
5343-32	250	65	85	139	95	240	147
5114-02	180	90	56		60	270	150

Cement industry chains



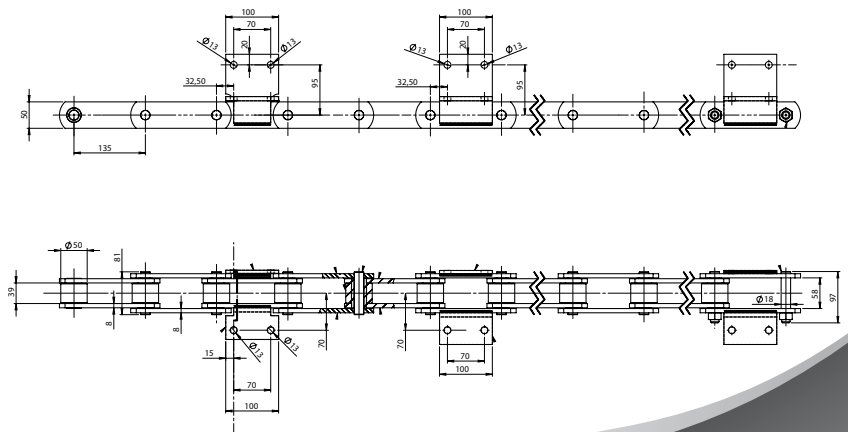
5794-01

Elevator chains with K443 attachments

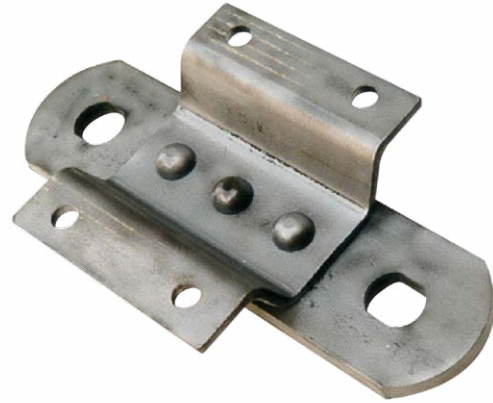


P	W	H1	T1	T2	B	D	S	2C1	2C2	K1	K2	O
177,8	95,3	102	16	16	63,5	34,9	76,2	228	330	95,3	69,85	17,5
177,8	95,3	101,6	16	16	60,3	31,75	76,2	228,6	330,2	95,3	69,85	17,5
152,4	76,2	76,2	12,7	12,7	44,5	25,4	47,8	184		63,5		17,5
152,4	76,2	83,5	14	14	51	28,6	63,5	178	305	88,9		14,2
152,4	76,2	82,6	12,7	12,7	44,45	25,4	63,5	177,8	304,8	88,9		15
152,4	76	63,5	12,7	12,7	44,5	25,4	47,65	183		64		17,5

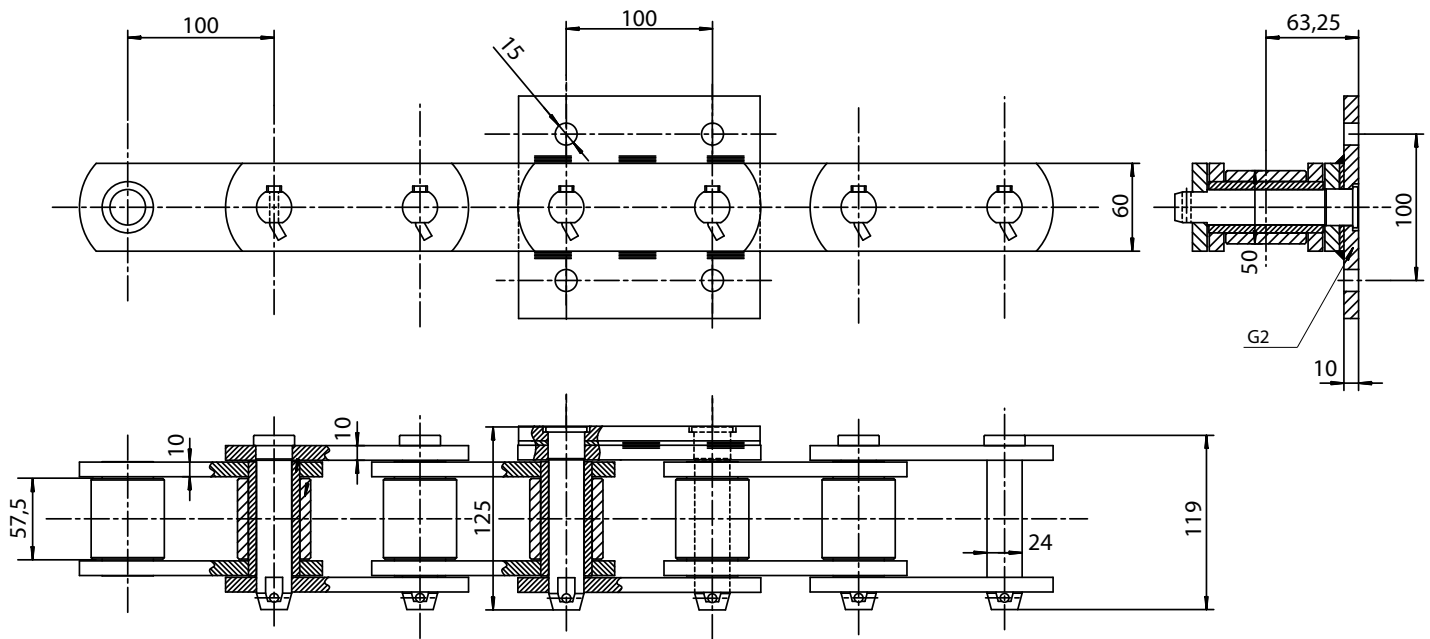
5315-18



Elevator chains with central discharge



5890-28



Technical information to determine an elevator

Elevator type : mono chain or bi-chain

Output : tonnes / hour

Distance between centres :meters

Product transported :

Nature of product :

Density of product :

Chain speed : meters/second

Operating time : hours / year

Buckets :

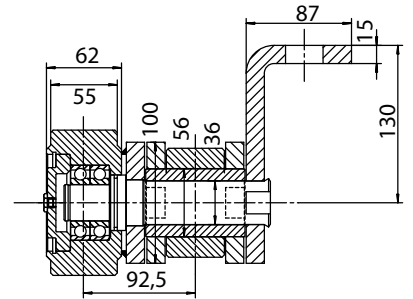
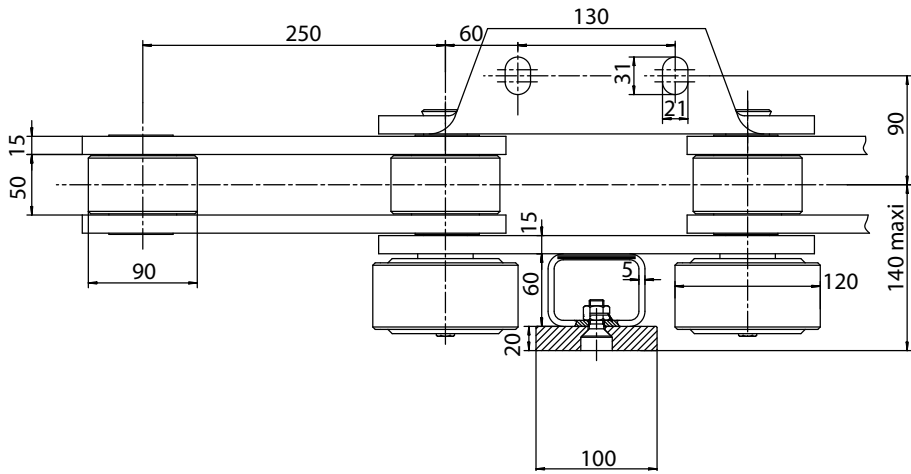
number of buckets :

weight of bucket : kg

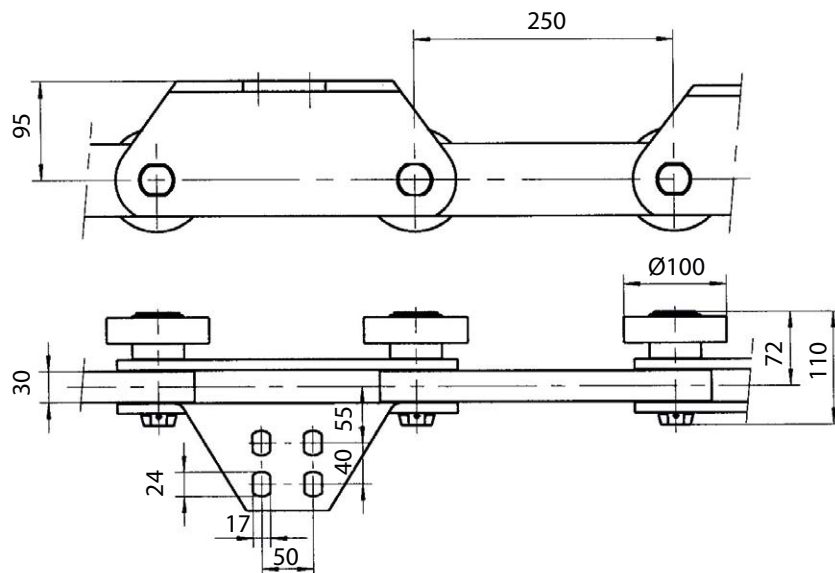
volume when full of water : litres

Excavator or scraper chains

5343-53

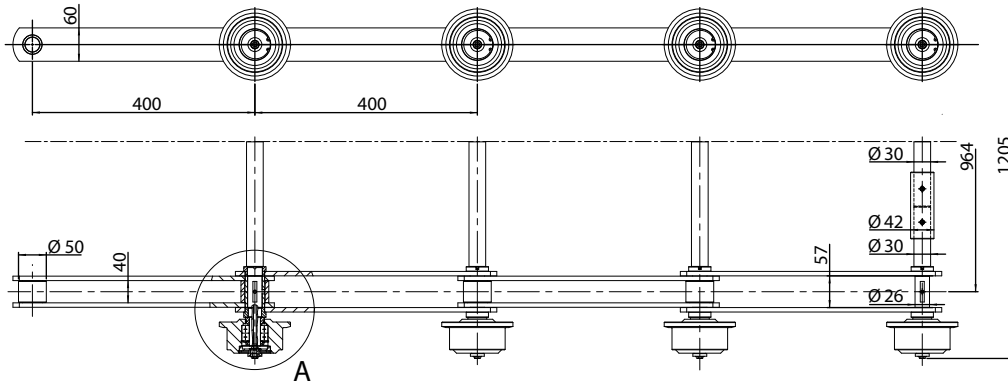


5741-03

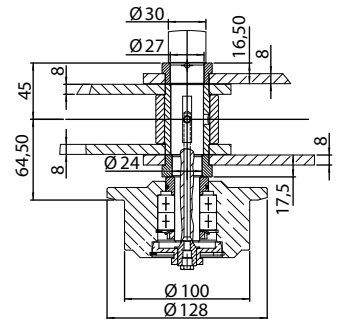


Flat or inclined conveyor chains

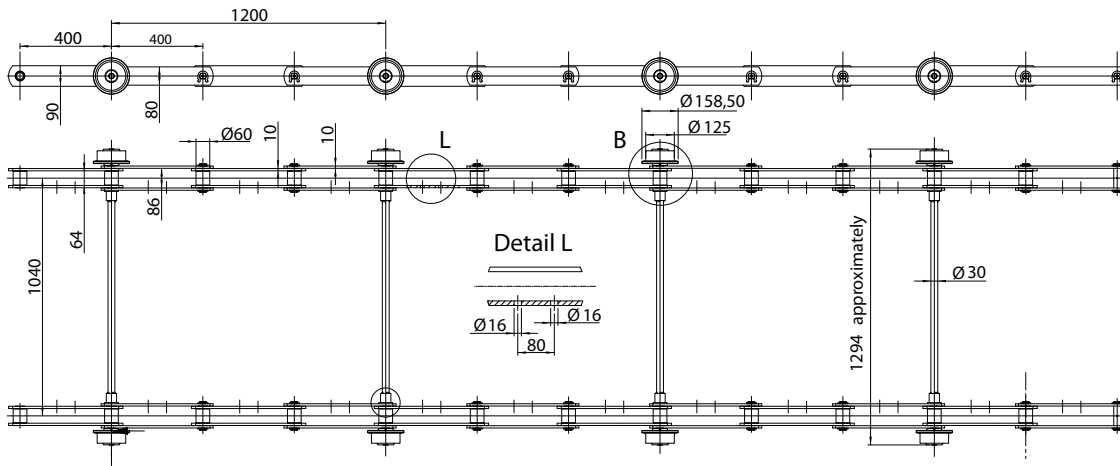
5088-11



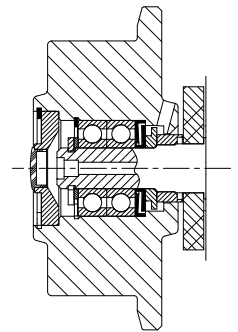
Detail A



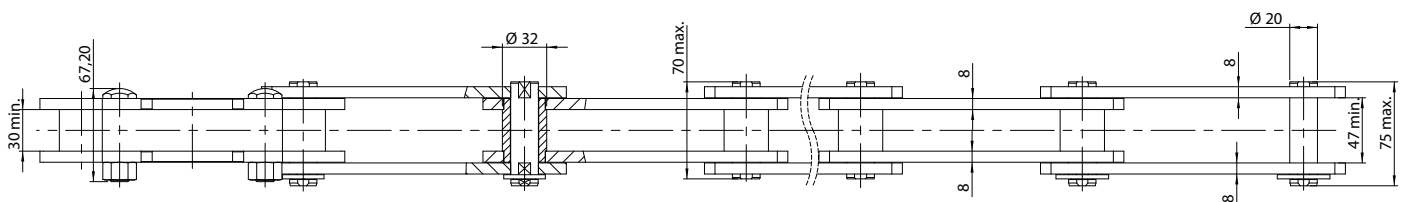
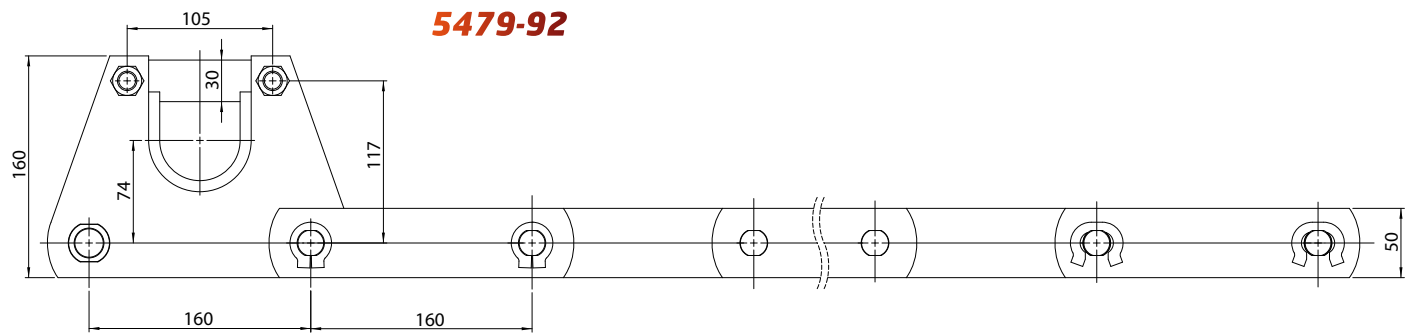
5087-16



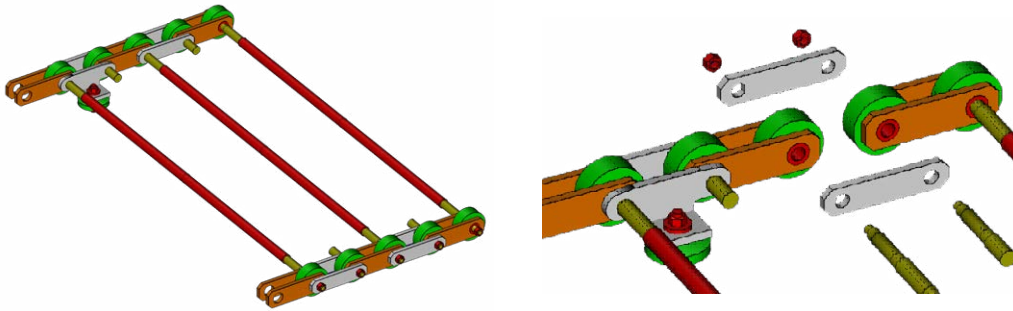
Detail B



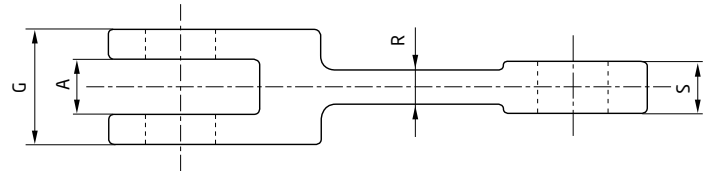
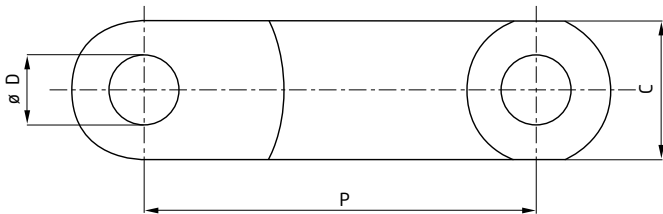
5479-92



Ingot mould chain

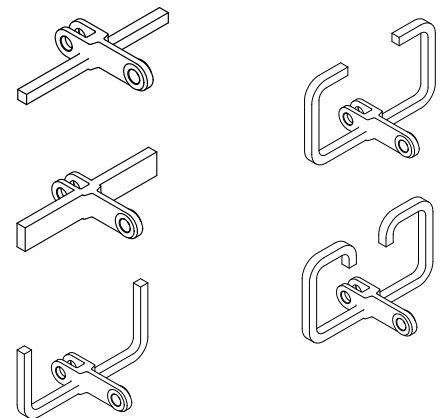


Forged chains



Different equipment

Pitch	G	C	S	A	R	D	Tensile resistance
101,6	30	36	13	14	9	14	180 à 330
142	62	50	28	30	15	25	440 à 790
160	50	53	23	25	13	25	370 à 655
200	66	60	30	32	20	30	500 à 900
250	70	75	32	34	18	32	735 à 1430

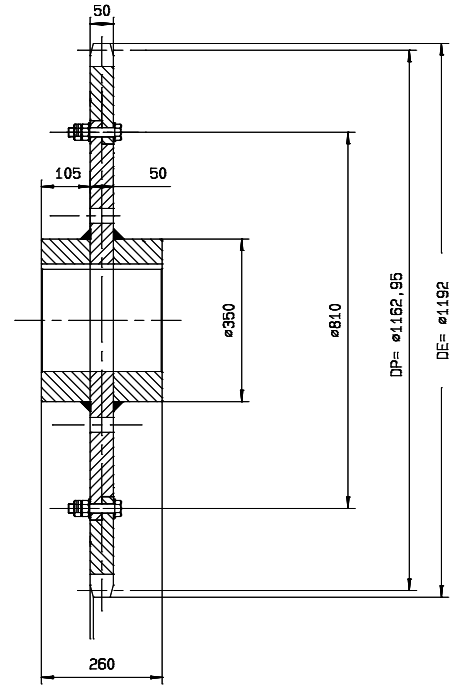
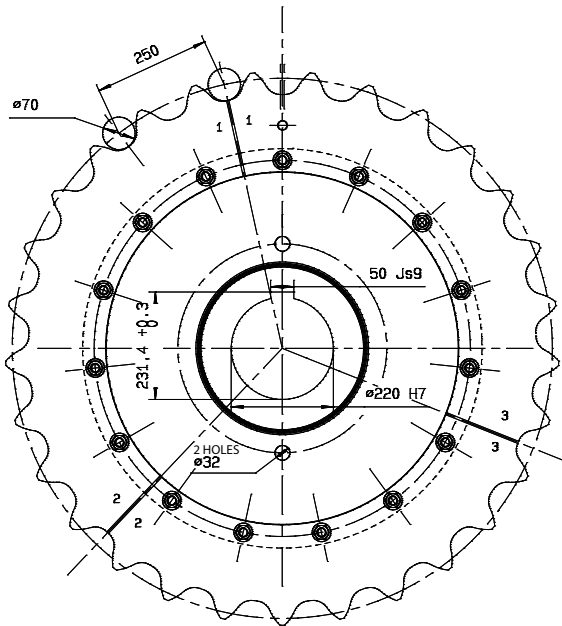


Tools for assembly and disassembly



For clients who do not wish to use connecting links, we can provide this assembly and disassembly tool which enables our chain to be riveted.

Sectional sprockets



Monoblocs sprockets

