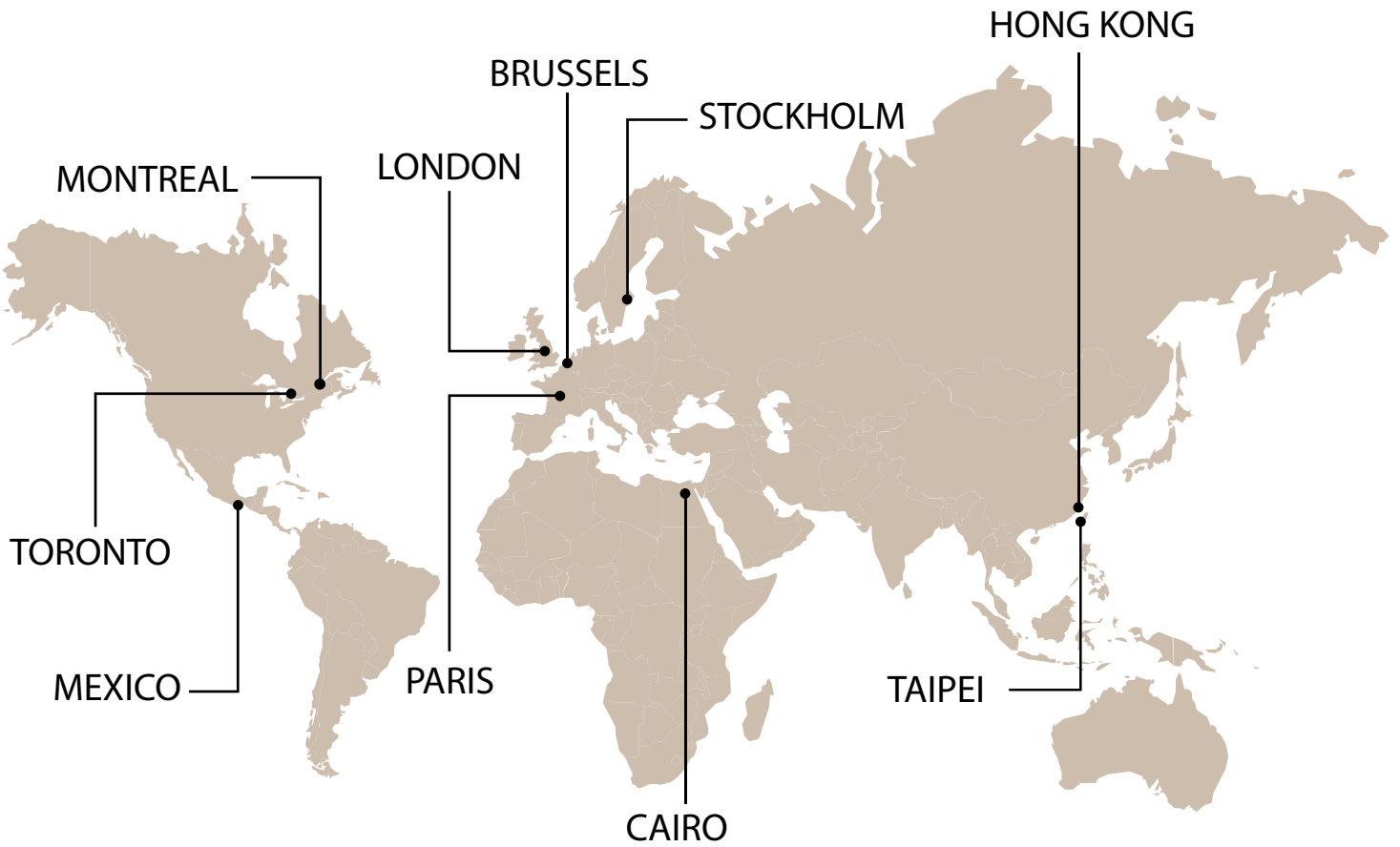


The specialist for the replacement of
heavy duty public escalator
and moving walkway chains

ESCALATORS

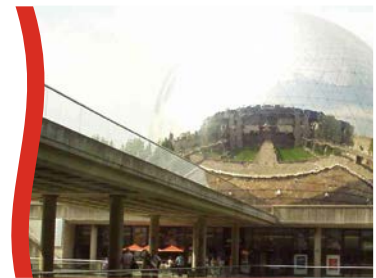
35, rue des Bas-Trévois
BP 104 - 10003 Troyes Cedex - France
Tél : +33 (0)3 25 76 29 50 - Fax : +33 (0)3 25 80 31 62
web : www.sedis.com - e-mail : <https://sedis.com/contact>

Present for over 40 years in the major cities of the world ...



POMPIDOU Center (Paris)

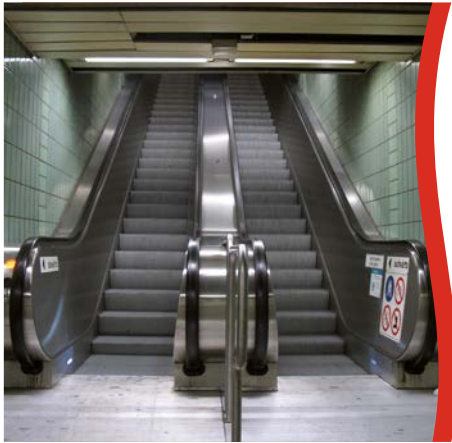
... and others



City of Science (Paris)

Advanced technology bringing us loyal and prestigious customers such as :
Cnim, Kone, Otis, Schindler, Ratp, Baa Heathrow, Tube Lines, Metronet, Aéroports De Paris, SnCF ...

Replacement of all types, technologies and sizes



40 years of research and development have enabled us to offer today over 300 models of light and heavy duty public escalators and travelators.

All technologies:

- > CHAÎNE VERTE® (green chain) without lubrication.
- > DELTA® chains operating between underground and surface level. (forced through articulation lubrication)
- > Standard chains (Drop feed plate lubrication)

All types of chains:

- > Hollow pin chains.
- > Extended pin step chains.
- > Twin strand chains with integral or outboard wheels.
- > Auxiliary Chains : hand rail drive and main drive chains (see table below)



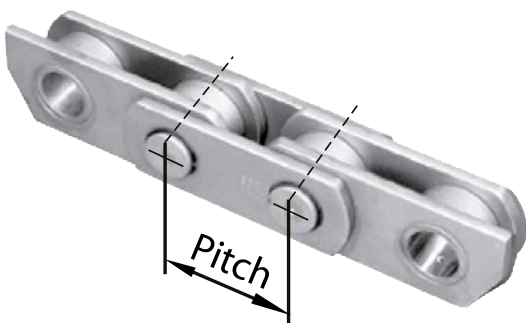
All Sizes:

100mm to 203.20mm pitch:

100,00 mm	133,33 mm
101,15 mm	135,00 mm
101,25 mm	135,46 mm
101,60 mm	203,20 mm

Other pitches upon request

Breaking loads from 50 to 760 kN



		Pitch (mm)	ISO	SEDIS ALPHA <i>Premium</i>	SEDIS DELTA Δ	CHAINES VERTES
BS European Series ISO	Simplex	19,05	12B-1	•	•	•
		25,40	16B-1	•	•	•
		31,75	20B-1	•	•	•
		38,10	24B-1	•	•	•
		50,80	32B-1	•	•	•
	Duplex	25,40	16B-2	•	•	•
		31,75	20B-2	•	•	•
		38,10	24B-2	•	•	•
		44,45	28B-2	•	•	•
		50,80	32B-2	•	•	•
	Triplex	31,75	20B-3	•	•	•
		38,10	24B-3	•	•	•
		44,45	28B-3	•	•	•
		63,50	40B-3	•	•	•
				Pitch (mm)	ISO	SEDIS ALPHA <i>Premium</i>
ANSI American Series ASA	Simplex	19,05	12A-1	•	•	
		25,40	16A-1	•	•	
		31,75	20A-1	•	•	
		38,10	28A-1	•	•	
		50,80	32A-1	•	•	
	Duplex	44,45	28A-2	•	•	
		50,80	32A-2	•	•	
		31,75	20A-3	•	•	
		44,45	28A-3	•	•	
		63,50	40A-3	•	•	

CHAÎNE VERTE® (green chain)

History of the CHAÎNE VERTE® (green chain)

1977: Development of a bush in a self-lubricating plastic material for GEC Destined for the English nuclear industry. The material selection was made using a test rig which was designed and built by SEDIS as part of the research made into the tribological improvement of the articulation of the chain bushes/pins. A patent was made of the type of chain known as SEDISVIE (SEDISLIFE) the suffix 'VIE' (LIFE) signifying the 'lubricated for life' of the equipment on which the chains were installed.

1979: Installation of 2 chains SEDISVIE on the RATP (Paris metro) mechanical escalators, one of which is on the CHAMPS ELYSEES.

1982: Installation of a chain SEDISVIE on an escalator in the Brussels Metro.

(Note: Outdoor mechanical escalators subject to adverse conditions).

1986: Still aiming for the same objective, SEDIS finalise the chain SEDIS EP which also includes anti-corrosion treatment and self-lubricating pins.

1991: AUTO LUB Chain for a London Underground mechanical escalator. In operation for over 10000 hours with wear barely measurable, giving hope for a life expectancy of 40 years.

1993: CHAÎNE VERTE® (green chain) for the RATP (Paris metro) on an O&K mechanical escalator.

1994: Manufacture of several CHAÎNES VERTE® (green chains) for the RATP, CNIM, OTIS, O&K and THYSSEN.

1996 – 2002: Generalisation of CHAÎNE VERTE® (green chain) for the London Metro.

2003 – 2007: Generalisation of CHAÎNE VERTE® (green chain) for the Paris Metro.

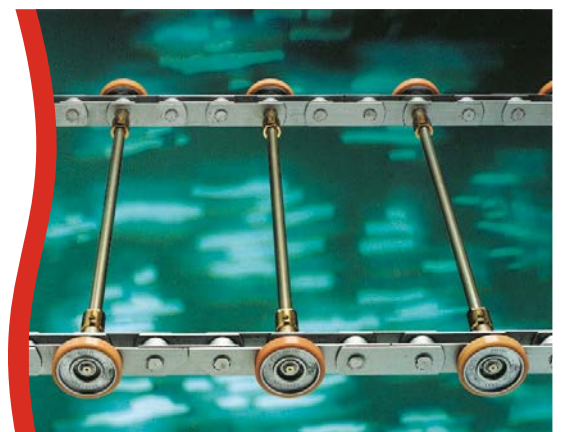


Why a Chaîne Verte® (green chain)?

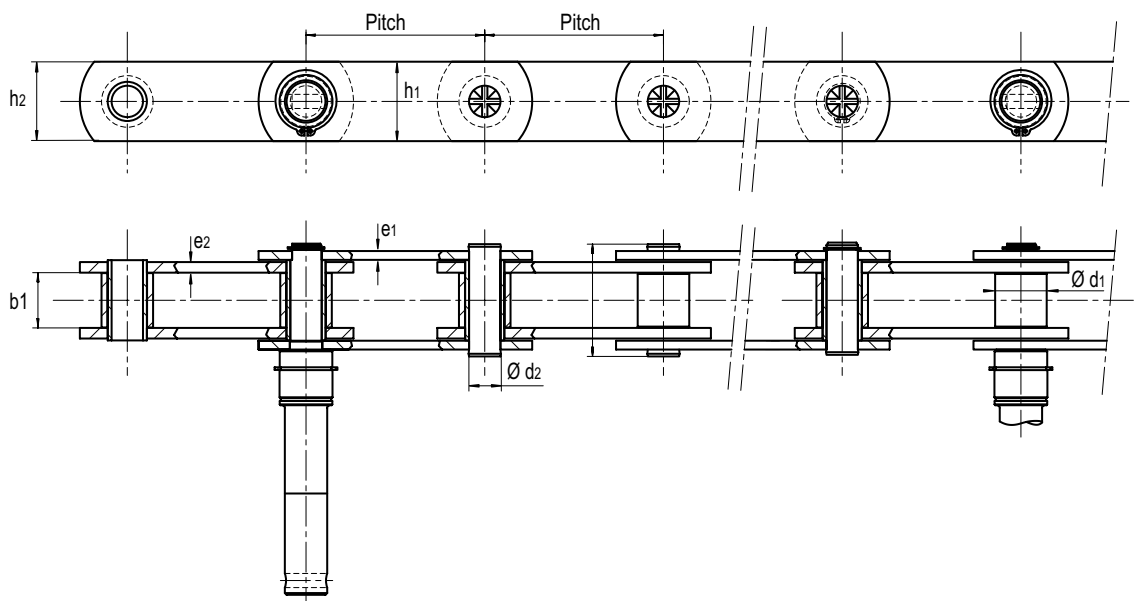
- > Important reduction in maintenance costs (no lubrication required)
- > No grease pollution
- > Environmentally friendly
- > Significant reduction of fire risk
- > Improvement of strength, and in particular, the
- > increase in the escalator's level of use

- > Our experience at your service
 - SEDIS installs over 20000 meters of CHAÎNE VERTE® (green chain) each year in a number of demanding applications (motor industry, underground... operating under low (Alaska) normal and high (ovens) temperatures.

- > A unique and patented technology:
 - Based on the combination of a Delta pin, a superior hardness that we can obtain by certain treatments and a composite, self lubricating bush with a high load capacity and a low rubbing coefficient.

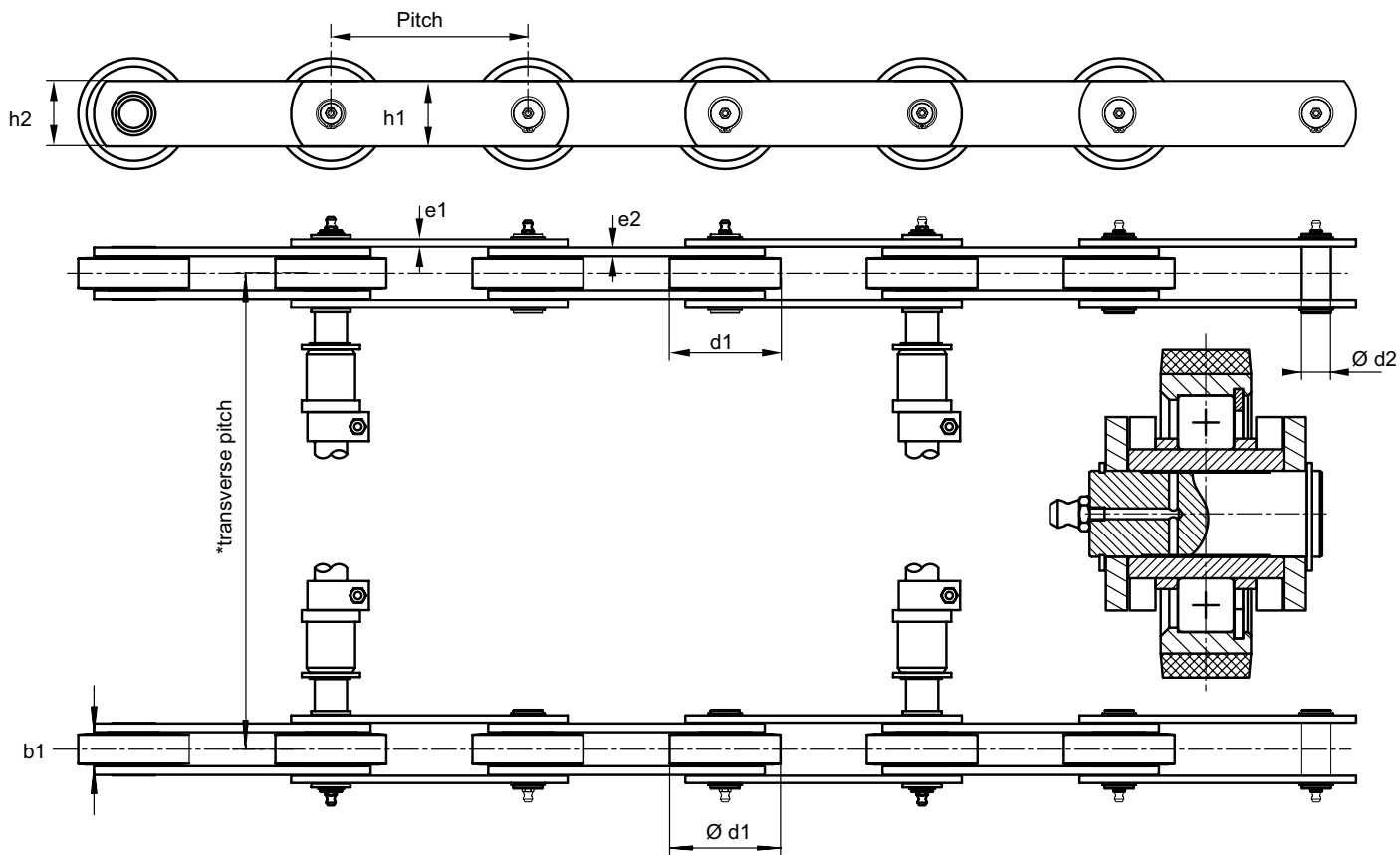


Chains with long extended pins



Chain ref.	Pitch	Roller diameter Ø d1	Inner width b1	Pin diameter Ø d2	Outer plate h1 x e1	Inner plate h2 x e2	Min. breaking load (kN) Rr
6604	100	25,4	25,4	14,6	40 x 6	40 x 6	120
6609	100	25,4	25,4	14,6	40 x 5	40 x 6	230
6617	100	29,21	31	17,78	45 x 6,35	45 x 6,35	180
6727	100,9	40	31,3	24,7	62 x 5,6	62 x 5,6	245
6728	100,9	40	31,3	24,7	52 x 5	62 x 5,6	186
6733	101,1	25,4	25,4	14,6	35 x 5	35 x 6	123
6768	101,15	36	25,4	20	45 x 5	45 x 6	134,4
6726	101,15	36	25,4	20	40 x 5	40 x 6	134,4
6771	101,25	25,4	25,4	14,6	35 x 5	35 x 6	123
6740	101,25	40	25,4	21,13	60 x 6	60 x 6	200
6741	101,25	40	30	21,13	60 x 6	60 x 8	250
6719	101,25	29,21	31	17,78	52 x 6	52 x 6	245
6517	101,25	29,21	31,3	17,78	53 x 6	53 x 7	250
6750	101,25	29,21	31,3	17,78	45 x 5	45 x 6	186
6565	101,25	40	31,3	21,6	45,5 x 5	52 x 6	245
6587	101,25	40	31,3	21,6	45 x 5	52 x 6	250
6579	101,25	40	31,3	21,6	52 x 5	52 x 6	190
6745	101,25	40	31,3	22,85	45 x 5	52 x 6	250
6566	101,25	40	31,3	22,85	52 x 5	52 x 6	180
6724	101,25	40	31,3	24,7	52 x 5	52 x 6	186
6658	101,25	48,26	31,3	29,2	52 x 6	62 x 5,6	250
6675	135	29,21	31,3	17,78	45 x 5	45 x 6,35	186
6725	135	48,26	31,3	31	77 x 5	77 x 6	250
6737	135	39,37	38,1	21,62	62 x 5,6	68 x 6 ou 6,35	200
6738	135	39,37	38,1	21,62	62 x 5,6	68 x 6 ou 6,35	200
6704	135	39,37	48,3	21,6	62 x 5,6	68 x 6	270
6762	135	48,26	48,3	31	62 x 5,6	68 x 6	400
6671	135	48,26	48,3	31	70 x 6	77 x 6	340
6605	135	48,26	48,3	31	77 x 6	80 x 10	560
6767	135	70	66,5	36	99 x 7	100 x 8	437
6672	135	68	72,6	36	99 x 6	99 x 7	496
6599	135	68	72,6	36	99 x 6	99 x 7	690
6633	135	76	72,6	46	99 x 7	100 x 10	760

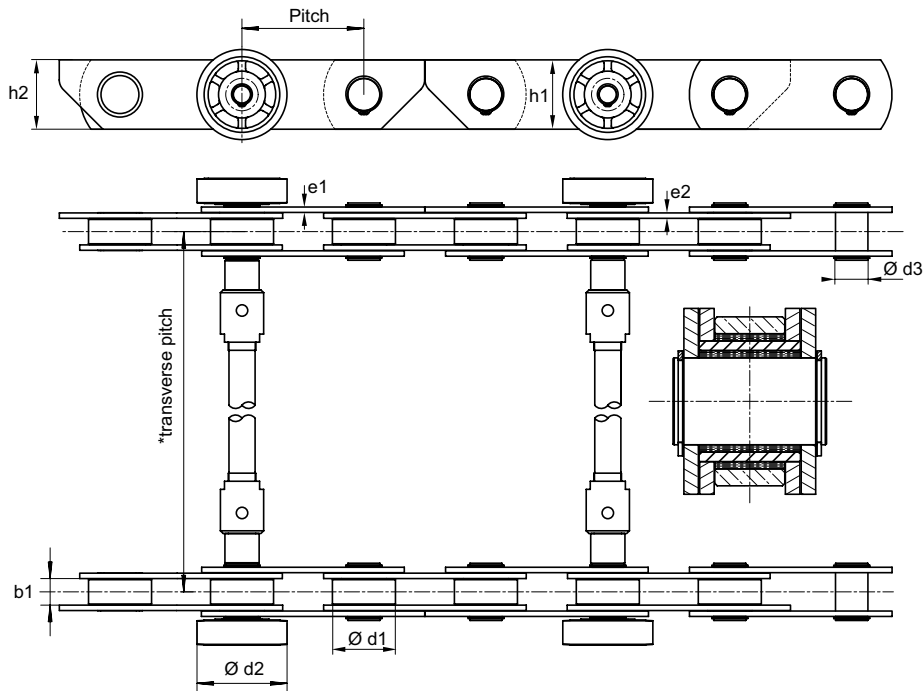
Twin strand plain wheel chains



* The transverse pitch varies depending on escalator type: information required prior to quotation

Chain ref.	Pitch	Wheel diameter $\varnothing d1$	Inner width $b1$	Pin diameter $\varnothing d2$	Outer plate $h1 \times e1$	Inner plate $h2 \times e2$	Min. breaking load (kN) R_r
6732	101,6	55	25	14	35 x 6	35 x 6	80
6731	133,33	76	23	14	40 x 4	40 x 4	130
6722	135	76	23	12,7	35x5	35 x 5	70
6580	135	76	23	14	35 x 3,8	35 x 4,8	79,15
6620	135	76	23	18	40 x 5	45 x 6	170
6619	135	76	23	25	45 x 5	45 x 6	190
6642	135	76	23	25	50 x 5	50 x 6	230
6641	135	95	27	28	62 x 5,6	61 x 7	230
6758	135	76,2	23,4	25	45 x 5	45 x 6	200
6572	135,46	76,2	23,4	15	30 x 5	35 x 5	90
6573	135,46	76,2	23,4	20	40 x 5	45 x 5	150
6736	135,46	76,2	23,4	25	45 x 5	45 x 6	200
6765	135,46	106,2	24	38	68 x 6	68 x 6	225

Twin strand chains with outboard wheels

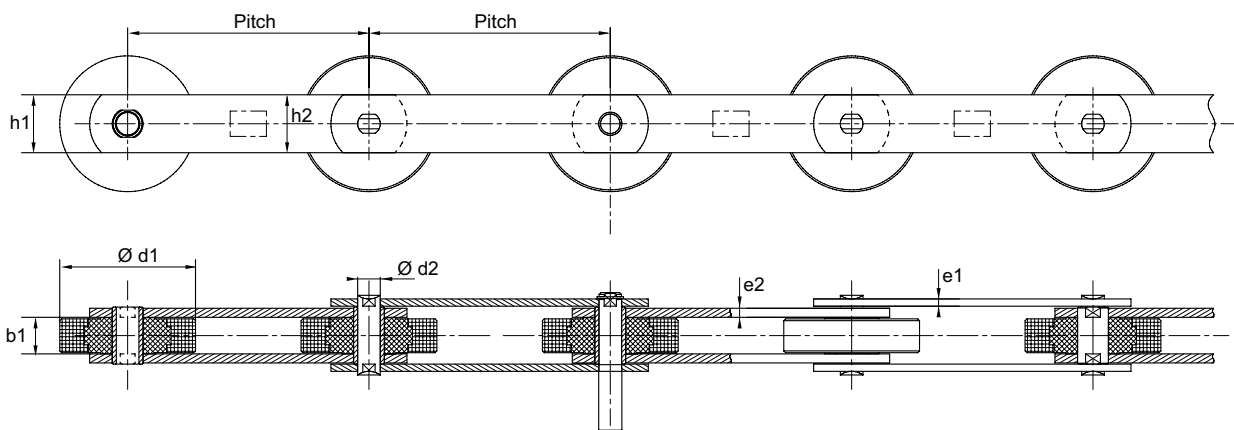


* The transverse pitch varies depending on escalator type: information required prior to quotation

Chain ref.	Pitch	Roller diameter Ø d1	Wheel diameter Ø d2	Inner width b1	Pin diameter Ø d3	Outer plate h1 x e1	Inner plate h2 x e2	Min. breaking load (kN) Rr
6703	135,46	40	100	31,5	20	45 x 5	45 x 5	140
6548	135,46	40	100	31,5	20	45 x 5	45 x 5	200
6701	135,46	70	100	29,5	40	77 x 6	77 x 6	370
6699	135,46	70	100	30	35,9	80 x 6	90 x 6	295
6615	135,46	70	100	48,5	42	99 x 6	99 x 6	596
6710	135,46	70	100	48,5	42	105x6	115 x 6	-
6734	135,46	65,86	-	30,2	33,05	70 x 6	74 x 6	270
6759**	203,2	65,85	100	30,5	30,05	62 x 6	70 x 6	250

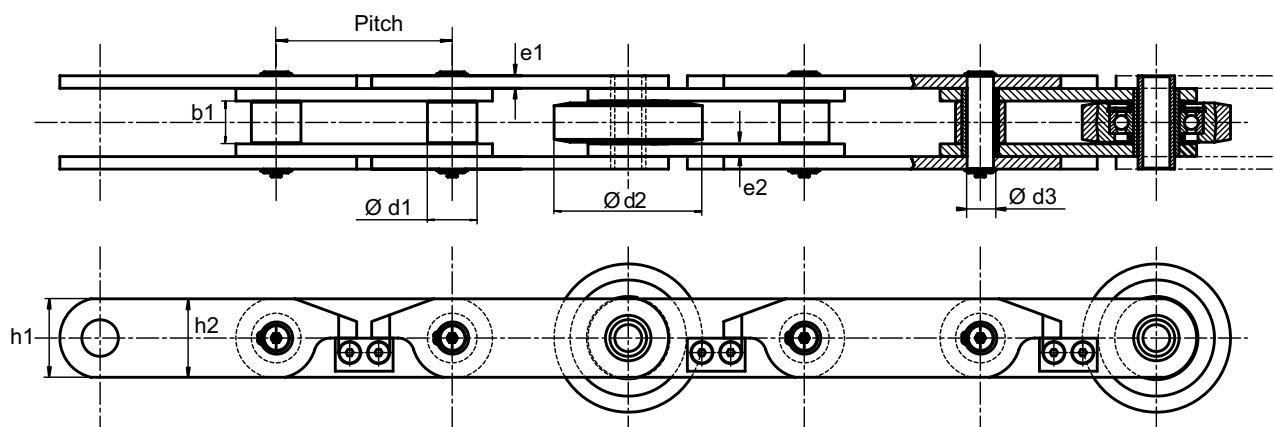
** Chain for Travelators.

Plain wheel chains with short extended pins



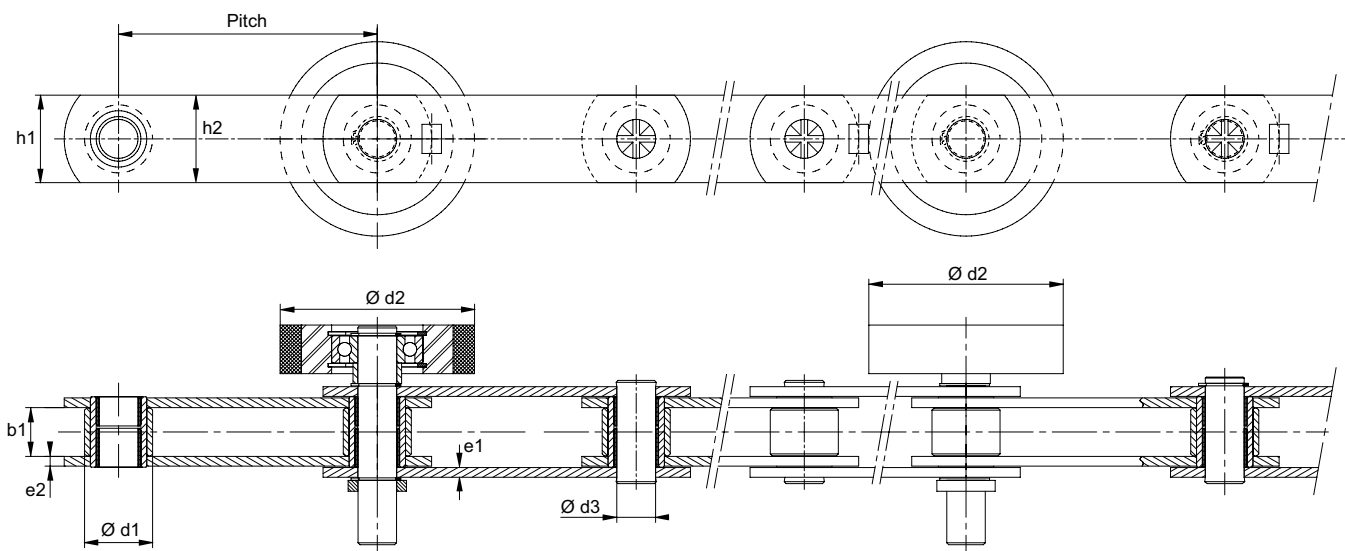
Chain ref.	Pitch	Wheel diameter Ø d1	Inner width b1	Pin diameter Ø d2	Outer plate h1 x e1	Inner plate h2 x e2	Min. breaking load (kN) Rr
6676	133,33	75,1	20,2	12,5	32 x 4	32 x 5	98

Hollow pin chains with tabs



Chain ref.	Pitch	Roller diameter Ø d1	Wheel diameter Ø d2	Inner width b1	Pin diameter Ø d3	Outer plate h1 x e1	Inner plate h2 x e2	Min. breaking load (kN) Rr
6723	135,46	38,1	114	33	20,7	60,33x9,54	60,33x9,54	327
6625	135,46	85,4		33,1	42,67	76 x 9	88 x 9	360
6626	135,46	85,4		33,2	44,27	88 x 6	99 x 6	268
6715	135,46	85,67	-	37,34	50,67	98,4x12,7	114,3x12,7	725
6718	135,46	91,6	-	37,34	50,67	98,4x12,7	114,3x12,7	580

Chains with short extended pins both sides



Chain ref.	Pitch	Roller diameter Ø d1	Wheel diameter Ø d2	Inner width b1	Pin diameter Ø d3	Outer plate h1 x e1	Inner plate h2 x e2	Min. breaking load (kN) Rr
6772	133,33	35	100	25,1	16	40 x 5	40 x 5	90
6709	133,33	35	100	25,1	20	45 x 5	45 x 5	96
6773	133,33	40	100	25,1	22	50 x 5	50 x 6	160
6681	135,46	70	-	42,7	45	99 x 7	99 x 8	526

Consult us for over 300 different models...