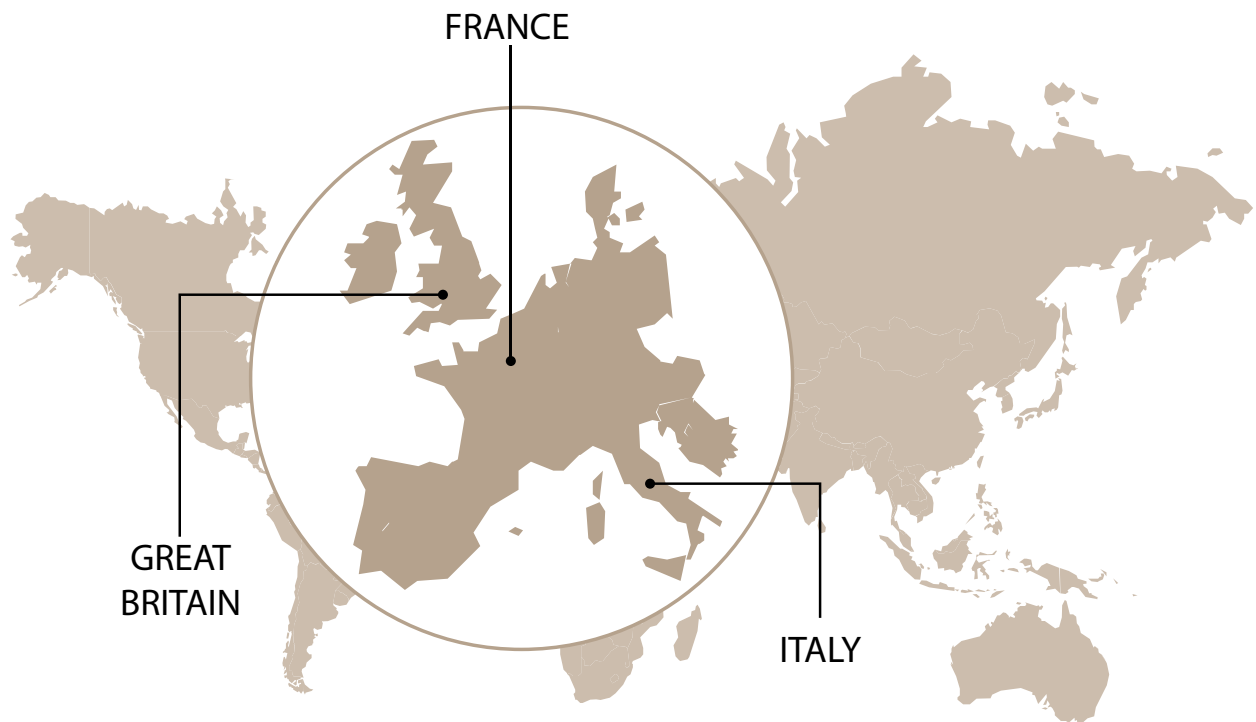


Quality is the key
for increased safety

THEME PARKS

35, rue des Bas-Trévois
BP 104 - 10003 Troyes Cedex - France
Tél : +33 (0)3 25 76 29 50 - Fax : +33 (0)3 25 80 31 62
web : www.sedis.com - e-mail : <https://sedis.com/contact>



Roller Coaster



Bumper boat

Technological advances at the forefront of progress allows long term major clients loyalty

Chessington, Astérix, Reverchon, The London Dungeon, Le Pal, Mirabilandia, Legoland, Gardaland, Thorpe Park, Nigloland...

DELTA® Chains

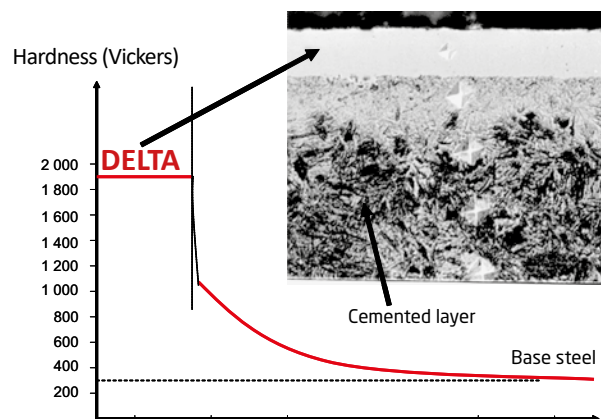
for demanding working conditions



Anti-wear: DELTA® HR

- > In a abrasive environment, high speed, random maintenance
- > Thanks to a SEDIS exclusive thermochemical treatment, DELTA® HR chain links reach extremely high hardnesses of 1800 HV
- > Control of the friction coefficient

Anti-elongation



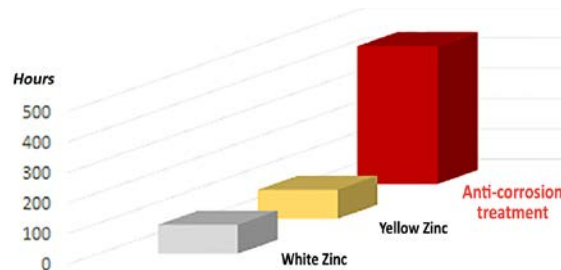
Anti-corrosion: DELTA® Titanium 2

GUARANTEED 100% CHROMIUM 6 FREE TREATMENT

- > An anti-wear and anti-corrosion chain : DELTA® TITANIUM 2
- > High mechanical resistance: no hydrogen embrittlement.
- > Certification: NO HEAVY METALS in conformity with European legislation (directives 2000/53/CE & 2002/95/CE)

Anti-corrosion

Salt mist according to ASTM B117

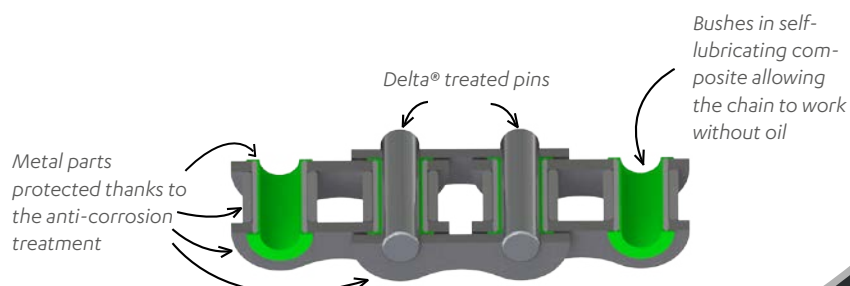


Maintenance-free: DELTA® VERTE®

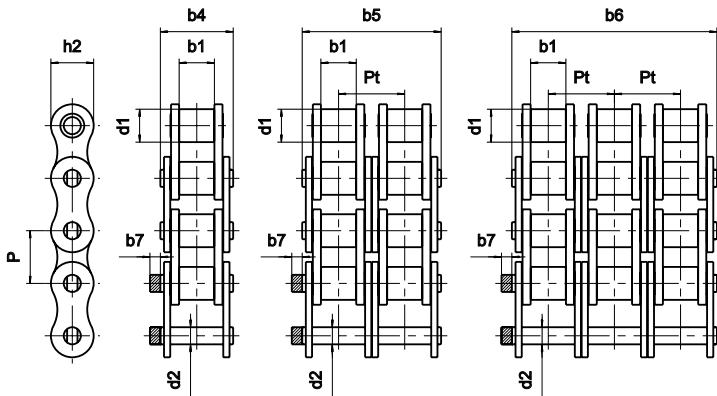
100% ECOLOGICAL

- > No pollution to transported products
- > Eliminated maintenance costs
- > No lubricant
- > Works in water
- > High- and low-temperature applications

Lubrication-free

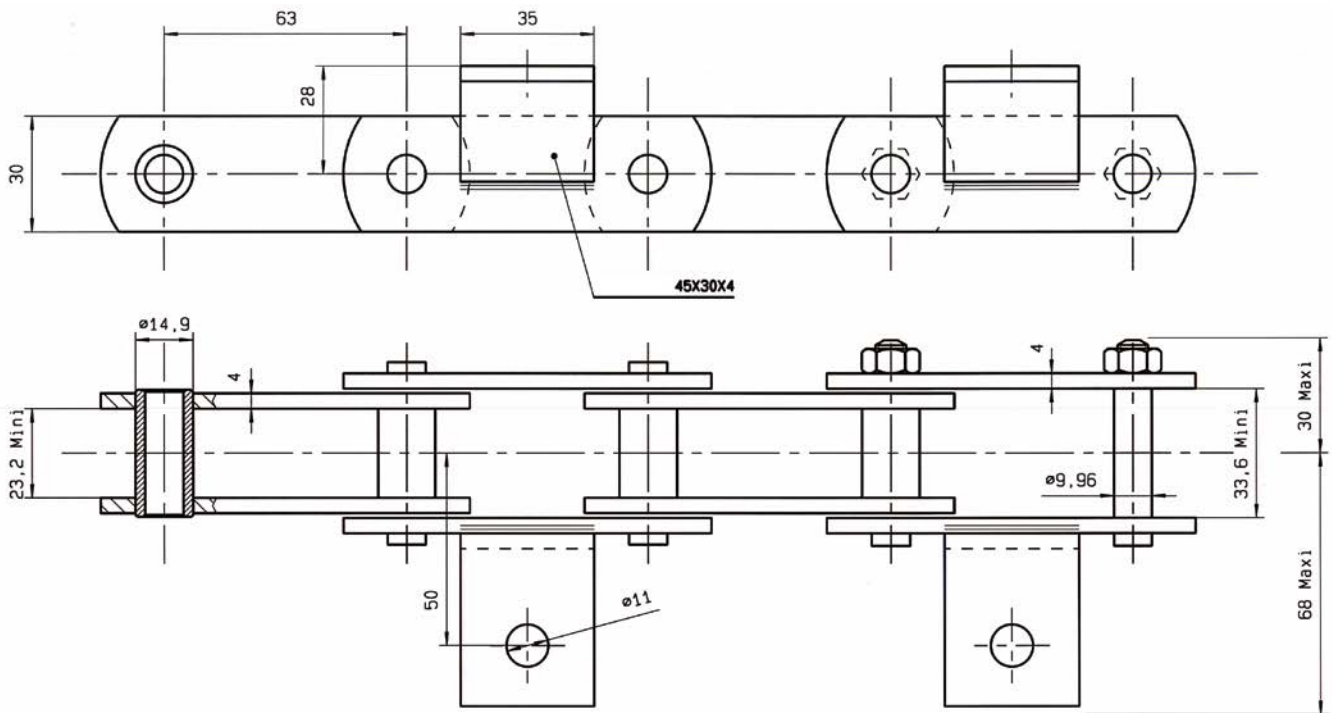


Transmission chains - Delta® HR Range

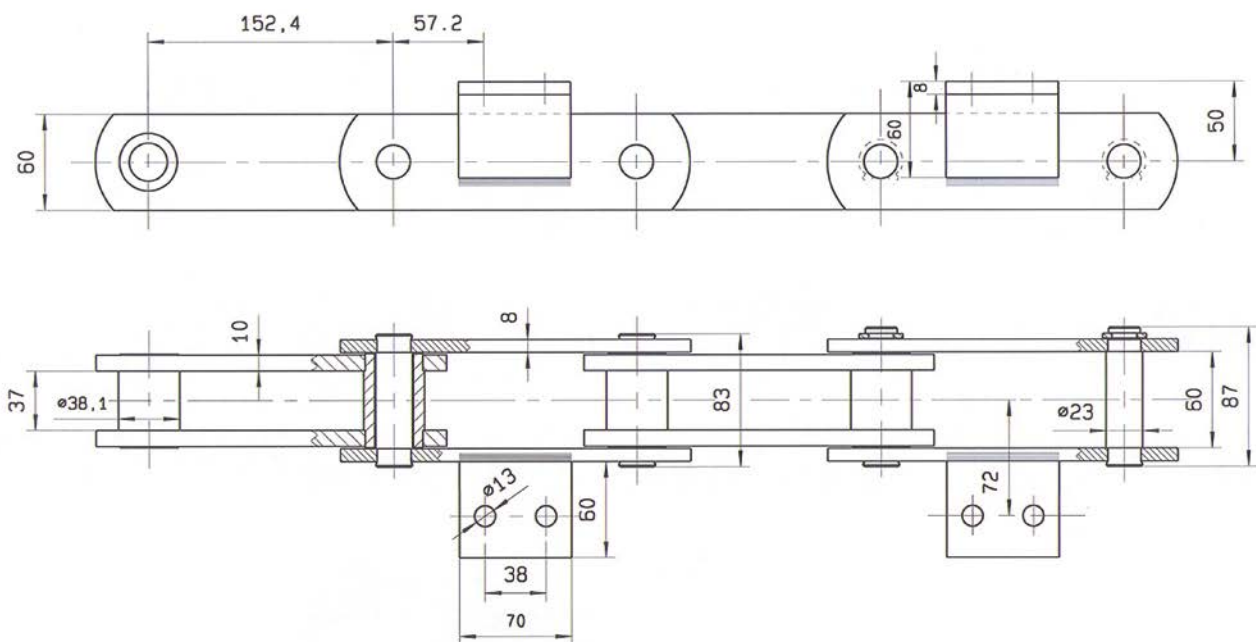


CHAINS		TECHNICAL SPECIFICATIONS (IN MM)									BREAKING LOAD			CONNECTING LINK							
ISO 606	SEDIS chain	pitch (inches)	Pitch (mm)	Ø roller	inner width	Pin length	pin Ø	plate height	transversal pitch	pin extension B7	ISO 606 regulation	min	average	n°200	n°205	n°206	n°208	n°209	n°216	n°217	n°221
		P	d1	b1	b4	d2	h2	Pt													
BS SIMPLEX																					
08B-1	7ND	0,5	12,7	8,51	7,75	16,6	4,45	11,8		1,5	17,8	18,2	20,4	✓	✓	✓				✓	✓
10B-1	11ND	0,625	15,875	10,16	9,65	19	5,08	13,7		1,5	22,2	23	27,2	✓	✓	✓				✓	✓
12B-1	13ND	0,75	19,05	12,07	11,68	22,3	5,72	16,2		1,5	28,9	30,5	34,8	✓	✓	✓				✓	✓
16B-1	15TD	1	25,4	15,88	17,02	35,1	8,28	20,8		3	60	75	87	✓	✓	✓	✓			✓	✓
20B-1	17TD	1,25	31,75	19,05	19,56	40,5	10,19	25,4		6,1	95	110	119	✓	✓	✓	✓	✓		✓	✓
24B-1	18TD	1,5	38,1	25,4	25,4	53,1	14,63	32,3		6,6	160	180	198	✓	✓	✓	✓	✓	✓	✓	✓
28B-1	20TD	1,75	44,45	27,94	30,95	65,1	15,9	37		7,4	200	235	251,5	✓	✓	✓	✓	✓	✓	✓	✓
32B-1	22TD	2	50,8	29,21	30,99	63,6	17,81	42,3		7,9	250	300	321	✓	✓	✓	✓	✓	✓	✓	✓
BS DUPLEX																					
08B-2	207ND	0,5	12,7	8,51	7,75	30,6	4,45	11,8	13,92	1,5	31,1	36,4	40,8	✓	✓	✓				✓	✓
10B-2	211ND	0,625	15,875	10,16	9,65	35,75	5,08	13,7	16,59	1,5	44,5	46	54,4	✓	✓	✓				✓	✓
12B-2	213ND	0,75	19,05	12,07	11,68	41,8	5,72	16,2	19,46	1,5	57,8	61	69,5	✓	✓	✓				✓	✓
16B-2	215TD	1	25,4	15,88	17,02	68	8,28	20,8	31,88	3	106	150	174	✓	✓	✓	✓			✓	✓
20B-2	217TD	1,25	31,75	19,05	19,56	77	10,19	25,4	36,45	6,1	170	220	239,8	✓	✓	✓	✓	✓		✓	✓
24B-2	218TD	1,5	38,1	25,4	25,4	101,8	14,63	32,3	48,36	6,6	280	360	396	✓	✓	✓	✓	✓	✓	✓	✓
28B-2	220TD	1,75	44,45	27,94	30,95	124,7	15,9	37	59,56	7,4	360	470	502,9	✓	✓	✓	✓	✓	✓	✓	✓
32B-2	222TD	2	50,8	29,21	30,99	122,8	17,81	42,3	58,55	7,9	450	600	642	✓	✓	✓	✓	✓	✓	✓	✓
BS TRIPLEX																					
09B-3	307ND	0,5	12,7	8,51	7,75	44,6	4,45	11,8	13,92	1,5	44,5	54,6	61,2	✓	✓	✓				✓	✓
10B-3	311ND	0,625	15,875	10,16	9,65	52,3	5,08	13,7	16,59	1,5	66,7	69	81,6	✓	✓	✓				✓	✓
12B-3	313ND	0,75	19,05	12,07	11,68	61,4	5,72	16,2	19,46	1,5	86,7	91,5	104,3	✓	✓	✓				✓	✓
16B-3	315TD	1	25,4	15,88	17,02	99,9	8,28	20,8	31,88	3	160	225	261	✓	✓	✓	✓			✓	✓
20B-3	317TD	1,25	31,75	19,05	19,56	113,5	10,19	25,4	36,45	6,1	250	330	359,7	✓	✓	✓	✓	✓		✓	✓
24B-3	318TD	1,5	38,1	25,4	25,4	150,2	14,63	32,3	48,36	6,6	425	540	594	✓	✓	✓	✓	✓	✓	✓	✓
28B-3	320TD	1,75	44,45	27,94	30,95	184,6	15,9	37	59,56	7,4	530	705	754,4	✓	✓	✓	✓	✓	✓	✓	✓
32B-3	322TD	2	50,8	29,21	30,99	181,7	17,81	42,3	58,55	7,9	670	900	963	✓	✓	✓	✓	✓	✓	✓	✓
ANSI SIMPLEX																					
08A-1	40-1	0,5	12,7	7,93	7,85	16,3	3,98	11,5		1,5	13,9	18		✓	✓	✓	✓			✓	✓
10A-1	50-1	0,625	15,875	10,15	9,55	20,45	5,09	13,7		1,5	21,8	28		✓	✓	✓	✓			✓	✓
12A-1	60-1	0,75	19,05	11,91	12,65	25,4	5,96	16,2		4	31,3	38		✓	✓	✓	✓			✓	✓
16A-1	80-1	1	25,4	15,88	15,87	32,8	7,94	20,8		4	55,6	62		✓	✓	✓	✓			✓	✓
20A-1	100-1	1,25	31,75	19,05	19,05	39,6	9,53	25,4		6,1	87	99		✓	✓	✓	✓			✓	✓
24A-1	120-1	1,5	38,1	22,22	25,4	49,6	11,10	35,2		6,6	125	140		✓	✓	✓	✓			✓	✓
28A-1	140-1	1,75	44,45	25,4	25,4	53,5	12,7	42		7	170	178		✓	✓	✓	✓			✓	✓
32A-1	160-1	2	50,8	28,58	31,75	64	14,27	48,2		7	223	228		✓	✓	✓	✓			✓	✓
ANSI DUPLEX																					
08A-2	40-2	0,5	12,7	7,93	7,85	30,8	3,98	11,5	14,38	1,5	27,8	36		✓	✓	✓				✓	✓
10A-2	50-2	0,625	15,875	10,15	9,55	38,9	5,09	13,7	18,1	1,5	43,6	56		✓	✓	✓				✓	✓
12A-2	60-2	0,75	19,05	11,91	12,65	48,3	5,96	16,2	22,78	4	62,3	76		✓	✓	✓	✓			✓	✓
16A-2	80-2	1	25,4	15,88	15,87	62,3	7,94	20,8	29,29	4	111,2	124		✓	✓	✓	✓			✓	✓
20A-2	100-2	1,25	31,75	19,05	19,05	75,5	9,53	25,4	35,76	6,1	174	198		✓	✓	✓	✓			✓	✓
24A-2	120-2	1,5	38,1	22,22	25,4	95,3	11,1	35,2	45,44	6,6	250	280		✓	✓	✓	✓			✓	✓
28A-2	140-2	1,75	44,45	25,4	25,4	102,6	12,7	42	48,87	7	340	356		✓	✓	✓	✓			✓	✓
32A-2	160-2	2	50,8	28,58	31,75	123	14,27	48,2	58,55	7	446	456		✓	✓	✓	✓			✓	✓
ANSI TRIPLEX																					
08A-3	40-3	0,5	12,7	7,93	7,85	45,3	3,98	11,5	14,38	1,5	41,7	54		✓	✓	✓				✓	✓
10A-3	50-3	0,625	15,875	10,15	9,55	57	5,09	13,7	18,1	1,5	65,4	84		✓	✓	✓				✓	✓
12A-3	60-3	0,75	19,05	11,91	12,65	71,1	5,96	16,2	22,78	4	93,4	114		✓	✓	✓				✓	✓
16A-3	80-3	1	25,4	15,88	15,87	91,8	7,94	20,8	29,29	4	166,8	186		✓	✓	✓	✓			✓	✓
20A-3	100-3	1,25	31,75	19,05	19,05	112,1	9,53	25,4	35,76	6,1	261	297		✓	✓	✓	✓			✓	✓
24A-3	120-3	1,5	38,1	22,22	25,4	140,9	11,1	35,2	45,44	6,6	375	420		✓	✓	✓	✓			✓	✓
28A-3	140-3	1,75	44,45	25,4	25,4	152,4	12,7	42	48,87	7	510	534		✓	✓	✓	✓			✓	✓
32A-3	160-3	2	50,8	28,58	31,75	182	14,27	48,2	58,55	7	669	684		✓	✓	✓	✓			✓	✓

Bush chains

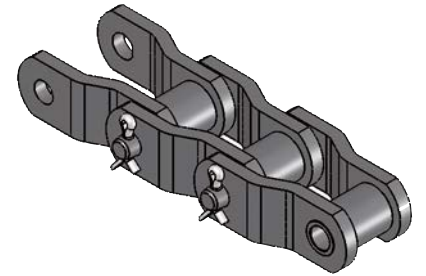
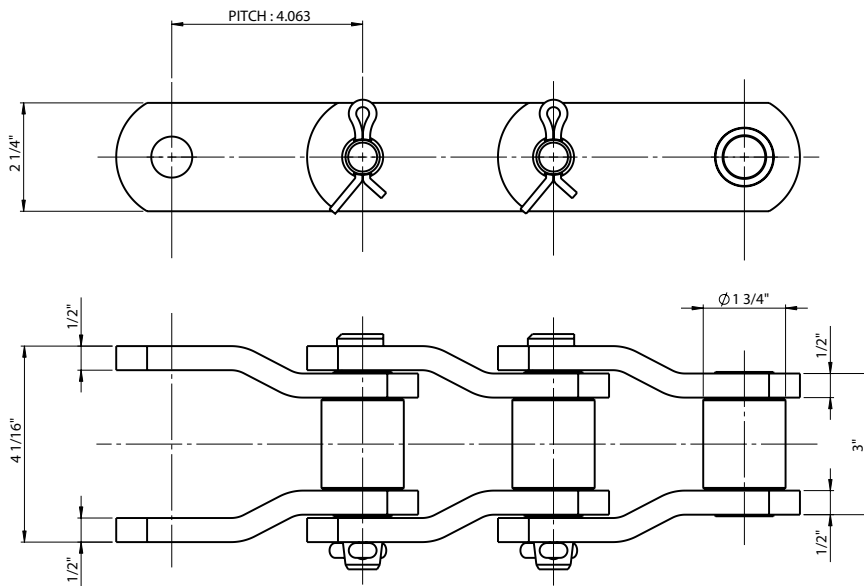


Chain N°	Pitch (mm)	minimum breaking load (KN)	Plate height (mm)	Inner & outer plate thickness (mm)	Bush diameter (mm)	Inner width (mm)	Overall width (mm)
5325-61	63	56	30	4	14,9	23,2	53,5



Chain N°	Pitch (inches)	Pitch (mm)	minimum breaking load (KN)	Plate height (mm)	Inner & outer plate thickness (mm)	Bush diameter (mm)	Inner width (mm)	Overall width (mm)
5617-93	6	152,4	300	60	8 & 10	38,10	37	87

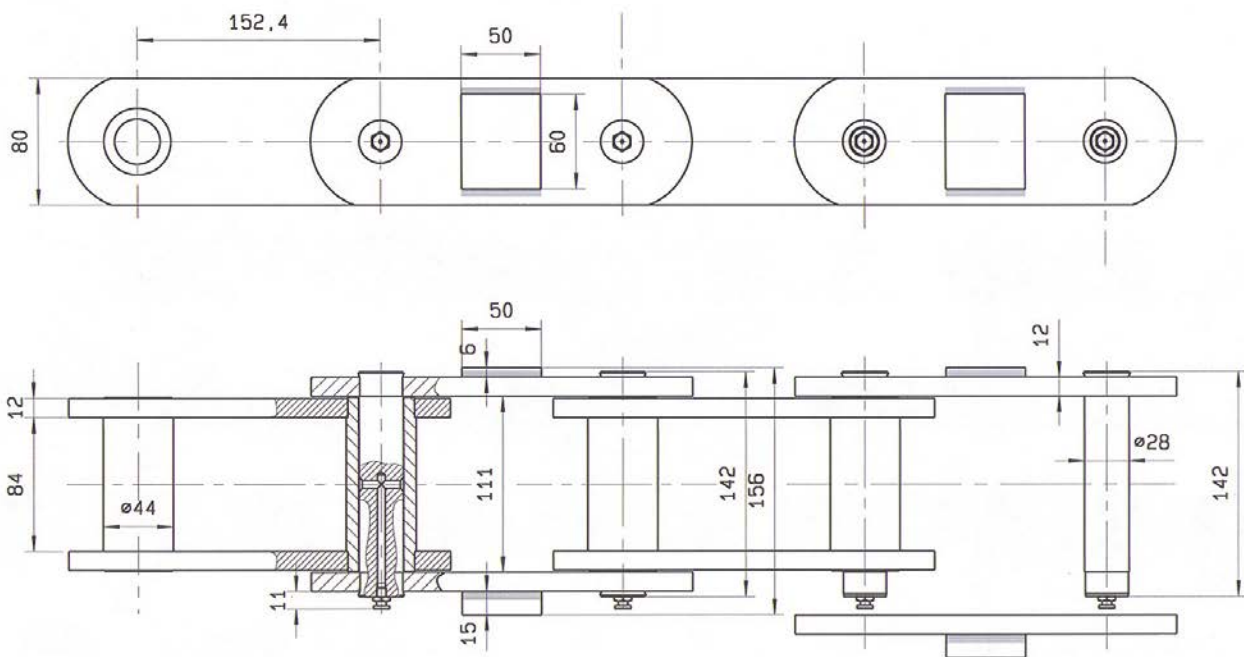
Crank link chains



Note : dimensions in inches

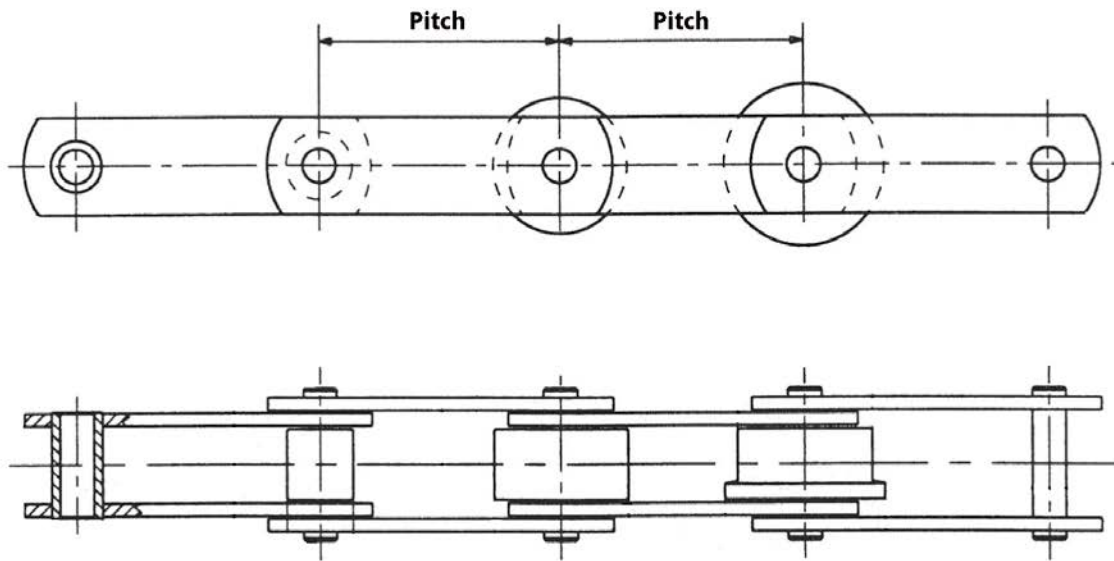
Chain N°	Pitch (inches)	Pitch (mm)	minimum breaking load (KN)	Plate height (mm)	Inner & outer plate thickness (mm)	Roller diameter (mm)	Inner width (mm)	Overall width (mm)
API4	4,063	103,2	667	57,15	12,7	44,45	50,8	111,92

Chains with axial (grease nipple) lubrication



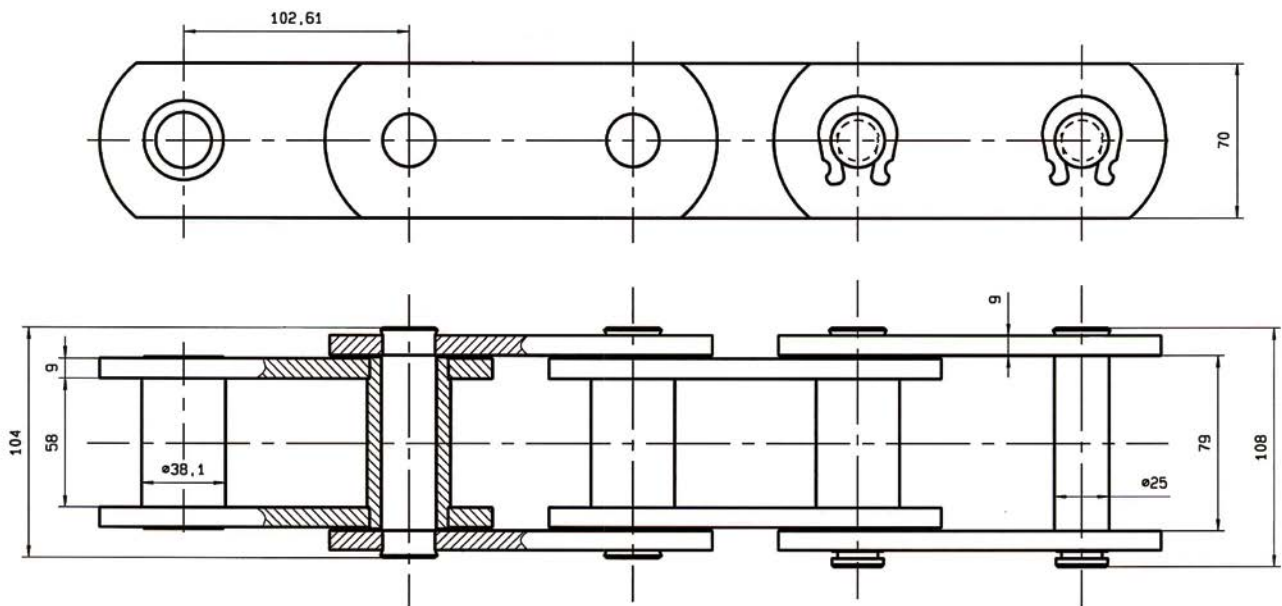
Chain N°	Pitch (inches)	Pitch (mm)	minimum breaking load (KN)	Plate height (mm)	Inner & outer plate thickness (mm)	Bush diameter (mm)	Inner width (mm)	Overall width (mm)
5977-07	6	152,4	600	80	12&15	44	84	156

Roller chain with solid pins

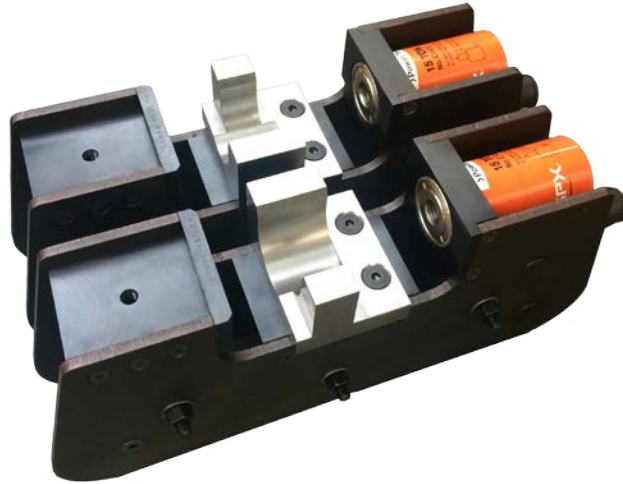


chain N°	Pitch (mm)	minimum breaking load (KN)	Plate height (mm)	Inner & outer plate thickness (mm)	Roller diameter (mm)	Inner width (mm)	Overall width (mm)
M56S80	80	56	30	4	42	23,2	47,4
M112S100	100	112	40	5&6	60	31	62

Bush chains



Chain N°	Pitch (inches)	Pitch (mm)	minimum breaking load (KN)	Plate height (mm)	Inner & outer plate thickness (mm)	Bush diameter (mm)	Inner width (mm)	Overall width (mm)
5903-01	4,04	102,61	336	70	9	38,1	58	108

Tools for assembly and disassembly

For clients who do not wish to use connecting links, we can provide this assembly and disassembly tool which enables our chain to be riveted safely.

Wheels - Sprockets - taper bushes**Automatic GR lubrication system**