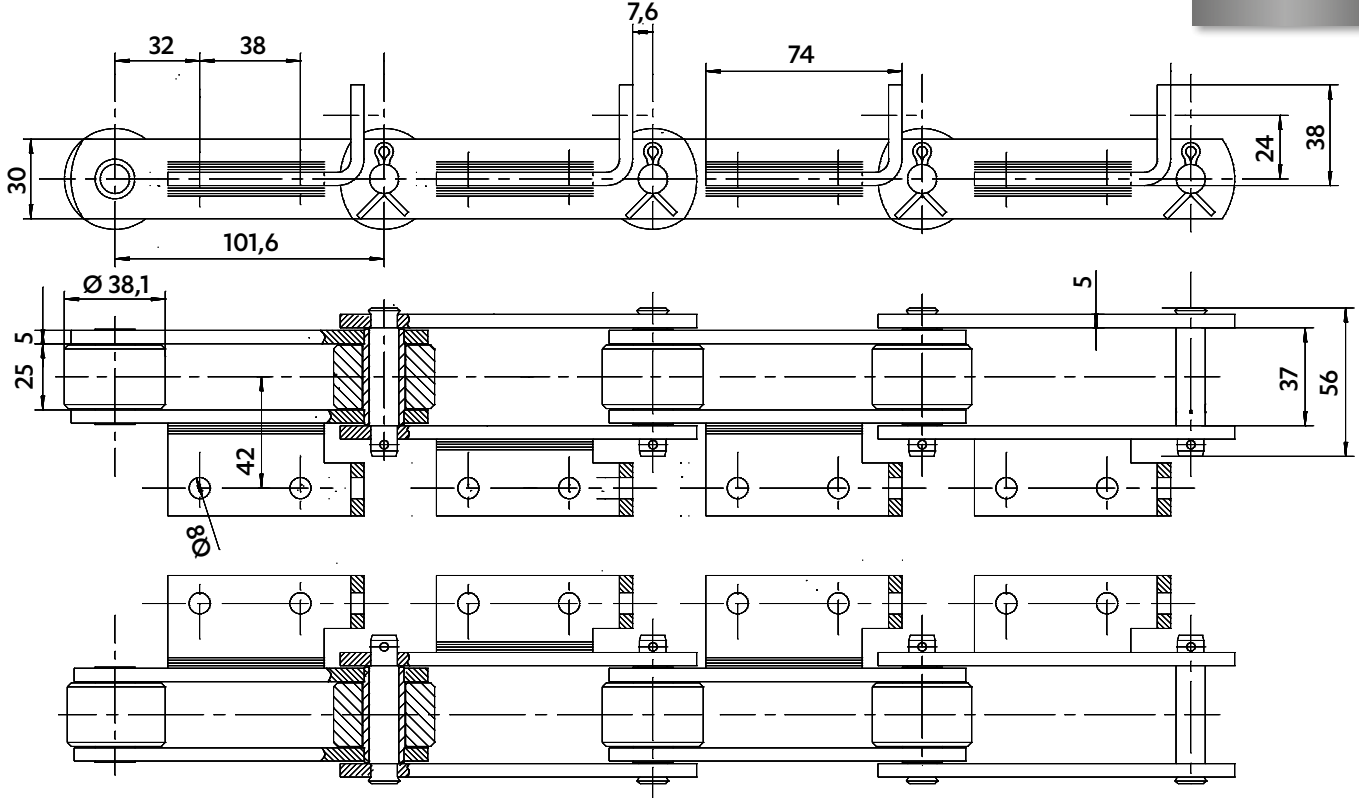


Dimensions in mm

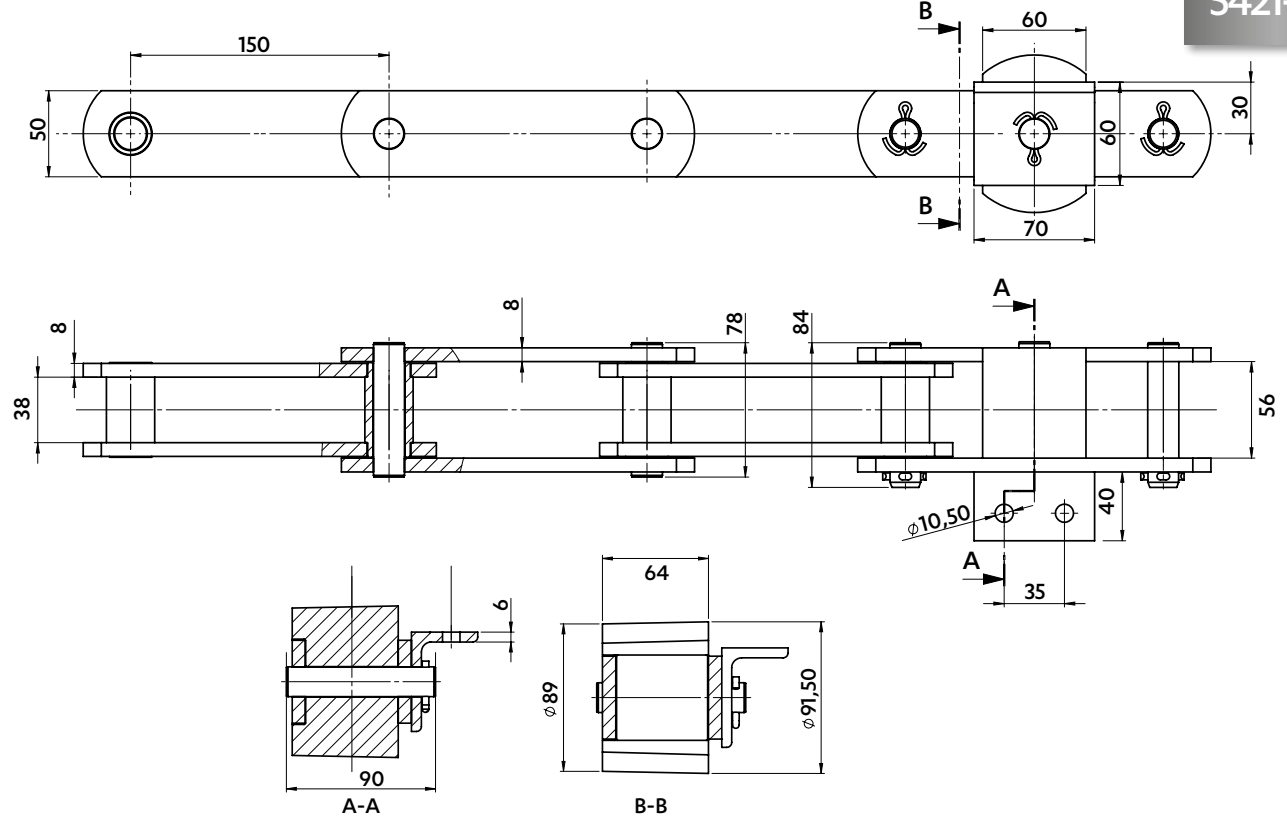
CHAIN FOR POTATOES PROCESSING

5390-31



CHAIN FOR CHICORY CONVEYOR

5421-30

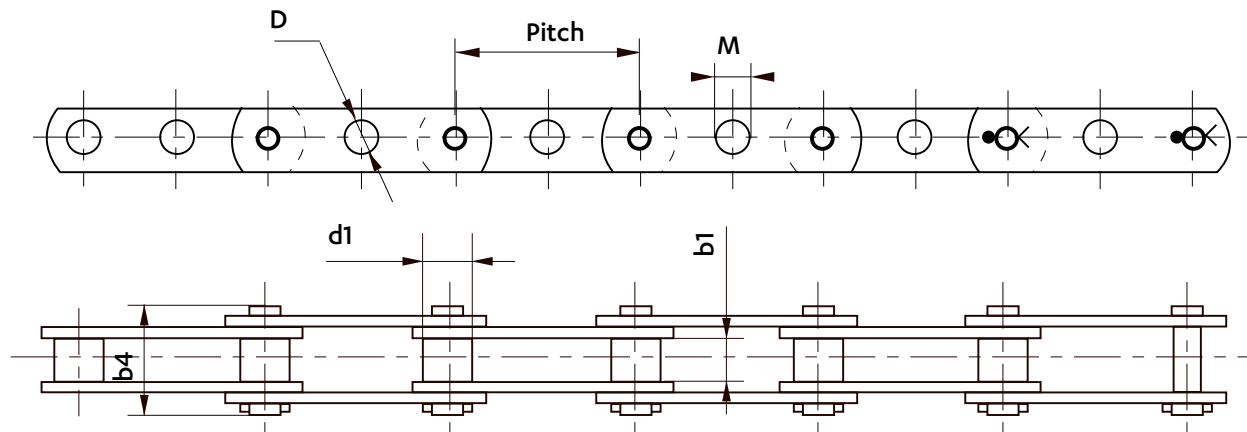


CHAINS FOR FRUITS AND VEGETABLES



Dimensions in mm

CHAINS FOR FRUIT SORTING / GRADING



TYPE A: Cylindrical central hole in each plate.

TYPE B: Cylindrical central hole in each plate except every 3 pitches on one side of the chain where the hole is flattened.

TYPE C: Cylindrical central hole in each plate on one side of the chain and flattened central hole on the other side.

Type	Chain ref	Pitch	Width between inner plates		Wheel Ø	Width over riveted pins		Central hole	
			b1 max.	d1 min.	b4 max.	D max.	M max.		
A	5613-25 ♦	38,1	12,5	11,91	12,07	29	8,1		
	5613-20 ♦	44,45					8,1		
	5342-80	50					8,1		
	5342-76	50	11,7			27	8,1		
	5464-04	50	8,4						
	5708-01	56,25	8,1						
	5464-34	50	DELTA version of 5342-76						
B	5464-05	50	11,7	12,07	27	8,4	6,6		
C	5464-06	50							

♦ Chains in DELTA TITANIUM 2 (anti-corrosion)



SEDIS solutions

POSSIBLE OPTIONS

DELTA® PINS

- Enhanced wear resistance in abrasive environment

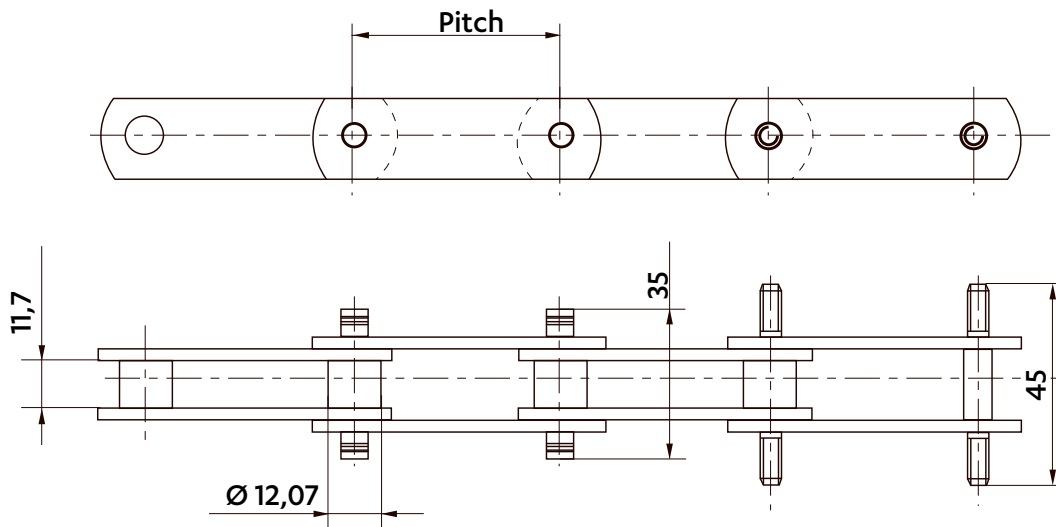
SEDIS ANTI-CORROSION COATING

- Corrosion resistance in harsh environment

Further information on pages 19 to 21

Dimensions in mm

CHAINS FOR FRUIT SORTING / GRADING



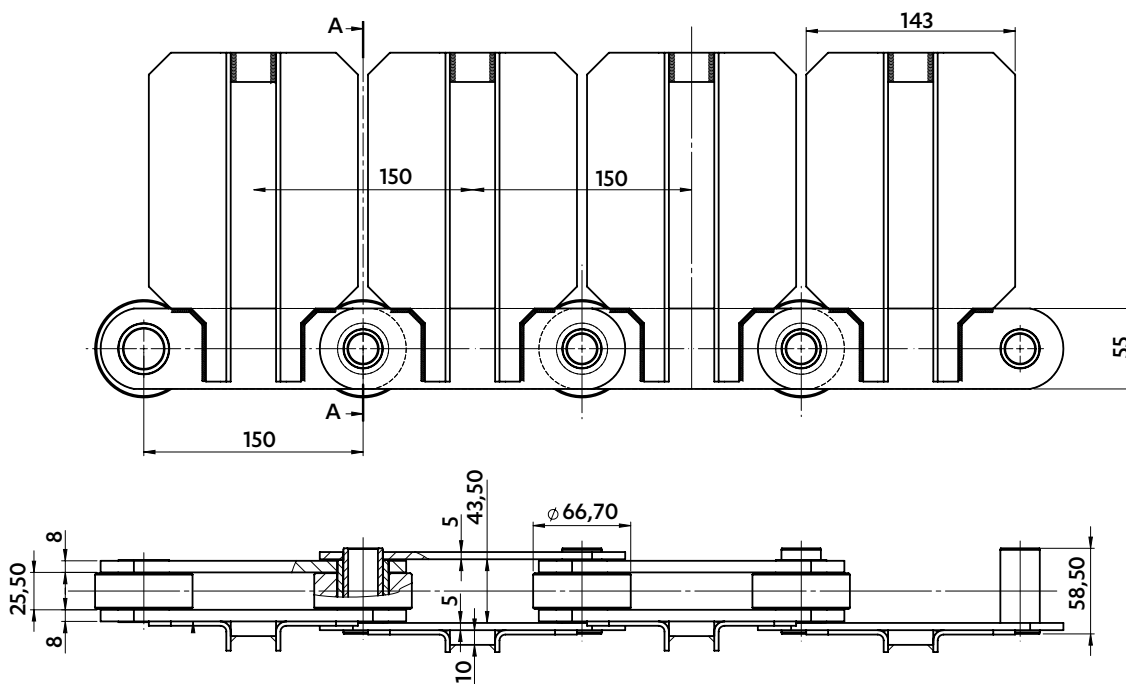
5564-07

Pitch : 50 mm
Breaking load : 20 kN

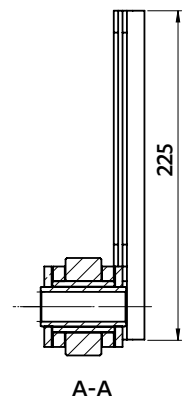
5708-02

Pitch : 56,25 mm
Breaking load : 20 kN

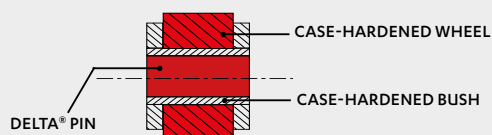
CHAIN FOR ROOTS GRADING



5421-61



DELTA® HOLLOW PINS CASE-HARDENED BUSHES & WHEELS



- Enhanced wear resistance in abrasive environment
- Longer service life of the chain

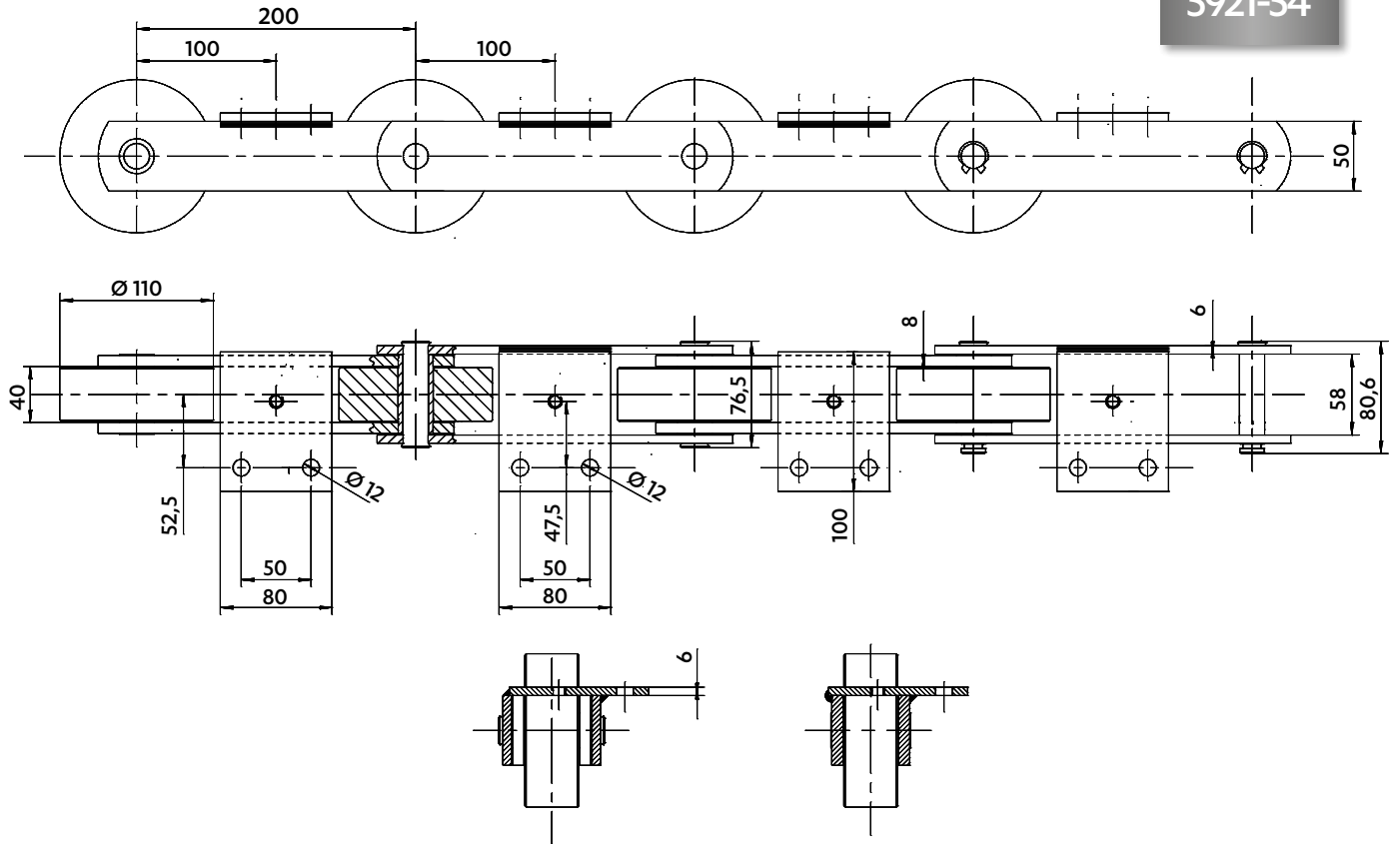


CHAINS FOR BAKERY

Dimensions in mm

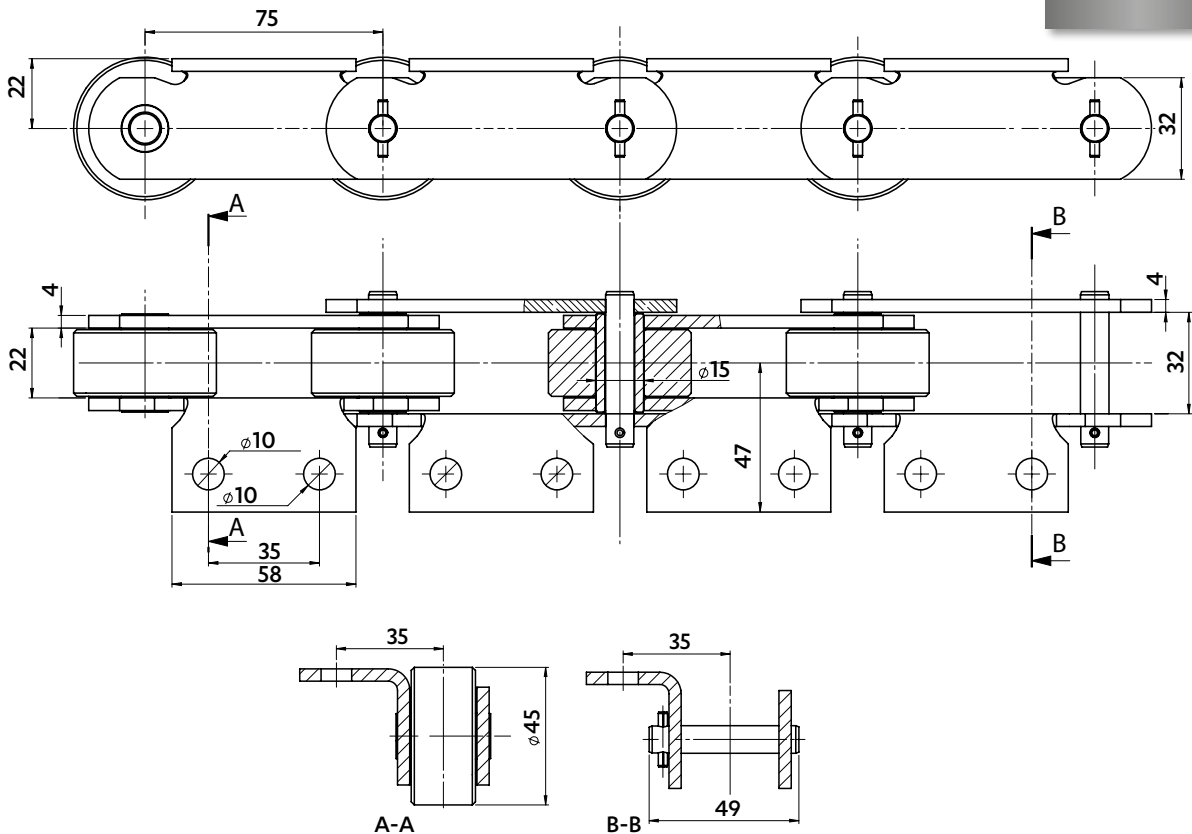
CHAIN FOR BREAD OVEN

5921-54



CHAIN FOR PANCAKES OVEN

5456-36

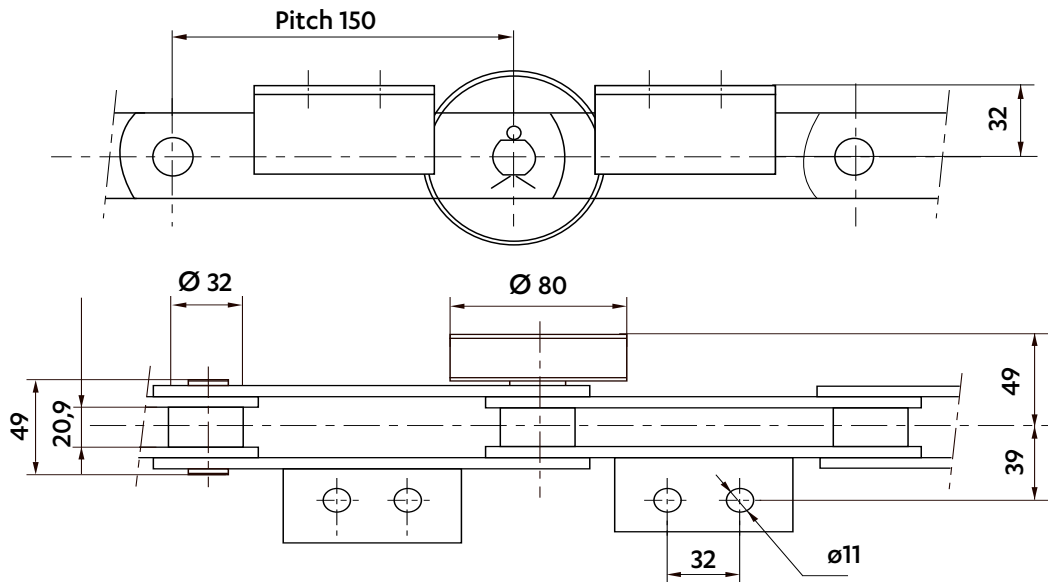


Dimensions in mm

CHAIN FOR STERILIZER

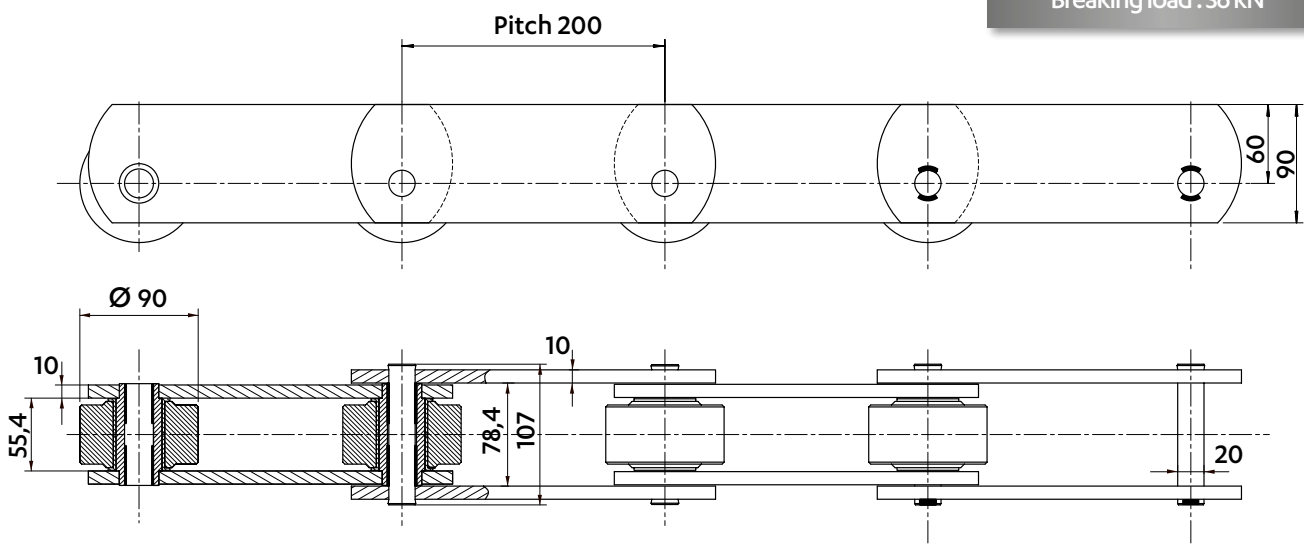
Chain with extended pins on one side equipped with outboard rollers fitted with ball bearings.

5566-15
Breaking load : 68 kN

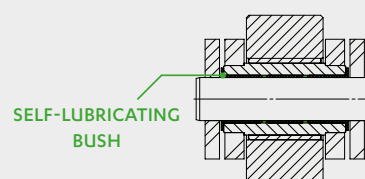


CHAIN FOR CHEESE CONVEYOR

5308-98
Breaking load : 36 kN



STAINLESS STEEL CHAIN DELTA VERTE®



- Corrosion resistance in harsh environment
- Enhanced wear resistance
- No contamination by lubrication oil
- Prevents maintenance

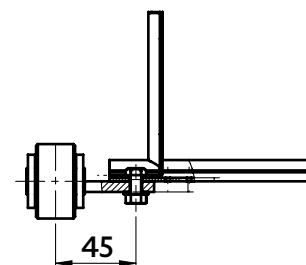
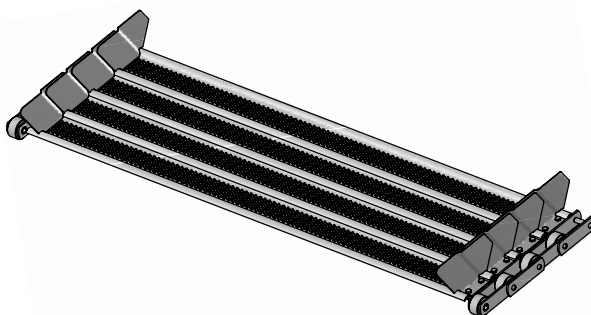
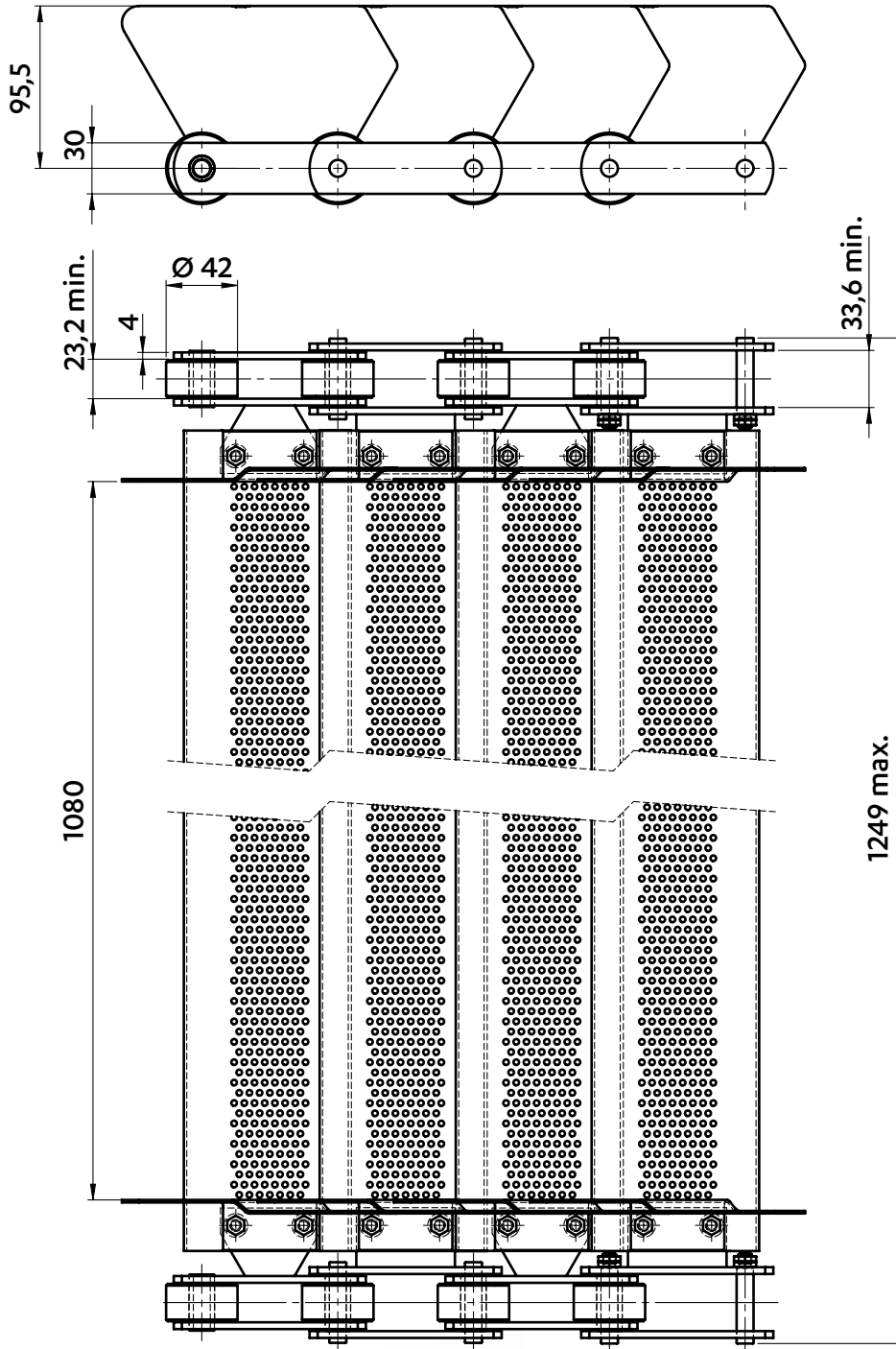
CHAINS FOR ANIMAL FEED



Dimensions in mm

DRYER APRON FOR FOOD MIXTURE

5369-46

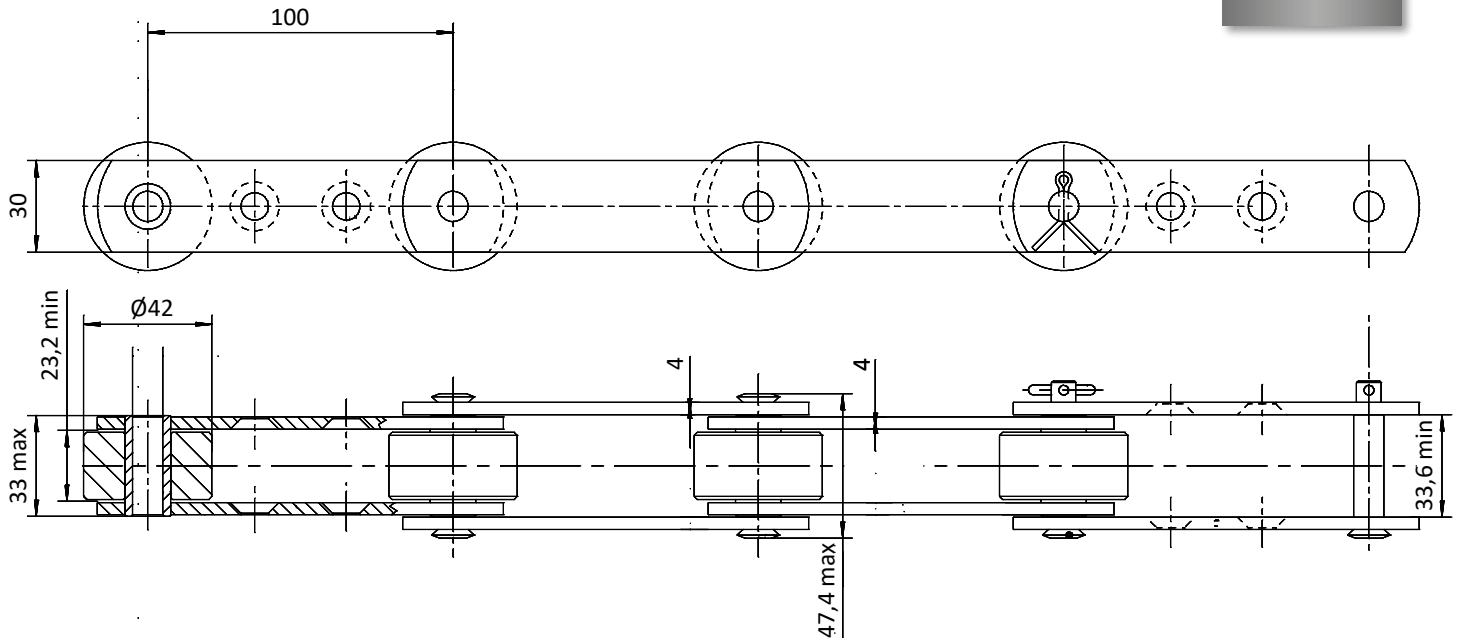




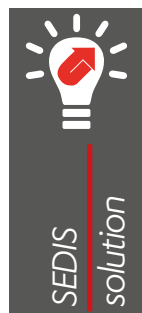
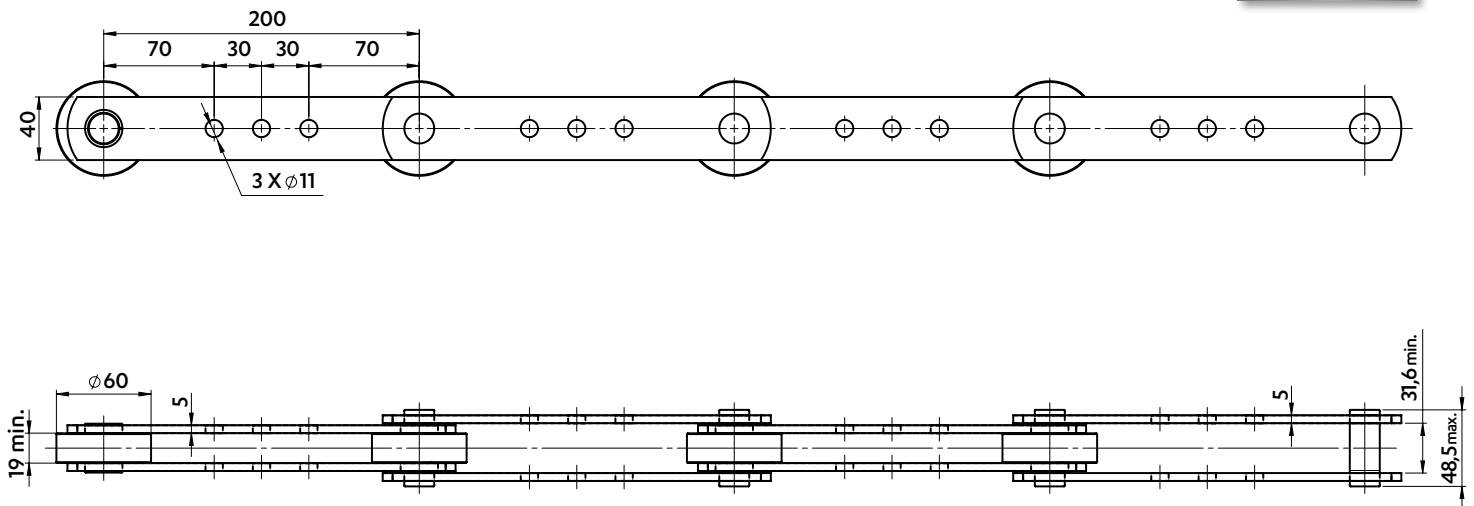
Dimensions in mm

CHAINS FOR ANIMAL FEED

5827-04



5565-26



**DELTA® PINS
ZINC PLATED PLATES &
CASE-HARDENED WHEELS**

- Enhanced wear resistance in abrasive environment
- Corrosion resistance in harsh environment
- Longer service life of the chain

CHAINS FOR ABATTOIRS

Dimensions in mm

MULTIDIRECTIONAL CHAINS

2 TYPES:

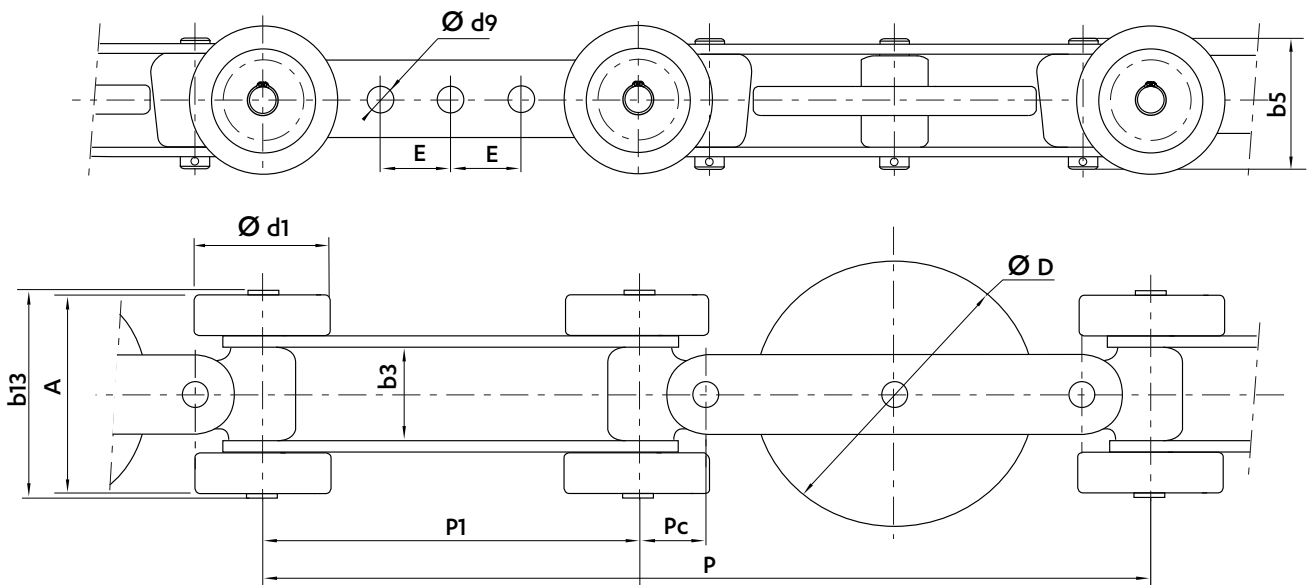
- MAG3
- MAG5

2 VERSIONS:

- Zinc plated bichromated & lubricated
- DELTA® VERTE® : maintenance-free



- Universal joints in forged steel with oil reservoir (except for the DELTA® VERTE® version of MAG 3)
- Directional wheels fitted on a treated steel ring (standard version) or a composite ring (DELTA® VERTE® version)
- Case-hardened directional wheel pin (standard version) or DELTA® pin (DELTA® VERTE® version)
- Ball bearing wheels

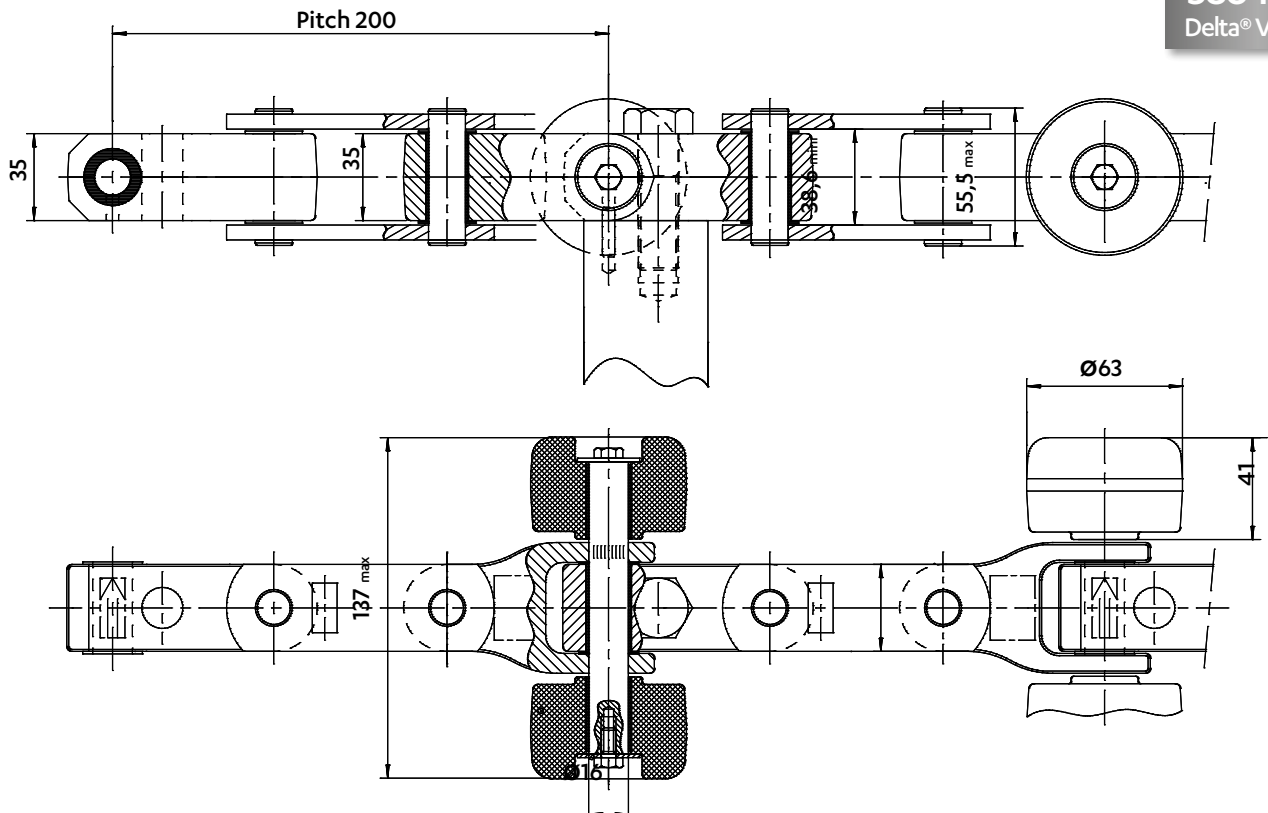


Chain ref	REFERENCES		PITCH			Width between plates b3	PLATES		PINS			WHEELS		Min. breaking load		
	Standard	DELTA® VERTE®	Composed pitch (Pc + P1 x 2) P	Universal joint Pc	Outer plates P1		Hole Ø d9	Holes center distance E	Width over the pins riveted on one side and cottered on the other side		Extended length b13	Width over ball wheels A	directional wheel Ø D	Ball bearing wheels Ø d1	Standard	DELTA® VERTE®
									Standard	DELTA® VERTE®						
MAG 3	5695-01	5695-06	283	21,5	120	31,5/33	9	22,5	46	48,5	69,5	67,5	90	47	35	
MAG 5	5681-01	-	355	27,5	150	39,2	12	30	58		86,5	83,5	110	52	80	

Dimensions in mm

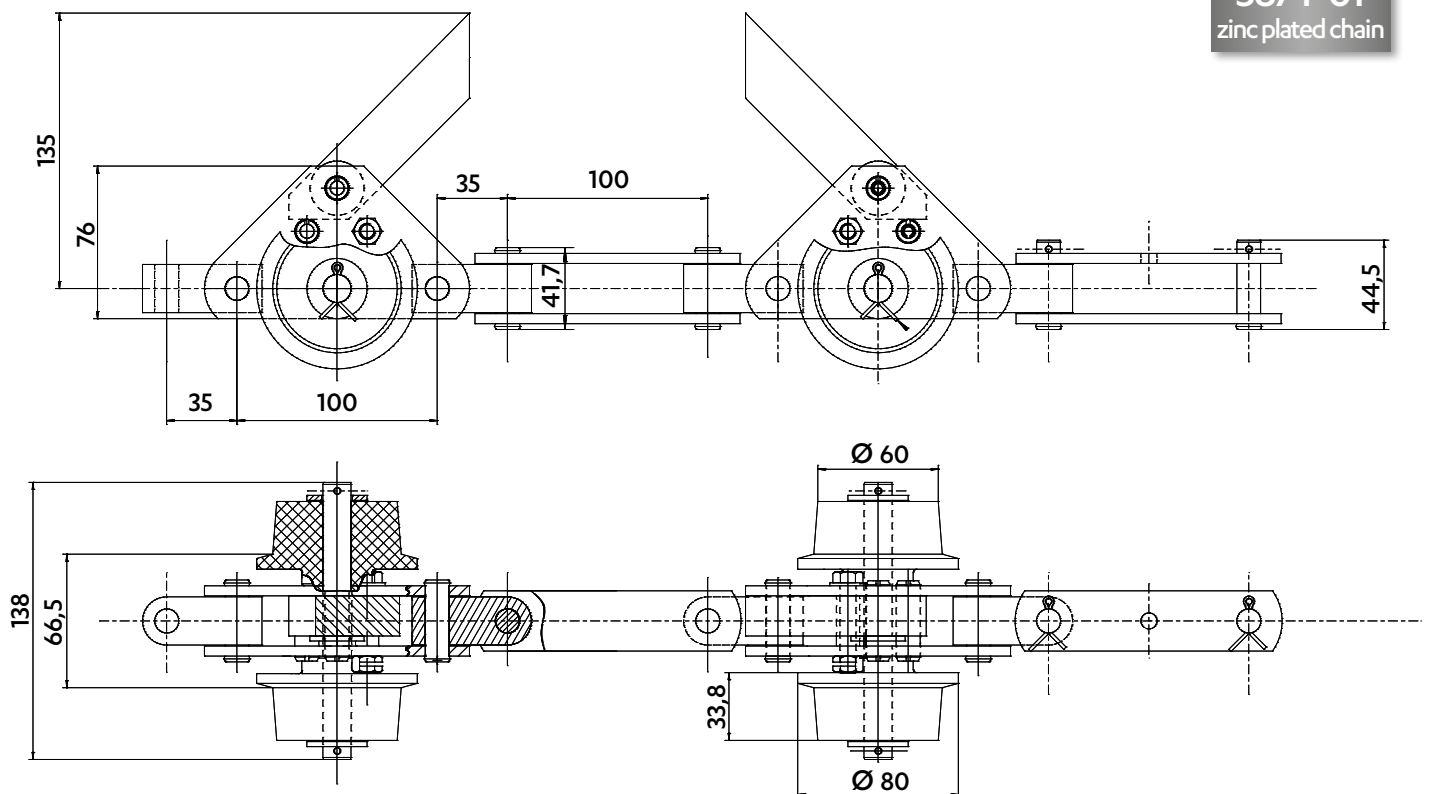
MULTIDIRECTIONAL CHAINS - DELTA VERTE® BI-PLANAR CHAIN

5864-01
Delta® Verte®



MULTIDIRECTIONAL CHAINS - BI-PLANAR CHAIN

5874-01
zinc plated chain

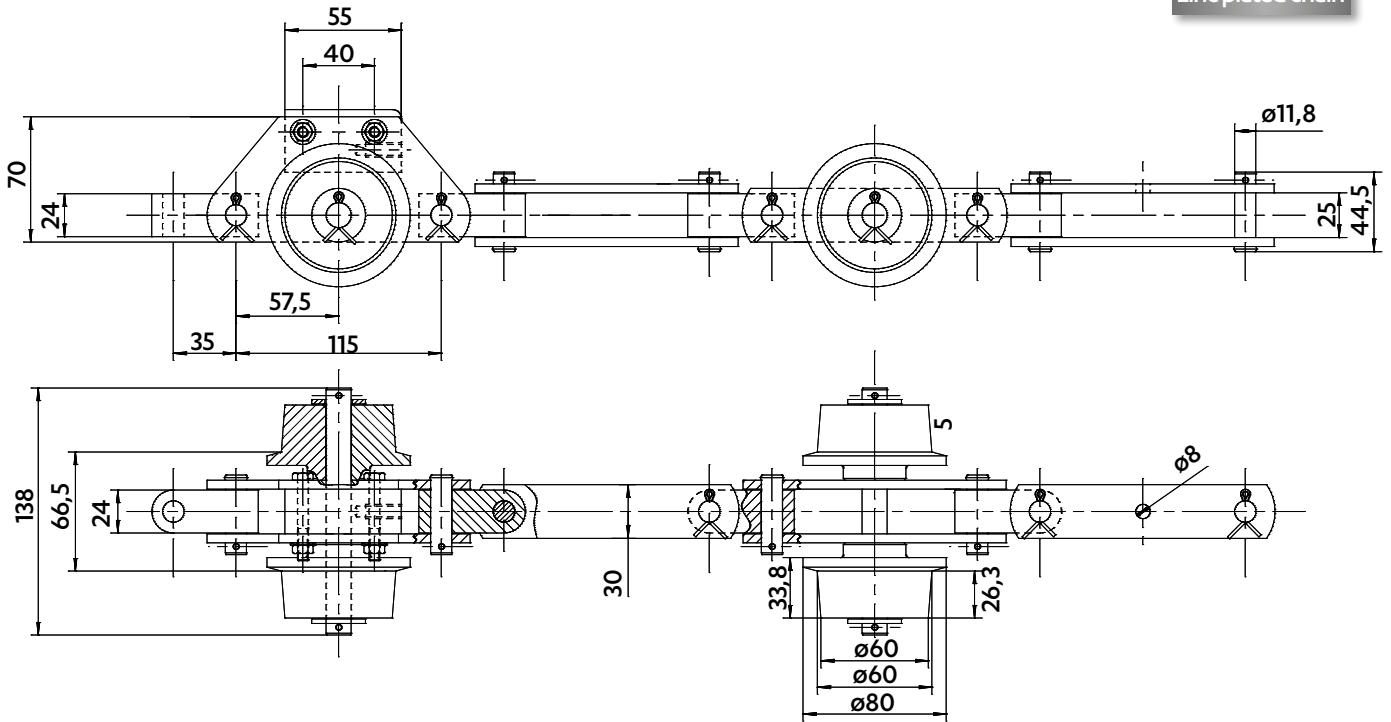


CHAINS FOR ABATTOIRS

Dimensions in mm

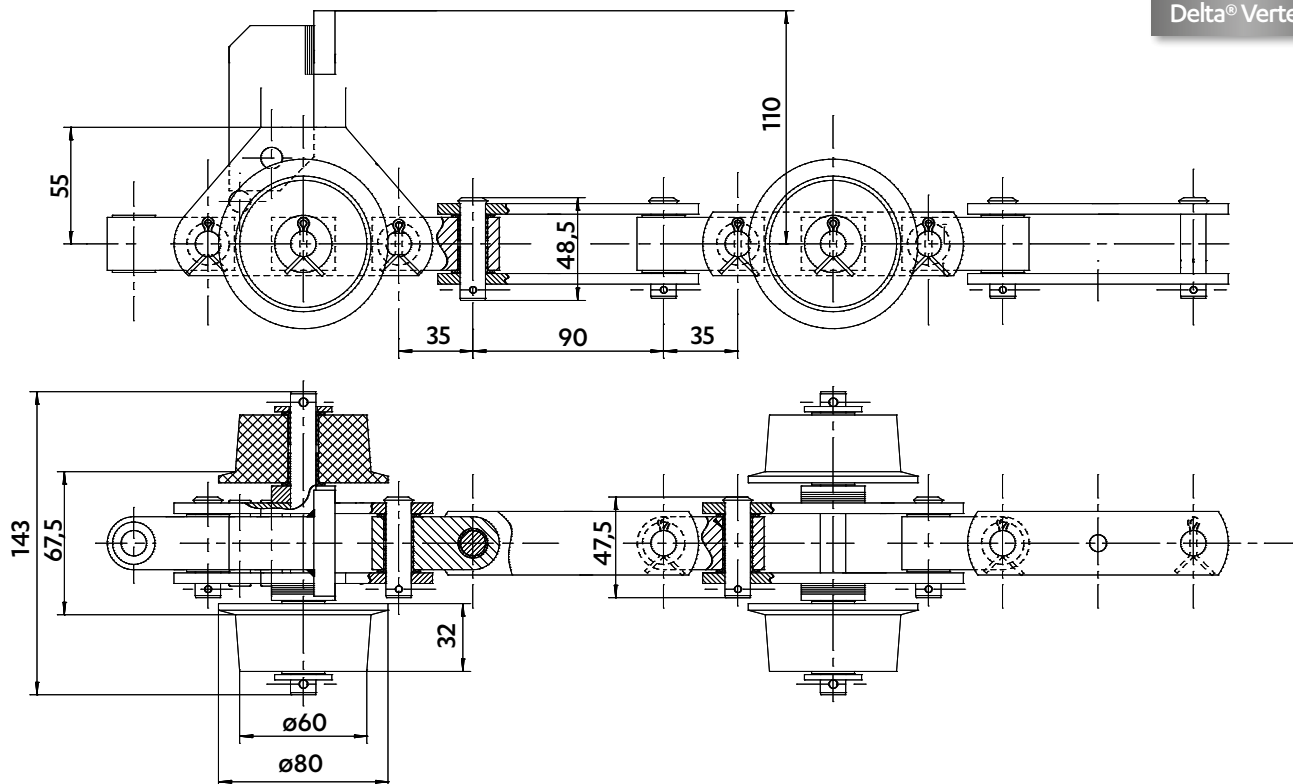
MULTIDIRECTIONAL CHAINS - BI-PLANAR CHAIN

5872-01
zinc plated chain



CHAIN OF CONVEYOR BEFORE BLEEDING

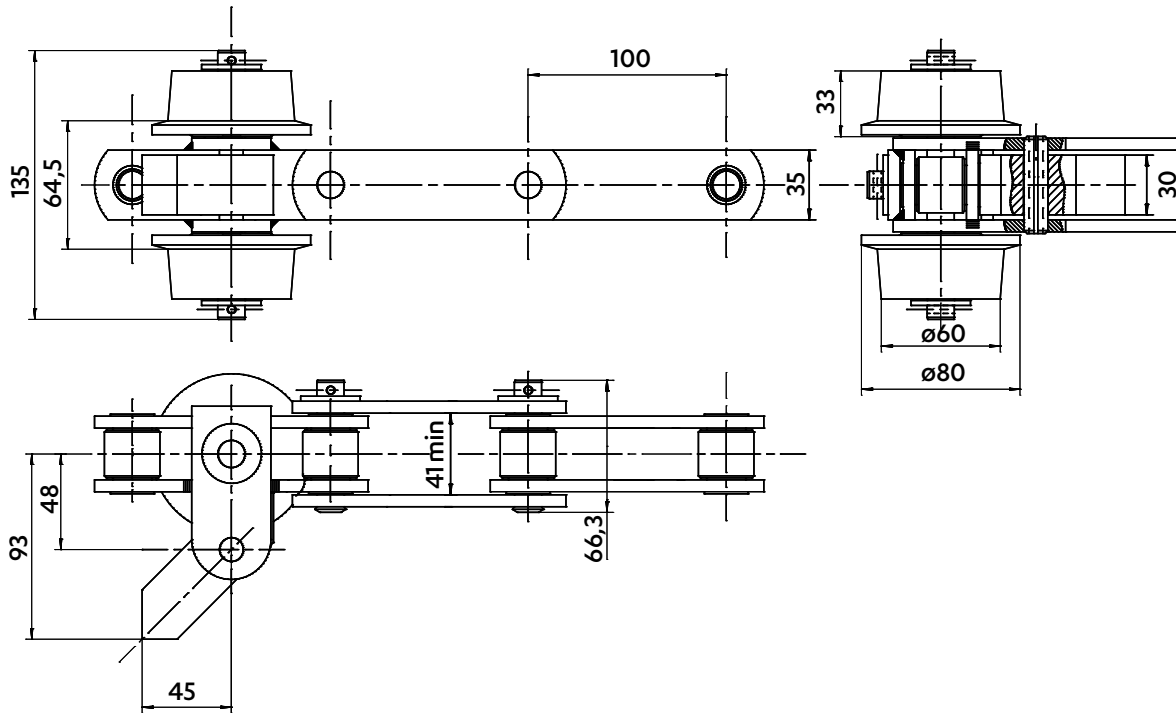
5860-01
Delta® Verte®



Dimensions in mm

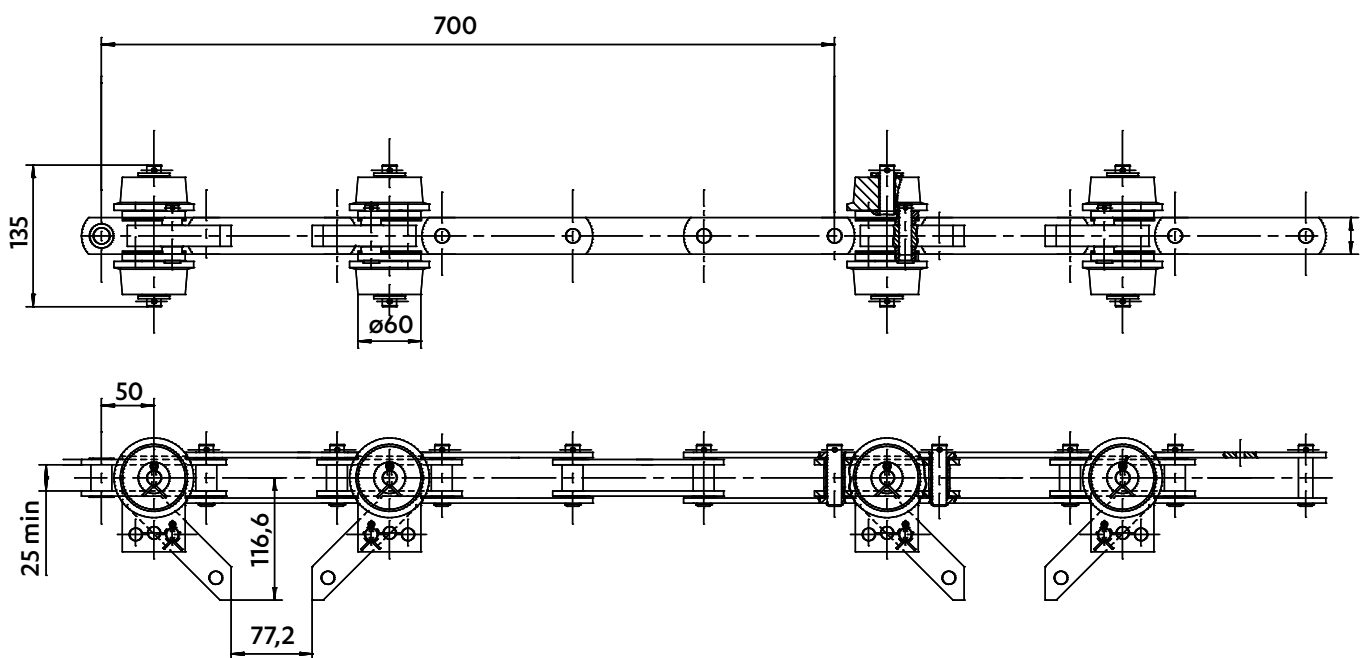
CHAIN FOR BLEEDING

5377-63
Delta® Verte®



CHAINS FOR WHIPPING MACHINES

5515-23
zinc plated chain



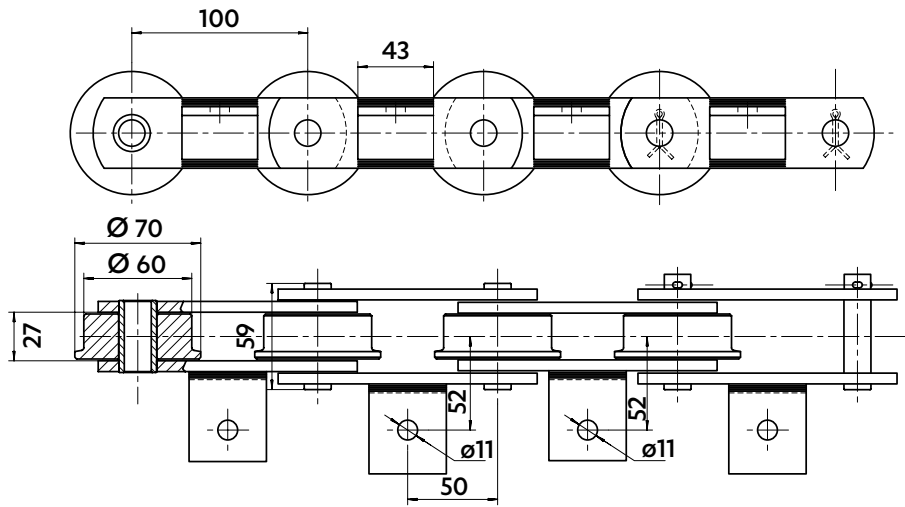


Dimensions in mm

CHAINS FOR BEVERAGES

CHAIN FOR DISTILLERY

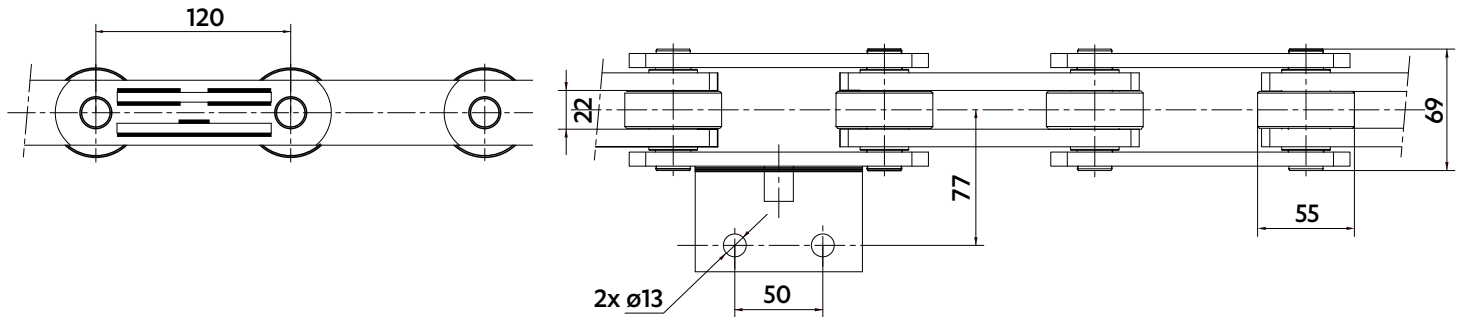
5271-76



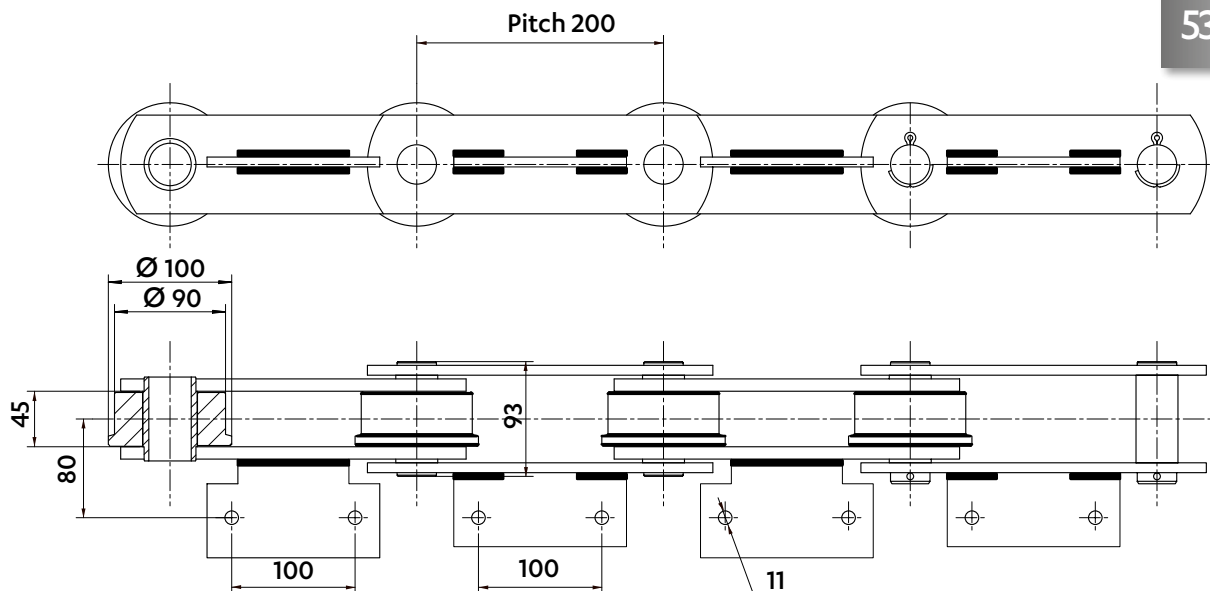
CHAINS FOR GRAPES FERMENTATION TANKS

5618-03
Breaking load : 140 kN

- dimensions and frequency of attachments are on request
- These chains are in stainless steel with bushes in bronze



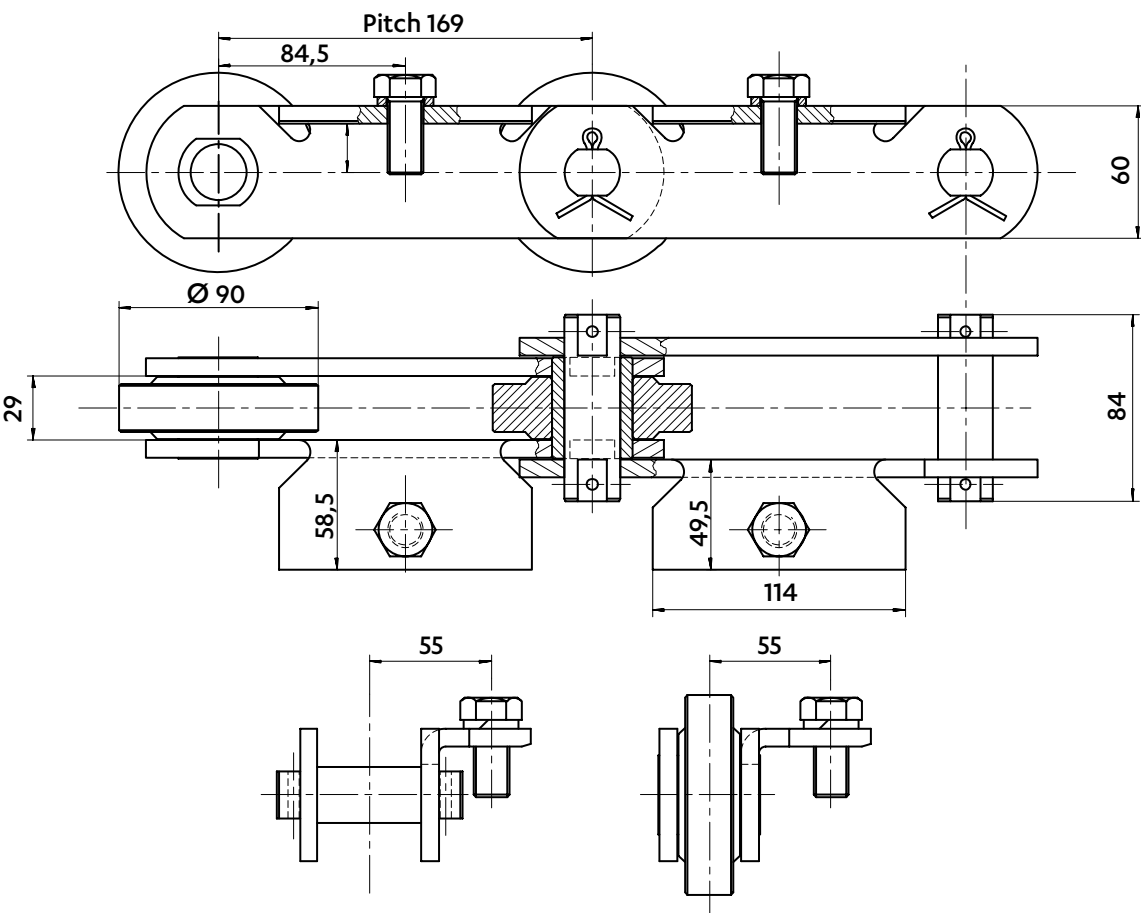
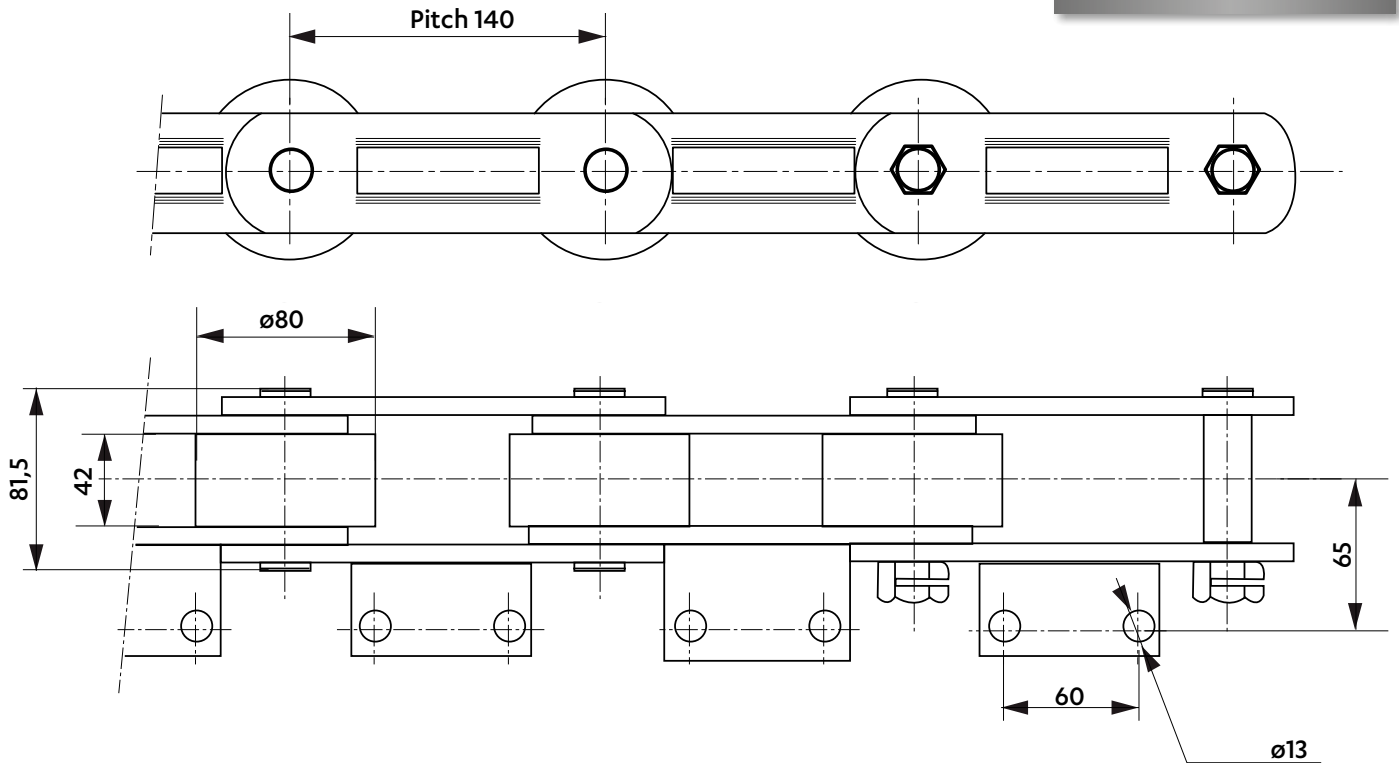
5308-46



Dimensions in mm

CHAINS FOR BOTTLE WASHING

5669-01
Breaking load : 224 kN



5931-01