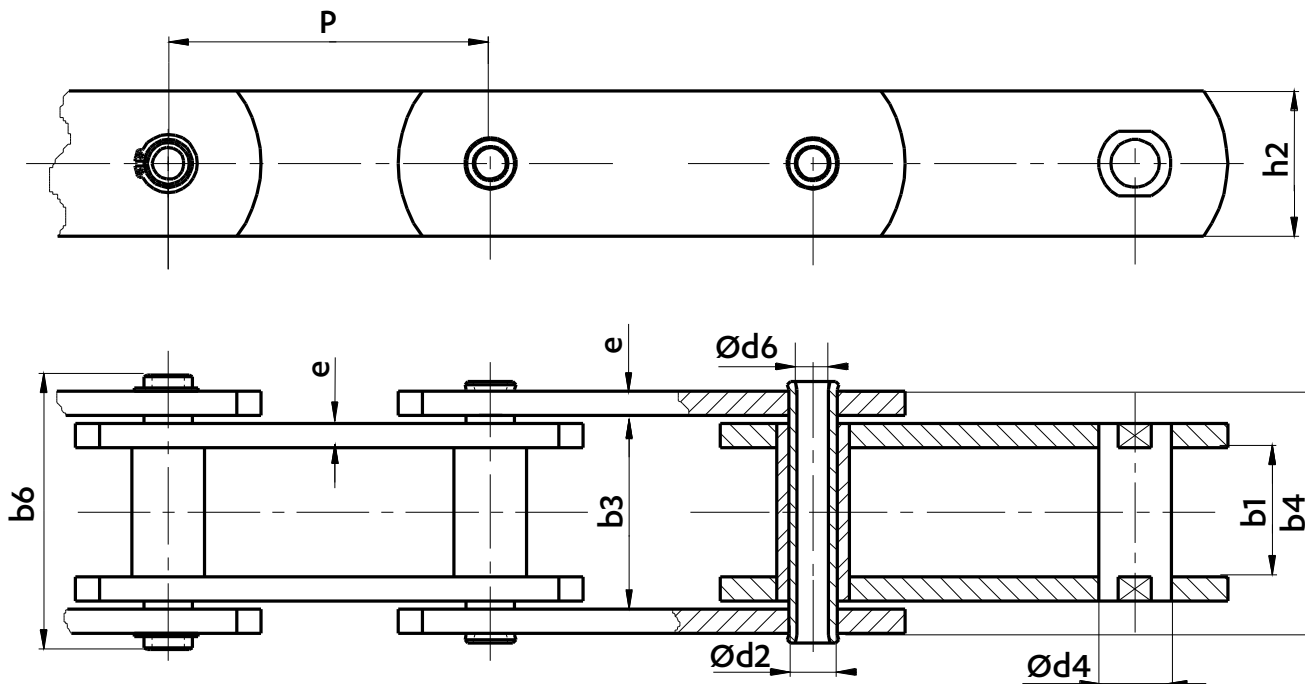
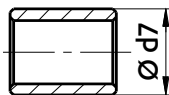


HOLLOW PIN FV CONVEYOR CHAINS

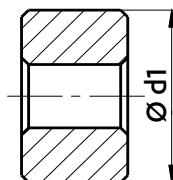
Dimensions in mm



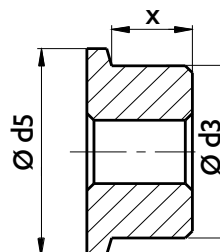
ARTICULATIONS



WITH SMALL ROLLERS
S



WITH PLAIN WHEELS
P



WITH FLANGED WHEELS
F

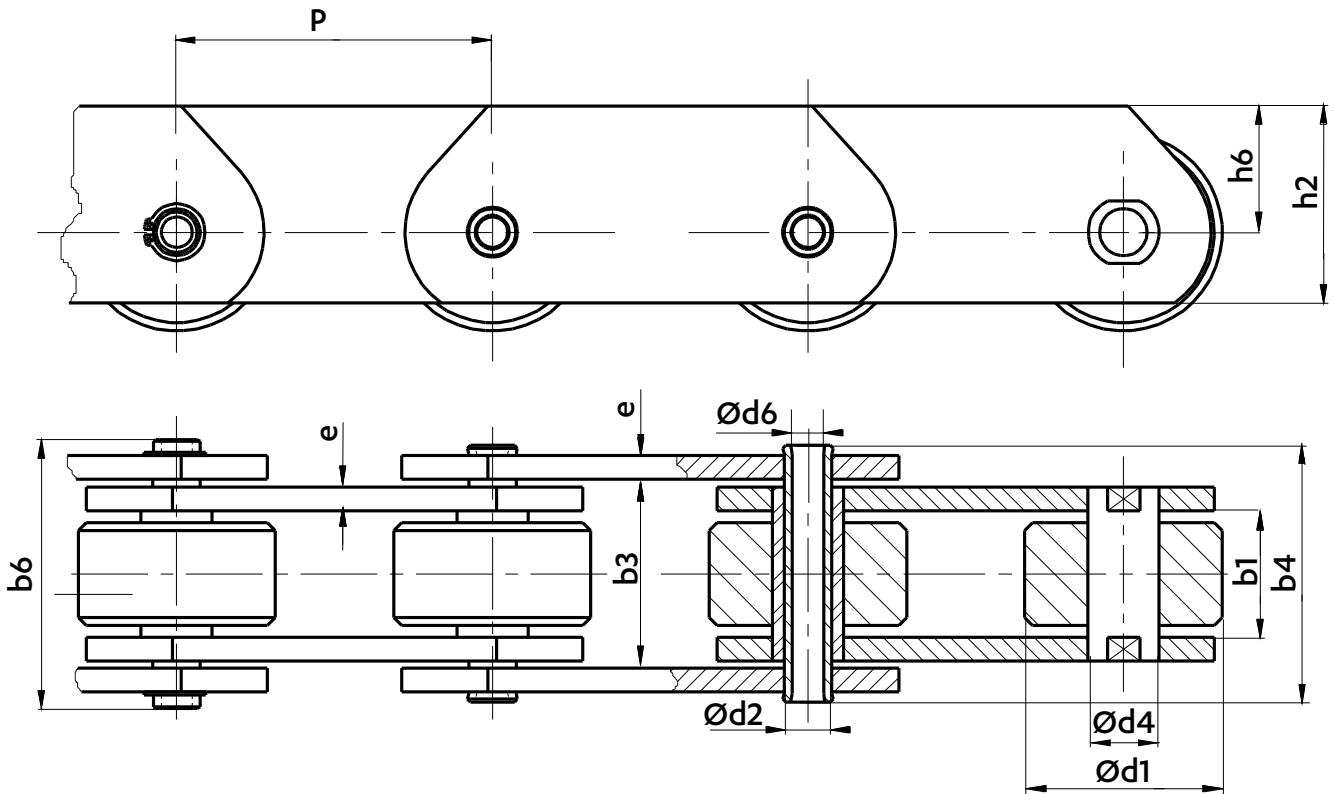
Type of articulation

Reference	Pitch P								PLATES		PIN		ARTICULATION					WIDTH				Breaking load Rr min. kN	
									Height h2 nom.	Thickness e nom.	Pin Ø d2	pin bore Ø d6	Bush Ø d4	Roller Ø d7	Wheel Ø d1	Flanged wheel Ø		flanged wheel width x	between inner plates b1 min	between outer plates b3 min	over the flattened pins b4 max.		over the cottered pins b6 max.
																d3	d5						
*FVC 63	50	63	80	100	125	160	200	-	30	4	12	8,2	18	26	40	50	60	15,5	22	31,0	46	55	46
*FVC 90	50	63	80	100	125	160	200	250	35	5	14	10,2	20	30	48	63	73	18,5	25	36,0	53	62	55
FVC112	80	100	125	160	200	250	315	-	40	6	16	11,2	22	32	55	72	87	22,0	30	43,0	63	72	78
FVC140	80	100	125	160	200	250	315	400	45	6	18	12,2	26	36	60	80	95	26,0	35	48,0	68	80	105
FVC180	-	100	125	160	200	250	315	400	50	8	20	14,3	30	42	70	100	120	35,0	45	62,5	86	100	118
FVC250	-	-	125	160	200	250	315	400	60	8	26	18,3	36	50	80	125	145	42,0	55	73,0	98	114	206
FVC315	-	-	125	160	200	250	315	400	70	10	30		42	60	90	140	170	50,0	65	87,0	117	133	290

* : Pins not flattened

Dimensions in mm

CHAIN TYPE P WITH PLAIN WHEELS



Reference	Pitch P									PLATES			PIN		ARTICULATION		WIDTH				Breaking load Rr min. kN
										Height		Thickness e	Pin Ø d2	pin bore Ø d6	Bush Ø d4	Wheel Ø d1	between inner plates	between outer plates	over the flattened pins	over the cottered pins	
										h2 nom.	h6 nom.						b1 min	b3 min	b4 max.	b6 max.	
*FVC 63/D	63	50	63	80	100	125	160	200	-	40	25	4	12	8,2	18	40	22	31,0	46	55	55
*FVC 90/D	90	50	63	80	100	125	160	200	250	45	27,5	5	14	10,2	20	48	25	36,0	53	62	78
FVC 112/D	112	80	100	125	160	200	250	315	-	50	30	6	16	11,2	22	55	30	43,0	63	72	105
FVC 140/D	140	80	100	125	160	200	250	315	400	60	37,5	6	18	12,2	26	60	35	48,0	68	80	118
FVC 180/D	180	-	100	125	160	200	250	315	400	70	45	8	20	14,3	30	70	45	62,5	86	100	206
FVC 250/D	250	-	-	125	160	200	250	315	400	80	50	8	26	18,3	36	80	55	73,0	98	114	290
FVC 315/D	315	-	-	125	160	200	250	315	400	90	55	10	30	20,3	42	90	65	87,0	117	133	290

* : Pins not flattened