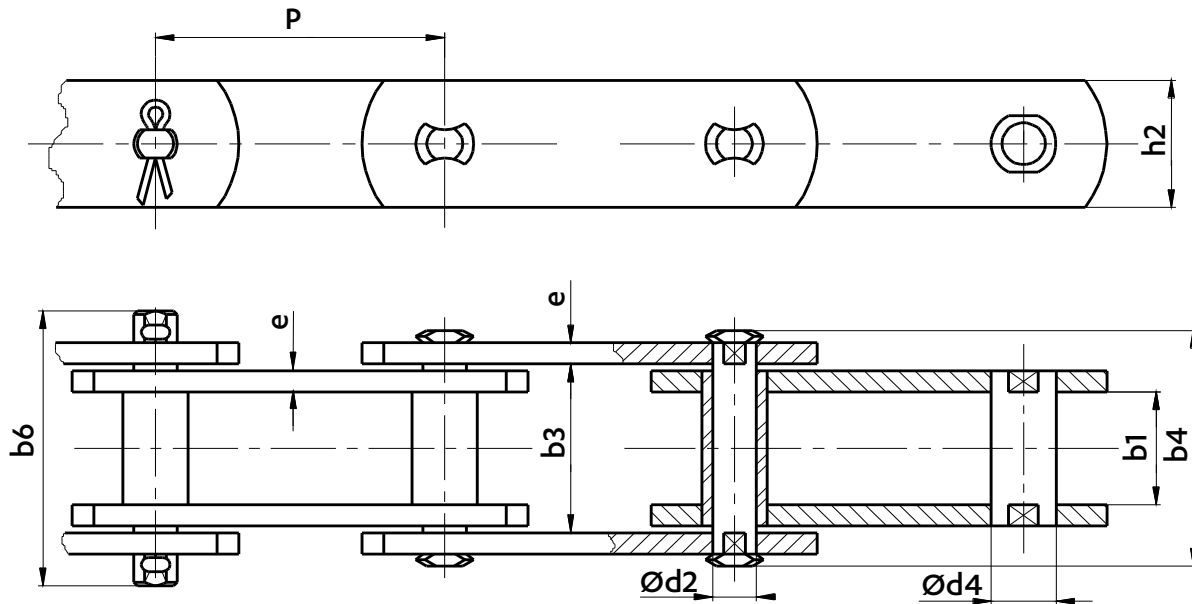
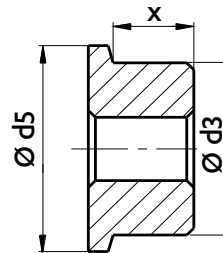
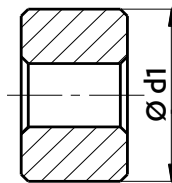
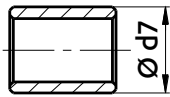


FV CONVEYOR CHAINS

Dimensions in mm



ARTICULATIONS



WITH SMALL ROLLERS  
**S**

WITH PLAIN WHEELS  
**P**

WITH FLANGED WHEELS  
**F**

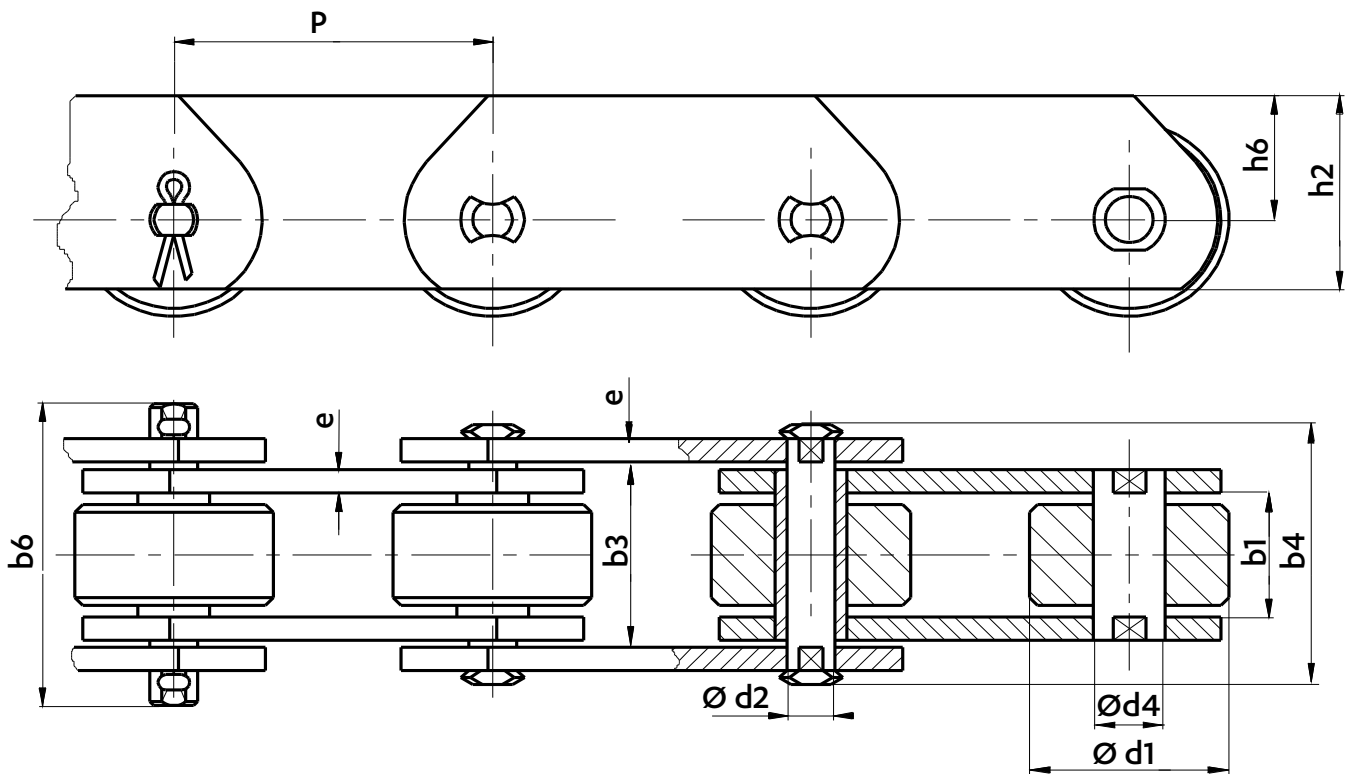
Type of articulation

Type of chain		PLATES										ARTICULATION						WIDTH				Breaking load Rr min. kN
1*	2*	Pitch										Bush Ø	Roller Ø	Wheel Ø	Flanged wheel Ø	flanged wheel width	between inner plates	between outer plates	over the flattened pins	over the cotted pins		
		P	h2 nom.	e nom.	d2	d4	d7	d1	d3	d5	x	b1 min	b3 min	b4 max	b6 max							
FV 63	FVS 63	50 63 80 100 125 160 200	30	4	12	18	26	40	50	60	15,5	22	31,0	46	55	63						
FV 90	FVS 90	50 63 80 100 125 160 200 250	35	5	14	20	30	48	63	73	18,5	25	36,0	53	62	90						
FV 112	FVS 112	80 100 125 160 200 250 315	40	6	16	22	32	55	72	87	22	30	43,0	63	72	112						
FV 140	FVS 140	80 100 125 160 200 250 315 400	45	6	18	26	36	60	80	95	26	35	48,0	68	80	140						
FV 180	FVS 180	- 100 125 160 200 250 315 400	50	8	20	30	42	70	100	120	35	45	62,5	86	100	180						
FV 250	FVS 250	- - 125 160 200 250 315 400	60	8	26	36	50	80	125	145	42	55	73,0	98	114	250						
FV 315	FVS 315	- - 125 160 200 250 315 400	70	10	30	42	60	90	140	170	50	65	87,0	103	133	315						
FV 400	FVS 400	- - - 160 200 250 315 400	70	12	32	44	60	100	150	185	54	70	97,0	121	141	400						
FV 500	FVS 500	- - - 160 200 250 315 400 500	80	12	36	50	70	110	160	195	60	80	107	136	151	500						
FV 630	FVS 630	- - - 200 250 315 400 500	100	12	42	56	80	120	170	210	66	90	117	142	163	630						

\* TYPE1 : Chains with flattened pins and bushes (for wood industry)

\* TYPE2 : Chains with flattened and welded pins and bushes (for wood industry)

Dimensions in mm

**CHAIN TYPE P WITH PLAIN WHEELS**


Type of chain		Pitch								PLATES			ARTICULATION			WIDTH				Breaking load kN
1*	2*	P								Height	Thickness	Pin Ø	Bush Ø	Wheel Ø	between inner plates	between outer plates	over the flattened pins	over the cotted pins		
										h2 nom.	h6 nom.	e nom.	d2	d4	d1	b1 min	b3 min	b4 max.	b6 max.	
FV 40/D	FVS 40/D	40	50	63	80	100	125	160	-	35	22	3	10	15	32	18	25,0	37	44	40
FV 63/D	FVS 63/D	50	63	80	100	125	160	200	-	40	25	4	12	18	40	22	31,0	46	55	63
FV 90/D	FVS 90/D	50	63	80	100	125	160	200	250	45	27,5	5	14	20	48	25	36,0	53	62	90
FV 112/D	FVS 112/D	80	100	125	160	200	250	315	-	50	30	6	16	22	55	30	43,0	63	72	112
FV 140/D	FVS 140/D	80	100	125	160	200	250	315	400	60	37,5	6	18	26	60	35	48,0	68	80	140
FV 180/D	FVS 180/D	-	100	125	160	200	250	315	400	70	45	8	20	30	70	45	62,5	86	100	180
FV 250/D	FVS 250/D	-	-	125	160	200	250	315	400	80	50	8	26	36	80	55	73,0	98	114	250
FV 315/D	FVS 315/D	-	-	125	160	200	250	315	400	90	55	10	30	42	90	65	87,0	117	133	315
FV 400/D	FVS 400/D	-	-	-	160	200	250	315	400	90	55	12	32	44	100	70	97,0	131	141	400
FV 500/D	FVS 500/D	-	-	160	200	250	315	400	500	100	60	12	36	50	110	80	107,0	141	151	500
FV 630/D	FVS 630/D	-	-	-	200	250	315	400	500	120	70	12	42	56	120	90	117,0	153	163	630

\* TYPE 1 : Chains with flattened pins and bushes (for wood industry)

\* TYPE 2 : Chains with flattened and welded pins and bushes (for wood industry)