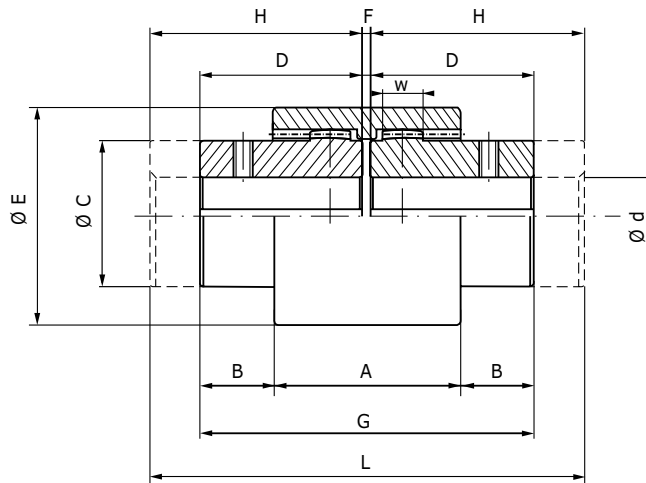



FLEXIBLE COUPLINGS


FLEXIBLE COUPLINGS WITH CURVED TEETH AND POLYAMID CROWN 6.6														Max Speed (rpm)	Nominal Torque (Nm)
Reference	Bore Ø d		Number of teeth	W	A	B	Ø C	D	Ø E	F	G	H	L		
	Nom.	Max													
GF 14 ..	6	14	20	8	37	6.5	24	23	40	4	50	40	84	14000	10
GF 19 ..	8	19	24	8	37	8.5	30	25	48	4	54	40	84	12000	16
GF 24 ..	10	24	28	8	41	7.5	36	26	52	4	56	50	104	10000	20
GF 28 ..	10	28	34	10	46	19	44	40	66	4	84	55	114	8000	45
GF 32 ..	12	32	40	10	48	18	50	40	76	4	84	55	114	7100	60
GF 38 ..	14	38	44	12	48	18	58	40	83	4	84	60	124	6300	80
GF 42 ..	20	42	50	14	50	19	65	42	92	4	88	60	124	6000	100
GF 48 ..	20	48	50	14	50	27	67	50	95	4	104	60	124	5600	140
GF 55 ..	25	55	45	16	58	25	82	52	114	4	108	65	134	4800	285
GF 65 ..	25	65	42	20	68	23	95	55	132	4	114	70	144	4000	380

.. Example of reference :
Loose part :

GF-..N = standard bush

GF-..L = long bush

GF-..M = polyamid 6.6 element

Complete coupling :

GF .. NN = with 2 standard bushes

GF .. NL = with 1 standard bush + 1 long bush

GF .. LL = with 2 long bushes

Technical information:

- Easy to assemble and disassemble
- Operating temperatures from -20°C to +120°C
- Silent operation
- Curved shape teeth leading to an angle, axle ($\pm 1\text{mm}$) and radial ($\pm 2^\circ$) offset
- No maintenance
- machined bore $\text{ØdH7} + \text{JS9}$ keyway on request
- Material : Steel C43 UNI 7847