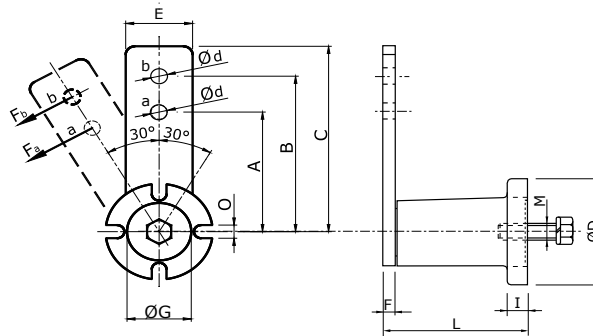




ELASTIC CHAIN TENSIONERS - TYPE BT



| Reference | A | B | C | ØD | Ød | E | F | ØG | I | L | M | O | Fa pos. a [N] | Fb pos. b [N] | Kg |
|-----------|-----|-----|-------|-----|------|----|----|----|----|-----|-----|----|---------------|---------------|------|
| BT 11 | 60 | 80 | 90 | 40 | 8,5 | 25 | 5 | 20 | 6 | 50 | M6 | 7 | 0-113 | 0-85 | 0,28 |
| BT 15 | 80 | 100 | 112,5 | 50 | 10,5 | 30 | 5 | 30 | 8 | 62 | M8 | 9 | 0-170 | 0-136 | 0,48 |
| BT 18 | 80 | 100 | 115 | 60 | 10,5 | 35 | 6 | 35 | 10 | 76 | M10 | 9 | 0-425 | 0-340 | 0,73 |
| BT 27 | 100 | 130 | 155 | 80 | 12,5 | 50 | 8 | 48 | 15 | 105 | M12 | 11 | 0-1027 | 0-790 | 2,00 |
| BT 38 | 140 | 175 | 205 | 100 | 20,5 | 65 | 10 | 62 | 15 | 136 | M16 | 13 | 0-2000 | 0-1600 | 4,20 |
| BT 45 | 180 | 225 | 260 | 120 | 20,5 | 80 | 12 | 80 | 18 | 196 | M20 | 13 | 0-3190 | 0-2550 | 7,00 |
| BT 50 | 200 | 250 | 290 | 130 | 20,5 | 90 | 20 | 78 | 20 | 210 | M24 | 17 | 0-4950 | 0-3950 | 9,60 |

Elastic tensioner arm type BT are made in epoxy coated cast-iron. they are also available in galvanized, nickel plated or stainless steel

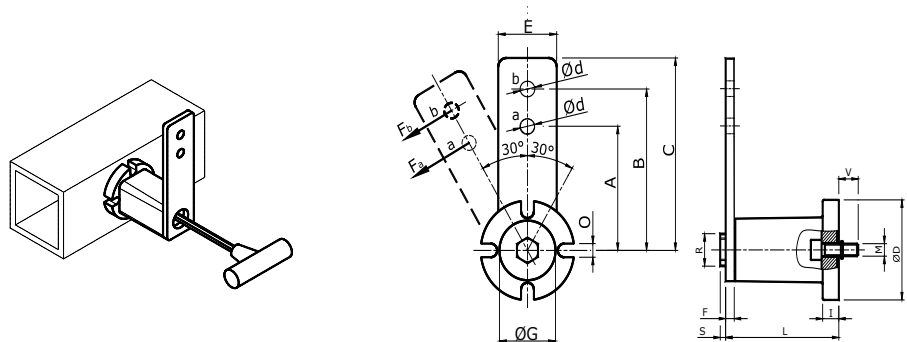
(From BT11 to BT38 : consult us for other dimensions).

Rotation angle +/- 30° - Operating temperature from - 40°C to + 80°C

Fa: Force made by the tensioner with the kit positioned in the a hole

Fb: Force made by the tensioner with the kit positioned in the b hole

ELASTIC CHAIN TENSIONERS - TYPE BTF



| Reference | A | B | C | ØD | Ød | E | F | ØG | I | L | M | O | ØR | S | V | Fa pos. a [N] | Fb pos. b [N] | Kg |
|-----------|-----|-----|-------|-----|------|----|----|----|----|-----|-----|----|----|-----|----|---------------|---------------|------|
| BTF 11 | 60 | 80 | 90 | 40 | 8,5 | 25 | 5 | 20 | 6 | 50 | M5 | 7 | 14 | 3,5 | 10 | 0-113 | 0-85 | 0,25 |
| BTF 15 | 80 | 100 | 112,5 | 50 | 10,5 | 30 | 5 | 30 | 8 | 62 | M6 | 9 | 20 | 5 | 14 | 0-170 | 0-136 | 0,45 |
| BTF 18 | 80 | 100 | 115 | 60 | 10,5 | 35 | 6 | 35 | 10 | 76 | M8 | 9 | 20 | 5 | 19 | 0-425 | 0-340 | 0,69 |
| BTF 27 | 100 | 130 | 155 | 80 | 12,5 | 50 | 8 | 48 | 15 | 105 | M10 | 11 | 26 | 5 | 18 | 0-1027 | 0-790 | 1,90 |
| BTF 38 | 140 | 175 | 205 | 100 | 20,5 | 65 | 10 | 62 | 15 | 136 | M12 | 13 | 35 | 6 | 20 | 0-2000 | 0-1600 | 3,90 |
| BTF 45 | 180 | 225 | 260 | 120 | 20,5 | 80 | 12 | 80 | 18 | 196 | M16 | 13 | 40 | 6 | 36 | 0-3190 | 0-2550 | 6,90 |
| BTF 50 | 200 | 250 | 290 | 130 | 20,5 | 90 | 20 | 78 | 20 | 210 | M20 | 17 | 40 | 6 | 25 | 0-4950 | 0-3950 | 9,50 |

Front fixation with inner screws "M"

Rotation angle +/- 30° - Operating temperature from - 40°C to + 80°C

Fa: Force made by the tensioner with the kit positioned in the a hole

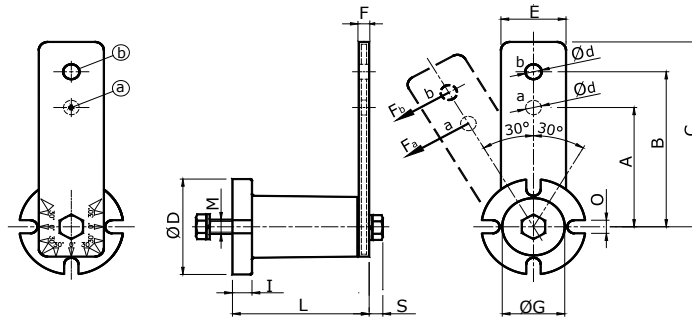
Fb: Force made by the tensioner with the kit positioned in the b hole



ELASTIC CHAIN TENSIONERS - TYPE BTP



BTP tensioners are suitable for humid or corrosive environments. BTP tensioners are manufactured in plastic with metal inserts. The BTP model has an additional reinforcement screw.



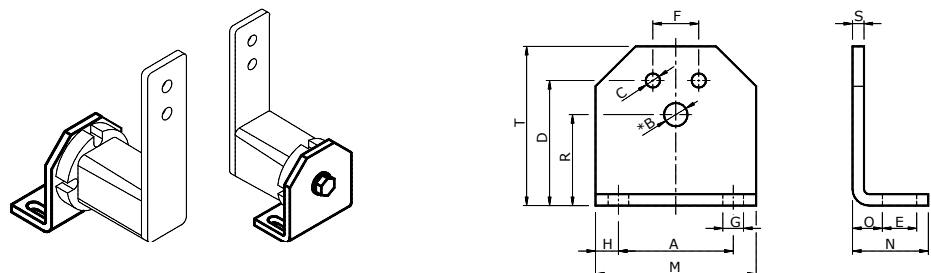
| Reference | A | B | C | ØD | Ød | E | F | ØG | I | L | M | O | S | Fa pos. a [N] | Fb pos. b [N] | Kg |
|-----------|-----|-----|-------|----|------|----|----|----|----|-----|--------|----|------|---------------|---------------|------|
| BTP 11 | 60 | 80 | 90 | 40 | 8,5 | 24 | 7 | 20 | 6 | 52 | M6x20 | 7 | 7,5 | 0-113 | 0-85 | 0,10 |
| BTP 15 | 80 | 100 | 112,5 | 50 | 10,5 | 30 | 8 | 30 | 8 | 66 | M8x25 | 9 | 9,2 | 0-170 | 0-136 | 0,20 |
| BTP 18 | 80 | 100 | 115 | 60 | 10,5 | 36 | 8 | 35 | 10 | 79 | M10x30 | 9 | 10,5 | 0-425 | 0-340 | 0,26 |
| BTP 27 | 100 | 130 | 155 | 80 | 12,5 | 50 | 10 | 48 | 15 | 108 | M12x40 | 11 | 10,5 | 0-1027 | 0-790 | 0,72 |

Rotation angle + / - 30° - Operating temperature from - 10°C to + 80°C
 Fa: Force made by the tensioner with the kit positioned in the a hole
 Fb: Force made by the tensioner with the kit positioned in the b hole

TENSIONERS BRACKET SUPPORTS - TYPE SBT



SBT support is used to facilitate the mounting of the elastic element on the machine.



| Reference | A | B* | C | D | E | F | G | H | M | N | O | R | S | T | Kg | |
|-----------|-----|----|------|------|-----|------|----|------|------|-----|----|------|----|----|-----|------|
| SBT 11 | 30 | 11 | 6,5 | 5,5 | 35 | 13 | 10 | 7 | 7,5 | 45 | 30 | 11,5 | 27 | 4 | 46 | 0,09 |
| SBT 15 | 40 | 15 | 8,5 | 6,5 | 44 | 13 | 12 | 7 | 7,5 | 55 | 32 | 13,5 | 34 | 5 | 58 | 0,17 |
| SBT 18 | 50 | 18 | 10,5 | 8,5 | 55 | 15,5 | 20 | 9,5 | 10 | 70 | 38 | 16,5 | 43 | 6 | 74 | 0,29 |
| SBT 27 | 65 | 27 | 12,5 | 10,5 | 75 | 21,5 | 25 | 11,5 | 12,5 | 90 | 52 | 21 | 57 | 8 | 98 | 0,72 |
| SBT 38 | 80 | 38 | 16,5 | 12,5 | 85 | 24 | 35 | 14 | 15 | 110 | 55 | 21 | 66 | 8 | 116 | 0,93 |
| SBT 45 | 100 | 45 | 20,5 | 12,5 | 110 | 30 | 40 | 18 | 20 | 140 | 66 | 26 | 80 | 10 | 140 | 1,82 |

* Bore B is used for the fixation of arms type BT and BTF