



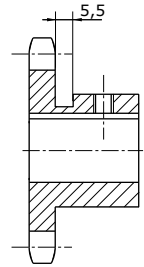
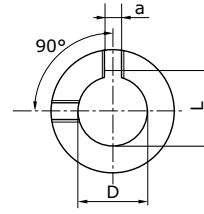
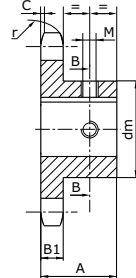
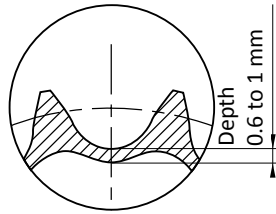
FINISHED SPROCKETS - READY TO USE - 06B

r
10 **C**
1 **B1**
5,3

PITCH : 3/8" x 7/32"
PITCH : 9,525 x 5,72 mm
MATERIAL : C45



Sprockets with flanged hub for simplex roller chains as per standards: DIN 8187 - ISO 606. Ready-to-use with finished H7 bore, JS9 keyway in a tooth axle, 2 grub screws at 90° and induction 45/53 HRC hardened teeth.



For dimensions a, L and M, see table page 103

Dimensions in mm

Z	Reference	D	A	dm	Z	Reference	D	A	dm	Z	Reference	D	A	dm	
10	P106B010/10	10	22	24	17	P106B017/12	12	28	40	22	P106B022/15	15	28	50	
	P106B010/11	11	22	24		P106B017/14	14	28	40		P106B022/16	16	28	50	
	P106B010/12	12	22	26		P106B017/15	15	28	40		P106B022/18	18	28	50	
	P106B010/14	14	22	29		P106B017/16	16	28	40		P106B022/19	19	28	50	
11	P106B011/10	10	25	24	18	P106B017/18	18	28	40	23	P106B022/20	20	28	50	
	P106B011/12	12	25	26		P106B017/19	19	28	40		P106B022/22	22	28	50	
	P106B011/14	14	25	29Δ		P106B017/20	20	28	40		P106B022/24	24	28	50	
	P106B011/15	15	25	30Δ		P106B017/22	22	28	40		P106B022/25	25	28	50	
12	P106B011/16	16	25	31Δ	19	P106B017/24	24	28	40	24	P106B023/15	15	28	52	
	P106B012/10	10	25	25		P106B017/25	25	28	42		P106B023/16	16	28	52	
	P106B012/12	12	25	26		20	P106B018/12	12	28		43	P106B023/18	18	28	52
	P106B012/14	14	25	29			P106B018/14	14	28		43	P106B023/19	19	28	52
P106B012/15	15	25	30	P106B018/15	15		28	43	P106B023/20	20	28	52			
P106B012/16	16	25	31Δ	P106B018/16	16		28	43	P106B023/22	22	28	52			
13	P106B013/10	10	25	28	21	P106B018/18	18	28	43	25	P106B023/24	24	28	52	
		P106B013/12	12	25		28	P106B018/19	19	28		43	P106B023/25	25	28	52
		P106B013/14	14	25		29	P106B018/20	20	28		43	P106B024/15	15	28	54
		P106B013/15	15	25		30	P106B018/22	22	28		43	P106B024/16	16	28	54
14	P106B013/16	16	25	31	22	P106B018/24	24	28	43	30	P106B024/18	18	28	54	
	P106B013/18	18	25	35Δ		P106B018/25	25	28	43		P106B024/19	19	28	54	
	P106B014/12	12	25	31		23	P106B019/12	12	28		45	P106B024/20	20	28	54
	P106B014/14	14	25	31			P106B019/14	14	28		45	P106B024/22	22	28	54
P106B014/15	15	25	31	P106B019/15	15		28	45	P106B024/24	24	28	54			
P106B014/16	16	25	31	P106B019/16	16		28	45	P106B024/25	25	28	54			
15	P106B014/18	18	25	35	24	P106B019/18	18	28	45	25	P106B025/16	16	28	57	
	P106B014/19	19	25	35		P106B019/19	19	28	45		P106B025/18	18	28	57	
	P106B015/12	12	25	34		P106B019/20	20	28	45		P106B025/19	19	28	57	
	P106B015/14	14	25	34		P106B019/22	22	28	45		P106B025/20	20	28	57	
16	P106B015/15	15	25	34	25	P106B019/24	24	28	45	30	P106B025/22	22	28	57	
	P106B015/16	16	25	34		P106B019/25	25	28	45		P106B025/24	24	28	57	
	P106B015/18	18	25	34		26	P106B020/12	12	28		46	P106B025/25	25	28	57
	P106B015/19	19	25	35			P106B020/14	14	28		46	P106B030/20	20	30	60
P106B015/20	20	25	36	P106B020/15	15		28	46	P106B030/22	22	30	60			
P106B015/22	22	25	38	P106B020/16	16		28	46	P106B030/24	24	30	60			
17	P106B015/24	24	25	42Δ	27	P106B020/18	18	28	46	30	P106B030/25	25	30	60	
	P106B015/25	25	25	42Δ		P106B020/19	19	28	46		P106B030/28	28	30	60	
	P106B016/12	12	28	37		P106B020/20	20	28	46		P106B030/30	30	30	60	
	P106B016/14	14	28	37		P106B020/22	22	28	46						
18	P106B016/15	15	28	37	28	P106B020/24	24	28	46						
	P106B016/16	16	28	37		P106B020/25	25	28	46						
	P106B016/18	18	28	37		P106B021/15	15	28	48						
	P106B016/19	19	28	37		P106B021/16	16	28	48						
19	P106B016/20	20	28	37	29	P106B021/18	18	28	48						
	P106B016/22	22	28	37		P106B021/19	19	28	48						
	P106B016/24	24	28	42		P106B021/20	20	28	48						
	P106B016/25	25	28	42		P106B021/22	22	28	48						
20					30	P106B021/24	24	28	48						
						P106B021/25	25	28	48						

Δ = grooved sprocket version

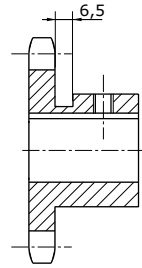
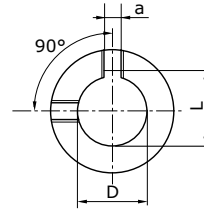
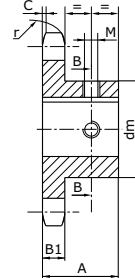
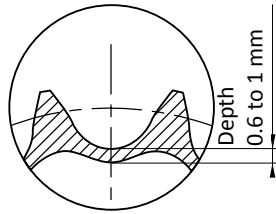
FINISHED SPROCKETS - READY TO USE - 08B

r 13
C 1,3
B1 7,2

PITCH : 1/2" x 5/16"
PITCH : 12,7 x 7,75 mm
MATERIAL : C45



Sprockets with flanged hub for simplex roller chains as per standards: DIN 8187 - ISO 606. Ready-to-use with finished H7 bore, JS9 keyway in a tooth axle, 2 grub screws at 90° and induction 45/53 HRC hardened teeth.



For dimensions a, L and M, see table page 103

Dimensions in mm

Z	Reference	D	A	dm	Z	Reference	D	A	dm	Z	Reference	D	A	dm
10	P108B010/12	12	25	26	16	P108B016/15	15	28	50	21	P108B021/16	16	28	68
	P108B010/14	14	25	29		P108B016/16	16	28	50		P108B021/18	18	28	68
	P108B010/15	15	25	30		P108B016/18	18	28	50		P108B021/19	19	28	68
	P108B010/16	16	25	31		P108B016/19	19	28	50		P108B021/20	20	28	68
11	P108B011/12	12	25	29	17	P108B017/20	20	28	50	22	P108B022/22	22	28	68
	P108B011/14	14	25	29		P108B017/22	22	28	50		P108B022/24	24	28	68
	P108B011/15	15	25	30		P108B017/24	24	28	50		P108B022/25	25	28	68
	P108B011/16	16	25	31		P108B017/25	25	28	50		P108B022/28	28	28	68
12	P108B011/18	18	25	34	18	P108B017/28	28	28	50	23	P108B023/30	30	28	70
	P108B011/19	19	25	35		P108B017/30	30	28	50		P108B023/32	32	28	70
	P108B012/12	12	28	33		P108B017/32	32	28	52		P108B023/35	35	28	70
	P108B012/14	14	28	33		P108B018/16	16	28	56		P108B023/38	38	28	70
13	P108B012/15	15	28	33	19	P108B018/18	18	28	56	24	P108B024/19	19	28	70
	P108B012/16	16	28	33		P108B018/19	19	28	56		P108B024/20	20	28	70
	P108B012/18	18	28	33		P108B018/20	20	28	56		P108B024/22	22	28	70
	P108B012/19	19	28	35		P108B018/22	22	28	56		P108B024/24	24	28	70
14	P108B012/20	20	28	36	20	P108B018/24	24	28	56	25	P108B025/25	25	28	70
	P108B012/22	22	28	38		P108B018/25	25	28	56		P108B025/28	28	28	70
	P108B012/24	24	28	41Δ		P108B018/28	28	28	56		P108B025/30	30	28	70
	P108B012/25	25	28	42Δ		P108B018/30	30	28	56		P108B025/32	32	28	70
15	P108B013/12	12	28	37	21	P108B018/32	32	28	56	30	P108B030/25	25	30	80
	P108B013/14	14	28	37		P108B018/35	35	28	56		P108B030/28	28	30	80
	P108B013/15	15	28	37		P108B019/16	16	28	60		P108B030/30	30	30	80
	P108B013/16	16	28	37		P108B019/18	18	28	60		P108B030/32	32	30	80
16	P108B013/18	18	28	37	22	P108B019/19	19	28	60	30	P108B030/35	35	30	80
	P108B013/19	19	28	37		P108B019/20	20	28	60		P108B030/38	38	30	80
	P108B013/20	20	28	37		P108B019/22	22	28	60					
	P108B013/22	22	28	37		P108B019/24	24	28	60					
17	P108B013/24	24	28	42	23	P108B019/25	25	28	60					
	P108B013/25	25	28	42		P108B019/28	28	28	60					
	P108B013/28	28	28	45Δ		P108B019/30	30	28	60					
	P108B014/12	12	28	41		P108B019/32	32	28	60					
18	P108B014/14	14	28	41	24	P108B019/35	35	28	60					
	P108B014/15	15	28	41		P108B020/16	16	28	64					
	P108B014/16	16	28	41		P108B020/18	18	28	64					
	P108B014/18	18	28	41		P108B020/19	19	28	64					
19	P108B014/19	19	28	41	25	P108B020/20	20	28	64					
	P108B014/20	20	28	41		P108B020/22	22	28	64					
	P108B014/22	22	28	41		P108B020/24	24	28	64					
	P108B014/24	24	28	41		P108B020/25	25	28	64					
20	P108B014/25	25	28	41	26	P108B020/28	28	28	64					
	P108B014/28	28	28	45		P108B020/30	30	28	64					
	P108B015/12	12	28	45		P108B020/32	32	28	64					
	P108B015/14	14	28	45		P108B020/35	35	28	64					
21	P108B015/15	15	28	45	27	P108B020/38	38	28	64					
	P108B015/16	16	28	45										
	P108B015/18	18	28	45										
	P108B015/19	19	28	45										
22	P108B015/20	20	28	45	28									
	P108B015/22	22	28	45										
	P108B015/24	24	28	45										
	P108B015/25	25	28	45										
23	P108B015/28	28	28	45	29									
	P108B015/30	30	28	47										
	P108B015/32	32	28	49										

Δ = grooved sprocket version



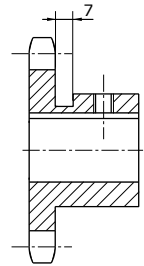
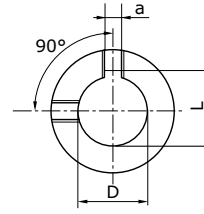
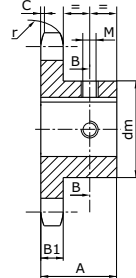
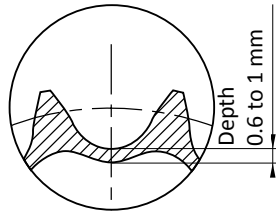
FINISHED SPROCKETS - READY TO USE - 10B

r 10
C 1
B1 9,10

PITCH : 5/8" x 3/8"
PITCH : 15,875 x 9,65 mm
MATERIAL : C45



Sprockets with flanged hub for simplex roller chains as per standards: DIN 8187 - ISO 606. Ready-to-use with finished H7 bore, JS9 keyway in a tooth axle, 2 grub screws at 90° and induction 45/53 HRC hardened teeth.



For dimensions a, L and M, see table page 103

Dimensions in mm

Z	Reference	D	A	dm	Z	Reference	D	A	dm	Z	Reference	D	A	dm	
10	P110B010/15	15	25	35	16	P110B016/19	19	30	60	21	P110B021/19	19	30	75	
	P110B010/16	16	25	35		P110B016/20	20	30	60		P110B021/20	20	30	75	
	P110B010/19	19	25	35		P110B016/22	22	30	60		P110B021/22	22	30	75	
	P110B010/20	20	25	35		P110B016/24	24	30	60		P110B021/24	24	30	75	
11	P110B011/24	24	25	42Δ	17	P110B016/25	25	30	60	22	P110B021/25	25	30	75	
	P110B011/15	15	30	37		P110B016/28	28	30	60		P110B021/28	28	30	75	
	P110B011/16	16	30	37		P110B016/30	30	30	60		P110B021/30	30	30	75	
	P110B011/18	18	30	37		P110B016/32	32	30	60		P110B021/32	32	30	75	
	P110B011/19	19	30	37		P110B016/35	35	30	60		P110B021/35	35	30	75	
	P110B011/20	20	30	37		P110B016/38	38	30	60		P110B021/38	38	30	75	
	P110B011/24	24	30	42		P110B017/19	19	30	60		P110B021/40	40	30	75	
	P110B011/25	25	30	42		P110B017/20	20	30	60		P110B021/42	42	30	75	
	P110B011/28	28	30	45		P110B017/22	22	30	60		23	P110B022/19	19	30	80
	P110B012/15	15	30	42		P110B017/24	24	30	60			P110B022/20	20	30	80
P110B012/16	16	30	42	P110B017/25	25	30	60	P110B022/22	22	30		80			
P110B012/18	18	30	42	P110B017/28	28	30	60	P110B022/24	24	30		80			
P110B012/19	19	30	42	P110B017/30	30	30	60	P110B022/25	25	30		80			
P110B012/20	20	30	42	P110B017/32	32	30	60	P110B022/28	28	30		80			
P110B012/22	22	30	42	P110B017/35	35	30	60	P110B022/30	30	30		80			
P110B012/24	24	30	42	P110B017/38	38	30	60	P110B022/32	32	30		80			
P110B012/25	25	30	44	P110B018/19	19	30	70	P110B022/35	35	30		80			
P110B012/28	28	30	47	P110B018/20	20	30	70	P110B022/38	38	30		80			
P110B012/30	30	30	49	P110B018/22	22	30	70	P110B022/40	40	30	80				
P110B012/32	32	30	51	P110B018/24	24	30	70	P110B022/42	42	30	80				
13	P110B013/15	15	30	47	18	P110B018/25	25	30	70	24	P110B023/19	19	30	80	
	P110B013/16	16	30	47		P110B018/28	28	30	70		P110B023/20	20	30	80	
	P110B013/18	18	30	47		P110B018/30	30	30	70		P110B023/22	22	30	80	
	P110B013/19	19	30	47		P110B018/32	32	30	70		P110B023/24	24	30	80	
	P110B013/20	20	30	47		P110B018/35	35	30	70		P110B023/25	25	30	80	
	P110B013/22	22	30	47		P110B018/38	38	30	70		P110B023/28	28	30	80	
	P110B013/24	24	30	47		P110B018/40	40	30	70		P110B023/30	30	30	80	
	P110B013/25	25	30	47		P110B018/42	42	30	70		P110B023/32	32	30	80	
	P110B013/28	28	30	47		P110B019/19	19	30	70		P110B023/35	35	30	80	
	P110B013/30	30	30	49		P110B019/20	20	30	70		P110B023/38	38	30	80	
P110B013/32	32	30	51	P110B019/22	22	30	70	P110B023/40	40	30	80				
14	P110B014/15	15	30	52	19	P110B019/24	24	30	70	25	P110B023/42	42	30	80	
	P110B014/16	16	30	52		P110B019/25	25	30	70		P110B024/19	19	30	80	
	P110B014/18	18	30	52		P110B019/28	28	30	70		P110B024/20	20	30	80	
	P110B014/19	19	30	52		P110B019/30	30	30	70		P110B024/22	22	30	80	
	P110B014/20	20	30	52		P110B019/32	32	30	70		P110B024/24	24	30	80	
	P110B014/22	22	30	52		P110B019/35	35	30	70		P110B024/25	25	30	80	
	P110B014/24	24	30	52		P110B019/38	38	30	70		P110B024/28	28	30	80	
	P110B014/25	25	30	52		P110B019/40	40	30	70		P110B024/30	30	30	80	
	P110B014/28	28	30	52		P110B019/42	42	30	70		P110B024/32	32	30	80	
	P110B014/30	30	30	52		P110B020/19	19	30	75		P110B024/35	35	30	80	
P110B014/32	32	30	52	P110B020/20	20	30	75	P110B024/38	38	30	80				
15	P110B015/19	19	30	57	20	P110B020/22	22	30	75	25	P110B024/40	40	30	80	
	P110B015/20	20	30	57		P110B020/24	24	30	75		P110B024/42	42	30	80	
	P110B015/22	22	30	57		P110B020/25	25	30	75		P110B025/19	19	30	80	
	P110B015/24	24	30	57		P110B020/28	28	30	75		P110B025/20	20	30	80	
	P110B015/25	25	30	57		P110B020/30	30	30	75		P110B025/22	22	30	80	
	P110B015/28	28	30	57		P110B020/32	32	30	75		P110B025/24	24	30	80	
	P110B015/30	30	30	57		P110B020/35	35	30	75		P110B025/25	25	30	80	
	P110B015/32	32	30	57		P110B020/38	38	30	75		P110B025/28	28	30	80	
	P110B015/35	35	30	57		P110B020/40	40	30	75		P110B025/30	30	30	80	
							P110B020/42	42	30		75	P110B025/32	32	30	80
									P110B025/35	35	30	80			
									P110B025/38	38	30	80			
									P110B025/40	40	30	80			
									P110B025/42	42	30	80			

Δ = grooved sprocket version

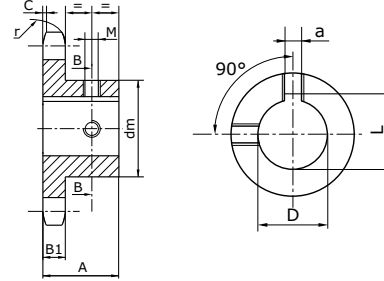
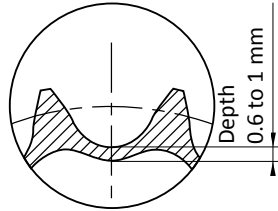
FINISHED SPROCKETS - READY TO USE - 12 B

r 19 C 2 B1 11,1

PITCH : 3/4" x 7/16"
 PITCH : 19,05 x 11,68 mm
 MATERIAL : C45



Sprockets with flanged hub for simplex roller chains as per standards: DIN 8187 - ISO 606. Ready-to-use with finished H7 bore, JS9 keyway in a tooth axle, 2 grub screws at 90° and induction 45/53 HRC hardened teeth.



For dimensions a, L and M, see table page 103

Dimensions in mm

Z	Reference	D	A	dm	Z	Reference	D	A	dm	Z	Reference	D	A	dm				
10	P112B010/19	19	30	42	16	P112B016/19	19	35	75	22	P112B022/25	25	40	90				
	P112B010/20	20	30	42		P112B016/20	20	35	75		P112B022/28	28	40	90				
	P112B010/24	24	30	42		P112B016/22	22	35	75		P112B022/30	30	40	90				
	P112B010/25	25	30	42		P112B016/24	24	35	75		P112B022/32	32	40	90				
	P112B010/28	28	30	45		P112B016/25	25	35	75		P112B022/35	35	40	90				
	P112B010/30	30	30	47		P112B016/28	28	35	75		P112B022/38	38	40	90				
11	P112B011/19	19	35	46	17	P112B016/30	30	35	75	23	P112B022/40	40	40	90				
	P112B011/20	20	35	46		P112B016/32	32	35	75		P112B022/42	42	40	90				
	P112B011/24	24	35	46		P112B016/35	35	35	75		P112B022/45	45	40	90				
	P112B011/25	25	35	46		P112B016/38	38	35	75		P112B022/48	48	40	90				
	P112B011/28	28	35	49		P112B016/40	40	35	75		P112B022/50	50	40	90				
	P112B011/30	30	35	51		P112B017/25	25	35	80		P112B023/25	25	40	90				
12	P112B012/19	19	35	52	18	P112B017/28	28	35	80	24	P112B023/28	28	40	90				
	P112B012/20	20	35	52		P112B017/30	30	35	80		P112B023/30	30	40	90				
	P112B012/22	22	35	52		P112B017/32	32	35	80		P112B023/32	32	40	90				
	P112B012/24	24	35	52		P112B017/35	35	35	80		P112B023/35	35	40	90				
	P112B012/25	25	35	52		P112B017/38	38	35	80		P112B023/38	38	40	90				
	P112B012/28	28	35	52		P112B017/40	40	35	80		P112B023/40	40	40	90				
13	P112B012/30	30	35	52	19	P112B017/42	42	35	80	25	P112B023/42	42	40	90				
	P112B012/32	32	35	53		P112B018/25	25	35	80		P112B023/45	45	40	90				
	P112B012/35	35	35	56		P112B018/28	28	35	80		P112B023/48	48	40	90				
	P112B013/19	19	35	58		P112B018/30	30	35	80		P112B023/50	50	40	90				
	P112B013/20	20	35	58		P112B018/32	32	35	80		P112B024/25	25	40	90				
	P112B013/22	22	35	58		P112B018/35	35	35	80		P112B024/28	28	40	90				
14	P112B013/24	24	35	58	20	P112B018/38	38	35	80	21	P112B024/30	30	40	90				
	P112B013/25	25	35	58		P112B018/40	40	35	80		P112B024/32	32	40	90				
	P112B013/28	28	35	58		P112B018/42	42	35	80		P112B024/35	35	40	90				
	P112B013/30	30	35	58		P112B019/25	25	35	80		P112B024/38	38	40	90				
	P112B013/32	32	35	58		P112B019/28	28	35	80		P112B024/40	40	40	90				
	P112B013/35	35	35	58		P112B019/30	30	35	80		P112B024/42	42	40	90				
15	P112B013/38	38	35	58	21	P112B019/32	32	35	80	22	P112B024/45	45	40	90				
	P112B014/19	19	35	64		P112B019/35	35	35	80		P112B024/48	48	40	90				
	P112B014/20	20	35	64		P112B019/38	38	35	80		P112B024/50	50	40	90				
	P112B014/22	22	35	64		P112B019/40	40	35	80		P112B025/25	25	40	90				
	P112B014/24	24	35	64		P112B019/42	42	35	80		P112B025/28	28	40	90				
	P112B014/25	25	35	64		P112B019/45	45	35	80		P112B025/30	30	40	90				
16	P112B014/28	28	35	64	22	P112B019/48	48	35	80	23	P112B025/32	32	40	90				
	P112B014/30	30	35	64		P112B019/50	50	35	80		P112B025/35	35	40	90				
	P112B014/32	32	35	64		P112B020/25	25	35	80		P112B025/38	38	40	90				
	P112B014/35	35	35	64		P112B020/28	28	35	80		P112B025/40	40	40	90				
	P112B014/38	38	35	64		P112B020/30	30	35	80		P112B025/42	42	40	90				
	P112B014/40	40	35	67		P112B020/32	32	35	80		P112B025/45	45	40	90				
17	P112B015/19	19	35	70	23	P112B020/35	35	35	80	24	P112B025/48	48	40	90				
	P112B015/20	20	35	70		P112B020/38	38	35	80		25	P112B025/50	50	40	90			
	P112B015/22	22	35	70		P112B020/40	40	35	80			26						
	P112B015/24	24	35	70		P112B020/42	42	35	80				27					
	P112B015/25	25	35	70		P112B020/45	45	35	80					28				
	P112B015/28	28	35	70		P112B020/48	48	35	80						29			
18	P112B015/30	30	35	70	P112B020/50	50	35	80	30									
	P112B015/32	32	35	70	P112B021/25	25	40	90		31								
	P112B015/35	35	35	70	P112B021/28	28	40	90			32							
	P112B015/38	38	35	70	P112B021/30	30	40	90				33						
	P112B015/40	40	35	70	P112B021/32	32	40	90					34					
					P112B021/35	35	40	90						35				
19					P112B021/38	38	40	90	36									
					P112B021/40	40	40	90		37								
					P112B021/42	42	40	90			38							
					P112B021/45	45	40	90				39						
					P112B021/48	48	40	90					40					
					P112B021/50	50	40	90										



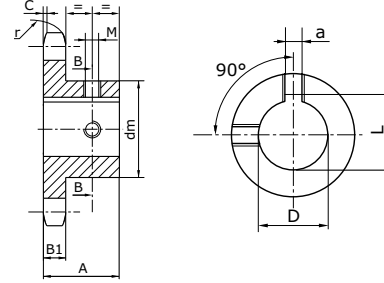
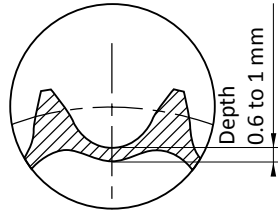
FINISHED SPROCKETS - READY TO USE - 16B

r 26
C 2,5
B1 16,2

PITCH : 1" x 17,02 mm
PITCH : 25,4 x 17,02 mm
MATERIAL : C45



Sprockets with flanged hub for simplex roller chains as per standards: DIN 8187 - ISO 606. Ready-to-use with finished H7 bore, JS9 keyway in a tooth axle, 2 grub screws at 90° and induction 45/53 HRC hardened teeth.



For dimensions a, L and M, see table page 103

Dimensions in mm

Z	Reference	D	A	dm	Z	Reference	D	A	dm	Z	Reference	D	A	dm
11	P116B011/25	25	40	61	17	P116B017/25	25	45	100	22	P116B022/25	25	50	110
	P116B011/28	28	40	61		P116B017/28	28	45	100		P116B022/28	28	50	110
	P116B011/30	30	40	61		P116B017/30	30	45	100		P116B022/30	30	50	110
	P116B011/32	32	40	61		P116B017/32	32	45	100		P116B022/32	32	50	110
	P116B011/35	35	40	61		P116B017/35	35	45	100		P116B022/35	35	50	110
	P116B011/38	38	40	65		P116B017/38	38	45	100		P116B022/38	38	50	110
	P116B011/40	40	40	67		P116B017/40	40	45	100		P116B022/40	40	50	110
12	P116B012/25	25	40	69	P116B017/42	42	45	100	P116B022/42	42	50	110		
	P116B012/28	28	40	69	P116B017/45	45	45	100	P116B022/45	45	50	110		
	P116B012/30	30	40	69	P116B017/48	48	45	100	P116B022/48	48	50	110		
	P116B012/32	32	40	69	P116B017/50	50	45	100	P116B022/50	50	50	110		
	P116B012/35	35	40	69	P116B018/25	25	45	100	P116B023/25	25	50	110		
	P116B012/38	38	40	69	P116B018/28	28	45	100	P116B023/28	28	50	110		
	P116B012/40	40	40	69	P116B018/30	30	45	100	P116B023/30	30	50	110		
13	P116B013/25	25	40	78	P116B018/32	32	45	100	P116B023/32	32	50	110		
	P116B013/28	28	40	78	P116B018/35	35	45	100	P116B023/35	35	50	110		
	P116B013/30	30	40	78	P116B018/38	38	45	100	P116B023/38	38	50	110		
	P116B013/32	32	40	78	P116B018/40	40	45	100	P116B023/40	40	50	110		
	P116B013/35	35	40	78	P116B018/42	42	45	100	P116B023/42	42	50	110		
	P116B013/38	38	40	78	P116B018/45	45	45	100	P116B023/45	45	50	110		
	P116B013/40	40	40	78	P116B018/48	48	45	100	P116B023/48	48	50	110		
14	P116B013/42	42	40	78	P116B018/50	50	45	100	P116B023/50	50	50	110		
	P116B013/45	45	40	78	P116B019/25	25	45	100	P116B024/25	25	50	110		
	P116B013/48	48	40	78	P116B019/28	28	45	100	P116B024/28	28	50	110		
	P116B013/50	50	40	82	P116B019/30	30	45	100	P116B024/30	30	50	110		
	P116B014/25	25	40	84	P116B019/32	32	45	100	P116B024/32	32	50	110		
	P116B014/28	28	40	84	P116B019/35	35	45	100	P116B024/35	35	50	110		
	P116B014/30	30	40	84	P116B019/38	38	45	100	P116B024/38	38	50	110		
15	P116B014/32	32	40	84	P116B019/40	40	45	100	P116B024/40	40	50	110		
	P116B014/35	35	40	84	P116B019/42	42	45	100	P116B024/42	42	50	110		
	P116B014/38	38	40	84	P116B019/45	45	45	100	P116B024/45	45	50	110		
	P116B014/40	40	40	84	P116B019/48	48	45	100	P116B024/48	48	50	110		
	P116B014/42	42	40	84	P116B019/50	50	45	100	P116B024/50	50	50	110		
	P116B014/45	45	40	84	P116B020/25	25	45	100	P116B025/25	25	50	110		
	P116B014/48	48	40	84	P116B020/28	28	45	100	P116B025/28	28	50	110		
16	P116B014/50	50	40	84	P116B020/30	30	45	100	P116B025/30	30	50	110		
	P116B015/25	25	40	92	P116B020/32	32	45	100	P116B025/32	32	50	110		
	P116B015/28	28	40	92	P116B020/35	35	45	100	P116B025/35	35	50	110		
	P116B015/30	30	40	92	P116B020/38	38	45	100	P116B025/38	38	50	110		
	P116B015/32	32	40	92	P116B020/40	40	45	100	P116B025/40	40	50	110		
	P116B015/35	35	40	92	P116B020/42	42	45	100	P116B025/42	42	50	110		
	P116B015/38	38	40	92	P116B020/45	45	45	100	P116B025/45	45	50	110		
17	P116B015/40	40	40	92	P116B020/48	48	45	100	P116B025/48	48	50	110		
	P116B015/42	42	40	92	P116B020/50	50	45	100	P116B025/50	50	50	110		
	P116B015/45	45	40	92	P116B021/25	25	50	110						
	P116B015/48	48	40	92	P116B021/28	28	50	110						
	P116B015/50	50	40	92	P116B021/30	30	50	110						
	P116B016/25	25	45	100	P116B021/32	32	50	110						
	P116B016/28	28	45	100	P116B021/35	35	50	110						
18	P116B016/30	30	45	100	P116B021/38	38	50	110						
	P116B016/32	32	45	100	P116B021/40	40	50	110						
	P116B016/35	35	45	100	P116B021/42	42	50	110						
	P116B016/38	38	45	100	P116B021/45	45	50	110						
	P116B016/40	40	45	100	P116B021/48	48	50	110						
	P116B016/42	42	45	100	P116B021/50	50	50	110						
	P116B016/45	45	45	100										

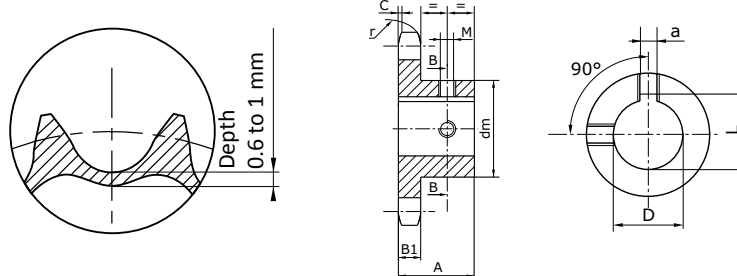
FINISHED SPROCKETS - READY TO USE - 20B

r 32
C 3,5
B1 18,5

PITCH : 1"1/4" x 3/14"
PITCH : 31,75 x 19,56 mm
MATERIAL : C45



Sprockets with flanged hub for simplex roller chains as per standards: DIN 8187 - ISO 606. Ready-to-use with finished H7 bore, JS9 keyway in a tooth axle, 2 grub screws at 90° and induction 45/53 HRC hardened teeth.



For dimensions a, L and M, see table page 103

Dimensions in mm

Z	Reference	D	A	dm
9	P120B009/25	25	40	63
	P120B009/30	30	40	63
	P120B009/32	32	40	63
	P120B009/35	35	40	63
	P120B009/38	38	40	63
10	P120B010/25	25	40	70
	P120B010/30	30	40	70
	P120B010/32	32	40	70
	P120B010/35	35	40	70
	P120B010/38	38	40	70
11	P120B011/25	25	45	77
	P120B011/28	28	45	77
	P120B011/30	30	45	77
	P120B011/32	32	45	77
	P120B011/34	34	45	77
	P120B011/35	35	45	77
	P120B011/38	38	45	77
	P120B011/40	40	45	77
	P120B011/42	42	45	77
	P120B011/45	45	45	77
12	P120B011/50	50	45	82
	P120B011/60	60	45	93
	P120B012/25	25	45	88
	P120B012/28	28	45	88
	P120B012/30	30	45	88
	P120B012/32	32	45	88
	P120B012/35	35	45	88
	P120B012/38	38	45	88
	P120B012/40	40	45	88
	P120B012/42	42	45	88
13	P120B012/45	45	45	88
	P120B012/48	48	45	88
	P120B012/50	50	45	88
	P120B012/60	60	45	93
	P120B013/25	25	45	98
	P120B013/28	28	45	98
	P120B013/30	30	45	98
	P120B013/32	32	45	98
	P120B013/35	35	45	98
	P120B013/38	38	45	98
13	P120B013/40	40	45	98
	P120B013/42	42	45	98
	P120B013/45	45	45	98
	P120B013/48	48	45	98
	P120B013/50	50	45	98
	P120B013/60	60	45	98

Z	Reference	D	A	dm
14	P120B014/32	32	45	108
	P120B014/35	35	45	108
	P120B014/38	38	45	108
	P120B014/40	40	45	108
	P120B014/42	42	45	108
	P120B014/45	45	45	108
	P120B014/48	48	45	108
	P120B014/50	50	45	108
	P120B014/60	60	45	108
	P120B014/70	70	45	108
15	P120B015/32	32	45	118
	P120B015/35	35	45	118
	P120B015/38	38	45	118
	P120B015/40	40	45	118
	P120B015/42	42	45	118
	P120B015/45	45	45	118
	P120B015/48	48	45	118
	P120B015/50	50	45	118
	P120B015/60	60	45	118
	16	P120B016/38	38	50
P120B016/40		40	50	120
P120B016/42		42	50	120
P120B016/45		45	50	120
P120B016/48		48	50	120
P120B016/50		50	50	120
P120B016/60		60	50	120
P120B016/65		65	50	120
P120B016/70		70	50	120
17		P120B017/25	25	50
	P120B017/28	28	50	120
	P120B017/30	30	50	120
	P120B017/32	32	50	120
	P120B017/35	35	50	120
	P120B017/38	38	50	120
	P120B017/40	40	50	120
	P120B017/42	42	50	120
	P120B017/45	45	50	120
	P120B017/48	48	50	120
17	P120B017/50	50	50	120
	P120B017/60	60	50	120
	P120B017/65	65	50	120
	P120B017/70	70	50	120

Z	Reference	D	A	dm
18	P120B018/38	38	50	120
	P120B018/40	40	50	120
	P120B018/42	42	50	120
	P120B018/45	45	50	120
	P120B018/48	48	50	120
	P120B018/50	50	50	120
	P120B018/60	60	50	120
	P120B018/65	65	50	120
	P120B018/70	70	50	120
	19	P120B019/38	38	50
P120B019/40		40	50	120
P120B019/42		42	50	120
P120B019/45		45	50	120
P120B019/48		48	50	120
P120B019/50		50	50	120
P120B019/60		60	50	120
P120B019/65		65	50	120
P120B019/70		70	50	120
20		P120B020/38	38	50
	P120B020/40	40	50	120
	P120B020/42	42	50	120
	P120B020/45	45	50	120
	P120B020/48	48	50	120
	P120B020/50	50	50	120
	P120B020/60	60	50	120
	P120B020/65	65	50	120
	P120B020/70	70	50	120

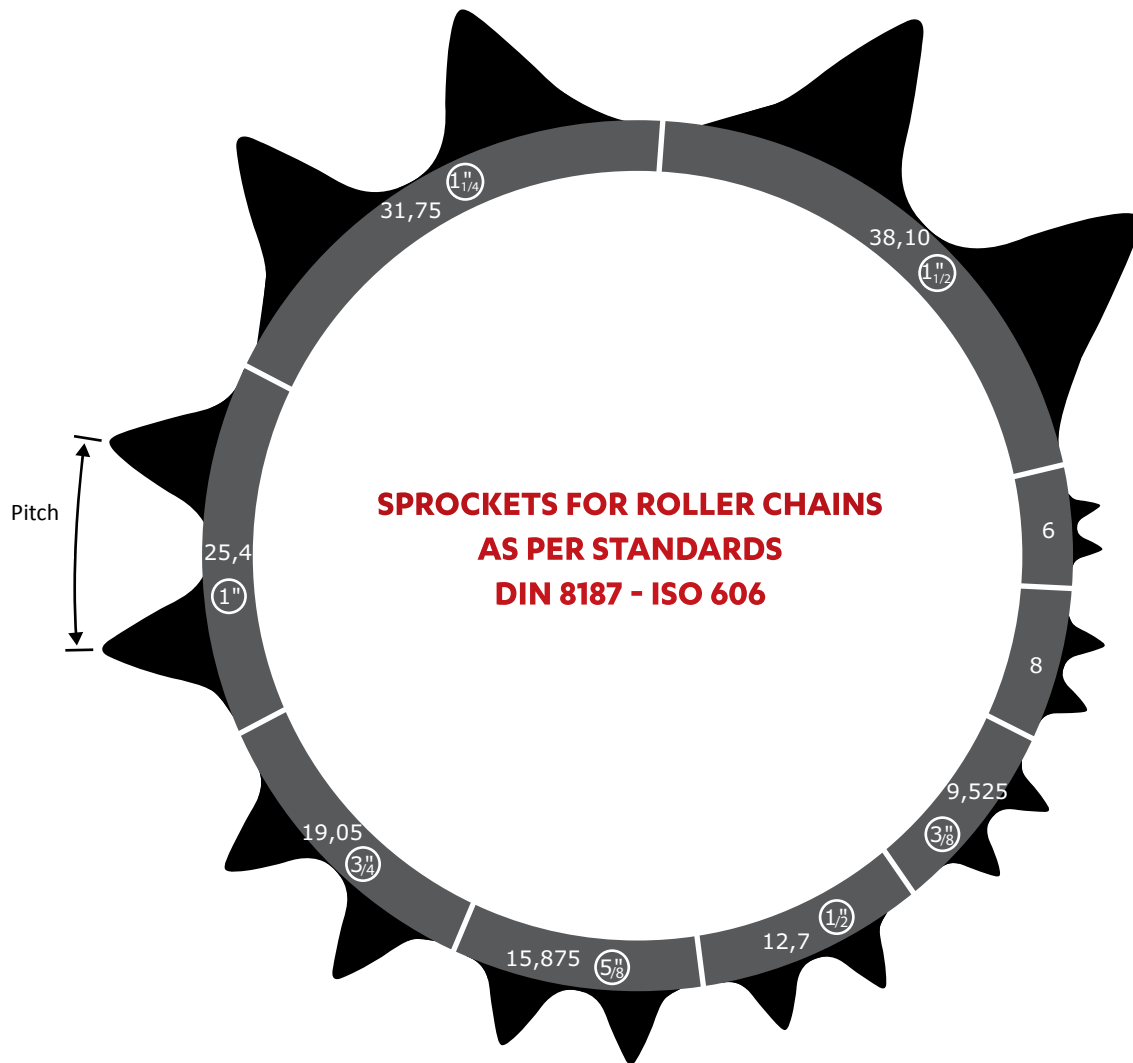


TECHNICAL INFORMATION - TEETH AT SCALE 1/1 - 100%

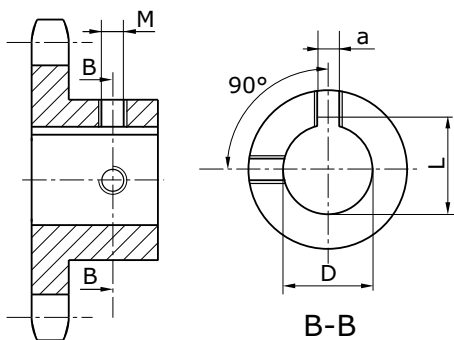
Definition of the maximum bore diameter \varnothing depending on the bush diameter \varnothing (dm) :

For steel : max \varnothing = dm x 0,7

For cast iron : max \varnothing = dm x 0,6



KEYWAYS DIMENSIONAL CHARACTERISTICS



D (H7)	a	L	M	D (H7)	a	L	M
10	4	D + 1,8 (+0,1/0)	M3	30	8	D + 3,3 (+0,2/0)	M6
11	4	D + 1,8 (+0,1/0)	M3	32	10	D + 3,3 (+0,2/0)	M8
12	4	D + 1,8 (+0,1/0)	M3	35	10	D + 3,3 (+0,2/0)	M8
14	5	D + 2,3 (+0,1/0)	M4	38	10	D + 3,3 (+0,2/0)	M8
16	5	D + 2,3 (+0,1/0)	M4	40	12	D + 3,3 (+0,2/0)	M10
18	6	D + 2,8 (+0,1/0)	M5	42	12	D + 3,3 (+0,2/0)	M10
19	6	D + 2,8 (+0,1/0)	M5	45	14	D + 3,8 (+0,2/0)	M12
20	6	D + 2,8 (+0,1/0)	M5	48	14	D + 3,8 (+0,2/0)	M12
22	6	D + 2,8 (+0,1/0)	M5	50	14	D + 3,8 (+0,2/0)	M12
24	8	D + 3,3 (+0,2/0)	M6	60	18	D + 4,4 (+0,2/0)	M12
25	8	D + 3,3 (+0,2/0)	M6	65	18	D + 4,4 (+0,2/0)	M12
28	8	D + 3,3 (+0,2/0)	M6	70	20	D + 4,9 (+0,2/0)	M12