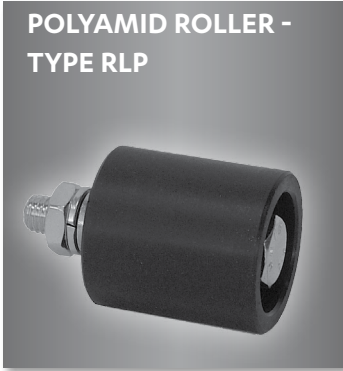
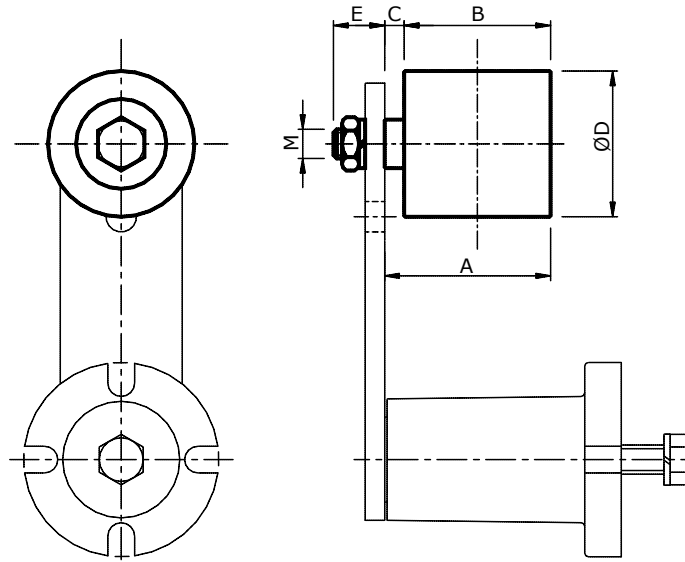



ROLLERS : TYPE RLP & RLA ACCESSORIES
**POLYAMID ROLLER -
TYPE RLP**


Roller installed on self-lubricated bearings, suitable to tension the belts.

Maximum operating temperature : 70°C for polyamid rollers
Maximum operating temperature : 100°C for galvanized rollers

The kits are supplied with galvanized bolts and screws.

**GALVANIZED ROLLER -
TYPE RLA**


Polyamid roller			Galvanized roller			A	B	C	ØD	E	max speed [rpm]	Size
Reference	M	Kg	Reference	M	Kg							
RLP 30	M8	0.08	RLA 30	M8	0.16	38	35	3	30	13	8000	11
RLP 40	M10	0.18	RLA 40	M10	0.37	51	45	6	40	16	8000	15-18
RLP 60	M12	0.40	RLA 60	M16	0.85	68	60	8	60	21	6000	27
RLP 80	M20	1.20	RLA 80	M20	2.09	99	90	9	80	28	5000	38
RLP 90	M20	1.70	RLA 90	M20	2.44	142	135	7	90	27	4500	45