



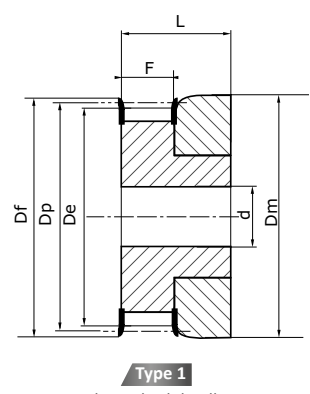
Dimensions in mm

SOLID BUSH TIMING PULLEYS - T2,5 / T5

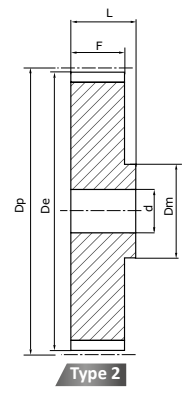
T2,5 - PITCH : 2,5 mm
 T5 - PITCH : 5 mm
 MATERIAL : Aluminum
 6082T6 UNI 9006/4



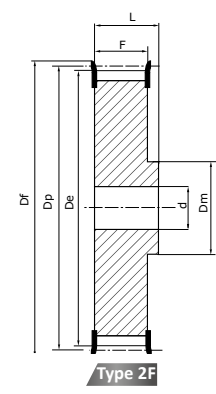
Timing pulleys for metric pitch belts



Type 1
Flanged solid pulley



Type 2
Solid pulley not flanged



Type 2F
Flanged solid pulley

| Reference | Z | Dp | De | Df | Flange N° | Dm | T2,5 for belt with 6 mm width | | | | |
|-----------------|----|-------|-------|------|-----------|----|----------------------------------|----|---|------|-------|
| | | | | | | | L | F | d | Type | Kg |
| 16 T2,5 12 F MP | 12 | 9,60 | 9,00 | 13 | F01 | 13 | 16 | 9 | 4 | 1F | 0,004 |
| 16 T2,5 14 F MP | 14 | 11,20 | 10,60 | 15 | F02 | 15 | 16 | 9 | 4 | 1F | 0,006 |
| 16 T2,5 15 F MP | 15 | 12,00 | 11,40 | 15 | F02 | 15 | 16 | 9 | 4 | 1F | 0,006 |
| 16 T2,5 16 F MP | 16 | 12,80 | 12,20 | 16 | F03 | 16 | 16 | 9 | 4 | 1F | 0,006 |
| 16 T2,5 18 F MP | 18 | 14,40 | 13,80 | 17,5 | F04 | 10 | 16 | 10 | 4 | 1F | 0,006 |
| 16 T2,5 19 F MP | 19 | 15,20 | 14,60 | 18 | F05 | 10 | 16 | 10 | 4 | 2F | 0,007 |
| 16 T2,5 20 F MP | 20 | 16,00 | 15,40 | 20 | F06 | 11 | 16 | 10 | 4 | 2F | 0,008 |
| 16 T2,5 22 F MP | 22 | 17,60 | 17,00 | 23 | F07 | 11 | 16 | 10 | 4 | 2F | 0,010 |
| 16 T2,5 24 F MP | 24 | 19,15 | 18,55 | 23 | F07 | 12 | 16 | 10 | 4 | 2F | 0,012 |
| 16 T2,5 25 F MP | 25 | 19,95 | 19,35 | 23 | F07 | 13 | 16 | 10 | 4 | 2F | 0,013 |
| 16 T2,5 26 F MP | 26 | 20,75 | 20,15 | 25 | F09 | 14 | 16 | 10 | 4 | 2F | 0,015 |
| 16 T2,5 28 F MP | 28 | 22,35 | 21,75 | 25 | F09 | 14 | 16 | 10 | 4 | 2F | 0,016 |
| 16 T2,5 30 F MP | 30 | 23,95 | 23,35 | 28 | F09 | 16 | 16 | 10 | 6 | 2F | 0,018 |
| 16 T2,5 32 F MP | 32 | 25,95 | 24,95 | 32 | F10 | 16 | 16 | 10 | 6 | 2F | 0,020 |
| 16 T2,5 36 F MP | 36 | 28,75 | 28,10 | 36 | F12 | 20 | 16 | 10 | 6 | 2F | 0,026 |
| 16 T2,5 40 F MP | 40 | 31,90 | 31,30 | 38 | F14 | 22 | 16 | 10 | 6 | 2F | 0,032 |
| 16 T2,5 44 MP | 44 | 35,10 | 34,50 | - | - | 24 | 16 | 10 | 6 | 2 | 0,038 |
| 16 T2,5 48 MP | 48 | 38,30 | 37,70 | - | - | 26 | 16 | 10 | 6 | 2 | 0,048 |
| 16 T2,5 60 MP | 60 | 47,85 | 47,25 | - | - | 34 | 16 | 10 | 8 | 2 | 0,073 |

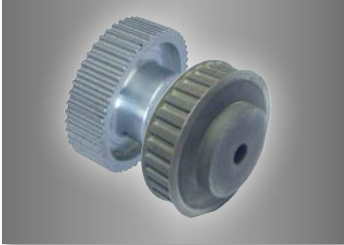
| Reference | Z | Dp | De | Df | Flange N° | Dm | 21 T5 for belt with 10 mm width (F=15) | | | | 27 T5 for belt with 16 mm width (F=21) | | | | 36 T5 for belt with 25 mm width (F=30) | | | |
|--------------|----|-------|-------|----|-----------|----|--|---|------|-------|--|---|------|-------|--|---|------|-------|
| | | | | | | | L | d | Type | Kg | L | d | Type | Kg | L | d | Type | Kg |
| .. T5 10 FMP | 10 | 16,05 | 15,05 | 20 | F06 | 8 | 21 | 4 | 2F | 0,012 | 27 | 4 | 2F | 0,016 | 36 | 4 | 2F | 0,023 |
| .. T5 12 FMP | 12 | 19,25 | 18,25 | 23 | F07 | 11 | 21 | 4 | 2F | 0,016 | 27 | 4 | 2F | 0,022 | 36 | 4 | 2F | 0,031 |
| .. T5 14 FMP | 14 | 22,45 | 21,45 | 25 | F08 | 13 | 21 | 4 | 2F | 0,019 | 27 | 4 | 2F | 0,026 | 36 | 4 | 2F | 0,037 |
| .. T5 15 FMP | 15 | 24,05 | 23,05 | 28 | F09 | 16 | 21 | 6 | 2F | 0,021 | 27 | 6 | 2F | 0,029 | 36 | 6 | 2F | 0,041 |
| .. T5 16 FMP | 16 | 25,06 | 24,60 | 32 | F10 | 18 | 21 | 6 | 2F | 0,025 | 27 | 6 | 2F | 0,035 | 36 | 6 | 2F | 0,050 |
| .. T5 18 FMP | 18 | 28,80 | 27,80 | 32 | F10 | 20 | 21 | 6 | 2F | 0,031 | 27 | 6 | 2F | 0,043 | 36 | 6 | 2F | 0,061 |
| .. T5 19 FMP | 19 | 30,40 | 29,40 | 36 | F12 | 22 | 21 | 6 | 2F | 0,036 | 27 | 6 | 2F | 0,049 | 36 | 6 | 2F | 0,070 |
| .. T5 20 FMP | 20 | 32,00 | 31,00 | 36 | F12 | 23 | 21 | 6 | 2F | 0,038 | 27 | 6 | 2F | 0,053 | 36 | 6 | 2F | 0,076 |
| .. T5 22 FMP | 22 | 35,15 | 34,15 | 38 | F14 | 24 | 21 | 6 | 2F | 0,054 | 27 | 6 | 2F | 0,062 | 36 | 6 | 2F | 0,092 |
| .. T5 24 FMP | 24 | 38,40 | 37,40 | 42 | F15 | 26 | 21 | 6 | 2F | 0,056 | 27 | 6 | 2F | 0,076 | 36 | 6 | 2F | 0,109 |
| .. T5 25 FMP | 25 | 39,95 | 38,95 | 44 | F17 | 26 | 21 | 6 | 2F | 0,058 | 27 | 6 | 2F | 0,081 | 36 | 6 | 2F | 0,116 |
| .. T5 26 FMP | 26 | 41,60 | 40,60 | 44 | F17 | 26 | 21 | 6 | 2F | 0,064 | 27 | 6 | 2F | 0,085 | 36 | 6 | 2F | 0,121 |
| .. T5 27 FMP | 27 | 43,20 | 42,20 | 48 | F18 | 30 | 21 | 8 | 2F | 0,070 | 27 | 8 | 2F | 0,090 | 36 | 8 | 2F | 0,128 |
| .. T5 28 FMP | 28 | 44,75 | 43,75 | 48 | F18 | 32 | 21 | 8 | 2F | 0,075 | 27 | 8 | 2F | 0,095 | 36 | 8 | 2F | 0,142 |
| .. T5 30 FMP | 30 | 47,95 | 46,95 | 51 | F19 | 34 | 21 | 8 | 2F | 0,081 | 27 | 8 | 2F | 0,105 | 36 | 8 | 2F | 0,150 |
| .. T5 32 FMP | 32 | 51,10 | 50,10 | 54 | F20 | 38 | 21 | 8 | 2F | 0,088 | 27 | 8 | 2F | 0,123 | 36 | 8 | 2F | 0,176 |
| .. T5 36 FMP | 36 | 57,45 | 56,45 | 64 | F24 | 38 | 21 | 8 | 2F | 0,114 | 27 | 8 | 2F | 0,160 | 36 | 8 | 2F | 0,230 |
| .. T5 40 FMP | 40 | 63,85 | 62,85 | 66 | F25 | 40 | 21 | 8 | 2F | 0,138 | 27 | 8 | 2F | 0,193 | 36 | 8 | 2F | 0,276 |
| .. T5 42 FMP | 42 | 67,00 | 66,00 | 70 | F26 | 40 | 21 | 8 | 2F | 0,165 | 27 | 8 | 2F | 0,245 | 36 | 8 | 2F | 0,352 |
| .. T5 44 MP | 44 | 70,20 | 69,20 | - | - | 45 | 21 | 8 | 2 | 2,000 | 27 | 8 | 2 | 0,280 | 36 | 8 | 2 | 0,400 |
| .. T5 48 MP | 48 | 76,55 | 75,55 | - | - | 50 | 21 | 8 | 2 | 0,307 | 27 | 8 | 2 | 0,430 | 36 | 8 | 2 | 0,614 |
| .. T5 60 MP | 60 | 95,65 | 94,65 | - | - | 65 | 21 | 8 | 2 | 0,480 | 27 | 8 | 2 | 0,676 | 36 | 8 | 2 | 0,966 |

.. Pulley type

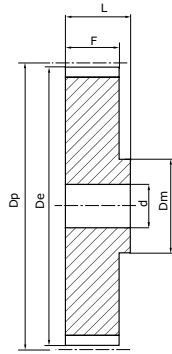


SOLID BUSH TIMING PULLEYS - T10

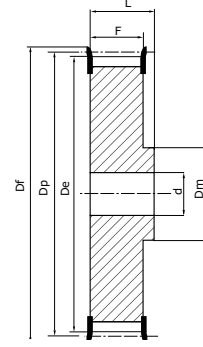
PITCH : 10 mm
MATERIAL : Aluminum
6082T6 UNI 9006/4



Timing pulleys for metric pitch belts



Type 2
Solid pulley not flanged



Type 2F
Flanged solid pulley

| Reference | Z | Dp | De | Df | Flange N° | Dm | 31 T10 for belt with 16 mm width (F=21) | | | | 40 T10 for belt with 25 mm width (F=30) | | | |
|---------------|----|--------|--------|-----|-----------|-----|--|----|------|-------|--|----|------|-------|
| | | | | | | | L | d | Type | Kg | L | d | Type | Kg |
| .. T10 12 FMP | 12 | 38,35 | 36,35 | 42 | F15 | 28 | 31 | 6 | 2F | 0,076 | 40 | 6 | 2F | 0,099 |
| .. T10 14 FMP | 14 | 44,70 | 42,70 | 48 | F18 | 32 | 31 | 8 | 2F | 0,104 | 40 | 8 | 2F | 0,134 |
| .. T10 15 FMP | 15 | 47,90 | 45,90 | 51 | F19 | 32 | 31 | 8 | 2F | 0,116 | 40 | 8 | 2F | 0,152 |
| .. T10 16 FMP | 16 | 51,10 | 49,10 | 54 | F20 | 35 | 31 | 8 | 2F | 0,134 | 40 | 8 | 2F | 0,176 |
| .. T10 18 FMP | 18 | 57,45 | 55,45 | 60 | F22 | 40 | 31 | 8 | 2F | 0,167 | 40 | 8 | 2F | 0,224 |
| .. T10 19 FMP | 19 | 60,65 | 58,65 | 66 | F25 | 44 | 31 | 8 | 2F | 0,184 | 40 | 8 | 2F | 0,247 |
| .. T10 20 FMP | 20 | 63,80 | 61,80 | 66 | F25 | 46 | 31 | 8 | 2F | 0,208 | 40 | 8 | 2F | 0,276 |
| .. T10 22 FMP | 22 | 70,20 | 68,20 | 75 | F27 | 52 | 31 | 8 | 2F | 0,240 | 40 | 8 | 2F | 0,310 |
| .. T10 24 FMP | 24 | 76,55 | 74,55 | 83 | F29 | 58 | 31 | 8 | 2F | 0,288 | 40 | 8 | 2F | 0,392 |
| .. T10 25 FMP | 25 | 79,75 | 77,70 | 83 | F29 | 60 | 31 | 8 | 2F | 0,295 | 40 | 8 | 2F | 0,422 |
| .. T10 26 FMP | 26 | 82,90 | 80,90 | 87 | F30 | 60 | 31 | 8 | 2F | 0,310 | 40 | 8 | 2F | 0,480 |
| .. T10 27 FMP | 27 | 86,10 | 84,10 | 91 | F31 | 60 | 31 | 8 | 2F | 0,364 | 40 | 8 | 2F | 0,536 |
| .. T10 28 FMP | 28 | 89,25 | 87,25 | 93 | F32 | 60 | 31 | 8 | 2F | 0,441 | 40 | 8 | 2F | 0,590 |
| .. T10 30 FMP | 30 | 95,65 | 93,65 | 97 | F33 | 60 | 31 | 8 | 2F | 0,493 | 40 | 8 | 2F | 0,640 |
| .. T10 32 FMP | 32 | 102,00 | 100,00 | 106 | F35 | 65 | 31 | 10 | 2F | 0,623 | 40 | 10 | 2F | 0,693 |
| .. T10 36 FMP | 36 | 114,75 | 112,75 | 120 | F38 | 70 | 31 | 10 | 2F | 0,767 | 40 | 10 | 2F | 0,873 |
| .. T10 40 FMP | 40 | 127,45 | 125,45 | 131 | F41 | 80 | 31 | 10 | 2F | 0,950 | 40 | 10 | 2F | 1,067 |
| .. T10 44 MP | 44 | 140,20 | 138,20 | - | - | 88 | 31 | 10 | 2 | 1,090 | 40 | 10 | 2 | 1,310 |
| .. T10 48 MP | 48 | 152,95 | 150,95 | - | - | 95 | 31 | 16 | 2 | 1,704 | 40 | 16 | 2 | 1,516 |
| .. T10 60 MP | 60 | 191,10 | 189,10 | - | - | 110 | 31 | 16 | 2 | 1,704 | 40 | 16 | 2 | 2,339 |

.. Pulley type

| Reference | Z | Dp | De | Df | Flange N° | Dm | 47 T10 for belt with 32 mm width (F=37) | | | | 66 T10 for belt with 50 mm width (F=56) | | | |
|---------------|----|--------|--------|-----|-----------|-----|---|----|------|-------|---|----|------|-------|
| | | | | | | | L | d | Type | Kg | L | d | Type | Kg |
| .. T10 18 FMP | 18 | 57,45 | 55,45 | 60 | F22 | 40 | 47 | 10 | 2F | 0,253 | 66 | 10 | 2F | 0,422 |
| .. T10 19 FMP | 19 | 60,65 | 58,65 | 66 | F25 | 44 | 47 | 10 | 2F | 0,286 | 66 | 10 | 2F | 0,466 |
| .. T10 20 FMP | 20 | 63,80 | 61,80 | 66 | F25 | 46 | 47 | 12 | 2F | 0,322 | 66 | 12 | 2F | 0,520 |
| .. T10 22 FMP | 22 | 70,20 | 68,20 | 75 | F27 | 52 | 47 | 12 | 2F | 0,393 | 66 | 12 | 2F | 0,640 |
| .. T10 24 FMP | 24 | 76,55 | 74,55 | 83 | F29 | 58 | 47 | 12 | 2F | 0,475 | 66 | 12 | 2F | 0,736 |
| .. T10 25 FMP | 25 | 79,75 | 77,70 | 83 | F29 | 60 | 47 | 12 | 2F | 0,527 | 66 | 12 | 2F | 0,766 |
| .. T10 26 FMP | 26 | 82,90 | 80,90 | 87 | F30 | 60 | 47 | 12 | 2F | 0,564 | 66 | 12 | 2F | 0,845 |
| .. T10 27 FMP | 27 | 86,10 | 84,10 | 91 | F31 | 60 | 47 | 12 | 2F | 0,602 | 66 | 12 | 2F | 0,946 |
| .. T10 28 FMP | 28 | 89,25 | 87,25 | 93 | F32 | 60 | 47 | 12 | 2F | 0,642 | 66 | 12 | 2F | 0,110 |
| .. T10 30 FMP | 30 | 95,65 | 93,65 | 97 | F33 | 60 | 47 | 12 | 2F | 0,740 | 66 | 12 | 2F | 1,169 |
| .. T10 32 FMP | 32 | 102,00 | 100,00 | 106 | F35 | 65 | 47 | 12 | 2F | 0,844 | 66 | 12 | 2F | 1,300 |
| .. T10 36 FMP | 36 | 114,75 | 112,75 | 120 | F38 | 70 | 47 | 16 | 2F | 1,063 | 66 | 16 | 2F | 1,637 |
| .. T10 40 FMP | 40 | 127,45 | 125,45 | 131 | F41 | 80 | 47 | 16 | 2F | 1,371 | 66 | 16 | 2F | 1,999 |
| .. T10 44 MP | 44 | 140,20 | 138,20 | - | - | 88 | 47 | 16 | 2 | 1,611 | 66 | 16 | 2 | 2,420 |
| .. T10 48 MP | 48 | 152,95 | 150,95 | - | - | 95 | 47 | 16 | 2 | 1,913 | 66 | 16 | 2 | 2,830 |
| .. T10 60 MP | 60 | 191,10 | 189,10 | - | - | 110 | 47 | 16 | 2 | 3,004 | 66 | 16 | 2 | 4,366 |

.. Pulley type

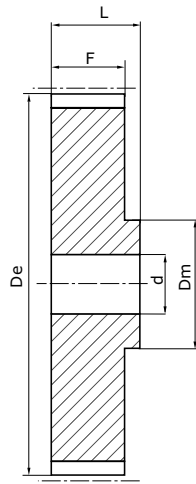


SOLID BUSH TIMING PULLEYS - ST5 «AT» belts

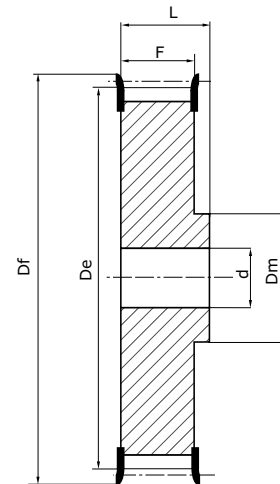
PITCH : 5 mm
MATERIAL : Aluminum
6082T6 UNI 9006/4



Timing pulleys for metric pitch belts



Type 2
Solid pulley not flanged



Type 2F
Flanged solid pulley

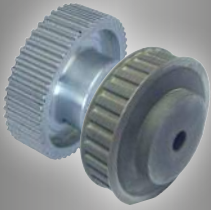
| Reference | Z | De | Df | Flange N° | Dm | 21 ST5 for belt with 10 mm width (F=15) | | | | 27 ST5 for belt with 16 mm width (F=21) | | | | 36 ST5 for belt with 25 mm width (F=30) | | | |
|---------------|----|-------|----|-----------|----|---|---|------|-------|---|---|------|-------|---|---|------|-------|
| | | | | | | L | d | Type | Kg | L | d | Type | Kg | L | d | Type | Kg |
| .. ST5 12 FMP | 12 | 17,85 | 23 | F07 | 11 | 21 | 4 | 2F | 0,018 | 27 | 4 | 2F | 0,022 | 36 | 4 | 2F | 0,031 |
| .. ST5 14 FMP | 14 | 21,05 | 25 | F08 | 14 | 21 | 4 | 2F | 0,019 | 27 | 4 | 2F | 0,026 | 36 | 4 | 2F | 0,037 |
| .. ST5 15 FMP | 15 | 22,65 | 28 | F09 | 16 | 21 | 6 | 2F | 0,021 | 27 | 6 | 2F | 0,029 | 36 | 6 | 2F | 0,041 |
| .. ST5 16 FMP | 16 | 24,20 | 32 | F10 | 18 | 21 | 6 | 2F | 0,025 | 27 | 6 | 2F | 0,035 | 36 | 6 | 2F | 0,050 |
| .. ST5 18 FMP | 18 | 27,40 | 32 | F10 | 20 | 21 | 6 | 2F | 0,031 | 27 | 6 | 2F | 0,043 | 36 | 6 | 2F | 0,060 |
| .. ST5 19 FMP | 19 | 29,00 | 36 | F12 | 22 | 21 | 6 | 2F | 0,036 | 27 | 6 | 2F | 0,049 | 36 | 6 | 2F | 0,070 |
| .. ST5 20 FMP | 20 | 30,60 | 36 | F12 | 23 | 21 | 6 | 2F | 0,038 | 27 | 6 | 2F | 0,053 | 36 | 6 | 2F | 0,076 |
| .. ST5 22 FMP | 22 | 33,85 | 38 | F14 | 24 | 21 | 6 | 2F | 0,048 | 27 | 6 | 2F | 0,054 | 36 | 6 | 2F | 0,080 |
| .. ST5 24 FMP | 24 | 37,00 | 42 | F15 | 26 | 21 | 6 | 2F | 0,054 | 27 | 6 | 2F | 0,076 | 36 | 8 | 2F | 0,109 |
| .. ST5 25 FMP | 25 | 38,60 | 44 | F17 | 26 | 21 | 6 | 2F | 0,058 | 27 | 6 | 2F | 0,081 | 36 | 8 | 2F | 0,118 |
| .. ST5 26 FMP | 26 | 40,20 | 44 | F17 | 26 | 21 | 6 | 2F | 0,062 | 27 | 6 | 2F | 0,085 | 36 | 8 | 2F | 0,120 |
| .. ST5 27 FMP | 27 | 41,80 | 48 | F18 | 30 | 21 | 8 | 2F | 0,064 | 27 | 8 | 2F | 0,090 | 36 | 8 | 2F | 0,128 |
| .. ST5 28 FMP | 28 | 43,35 | 48 | F18 | 32 | 21 | 8 | 2F | 0,071 | 27 | 8 | 2F | 0,092 | 36 | 8 | 2F | 0,135 |
| .. ST5 30 FMP | 30 | 46,55 | 51 | F19 | 34 | 21 | 8 | 2F | 0,076 | 27 | 8 | 2F | 0,105 | 36 | 8 | 2F | 0,150 |
| .. ST5 32 FMP | 32 | 49,70 | 54 | F20 | 36 | 21 | 8 | 2F | 0,088 | 27 | 8 | 2F | 0,123 | 36 | 8 | 2F | 0,178 |
| .. ST5 36 FMP | 36 | 56,05 | 64 | F24 | 38 | 21 | 8 | 2F | 0,114 | 27 | 8 | 2F | 0,160 | 36 | 8 | 2F | 0,230 |
| .. ST5 40 FMP | 40 | 62,45 | 66 | F25 | 40 | 21 | 8 | 2F | 0,138 | 27 | 8 | 2F | 0,193 | 36 | 8 | 2F | 0,278 |
| .. ST5 42 FMP | 42 | 65,60 | 70 | F26 | 40 | 21 | 8 | 2F | 0,180 | 27 | 8 | 2F | 0,205 | 36 | 8 | 2F | 0,284 |
| .. ST5 44 MP | 44 | 68,80 | - | - | 45 | 21 | 8 | 2 | 0,185 | 27 | 8 | 2 | 0,228 | 36 | 8 | 2 | 0,315 |
| .. ST5 48 MP | 48 | 75,15 | - | - | 50 | 21 | 8 | 2 | 0,200 | 27 | 8 | 2 | 0,280 | 36 | 8 | 2 | 0,400 |
| .. ST5 60 MP | 60 | 94,25 | - | - | 65 | 21 | 8 | 2 | 0,307 | 27 | 8 | 2 | 0,430 | 36 | 8 | 2 | 0,614 |

.. Pulley type

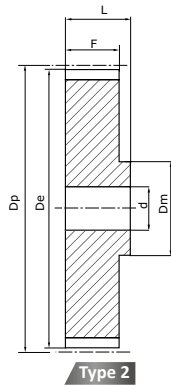


SOLID BUSH TIMING PULLEYS - ST10 «AT» belts

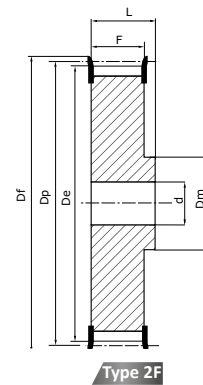
PITCH : 10 mm
MATERIAL : Aluminum
6082T6 UNI 9006/4



Timing pulleys for metric pitch «AT» belts



Type 2
Solid pulley not flanged



Type 2F
Flanged solid pulley

| Reference | Z | De | Df | Flange N° | Dm | 31 ST10 for belt with 16 mm width (F=21) | | | | 40 ST10 for belt with 25 mm width (F=30) | | | |
|----------------|----|--------|-----|-----------|-----|--|----|------|-------|--|----|------|-------|
| | | | | | | L | d | Type | Kg | L | d | Type | Kg |
| .. ST10 15 FMP | 15 | 45,90 | 51 | F19 | 31 | 31 | 8 | 2F | 0,118 | 40 | 8 | 2F | 0,152 |
| .. ST10 16 FMP | 16 | 49,05 | 54 | F20 | 35 | 31 | 8 | 2F | 0,134 | 40 | 8 | 2F | 0,176 |
| .. ST10 18 FMP | 18 | 55,45 | 60 | F22 | 40 | 31 | 8 | 2F | 0,167 | 40 | 8 | 2F | 0,253 |
| .. ST10 19 FMP | 19 | 58,65 | 66 | F25 | 44 | 31 | 8 | 2F | 0,184 | 40 | 8 | 2F | 0,286 |
| .. ST10 20 FMP | 20 | 61,80 | 66 | F25 | 46 | 31 | 8 | 2F | 0,208 | 40 | 8 | 2F | 0,322 |
| .. ST10 22 FMP | 22 | 68,15 | 75 | F27 | 52 | 31 | 8 | 2F | 0,253 | 40 | 8 | 2F | 0,393 |
| .. ST10 24 FMP | 24 | 74,55 | 83 | F29 | 58 | 31 | 8 | 2F | 0,288 | 40 | 8 | 2F | 0,475 |
| .. ST10 25 FMP | 25 | 77,75 | 83 | F29 | 60 | 31 | 8 | 2F | 0,310 | 40 | 8 | 2F | 0,527 |
| .. ST10 26 FMP | 26 | 80,90 | 87 | F30 | 60 | 31 | 8 | 2F | 0,357 | 40 | 8 | 2F | 0,564 |
| .. ST10 27 FMP | 27 | 84,10 | 91 | F31 | 60 | 31 | 8 | 2F | 0,364 | 40 | 8 | 2F | 0,602 |
| .. ST10 28 FMP | 28 | 87,25 | 93 | F32 | 60 | 31 | 8 | 2F | 0,401 | 40 | 8 | 2F | 0,642 |
| .. ST10 30 FMP | 30 | 93,65 | 97 | F33 | 60 | 31 | 8 | 2F | 0,441 | 40 | 8 | 2F | 0,74 |
| .. ST10 32 FMP | 32 | 100,00 | 106 | F35 | 65 | 31 | 10 | 2F | 0,493 | 40 | 10 | 2F | 0,844 |
| .. ST10 36 FMP | 36 | 112,75 | 120 | F38 | 70 | 31 | 10 | 2F | 0,623 | 40 | 10 | 2F | 1,063 |
| .. ST10 40 FMP | 40 | 125,45 | 135 | F42 | 80 | 31 | 10 | 2F | 0,787 | 40 | 10 | 2F | 1,371 |
| .. ST10 44 MP | 44 | 138,20 | - | - | 88 | 31 | 10 | 2 | 0,993 | 40 | 10 | 2 | 1,611 |
| .. ST10 48 MP | 48 | 150,95 | - | - | 95 | 31 | 16 | 2 | 1,090 | 40 | 16 | 2 | 1,611 |
| .. ST10 60 MP | 60 | 189,10 | - | - | 110 | 31 | 16 | 2 | 1,701 | 40 | 16 | 2 | 3,004 |

.. Pulley type

| Reference | Z | De | Df | Flange N° | Dm | 47 ST10 for belt with 32 mm width (F=37) | | | | 66 ST10 for belt with 50 mm width (F=56) | | | |
|----------------|----|--------|-----|-----------|-----|--|----|------|-------|--|----|------|-------|
| | | | | | | L | d | Type | Kg | L | d | Type | Kg |
| .. ST10 18 FMP | 18 | 55,45 | 60 | F22 | 40 | 47 | 10 | 2F | 0,253 | 66 | 10 | 2F | 0,422 |
| .. ST10 19 FMP | 19 | 58,65 | 66 | F25 | 44 | 47 | 10 | 2F | 0,286 | 66 | 10 | 2F | 0,466 |
| .. ST10 20 FMP | 20 | 61,80 | 66 | F25 | 46 | 47 | 12 | 2F | 0,322 | 66 | 12 | 2F | 0,520 |
| .. ST10 22 FMP | 22 | 68,15 | 75 | F27 | 52 | 47 | 12 | 2F | 0,393 | 66 | 12 | 2F | 0,640 |
| .. ST10 24 FMP | 24 | 74,55 | 83 | F29 | 58 | 47 | 12 | 2F | 0,475 | 66 | 12 | 2F | 0,736 |
| .. ST10 25 FMP | 25 | 77,75 | 83 | F29 | 60 | 47 | 12 | 2F | 0,527 | 66 | 12 | 2F | 0,766 |
| .. ST10 26 FMP | 26 | 80,90 | 87 | F30 | 60 | 47 | 12 | 2F | 0,564 | 66 | 12 | 2F | 0,845 |
| .. ST10 27 FMP | 27 | 84,10 | 91 | F31 | 60 | 47 | 12 | 2F | 0,602 | 66 | 12 | 2F | 0,946 |
| .. ST10 28 FMP | 28 | 87,25 | 93 | F32 | 60 | 47 | 12 | 2F | 0,642 | 66 | 12 | 2F | 0,110 |
| .. ST10 30 FMP | 30 | 93,65 | 97 | F33 | 60 | 47 | 12 | 2F | 0,740 | 66 | 12 | 2F | 1,169 |
| .. ST10 32 FMP | 32 | 100,00 | 106 | F35 | 65 | 47 | 12 | 2F | 0,844 | 66 | 12 | 2F | 1,300 |
| .. ST10 36 FMP | 36 | 112,75 | 120 | F38 | 70 | 47 | 12 | 2F | 1,063 | 66 | 16 | 2F | 1,637 |
| .. ST10 40 FMP | 40 | 125,45 | 135 | F42 | 80 | 47 | 16 | 2F | 1,371 | 66 | 16 | 2F | 1,999 |
| .. ST10 44 MP | 44 | 138,20 | - | - | 88 | 47 | 16 | 2 | 1,611 | 66 | 16 | 2 | 2,420 |
| .. ST10 48 MP | 48 | 150,95 | - | - | 95 | 47 | 16 | 2 | 1,913 | 66 | 16 | 2 | 2,830 |
| .. ST10 60 MP | 60 | 189,10 | - | - | 110 | 47 | 16 | 2 | 3,004 | 66 | 16 | 2 | 4,366 |

.. Pulley type



SOLID BUSH TIMING PULLEYS - XL 037

PITCH : 1/5" (5,08 mm)

MATERIALS :

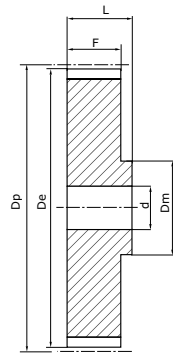
Steel C40 UNI 7845

Aluminum 6082T6 UNI

9006/4

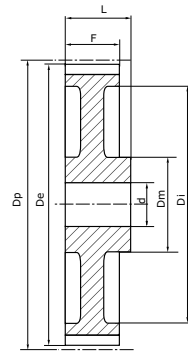


Timing pulleys for pitches in inches



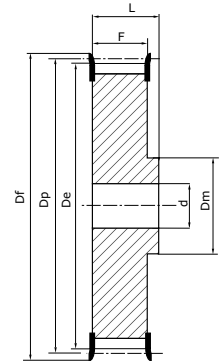
Type 2

Solid pulley not flanged



Type 2A

Light pulley not flanged



Type 2F

Flanged solid pulley

XL 037 for belt with 9.525mm width

| Reference | Z | Dp | De | Df | Flange N° | Dm | Di | F | L | d | Type | Kg |
|---------------|----|--------|--------|----|-----------|------|-----|------|----|----|------|------|
| 10 XL037.. F | 10 | 16,17 | 15,66 | 23 | F07 | 9,5 | - | 14,3 | 20 | 4 | 2F | 0,02 |
| 11 XL037 .. F | 11 | 17,79 | 17,28 | 23 | F07 | 9,5 | - | 14,3 | 20 | 4 | 2F | 0,02 |
| 12 XL037 .. F | 12 | 19,40 | 18,90 | 25 | F08 | 10 | - | 14,3 | 20 | 4 | 2F | 0,03 |
| 13 XL037 .. F | 13 | 21,02 | 20,51 | 28 | F09 | 10 | - | 14,3 | 20 | 4 | 2F | 0,04 |
| 14 XL037 .. F | 14 | 22,64 | 22,13 | 28 | F09 | 15 | - | 14,3 | 20 | 4 | 2F | 0,05 |
| 15 XL037 .. F | 15 | 24,26 | 23,75 | 28 | F09 | 15 | - | 14,3 | 20 | 6 | 2F | 0,05 |
| 16 XL037 .. F | 16 | 25,87 | 25,36 | 32 | F10 | 16 | - | 14,3 | 20 | 6 | 2F | 0,06 |
| 17 XL037 .. F | 17 | 27,49 | 26,98 | 35 | F11 | 20 | - | 14,3 | 20 | 6 | 2F | 0,07 |
| 18 XL037 .. F | 18 | 29,11 | 28,60 | 35 | F11 | 20 | - | 14,3 | 20 | 6 | 2F | 0,08 |
| 19 XL037 .. F | 19 | 30,72 | 30,22 | 38 | F13 | 20 | - | 14,3 | 22 | 6 | 2F | 0,09 |
| 20 XL037 .. F | 20 | 33,34 | 31,83 | 38 | F13 | 23,5 | - | 14,3 | 22 | 6 | 2F | 0,11 |
| 21 XL037 .. F | 21 | 33,96 | 33,45 | 38 | F13 | 23,5 | - | 14,3 | 22 | 6 | 2F | 0,12 |
| 22 XL037 .. F | 22 | 35,57 | 35,07 | 41 | F14 | 25 | - | 14,3 | 22 | 6 | 2F | 0,13 |
| 24 XL037 .. F | 24 | 38,81 | 38,30 | 44 | F16 | 30 | - | 14,3 | 22 | 6 | 2F | 0,15 |
| 26 XL037 .. F | 26 | 42,04 | 41,53 | 48 | F17 | 30 | - | 14,3 | 22 | 8 | 2F | 0,19 |
| 27 XL037 .. F | 27 | 43,66 | 43,15 | 48 | F17 | 34 | - | 14,3 | 22 | 8 | 2F | 0,20 |
| 28 XL037 .. F | 28 | 45,28 | 44,77 | 51 | F19 | 34 | - | 14,3 | 22 | 8 | 2F | 0,22 |
| 29 XL037 .. F | 29 | 46,89 | 46,39 | 51 | F19 | 34 | - | 14,3 | 22 | 8 | 2F | 0,22 |
| 30 XL037 .. F | 30 | 48,51 | 48,00 | 54 | F20 | 38 | - | 14,3 | 22 | 8 | 2F | 0,11 |
| 32 XL037 .. F | 32 | 51,74 | 51,24 | 57 | F22 | 38 | - | 14,3 | 25 | 8 | 2F | 0,12 |
| 34 XL037 .. | 34 | 54,98 | 54,47 | - | - | 45 | - | 14,3 | 25 | 8 | 2 | 0,12 |
| 35 XL037 .. | 35 | 56,60 | 56,09 | - | - | 45 | - | 14,3 | 25 | 8 | 2 | 0,13 |
| 36 XL037 .. | 36 | 58,21 | 57,70 | - | - | 45 | - | 14,3 | 25 | 8 | 2 | 0,14 |
| 38 XL037 .. | 38 | 61,45 | 60,94 | - | - | 45 | - | 14,3 | 25 | 8 | 2 | 0,16 |
| 39 XL037 .. | 39 | 63,06 | 62,56 | - | - | 45 | - | 14,3 | 25 | 8 | 2 | 0,17 |
| 40 XL037 .. | 40 | 64,68 | 64,17 | - | - | 45 | - | 14,3 | 25 | 8 | 2 | 0,17 |
| 41 XL037 .. | 41 | 66,30 | 65,79 | - | - | 45 | - | 14,3 | 25 | 8 | 2 | 0,18 |
| 42 XL037 .. | 42 | 67,91 | 67,41 | - | - | 45 | - | 14,3 | 25 | 8 | 2 | 0,18 |
| 43 XL037 .. | 43 | 69,53 | 69,02 | - | - | 45 | - | 14,3 | 25 | 8 | 2 | 0,19 |
| 44 XL037 .. | 44 | 71,15 | 70,64 | - | - | 45 | - | 14,3 | 25 | 8 | 2 | 0,19 |
| 45 XL037 .. | 45 | 72,77 | 72,26 | - | - | 45 | 61 | 14,3 | 25 | 10 | 2A | 0,19 |
| 47 XL037 .. | 47 | 76,00 | 75,49 | - | - | 45 | 61 | 14,3 | 25 | 10 | 2A | 0,19 |
| 48 XL037 .. | 48 | 77,62 | 77,11 | - | - | 45 | 61 | 14,3 | 25 | 10 | 2A | 0,19 |
| 49 XL037 .. | 49 | 79,23 | 78,73 | - | - | 45 | 61 | 14,3 | 25 | 10 | 2A | 0,22 |
| 52 XL037 .. | 52 | 84,08 | 83,58 | - | - | 45 | 67 | 14,3 | 25 | 10 | 2A | 0,22 |
| 56 XL037 .. | 56 | 90,55 | 90,04 | - | - | 45 | 80 | 14,3 | 25 | 10 | 2A | 0,25 |
| 57 XL037 .. | 57 | 92,17 | 91,66 | - | - | 45 | 80 | 14,3 | 25 | 10 | 2A | 0,25 |
| 58 XL037 .. | 58 | 93,79 | 93,28 | - | - | 45 | 80 | 14,3 | 25 | 10 | 2A | 0,25 |
| 60 XL037 .. | 60 | 97,02 | 96,51 | - | - | 45 | 80 | 14,3 | 25 | 10 | 2A | 0,25 |
| 70 XL037 .. | 70 | 113,19 | 112,68 | - | - | 45 | 100 | 14,3 | 25 | 10 | 2A | 0,30 |
| 72 XL037 .. | 72 | 116,42 | 115,92 | - | - | 45 | 100 | 14,3 | 25 | 10 | 2A | 0,30 |

.. Add AL for an aluminium pulley



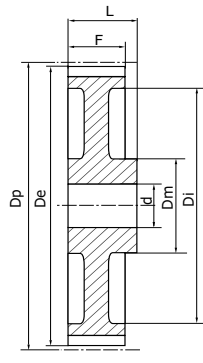
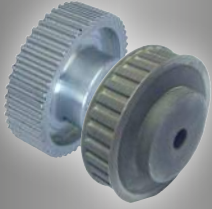
SOLID BUSH TIMING PULLEYS - L050 / L075 / L100

PITCH : 3/8" (9,525 mm)

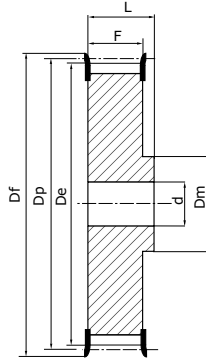
MATERIALS :

Steel C40 UNI 7845

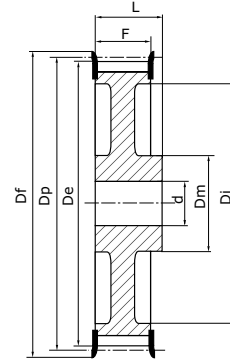
Cast iron G25 UNI 5007



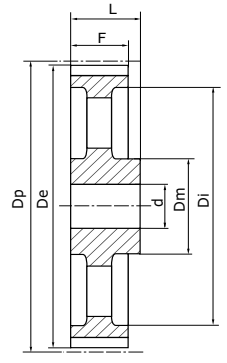
Type 2A
Light pulley not flanged



Type 2F
Flanged solid pulley



Type 2AF
Light flanged solid pulley



Type 2E
Hollowed pulley not flanged

Steel = from 10 to 48 teeth

Cast iron = from 49 to 120 teeth

| Reference | Z | Dp | De | Df | Flange N° | Dm | Di | L050 for belt with 12.7mm width | | | | | L075 for belt with 19.05mm width | | | | | L100 for belt with 25.4mm width | | | | |
|-------------|-----|--------|--------|-----|-----------|----|-----|------------------------------------|----|----|------|------|-------------------------------------|----|----|------|-------|------------------------------------|----|----|------|-------|
| | | | | | | | | F | L | d | Type | Kg | F | L | d | Type | Kg | F | L | d | Type | Kg |
| 10 L .. FMP | 10 | 30,32 | 29,56 | 37 | F13 | 20 | - | 19 | 28 | 8 | 2F | 0,11 | 25,4 | 38 | 8 | 2F | 0,15 | 31,8 | 45 | 8 | 2F | 0,15 |
| 11 L .. FMP | 11 | 33,35 | 32,59 | 37 | F13 | 22 | - | 19 | 30 | 8 | 2F | 0,14 | 25,4 | 38 | 8 | 2F | 0,17 | 31,8 | 45 | 8 | 2F | 0,20 |
| 12 L .. FMP | 12 | 36,38 | 35,62 | 43 | F16 | 24 | - | 19 | 30 | 8 | 2F | 0,17 | 25,4 | 38 | 8 | 2F | 0,22 | 31,8 | 45 | 8 | 2F | 0,26 |
| 13 L .. FMP | 13 | 39,41 | 38,65 | 44 | F17 | 28 | - | 19 | 30 | 8 | 2F | 0,18 | 25,4 | 38 | 8 | 2F | 0,25 | 31,8 | 45 | 8 | 2F | 0,30 |
| 14 L .. FMP | 14 | 42,45 | 41,68 | 48 | F18 | 28 | - | 19 | 30 | 8 | 2F | 0,22 | 25,4 | 38 | 11 | 2F | 0,28 | 31,8 | 45 | 11 | 2F | 0,34 |
| 15 L .. FMP | 15 | 45,48 | 44,72 | 51 | F19 | 34 | - | 19 | 30 | 8 | 2F | 0,28 | 25,4 | 38 | 11 | 2F | 0,38 | 31,8 | 45 | 11 | 2F | 0,45 |
| 16 L .. FMP | 16 | 48,51 | 47,75 | 54 | F20 | 36 | - | 19 | 32 | 8 | 2F | 0,35 | 25,4 | 38 | 11 | 2F | 0,43 | 31,8 | 45 | 11 | 2F | 0,52 |
| 17 L .. FMP | 17 | 51,54 | 50,78 | 57 | F21 | 36 | - | 19 | 32 | 10 | 2F | 0,36 | 25,4 | 38 | 11 | 2F | 0,44 | 31,8 | 45 | 11 | 2F | 0,53 |
| 18 L .. FMP | 18 | 54,57 | 53,81 | 60 | F22 | 40 | - | 19 | 32 | 10 | 2F | 0,42 | 25,4 | 38 | 11 | 2F | 0,52 | 31,8 | 45 | 11 | 2F | 0,62 |
| 19 L .. FMP | 19 | 57,61 | 56,84 | 64 | F24 | 40 | - | 19 | 32 | 10 | 2F | 0,45 | 25,4 | 38 | 11 | 2F | 0,56 | 31,8 | 45 | 11 | 2F | 0,66 |
| 20 L .. FMP | 20 | 60,64 | 59,88 | 66 | F25 | 40 | - | 19 | 32 | 10 | 2F | 0,48 | 25,4 | 38 | 11 | 2F | 0,59 | 31,8 | 45 | 11 | 2F | 0,72 |
| 21 L .. FMP | 21 | 63,67 | 62,91 | 70 | F26 | 45 | - | 19 | 32 | 10 | 2F | 0,57 | 25,4 | 38 | 11 | 2F | 0,64 | 31,8 | 45 | 11 | 2F | 0,77 |
| 22 L .. FMP | 22 | 66,70 | 65,94 | 75 | F27 | 45 | - | 19 | 32 | 10 | 2F | 0,59 | 25,4 | 38 | 11 | 2F | 0,69 | 31,8 | 45 | 11 | 2F | 0,88 |
| 23 L .. FMP | 23 | 69,73 | 68,97 | 79 | F28 | 55 | - | 19 | 32 | 10 | 2F | 0,61 | 25,4 | 38 | 11 | 2F | 0,76 | 31,8 | 45 | 11 | 2F | 1,12 |
| 24 L .. FMP | 24 | 72,77 | 72,00 | 79 | F28 | 55 | - | 19 | 32 | 10 | 2F | 0,80 | 25,4 | 38 | 11 | 2F | 0,87 | 31,8 | 45 | 11 | 2F | 1,13 |
| 25 L .. FMP | 25 | 75,80 | 75,04 | 83 | F29 | 58 | - | 19 | 32 | 10 | 2F | 0,85 | 25,4 | 38 | 11 | 2F | 0,95 | 31,8 | 45 | 11 | 2F | 1,18 |
| 26 L .. FMP | 26 | 78,83 | 78,07 | 87 | F30 | 58 | - | 19 | 32 | 11 | 2F | 0,90 | 25,4 | 38 | 11 | 2F | 1,06 | 31,8 | 45 | 11 | 2F | 1,24 |
| 27 L .. FMP | 27 | 81,86 | 81,10 | 87 | F30 | 58 | - | 19 | 32 | 11 | 2F | 0,91 | 25,4 | 38 | 11 | 2F | 1,18 | 31,8 | 45 | 11 | 2F | 1,35 |
| 28 L .. FMP | 28 | 84,89 | 84,13 | 91 | F31 | 58 | - | 19 | 32 | 11 | 2F | 0,96 | 25,4 | 38 | 11 | 2F | 1,19 | 31,8 | 45 | 11 | 2F | 1,42 |
| 29 L .. FMP | 29 | 87,93 | 87,16 | 93 | F32 | 58 | - | 19 | 32 | 11 | 2F | 1,00 | 25,4 | 38 | 11 | 2F | 1,25 | 31,8 | 45 | 11 | 2F | 1,50 |
| 30 L .. FMP | 30 | 90,96 | 90,20 | 97 | F33 | 70 | - | 19 | 32 | 11 | 2F | 1,07 | 25,4 | 38 | 11 | 2F | 1,33 | 31,8 | 45 | 11 | 2F | 1,61 |
| 32 L .. FMP | 32 | 97,02 | 96,26 | 102 | F34 | 70 | - | 19 | 32 | 11 | 2F | 1,23 | 25,4 | 38 | 11 | 2F | 1,54 | 31,8 | 45 | 11 | 2F | 1,84 |
| 33 L .. FMP | 33 | 100,05 | 99,29 | 106 | F35 | 70 | - | 19 | 32 | 11 | 2F | 1,30 | 25,4 | 38 | 11 | 2F | 1,63 | 31,8 | 45 | 11 | 2F | 1,95 |
| 34 L .. FMP | 34 | 103,08 | 102,32 | 112 | F35 | 70 | - | 19 | 32 | 11 | 2F | 1,37 | 25,4 | 38 | 11 | 2F | 1,67 | 31,8 | 45 | 11 | 2F | 2,10 |
| 35 L .. FMP | 35 | 106,12 | 105,35 | 112 | F36 | 70 | - | 19 | 32 | 11 | 2F | 1,44 | 25,4 | 38 | 11 | 2F | 1,80 | 31,8 | 45 | 11 | 2F | 2,23 |
| 36 L .. FMP | 36 | 109,15 | 108,39 | 115 | F37 | 70 | - | 19 | 32 | 11 | 2F | 1,50 | 25,4 | 38 | 11 | 2F | 1,89 | 31,8 | 45 | 11 | 2F | 2,32 |
| 40 L .. FMP | 40 | 121,28 | 120,51 | 128 | F40 | 70 | 100 | 19 | 32 | 11 | 2AF | 1,77 | 25,4 | 38 | 11 | 2A | 2,35 | 31,8 | 45 | 11 | 2AF | 2,80 |
| 41 L .. FMP | 41 | 124,31 | 123,55 | 131 | F41 | 70 | 103 | 19 | 32 | 11 | 2AF | 1,84 | 25,4 | 38 | 11 | 2AF | 2,40 | 31,8 | 45 | 11 | 2AF | 2,95 |
| 42 L .. FMP | 42 | 127,34 | 126,58 | 135 | F42 | 70 | 106 | 19 | 32 | 11 | 2AF | 1,97 | 25,4 | 38 | 11 | 2AF | 2,53 | 31,8 | 45 | 11 | 2AF | 3,10 |
| 44 L .. FMP | 44 | 133,40 | 132,64 | 142 | F45 | 70 | 112 | 19 | 32 | 11 | 2AF | 2,20 | 25,4 | 38 | 11 | 2AF | 2,75 | 31,8 | 45 | 11 | 2AF | 3,36 |
| 45 L .. FMP | 45 | 136,44 | 135,67 | 142 | F45 | 70 | 115 | 19 | 32 | 11 | 2AF | 2,27 | 25,4 | 38 | 11 | 2AF | 2,86 | 31,8 | 45 | 11 | 2AF | 3,45 |
| 47 L .. FMP | 47 | 142,50 | 141,74 | 150 | F48 | 70 | 121 | 19 | 32 | 11 | 2AF | 2,45 | 25,4 | 38 | 11 | 2AF | 3,02 | 31,8 | 45 | 11 | 2AF | 3,65 |
| 48 L .. FMP | 48 | 145,53 | 144,77 | 150 | F48 | 70 | 124 | 19 | 32 | 11 | 2AF | 2,67 | 25,4 | 38 | 11 | 2AF | 3,19 | 31,8 | 45 | 11 | 2AF | 3,86 |
| 49 L .. MP | 49 | 148,56 | 147,80 | - | - | 70 | 127 | 19 | 32 | 14 | 2A | 1,80 | 19 | 38 | 14 | 2A | 2,10 | 31,8 | 45 | 14 | 2A | 2,40 |
| 50 L .. MP | 50 | 151,60 | 150,83 | - | - | 70 | 130 | 19 | 32 | 14 | 2A | 1,90 | 19 | 38 | 14 | 2A | 2,20 | 31,8 | 45 | 14 | 2A | 2,50 |
| 52 L .. MP | 52 | 157,66 | 156,90 | - | - | 70 | 136 | 19 | 32 | 14 | 2A | 2,10 | 19 | 38 | 14 | 2A | 2,38 | 31,8 | 45 | 14 | 2A | 2,70 |
| 56 L .. MP | 56 | 169,79 | 169,02 | - | - | 70 | 149 | 19 | 32 | 14 | 2A | 2,18 | 19 | 38 | 14 | 2A | 2,49 | 31,8 | 45 | 14 | 2A | 2,91 |
| 57 L .. MP | 57 | 172,82 | 172,06 | - | - | 70 | 152 | 19 | 32 | 14 | 2A | 2,47 | 19 | 38 | 14 | 2A | 2,73 | 31,8 | 45 | 14 | 2A | 3,10 |
| 60 L .. MP | 60 | 181,91 | 181,15 | - | - | 75 | 160 | 19 | 42 | 14 | 2A | 3,10 | 19 | 45 | 14 | 2A | 3,44 | 31,8 | 50 | 14 | 2A | 3,55 |
| 65 L .. MP | 65 | 197,07 | 196,31 | - | - | 75 | 176 | 19 | 42 | 14 | 2E | 3,20 | 25,4 | 45 | 14 | 2E | 3,50 | 31,8 | 50 | 14 | 2E | 4,00 |
| 66 L .. MP | 66 | 200,11 | 199,34 | - | - | 75 | 179 | 19 | 42 | 14 | 2E | 3,23 | 25,4 | 45 | 14 | 2E | 3,60 | 31,8 | 50 | 14 | 2E | 4,15 |
| 72 L .. MP | 72 | 218,30 | 217,53 | - | - | 75 | 197 | 19 | 42 | 14 | 2E | 4,86 | 25,4 | 45 | 14 | 2E | 4,58 | 31,8 | 50 | 14 | 2E | 5,00 |
| 84 L .. MP | 84 | 254,68 | 253,92 | - | - | 75 | 233 | 19 | 42 | 14 | 2E | 5,00 | 25,4 | 45 | 14 | 2E | 5,60 | 31,8 | 50 | 14 | 2E | 6,30 |
| 90 L .. MP | 90 | 272,87 | 272,11 | - | - | 75 | 252 | 19 | 42 | 14 | 2E | 5,50 | 25,4 | 45 | 14 | 2E | 6,50 | 31,8 | 50 | 14 | 2E | 7,50 |
| 96 L .. MP | 96 | 291,06 | 290,30 | - | - | 75 | 269 | 19 | 42 | 14 | 2E | 6,00 | 25,4 | 45 | 14 | 2E | 7,00 | 31,8 | 50 | 14 | 2E | 8,20 |
| 120 L .. MP | 120 | 363,83 | 363,07 | - | - | 75 | 342 | 19 | 42 | 14 | 2E | 8,50 | 25,4 | 45 | 14 | 2E | 10,00 | 31,8 | 50 | 14 | 2E | 11,50 |

.. Belt width in 1/100 inch = 050,075 or 100



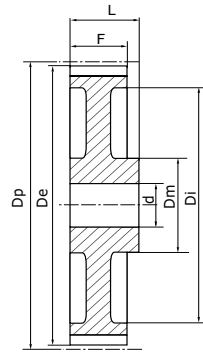
SOLID BUSH TIMING PULLEYS - H075 / H100 / H150

PITCH : 1/2" (12,7 mm)

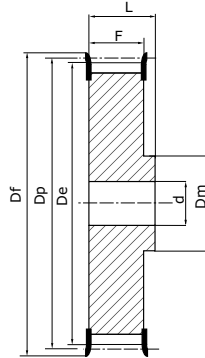
MATERIALS :

Steel C40 UNI 7845

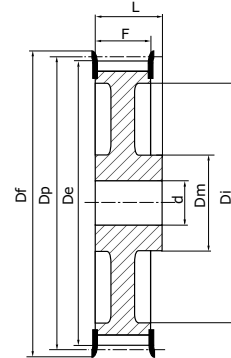
Cast iron G25 UNI 5007



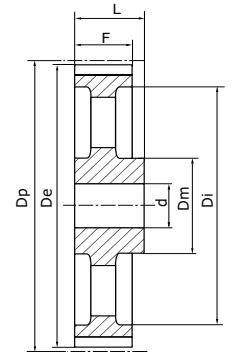
Type 2A
Light pulley not flanged



Type 2F
Flanged solid pulley



Type 2AF
Light flanged solid pulley



Type 2E
Hollowed pulley not flanged

Steel = from 14 to 42 teeth
Cast iron = from 44 to 156 teeth

| Reference | Z | Dp | De | Df | Flange N° | H075 for belt with 19.05mm width (F = 26,4) | | | | | H100 for belt with 25.4mm width (F=31,8) | | | | | H150 for belt with 38.1mm width (F=46) | | | | | | | |
|------------|-----|--------|--------|-----|-----------|---|-----|----|----|------|--|-----|-----|----|----|--|-------|-----|-----|----|----|------|-------|
| | | | | | | Dm | Di | L | d | Type | Kg | Dm | Di | L | d | Type | Kg | Dm | Di | L | d | Type | Kg |
| 14H .. FMP | 14 | 56,60 | 55,22 | 64 | F24 | 40 | - | 40 | 8 | 2F | 0,59 | 45 | - | 45 | 11 | 2F | 0,67 | 42 | - | 58 | 11 | 2F | 0,91 |
| 15H .. FMP | 15 | 60,64 | 59,27 | 66 | F25 | 45 | - | 40 | 8 | 2F | 0,65 | 45 | - | 45 | 11 | 2F | 0,77 | 45 | - | 58 | 11 | 2F | 0,99 |
| 16H .. FMP | 16 | 64,68 | 63,31 | 70 | F26 | 45 | - | 40 | 8 | 2F | 0,70 | 45 | - | 45 | 11 | 2F | 0,88 | 45 | - | 58 | 11 | 2F | 1,08 |
| 17H .. FMP | 17 | 68,72 | 67,35 | 75 | F27 | 45 | - | 40 | 8 | 2F | 0,73 | 45 | - | 45 | 11 | 2F | 0,88 | 45 | - | 58 | 11 | 2F | 1,15 |
| 18H .. FMP | 18 | 72,77 | 71,39 | 79 | F28 | 55 | - | 40 | 11 | 2F | 0,91 | 55 | - | 45 | 14 | 2F | 1,06 | 55 | - | 58 | 14 | 2F | 1,45 |
| 19H .. FMP | 19 | 76,81 | 75,44 | 83 | F29 | 60 | - | 40 | 11 | 2F | 1,08 | 60 | - | 45 | 14 | 2F | 1,23 | 60 | - | 58 | 14 | 2F | 1,55 |
| 20H .. FMP | 20 | 80,85 | 79,48 | 87 | F30 | 62 | - | 40 | 11 | 2F | 1,18 | 62 | - | 45 | 14 | 2F | 1,33 | 62 | - | 58 | 14 | 2F | 1,66 |
| 21H .. FMP | 21 | 84,89 | 83,52 | 91 | F31 | 65 | - | 40 | 11 | 2F | 1,30 | 65 | - | 45 | 14 | 2F | 1,43 | 65 | - | 58 | 14 | 2F | 1,87 |
| 22H .. FMP | 22 | 88,94 | 87,56 | 93 | F32 | 68 | - | 40 | 11 | 2F | 1,42 | 68 | - | 45 | 14 | 2F | 1,63 | 68 | - | 58 | 14 | 2F | 2,07 |
| 23H .. FMP | 23 | 92,98 | 91,61 | 97 | F33 | 72 | - | 40 | 11 | 2F | 1,67 | 72 | - | 45 | 14 | 2F | 1,85 | 72 | - | 58 | 14 | 2F | 2,28 |
| 24H .. FMP | 24 | 97,02 | 95,65 | 102 | F34 | 72 | - | 40 | 11 | 2F | 1,71 | 72 | - | 45 | 14 | 2F | 1,93 | 72 | - | 58 | 14 | 2F | 2,50 |
| 25H .. FMP | 25 | 101,06 | 99,69 | 106 | F35 | 72 | - | 40 | 11 | 2F | 1,87 | 72 | - | 45 | 14 | 2F | 2,07 | 72 | - | 58 | 14 | 2F | 2,71 |
| 26H .. FMP | 26 | 105,11 | 103,73 | 112 | F36 | 80 | - | 40 | 11 | 2F | 2,00 | 80 | - | 45 | 14 | 2F | 2,30 | 80 | - | 58 | 14 | 2F | 2,99 |
| 27H .. FMP | 27 | 109,15 | 107,78 | 115 | F37 | 80 | - | 40 | 11 | 2F | 2,10 | 80 | - | 45 | 14 | 2F | 2,40 | 80 | - | 58 | 14 | 2F | 3,15 |
| 28H .. FMP | 28 | 113,19 | 111,82 | 120 | F38 | 80 | - | 40 | 11 | 2F | 2,26 | 80 | - | 45 | 14 | 2F | 2,53 | 80 | - | 58 | 14 | 2F | 3,39 |
| 29H .. FMP | 29 | 117,23 | 115,86 | 123 | F39 | 80 | - | 40 | 11 | 2F | 2,49 | 80 | - | 45 | 14 | 2F | 2,70 | 80 | - | 58 | 14 | 2F | 3,57 |
| 30H .. FMP | 30 | 121,28 | 119,90 | 128 | F40 | 80 | - | 40 | 11 | 2F | 2,70 | 80 | - | 45 | 14 | 2F | 2,93 | 80 | - | 58 | 14 | 2F | 3,86 |
| 32H .. FMP | 32 | 129,36 | 127,99 | 135 | F42 | 80 | - | 40 | 11 | 2F | 2,85 | 80 | - | 45 | 14 | 2F | 3,06 | 80 | - | 58 | 14 | 2F | 4,37 |
| 33H .. FMP | 33 | 133,40 | 132,03 | 140 | F44 | 80 | - | 40 | 11 | 2F | 3,10 | 80 | - | 45 | 14 | 2F | 3,40 | 80 | - | 58 | 14 | 2F | 4,66 |
| 34H .. FMP | 34 | 137,45 | 136,07 | 142 | F45 | 80 | - | 40 | 11 | 2F | 3,30 | 80 | - | 45 | 14 | 2F | 3,57 | 80 | - | 58 | 14 | 2F | 4,98 |
| 35H .. FMP | 35 | 141,49 | 140,12 | 150 | F48 | 80 | - | 40 | 11 | 2F | 3,50 | 80 | - | 45 | 14 | 2F | 3,80 | 80 | - | 58 | 14 | 2F | 5,30 |
| 36H .. FMP | 36 | 145,53 | 144,16 | 150 | F48 | 80 | 118 | 40 | 11 | 2AF | 3,65 | 80 | 118 | 45 | 14 | 2AF | 3,92 | 80 | 118 | 58 | 14 | 2AF | 5,50 |
| 38H .. FMP | 38 | 153,62 | 152,24 | 158 | F50 | 80 | 126 | 40 | 11 | 2AF | 3,90 | 80 | 126 | 45 | 14 | 2AF | 4,40 | 80 | 126 | 58 | 14 | 2AF | 6,10 |
| 40H .. FMP | 40 | 161,70 | 160,33 | 168 | F52 | 80 | 134 | 40 | 14 | 2AF | 4,23 | 80 | 134 | 45 | 14 | 2AF | 4,95 | 80 | 134 | 58 | 14 | 2AF | 6,80 |
| 44H .. FMP | 44 | 177,87 | 176,50 | 184 | F55 | 80 | 150 | 40 | 14 | 2AF | 5,20 | 80 | 150 | 50 | 14 | 2AF | 6,20 | 80 | 150 | 58 | 19 | 2AF | 8,50 |
| 45H .. FMP | 45 | 181,91 | 180,54 | 192 | F57 | 80 | 154 | 40 | 14 | 2AF | 5,45 | 80 | 154 | 50 | 14 | 2AF | 6,45 | 80 | 154 | 58 | 19 | 2AF | 9,00 |
| 48H .. FMP | 48 | 194,04 | 192,67 | 200 | F59 | 90 | 166 | 45 | 14 | 2AF | 4,30 | 90 | 166 | 50 | 14 | 2AF | 5,30 | 90 | 166 | 65 | 19 | 2AF | 6,70 |
| 49H .. MP | 49 | 198,08 | 196,71 | - | - | 90 | 170 | 45 | 14 | 2A | 4,50 | 90 | 170 | 50 | 19 | 2A | 5,40 | 90 | 170 | 65 | 19 | 2A | 7,00 |
| 50H .. MP | 50 | 202,13 | 200,75 | - | - | 90 | 174 | 45 | 14 | 2A | 4,66 | 90 | 174 | 50 | 19 | 2A | 5,50 | 90 | 174 | 65 | 19 | 2A | 7,10 |
| 52H .. MP | 52 | 210,21 | 208,84 | - | - | - | - | - | - | - | - | 90 | 182 | 50 | 19 | 2A | 5,80 | 90 | 182 | 65 | 19 | 2A | 7,30 |
| 58H .. MP | 58 | 234,47 | 233,09 | - | - | - | - | - | - | - | - | 90 | 207 | 50 | 19 | 2E | 6,20 | 90 | 207 | 65 | 19 | 2E | 8,10 |
| 60H .. MP | 60 | 242,55 | 241,18 | - | - | - | - | - | - | - | - | 90 | 215 | 50 | 19 | 2E | 7,50 | 90 | 215 | 65 | 19 | 2E | 9,00 |
| 70H .. MP | 70 | 282,98 | 281,61 | - | - | - | - | - | - | - | - | 100 | 255 | 55 | 19 | 2E | 8,20 | 100 | 255 | 65 | 24 | 2E | 10,50 |
| 72H .. MP | 72 | 291,06 | 289,69 | - | - | - | - | - | - | - | - | 100 | 263 | 55 | 19 | 2E | 9,00 | 100 | 263 | 65 | 24 | 2E | 11,00 |
| 82H .. MP | 82 | 331,49 | 330,12 | - | - | - | - | - | - | - | - | 100 | 304 | 55 | 19 | 2E | 9,20 | 100 | 304 | 65 | 24 | 2E | 12,00 |
| 84H .. MP | 84 | 339,57 | 338,20 | - | - | - | - | - | - | - | - | 100 | 312 | 55 | 19 | 2E | 10,00 | 100 | 312 | 65 | 24 | 2E | 13,00 |
| 94H .. MP | 94 | 380,00 | 378,63 | - | - | - | - | - | - | - | - | 120 | 352 | 60 | 19 | 2E | 13,00 | 120 | 352 | 65 | 24 | 2E | 16,00 |
| 96H .. MP | 96 | 388,08 | 386,71 | - | - | - | - | - | - | - | - | 120 | 360 | 60 | 19 | 2E | 13,80 | 120 | 360 | 65 | 24 | 2E | 17,00 |
| 106H .. MP | 106 | 428,51 | 427,14 | - | - | - | - | - | - | - | - | 120 | 401 | 60 | 19 | 2E | 15,50 | 120 | 401 | 65 | 24 | 2E | 19,50 |
| 116H .. MP | 116 | 468,93 | 467,56 | - | - | - | - | - | - | - | - | 120 | 441 | 60 | 19 | 2E | 18,00 | 120 | 441 | 65 | 24 | 2E | 22,00 |
| 118H .. MP | 118 | 477,02 | 475,65 | - | - | - | - | - | - | - | - | 120 | 449 | 60 | 19 | 2E | 20,00 | 120 | 449 | 65 | 24 | 2E | 23,50 |
| 120H .. MP | 120 | 485,10 | 483,73 | - | - | - | - | - | - | - | - | 120 | 458 | 60 | 19 | 2E | 22,00 | 120 | 458 | 65 | 24 | 2E | 25,00 |
| 150H .. MP | 150 | 606,38 | 605,01 | - | - | - | - | - | - | - | - | 120 | 579 | 60 | 19 | 2E | 25,00 | 120 | 579 | 65 | 24 | 2E | 31,50 |
| 152H .. MP | 152 | 614,47 | 613,09 | - | - | - | - | - | - | - | - | 120 | 587 | 60 | 19 | 2E | 26,00 | 120 | 587 | 65 | 24 | 2E | 33,00 |

.. Belt width in 1/100 inch = 050,075 or 100



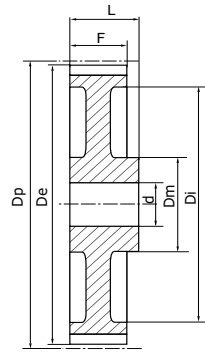
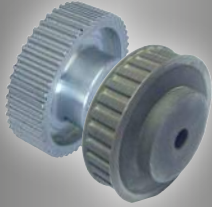
SOLID BUSH TIMING PULLEYS - H200 / H300

PITCH : 1/2" (12,7 mm)

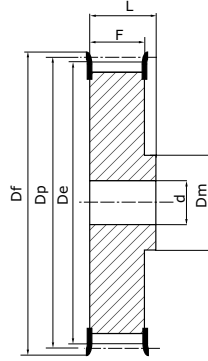
MATERIALS :

Steel C40 UNI 7845

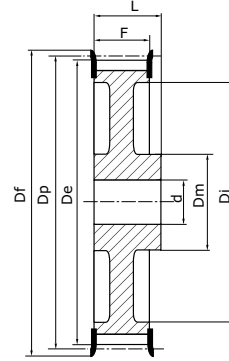
Cast iron G25 UNI 5007



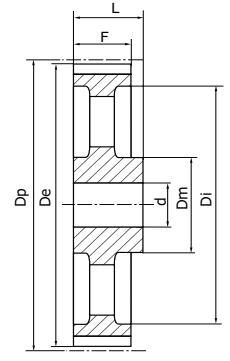
Type 2A
Light pulley not flanged



Type 2F
Flanged solid pulley



Type 2AF
Light flanged solid pulley



Type 2E
Hollowed pulley not flanged

Steel = from 14 to 42 teeth
Cast iron = from 44 to 156 teeth

| Reference | Z | Dp | De | Df | Flange N° | Dm | Di | H200 for belt with 50.8mm width (F=58,7) | | | | H300 for belt with 76.2mm width (F=85,7) | | | |
|-------------|-----|--------|--------|-----|-----------|-----|-----|--|----|------|-------|--|----|------|-------|
| | | | | | | | | L | d | Type | Kg | L | d | Type | Kg |
| 14 H .. FMP | 14 | 56,60 | 55,22 | 64 | F24 | 40 | - | 70 | 11 | 2F | 1,13 | 100 | 11 | 2F | 1,35 |
| 15 H .. FMP | 15 | 60,64 | 59,27 | 66 | F25 | 45 | - | 70 | 11 | 2F | 1,21 | 100 | 11 | 2F | 1,55 |
| 16 H .. FMP | 16 | 64,68 | 63,31 | 70 | F26 | 45 | - | 70 | 11 | 2F | 1,30 | 100 | 11 | 2F | 1,80 |
| 17 H .. FMP | 17 | 68,72 | 67,35 | 75 | F27 | 45 | - | 70 | 11 | 2F | 1,45 | 100 | 11 | 2F | 2,10 |
| 18 H .. FMP | 18 | 72,77 | 71,39 | 79 | F28 | 55 | - | 70 | 14 | 2F | 1,65 | 100 | 19 | 2F | 2,38 |
| 19 H .. FMP | 19 | 76,81 | 75,44 | 83 | F29 | 60 | - | 70 | 14 | 2F | 1,90 | 100 | 19 | 2F | 2,64 |
| 20 H .. FMP | 20 | 80,85 | 79,48 | 87 | F30 | 62 | - | 70 | 14 | 2F | 2,11 | 100 | 19 | 2F | 3,10 |
| 21 H .. FMP | 21 | 84,89 | 83,52 | 91 | F31 | 65 | - | 70 | 14 | 2F | 2,23 | 100 | 19 | 2F | 3,32 |
| 22 H .. FMP | 22 | 88,94 | 87,56 | 93 | F32 | 68 | - | 70 | 14 | 2F | 2,45 | 100 | 19 | 2F | 3,67 |
| 23 H .. FMP | 23 | 92,98 | 91,61 | 97 | F33 | 72 | - | 70 | 14 | 2F | 2,71 | 100 | 19 | 2F | 4,00 |
| 24 H .. FMP | 24 | 97,02 | 95,65 | 102 | F34 | 72 | - | 70 | 14 | 2F | 2,97 | 100 | 19 | 2F | 4,40 |
| 25 H .. FMP | 25 | 101,06 | 99,69 | 106 | F35 | 72 | - | 70 | 14 | 2F | 3,32 | 100 | 19 | 2F | 4,79 |
| 26 H .. FMP | 26 | 105,11 | 103,73 | 112 | F36 | 80 | - | 70 | 14 | 2F | 3,61 | 100 | 19 | 2F | 5,20 |
| 27 H .. FMP | 27 | 109,15 | 107,78 | 115 | F37 | 80 | - | 70 | 14 | 2F | 3,90 | 100 | 19 | 2F | 5,60 |
| 28 H .. FMP | 28 | 113,19 | 111,82 | 120 | F38 | 80 | - | 70 | 14 | 2F | 4,10 | 100 | 19 | 2F | 5,60 |
| 29 H .. FMP | 29 | 117,23 | 115,86 | 123 | F39 | 80 | - | 70 | 14 | 2F | 4,42 | 100 | 19 | 2F | 6,00 |
| 30 H .. FMP | 30 | 121,28 | 119,90 | 128 | F40 | 80 | - | 70 | 14 | 2F | 4,74 | 100 | 19 | 2F | 7,00 |
| 32 H .. FMP | 32 | 129,36 | 127,99 | 135 | F42 | 80 | - | 70 | 14 | 2F | 5,60 | 100 | 19 | 2F | 7,80 |
| 33 H .. FMP | 33 | 133,40 | 132,03 | 140 | F44 | 80 | - | 70 | 14 | 2F | 5,90 | 100 | 19 | 2F | 8,70 |
| 34 H .. FMP | 34 | 137,45 | 136,07 | 142 | F45 | 80 | - | 70 | 14 | 2F | 6,20 | 100 | 19 | 2F | 9,70 |
| 35 H .. FMP | 35 | 141,49 | 140,12 | 150 | F48 | 80 | - | 70 | 14 | 2F | 6,60 | 100 | 19 | 2F | 9,80 |
| 36 H .. FMP | 36 | 145,53 | 144,16 | 150 | F48 | 80 | 118 | 70 | 14 | 2AF | 7,10 | 100 | 19 | 2AF | 9,90 |
| 38 H .. FMP | 38 | 153,62 | 152,24 | 158 | F50 | 80 | 126 | 70 | 14 | 2AF | 7,80 | 100 | 19 | 2AF | 11,00 |
| 40 H .. FMP | 40 | 161,70 | 160,33 | 168 | F52 | 80 | 134 | 70 | 14 | 2AF | 8,40 | 100 | 19 | 2AF | 12,20 |
| 44 H .. FMP | 44 | 177,87 | 176,50 | 184 | F55 | 80 | 150 | 70 | 19 | 2AF | 10,50 | 100 | 24 | 2AF | 15,00 |
| 45 H .. FMP | 45 | 181,91 | 180,54 | 192 | F57 | 80 | 154 | 70 | 19 | 2AF | 11,30 | 100 | 24 | 2AF | 15,20 |
| 48 H .. FMP | 48 | 194,04 | 192,67 | 200 | F59 | 90 | 166 | 75 | 24 | 2AF | 8,60 | 100 | 24 | 2AF | 11,40 |
| 49 H .. MP | 49 | 198,08 | 196,71 | - | - | 90 | 170 | 75 | 24 | 2A | 7,60 | 100 | 24 | 2A | 9,40 |
| 50 H .. MP | 50 | 202,13 | 200,75 | - | - | 90 | 174 | 75 | 24 | 2A | 8,30 | 100 | 24 | 2A | 10,60 |
| 52 H .. MP | 52 | 210,21 | 208,84 | - | - | 90 | 182 | 75 | 24 | 2A | 8,50 | 100 | 24 | 2A | 11,80 |
| 58 H .. MP | 58 | 234,47 | 233,09 | - | - | 90 | 207 | 75 | 24 | 2E | 10,00 | 100 | 24 | 2E | 12,20 |
| 60 H .. MP | 60 | 242,55 | 241,18 | - | - | 90 | 215 | 75 | 24 | 2E | 11,00 | 100 | 24 | 2E | 13,00 |
| 70 H .. MP | 70 | 282,98 | 281,61 | - | - | 100 | 255 | 75 | 28 | 2E | 12,50 | 100 | 28 | 2E | 16,50 |
| 72 H .. MP | 72 | 291,06 | 289,69 | - | - | 100 | 263 | 75 | 28 | 2E | 14,00 | 100 | 28 | 2E | 19,00 |
| 82 H .. MP | 82 | 331,49 | 330,12 | - | - | 100 | 304 | 75 | 28 | 2E | 13,50 | 100 | 28 | 2E | 18,00 |
| 84 H .. MP | 84 | 339,57 | 338,20 | - | - | 100 | 312 | 75 | 28 | 2E | 15,00 | 100 | 28 | 2E | 20,00 |
| 94 H .. MP | 94 | 380,00 | 378,63 | - | - | 120 | 352 | 75 | 28 | 2E | 18,90 | 100 | 28 | 2E | 25,50 |
| 96 H .. MP | 96 | 388,08 | 386,71 | - | - | 120 | 360 | 75 | 28 | 2E | 20,30 | 100 | 28 | 2E | 27,00 |
| 106 H .. MP | 106 | 428,51 | 427,14 | - | - | 120 | 401 | 75 | 28 | 2E | 22,50 | 100 | 28 | 2E | 27,90 |
| 116 H .. MP | 116 | 468,93 | 467,56 | - | - | 120 | 441 | 75 | 28 | 2E | 24,70 | 100 | 28 | 2E | 28,50 |
| 118 H .. MP | 118 | 477,02 | 475,65 | - | - | 120 | 449 | 75 | 28 | 2E | 26,00 | 100 | 28 | 2E | 31,00 |
| 120 H .. MP | 120 | 485,10 | 483,73 | - | - | 120 | 458 | 75 | 28 | 2E | 28,00 | 100 | 28 | 2E | 33,00 |
| 150 H .. MP | 150 | 606,38 | 605,01 | - | - | 120 | 579 | 75 | 28 | 2E | 32,50 | 100 | 28 | 2E | 38,00 |
| 152 H .. MP | 152 | 614,47 | 613,09 | - | - | 120 | 587 | 75 | 28 | 2E | 35,00 | 100 | 28 | 2E | 40,00 |
| 154 H .. MP | 154 | 622,55 | 621,18 | - | - | 120 | 595 | 75 | 28 | 2E | 38,00 | 100 | 28 | 2E | 42,00 |
| 156 H .. MP | 156 | 630,64 | 629,26 | - | - | 120 | 603 | 75 | 28 | 2E | 41,00 | 100 | 28 | 2E | 44,20 |

.. Belt width in 1/100 inch = 200 or 300.



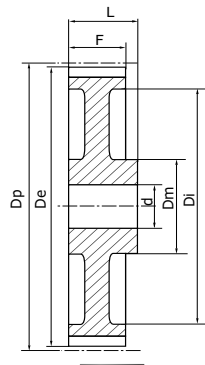
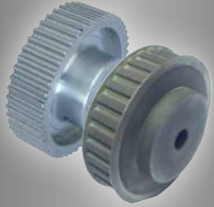
SOLID BUSH TIMING PULLEYS - XH200 / XH300 / XH400

PITCH : 7/8" (22,225 mm)

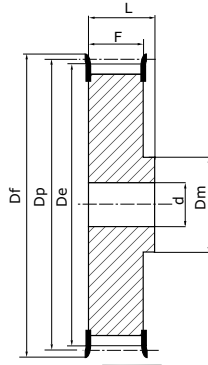
MATERIALS :

Steel C40 UNI 7845

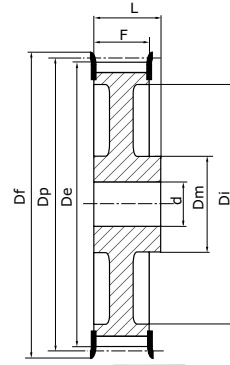
Cast iron G25 UNI 5007



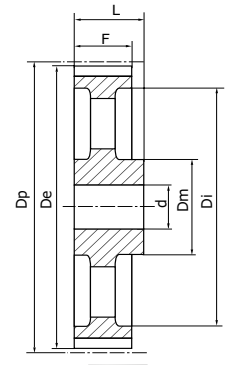
Type 2A
Light pulley not flanged



Type 2F
Flanged solid pulley



Type 2AF
Light flanged solid pulley



Type 2E
Hollowed pulley not flanged

Steel = from 18 to 34 teeth
Cast iron = from 38 to 120 teeth

| Reference | Z | Dp | De | Df | Flange N° | XH200 for belt with 50.8mm width (F=65) | | | | | | XH300 for belt with 76.2mm width (F=90,5) | | | | | | XH400 for belt with 101.6mm width (F=118) | | | | | |
|-------------|-----|--------|--------|-----|-----------|--|-----|-----|----|------|-------|--|-----|-----|----|------|--------|--|-----|-----|----|------|--------|
| | | | | | | Dm | Di | L | d | Type | Kg | Dm | Di | L | d | Type | Kg | Dm | Di | L | d | Type | Kg |
| 18 XH.. FMP | 18 | 127,34 | 124,55 | 140 | F44 | 100 | - | 80 | 24 | 2F | 5,90 | 100 | - | 110 | 28 | 2F | 8,90 | 100 | - | 132 | 32 | 2F | 9,50 |
| 19 XH.. FMP | 19 | 134,41 | 131,62 | 146 | F46 | 100 | - | 80 | 24 | 2F | 6,50 | 100 | - | 110 | 28 | 2F | 9,20 | 100 | - | 132 | 32 | 2F | 10,65 |
| 20 XH.. FMP | 20 | 141,49 | 138,69 | 155 | F50 | 100 | - | 80 | 24 | 2F | 7,20 | 100 | - | 110 | 28 | 2F | 9,50 | 100 | - | 132 | 32 | 2F | 11,80 |
| 21 XH.. FMP | 21 | 148,56 | 145,77 | 160 | F51 | 110 | - | 80 | 24 | 2F | 7,90 | 110 | - | 110 | 28 | 2F | 10,80 | 110 | - | 132 | 32 | 2F | 13,20 |
| 22 XH.. FMP | 22 | 155,64 | 152,84 | 168 | F52 | 110 | - | 80 | 24 | 2F | 8,70 | 110 | - | 110 | 28 | 2F | 12,10 | 110 | - | 132 | 32 | 2F | 14,73 |
| 24 XH.. FMP | 24 | 169,79 | 166,99 | 188 | F81 | 120 | - | 80 | 24 | 2F | 10,60 | 120 | - | 110 | 28 | 2F | 14,10 | 120 | - | 132 | 32 | 2F | 17,80 |
| 25 XH.. FMP | 25 | 176,86 | 174,07 | 192 | F56 | 120 | - | 80 | 24 | 2F | 11,40 | 120 | - | 110 | 28 | 2F | 15,40 | 120 | - | 132 | 32 | 2F | 19,40 |
| 26 XH.. FMP | 26 | 183,94 | 181,14 | 200 | F59 | 120 | - | 80 | 24 | 2F | 12,20 | 120 | - | 110 | 28 | 2F | 16,70 | 120 | - | 132 | 32 | 2F | 21,10 |
| 27 XH.. FMP | 27 | 191,01 | 188,22 | 200 | F59 | 120 | - | 80 | 24 | 2F | 13,50 | 120 | - | 110 | 28 | 2F | 18,40 | 120 | - | 132 | 32 | 2F | 22,80 |
| 28 XH.. FMP | 28 | 198,08 | 195,29 | 212 | F61 | 150 | - | 80 | 24 | 2F | 14,80 | 150 | - | 110 | 28 | 2F | 20,20 | 150 | - | 132 | 32 | 2F | 22,60 |
| 30 XH.. FMP | 30 | 212,23 | 209,44 | 226 | F62 | 150 | - | 80 | 24 | 2F | 16,60 | 150 | - | 110 | 28 | 2F | 23,80 | 150 | - | 132 | 32 | 2F | 28,70 |
| 32 XH.. FMP | 32 | 226,38 | 223,59 | 240 | F64 | 150 | 184 | 80 | 24 | 2AF | 17,90 | 150 | - | 110 | 28 | 2AF | 26,60 | 150 | - | 132 | 32 | 2F | 32,50 |
| 34 XH.. FMP | 34 | 240,53 | 237,74 | 256 | F66 | 150 | 198 | 80 | 24 | 2AF | 18,20 | 150 | 198 | 110 | 28 | 2AF | 29,40 | 150 | - | 132 | 32 | 2F | 36,50 |
| 38 XH.. FMP | 38 | 268,83 | 266,03 | 286 | F69 | 150 | 227 | 100 | 28 | 2AF | 19,00 | 175 | 227 | 120 | 32 | 2AF | 32,00 | 150 | 227 | 132 | 32 | 2AF | 40,00 |
| 40 XH.. FMP | 40 | 282,98 | 280,18 | 296 | F70 | 150 | 241 | 100 | 28 | 2AF | 22,10 | 175 | 241 | 120 | 32 | 2AF | 37,50 | 150 | 241 | 132 | 32 | 2AF | 32,90 |
| 46 XH.. MP | 46 | 325,42 | 322,63 | - | - | 150 | 283 | 100 | 28 | 2A | 26,00 | 175 | 283 | 120 | 32 | 2A | 32,50 | 175 | 283 | 132 | 32 | 2A | 38,00 |
| 48 XH.. MP | 48 | 339,57 | 336,78 | - | - | 150 | 297 | 100 | 28 | 2A | 27,60 | 175 | 297 | 120 | 32 | 2A | 34,00 | 175 | 297 | 132 | 32 | 2A | 41,00 |
| 50 XH.. MP | 50 | 410,32 | 407,52 | - | - | 150 | 368 | 100 | 28 | 2A | 27,60 | 175 | 368 | 120 | 32 | 2A | 37,00 | 175 | 368 | 132 | 32 | 2A | 46,00 |
| 60 XH.. MP | 60 | 424,47 | 421,67 | - | - | 150 | 382 | 100 | 28 | 2A | 22,10 | 175 | 382 | 120 | 32 | 2A | 39,00 | 175 | 382 | 132 | 32 | 2A | 47,00 |
| 70 XH.. MP | 70 | 495,21 | 492,42 | - | - | 190 | 453 | 100 | 28 | 2E | 39,00 | 175 | 453 | 120 | 32 | 2E | 53,00 | 175 | 453 | 132 | 32 | 2E | 66,00 |
| 72 XH.. MP | 72 | 509,36 | 506,56 | - | - | 190 | 467 | 100 | 28 | 2E | 42,00 | 175 | 467 | 120 | 32 | 2E | 55,00 | 175 | 467 | 132 | 32 | 2E | 68,00 |
| 78 XH.. MP | 78 | 551,81 | 549,01 | - | - | 190 | 510 | 100 | 28 | 2E | 48,00 | 175 | 510 | 120 | 32 | 2E | 62,00 | 175 | 510 | 132 | 32 | 2E | 71,00 |
| 80 XH.. MP | 80 | 565,95 | 563,16 | - | - | 190 | 524 | 100 | 28 | 2E | 51,00 | 175 | 524 | 120 | 32 | 2E | 64,00 | 175 | 524 | 132 | 32 | 2E | 73,00 |
| 82 XH.. MP | 82 | 580,1 | 577,31 | - | - | 190 | 538 | 100 | 28 | 2E | 54,00 | 175 | 538 | 120 | 32 | 2E | 66,00 | 175 | 538 | 132 | 32 | 2E | 74,50 |
| 84 XH.. MP | 84 | 594,25 | 591,46 | - | - | 190 | 552 | 100 | 28 | 2E | 57,00 | 175 | 552 | 120 | 32 | 2E | 69,00 | 175 | 552 | 132 | 32 | 2E | 78,00 |
| 94 XH.. MP | 94 | 665 | 662,2 | - | - | 190 | 623 | 100 | 28 | 2E | 64,00 | 175 | 623 | 120 | 32 | 2E | 81,00 | 175 | 623 | 132 | 32 | 2E | 86,00 |
| 96 XH.. MP | 96 | 679,15 | 676,35 | - | - | 190 | 637 | 100 | 28 | 2E | 67,00 | 175 | 637 | 120 | 32 | 2E | 85,00 | 175 | 637 | 132 | 32 | 2E | 98,00 |
| 118 XH.. MP | 118 | 834,78 | 831,99 | - | - | 190 | 792 | 100 | 28 | 2E | 88,00 | 175 | 792 | 120 | 32 | 2E | 116,00 | 175 | 792 | 132 | 32 | 2E | 142,00 |
| 120 XH.. MP | 120 | 848,93 | 846,14 | - | - | 190 | 806 | 100 | 28 | 2E | 90,00 | 175 | 806 | 120 | 32 | 2E | 121,00 | 175 | 806 | 132 | 32 | 2E | 156,00 |

.. Belt width in 1/100 inch = 200, 300 or 400.



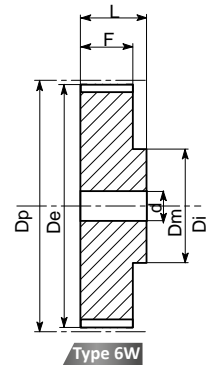
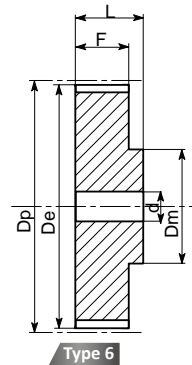
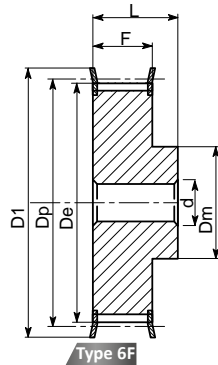
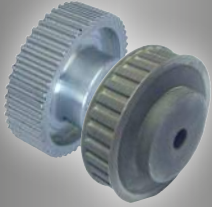
SOLID BUSH TIMING PULLEYS - XXH200 / XXH300 / XXH400 / XXH500

PITCH : 1" X1/4 (31,750 mm)

MATERIALS :

Steel C40 UNI 7845

Cast iron G25 UNI 5007



Steel = from 18 to 26 teeth
Cast iron = from 27 to 340 teeth

| Reference | Z | Dp | De | Df | Flange N° | XXH200 for belt with 50.8mm width (F=64,2) | | | | | XXH300 for belt with 76.2mm width (F=91,4) | | | | | | |
|--------------|----|--------|--------|-----|-----------|--|-----|-----|----|------|--|-----|-----|-----|----|------|------|
| | | | | | | Dm | Di | L | d | Type | Kg | Dm | Di | L | d | Type | Kg |
| 18 XXH.. FMP | 18 | 181,91 | 178,87 | 198 | F58 | 140 | - | 100 | 28 | 6F | 14,2 | 140 | - | 110 | 28 | 6F | 16,0 |
| 19 XXH.. FMP | 19 | 192,02 | 188,97 | 205 | F60 | 140 | - | 100 | 28 | 6F | 15,8 | 140 | - | 110 | 28 | 6F | 18,4 |
| 20 XXH.. FMP | 20 | 202,13 | 199,08 | 212 | F61 | 150 | - | 100 | 28 | 6F | 17,3 | 150 | - | 110 | 28 | 6F | 20,4 |
| 21 XXH.. FMP | 21 | 212,23 | 202,19 | 226 | F62 | 150 | - | 100 | 28 | 6F | 18,5 | 150 | - | 110 | 28 | 6F | 22,0 |
| 22 XXH.. FMP | 22 | 222,34 | 219,29 | 240 | F64 | 150 | - | 100 | 28 | 6F | 20,0 | 150 | - | 110 | 28 | 6F | 25,0 |
| 24 XXH.. FMP | 24 | 242,55 | 239,50 | - | - | 150 | - | 100 | 28 | 6 | 23,6 | 150 | - | 110 | 28 | 6 | 29,2 |
| 25 XXH.. FMP | 25 | 252,66 | 249,61 | - | - | 150 | 196 | 100 | 28 | 6W | 18,0 | 150 | 196 | 110 | 28 | 6W | 24,6 |
| 26 XXH.. FMP | 26 | 262,76 | 259,76 | - | - | 150 | 207 | 100 | 28 | 6W | 20,0 | 150 | 207 | 110 | 28 | 6W | 27,0 |
| 27 XXH.. FMP | 27 | 272,87 | 269,82 | - | - | 150 | 216 | 100 | 28 | 6W | 24,0 | 150 | 216 | 110 | 28 | 6W | 29,0 |
| 30 XXH.. FMP | 30 | 303,19 | 300,14 | - | - | 150 | 247 | 100 | 28 | 6W | 26,0 | 150 | 247 | 110 | 28 | 6W | 31,0 |
| 34 XXH.. FMP | 34 | 343,62 | 340,57 | - | - | 150 | 287 | 100 | 28 | 6W | 31,8 | 150 | 287 | 110 | 28 | 6W | 39,0 |

Steel = from 18 to 26 teeth
Cast iron = from 27 to 340 teeth

| Reference | Z | Dp | De | Df | Flange N° | XXH400 for belt with 101.6mm width (F=120,7) | | | | | XXH500 for belt with 127mm width (F=145,3) | | | | | | |
|--------------|----|--------|--------|-----|-----------|--|-----|-----|----|------|--|-----|-----|-----|----|------|------|
| | | | | | | Dm | Di | L | d | Type | Kg | Dm | Di | L | d | Type | Kg |
| 18 XXH.. FMP | 18 | 181,91 | 178,87 | 198 | F58 | 140 | - | 140 | 32 | 6F | 20,8 | 140 | - | 168 | 32 | 6F | 24,0 |
| 19 XXH.. FMP | 19 | 192,02 | 188,97 | 205 | F60 | 140 | - | 140 | 32 | 6F | 24,0 | 140 | - | 168 | 32 | 6F | 28,0 |
| 20 XXH.. FMP | 20 | 202,13 | 199,08 | 212 | F61 | 150 | - | 140 | 32 | 6F | 26,0 | 150 | - | 168 | 32 | 6F | 31,4 |
| 21 XXH.. FMP | 21 | 212,23 | 202,19 | 226 | F62 | 150 | - | 140 | 32 | 6F | 28,5 | 150 | - | 168 | 32 | 6F | 34,0 |
| 22 XXH.. FMP | 22 | 222,34 | 219,29 | 240 | F64 | 150 | - | 140 | 32 | 6F | 31,6 | 150 | - | 168 | 32 | 6F | 38,3 |
| 24 XXH.. FMP | 24 | 242,55 | 239,50 | - | - | 150 | - | 140 | 32 | 6 | 35,0 | 150 | - | 168 | 32 | 6 | 45,0 |
| 25 XXH.. FMP | 25 | 252,66 | 249,61 | - | - | 150 | 196 | 140 | 32 | 6W | 28,0 | 150 | 196 | 168 | 32 | 6W | 36,0 |
| 26 XXH.. FMP | 26 | 262,76 | 259,76 | - | - | 150 | 207 | 140 | 32 | 6W | 32,4 | 150 | 207 | 168 | 32 | 6W | 37,5 |
| 27 XXH.. FMP | 27 | 272,87 | 269,82 | - | - | 150 | 216 | 140 | 32 | 6W | 34,0 | 150 | 216 | 168 | 32 | 6W | 42,0 |
| 30 XXH.. FMP | 30 | 303,19 | 300,14 | - | - | 185 | 247 | 140 | 32 | 6W | 36,0 | 215 | 247 | 168 | 32 | 6W | 46,8 |
| 34 XXH.. FMP | 34 | 343,62 | 340,57 | - | - | 185 | 287 | 140 | 32 | 6W | 47,6 | 215 | 287 | 168 | 32 | 6W | 57,0 |

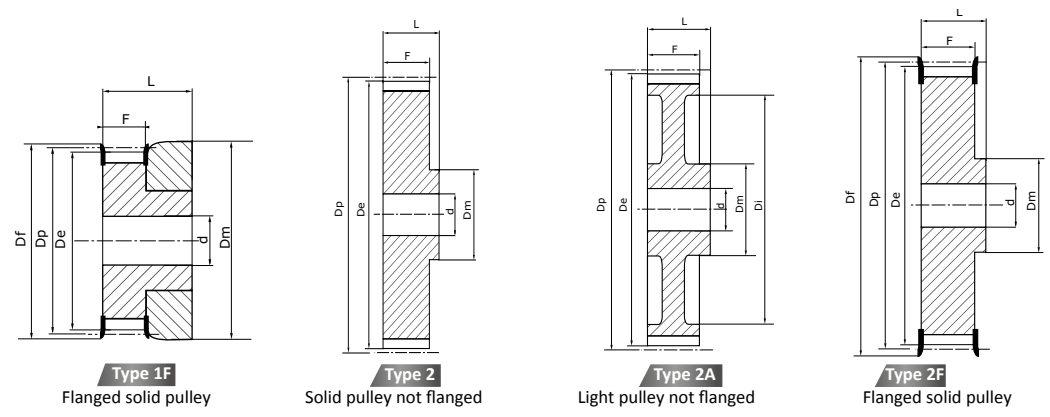
.. Belt width in 1/100 inch = 200, 300, 400 or 500.



Dimensions in mm

SOLID BUSH TIMING PULLEYS - «HTD» 3M / 5M

3M - PITCH : 3 mm
 5M - PITCH : 5 mm
MATERIALS :
 Steel C40 UNI 7845
 Aluminum 6082T6 UNI 9006/4



Aluminum = from 10 to 72 teeth

| Reference | Z | Dp | De | Df | Flange N° | Dm | 3M-09 for belt with 9mm width | | | | | 3M-15 for belt with 15mm width | | | | |
|---------------|----|-------|-------|------|-----------|------|----------------------------------|------|---|------|-------|-----------------------------------|----|---|------|-------|
| | | | | | | | F | L | d | Type | Kg | F | L | d | Type | Kg |
| 10 03M .. FMP | 10 | 9,55 | 8,79 | 13 | F01 | 13 | 10,2 | 17,5 | 4 | 1F | 0,004 | 17 | 22 | 4 | 1F | 0,002 |
| 12 03M .. FMP | 12 | 11,46 | 10,70 | 15 | F02 | 15 | 10,2 | 17,5 | 4 | 1F | 0,002 | 17 | 22 | 4 | 1F | 0,008 |
| 14 03M .. FMP | 14 | 13,37 | 12,61 | 16 | F03 | 16 | 10,2 | 17,5 | 4 | 1F | 0,007 | 17 | 22 | 4 | 1F | 0,010 |
| 15 03M .. FMP | 15 | 14,32 | 13,56 | 17,5 | F04 | 17,5 | 10,2 | 17,5 | 4 | 1F | 0,008 | 17 | 22 | 4 | 1F | 0,012 |
| 16 03M .. FMP | 16 | 15,28 | 14,52 | 18 | F05 | 18 | 12,8 | 20,6 | 4 | 2F | 0,007 | 19,05 | 22 | 4 | 2F | 0,010 |
| 18 03M .. FMP | 18 | 17,19 | 16,43 | 20 | F06 | 11 | 12,8 | 20,6 | 6 | 2F | 0,008 | 19,05 | 22 | 6 | 2F | 0,012 |
| 20 03M .. FMP | 20 | 19,10 | 18,34 | 23 | F07 | 13 | 12,8 | 20,6 | 6 | 2F | 0,010 | 19,05 | 22 | 6 | 2F | 0,014 |
| 21 03M .. FMP | 21 | 20,05 | 19,29 | 25 | F08 | 13 | 12,8 | 20,6 | 6 | 2F | 0,013 | 19,05 | 22 | 6 | 2F | 0,012 |
| 22 03M .. FMP | 22 | 21,01 | 20,25 | 25 | F08 | 13 | 12,8 | 20,6 | 6 | 2F | 0,014 | 19,05 | 22 | 6 | 2F | 0,018 |
| 24 03M .. FMP | 24 | 22,92 | 22,16 | 25 | F08 | 13 | 12,8 | 20,6 | 6 | 2F | 0,012 | 19,05 | 22 | 6 | 2F | 0,020 |
| 26 03M .. FMP | 26 | 24,83 | 24,07 | 28 | F09 | 16 | 12,8 | 20,6 | 6 | 2F | 0,018 | 19,05 | 22 | 6 | 2F | 0,027 |
| 28 03M .. FMP | 28 | 26,74 | 25,98 | 32 | F10 | 18 | 12,8 | 20,6 | 6 | 2F | 0,024 | 19,05 | 22 | 6 | 2F | 0,030 |
| 30 03M .. FMP | 30 | 28,65 | 27,89 | 32 | F10 | 20 | 12,8 | 20,6 | 6 | 2F | 0,028 | 19,05 | 22 | 6 | 2F | 0,035 |
| 32 03M .. FMP | 32 | 30,56 | 29,80 | 36 | F12 | 22 | 12,8 | 20,6 | 6 | 2F | 0,032 | 19,05 | 22 | 6 | 2F | 0,042 |
| 36 03M .. FMP | 36 | 34,38 | 33,62 | 38 | F14 | 26 | 13,4 | 22,2 | 6 | 2F | 0,045 | 20 | 30 | 6 | 2F | 0,020 |
| 40 3M .. FMP | 40 | 38,20 | 37,44 | 42 | F15 | 28 | 13,4 | 22,2 | 6 | 2F | 0,055 | 20 | 30 | 6 | 2F | 0,075 |
| 44 03M .. FMP | 44 | 42,02 | 41,26 | 48 | F18 | 33 | 13,4 | 22,2 | 6 | 2F | 0,074 | 20 | 30 | 6 | 2F | 0,095 |
| 48 03M .. MP | 48 | 45,84 | 45,08 | - | - | 33 | 13,4 | 22,2 | 8 | 2 | 0,074 | 20 | 30 | 8 | 2 | 0,103 |
| 60 03M .. MP | 60 | 57,30 | 56,54 | - | - | 33 | 13,4 | 22,2 | 8 | 2 | 0,102 | 20 | 30 | 8 | 2 | 0,150 |
| 72 03M .. MP | 72 | 68,75 | 67,99 | - | - | 33 | 13,4 | 22,2 | 8 | 2 | 0,145 | 20 | 30 | 8 | 2 | 0,212 |

.. Belt width in mm = 09 or 15

Steel = from 12 to 40 teeth

Aluminum = from 44 to 72 teeth

| Reference | Z | Dp | De | Df | Flange N° | Dm | Di | 5M-09 for belt with 9mm width | | | | | 5M-15 for belt with 15mm width | | | | | 5M-25 for belt with 25mm width | | | | |
|---------------|----|--------|--------|----|-----------|------|-----|----------------------------------|------|---|------|-------|-----------------------------------|----|---|------|-------|-----------------------------------|------|---|------|-------|
| | | | | | | | | F | L | d | Type | Kg | F | L | d | Type | Kg | F | L | d | Type | Kg |
| 12 05M .. FMP | 12 | 19,10 | 17,96 | 23 | F07 | 12 | - | 14,5 | 20 | 4 | 2F | 0,028 | 20,5 | 26 | 4 | 2F | 0,034 | 30,5 | 36 | 4 | 2F | 0,050 |
| 14 05M .. FMP | 14 | 22,28 | 21,14 | 25 | F08 | 13 | - | 14,5 | 20 | 6 | 2F | 0,034 | 20,5 | 26 | 6 | 2F | 0,046 | 30,5 | 36 | 6 | 2F | 0,070 |
| 15 05M .. FMP | 15 | 23,87 | 22,73 | 28 | F09 | 16 | - | 14,5 | 20 | 6 | 2F | 0,042 | 20,5 | 26 | 6 | 2F | 0,056 | 30,5 | 36 | 6 | 2F | 0,080 |
| 16 05M .. FMP | 16 | 25,46 | 24,32 | 28 | F09 | 16,5 | - | 14,5 | 20 | 6 | 2F | 0,050 | 20,5 | 26 | 6 | 2F | 0,064 | 30,5 | 36 | 6 | 2F | 0,100 |
| 18 05M .. FMP | 18 | 28,65 | 27,51 | 32 | F10 | 20 | - | 14,5 | 20 | 6 | 2F | 0,070 | 20,5 | 26 | 6 | 2F | 0,086 | 30,5 | 36 | 6 | 2F | 0,120 |
| 20 05M .. FMP | 20 | 31,83 | 30,69 | 36 | F12 | 23 | - | 14,5 | 22,5 | 6 | 2F | 0,094 | 20,5 | 26 | 6 | 2F | 0,112 | 30,5 | 36,5 | 6 | 2F | 0,160 |
| 21 05M .. FMP | 21 | 33,42 | 32,28 | 38 | F14 | 24 | - | 14,5 | 22,5 | 6 | 2F | 0,110 | 20,5 | 26 | 6 | 2F | 0,130 | 30,5 | 38,5 | 6 | 2F | 0,190 |
| 22 05M .. FMP | 22 | 35,01 | 33,87 | 38 | F14 | 25,5 | - | 14,5 | 22,5 | 6 | 2F | 0,118 | 20,5 | 26 | 6 | 2F | 0,140 | 30,5 | 38,5 | 6 | 2F | 0,210 |
| 24 05M .. FMP | 24 | 38,20 | 37,06 | 42 | F15 | 27 | - | 14,5 | 22,5 | 6 | 2F | 0,145 | 20,5 | 28 | 6 | 2F | 0,180 | 30,5 | 38,5 | 6 | 2F | 0,250 |
| 26 05M .. FMP | 26 | 41,38 | 40,24 | 44 | F17 | 30 | - | 14,5 | 22,5 | 6 | 2F | 0,170 | 20,5 | 28 | 6 | 2F | 0,220 | 30,5 | 38,5 | 6 | 2F | 0,300 |
| 28 05M .. FMP | 28 | 44,56 | 43,42 | 48 | F18 | 30,5 | - | 14,5 | 22,5 | 6 | 2F | 0,200 | 20,5 | 28 | 6 | 2F | 0,250 | 30,5 | 38,5 | 6 | 2F | 0,350 |
| 30 05M .. FMP | 30 | 47,75 | 46,60 | 51 | F19 | 35 | - | 14,5 | 22,5 | 6 | 2F | 0,236 | 20,5 | 28 | 6 | 2F | 0,300 | 30,5 | 38,5 | 6 | 2F | 0,420 |
| 32 05M .. FMP | 32 | 50,93 | 49,79 | 54 | F20 | 38 | - | 14,5 | 22,5 | 8 | 2F | 0,210 | 20,5 | 28 | 8 | 2F | 0,350 | 30,5 | 38,5 | 8 | 2F | 0,480 |
| 36 05M .. FMP | 36 | 57,30 | 56,16 | 60 | F22 | 38 | - | 14,5 | 22,5 | 8 | 2F | 0,324 | 20,5 | 28 | 8 | 2F | 0,426 | 30,5 | 38,5 | 8 | 2F | 0,590 |
| 40 05M .. FMP | 40 | 63,66 | 62,52 | 70 | F26 | 38 | - | 14,5 | 22,5 | 8 | 2F | 0,400 | 20,5 | 28 | 8 | 2F | 0,520 | 30,5 | 38,5 | 8 | 2F | 0,740 |
| 44 05M .. MP | 44 | 70,03 | 68,89 | - | - | 38 | 54 | 14,5 | 25,5 | 8 | 2A | 0,170 | 20,5 | 30 | 8 | 2A | 0,225 | 30,5 | 40,5 | 8 | 2A | 0,320 |
| 48 05M .. MP | 48 | 76,39 | 75,25 | - | - | 45 | 61 | 14,5 | 25,5 | 8 | 2A | 0,182 | 20,5 | 30 | 8 | 2A | 0,187 | 30,5 | 40,5 | 8 | 2A | 0,275 |
| 60 05M .. MP | 60 | 95,46 | 94,35 | - | - | 45 | 80 | 14,5 | 25,5 | 8 | 2A | 0,230 | 20,5 | 30 | 8 | 2A | 0,305 | 30,5 | 40,5 | 8 | 2A | 0,435 |
| 72 05M .. MP | 72 | 114,59 | 113,45 | - | - | 45 | 100 | 14,5 | 25,5 | 8 | 2A | 0,270 | 20,5 | 30 | 8 | 2A | 0,305 | 30,5 | 40,5 | 8 | 2A | 0,525 |

.. Belt width in mm = 09, 15 or 25



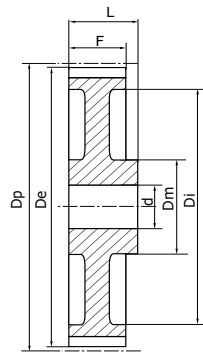
SOLID BUSH TIMING PULLEYS -«HTD» 8M

PITCH : 8 mm

MATERIALS :

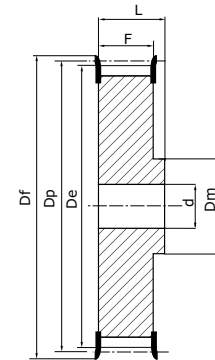
Steel C40 UNI 7845

Cast iron G25 UNI 5007



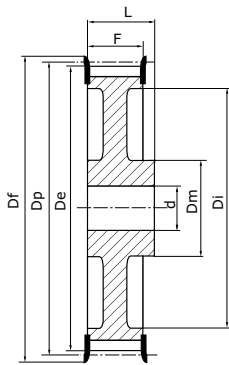
Type 2A

Light pulley not flanged



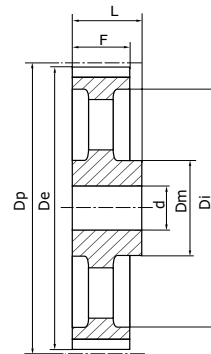
Type 2F

Flanged solid pulley



Type 2AF

Light flanged solid pulley



Type 2E

Hollowed pulley not flanged

Steel = from 22 to 72 teeth
Cast iron = from 80 to 192 teeth

8M-20
for belt with 20mm width
(F=28)

8M-30
for belt with 30mm width
(F=38)

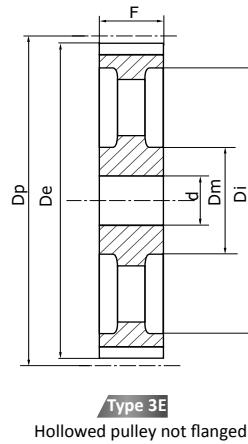
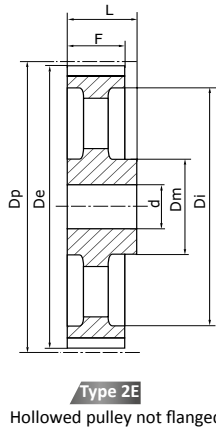
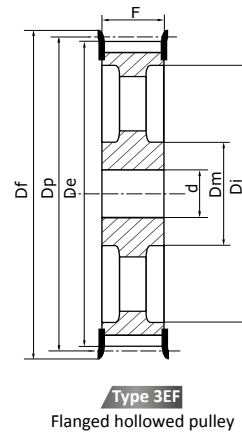
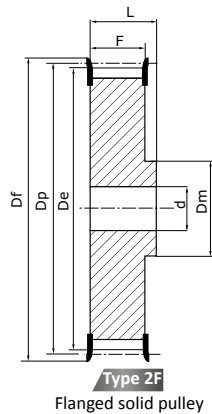
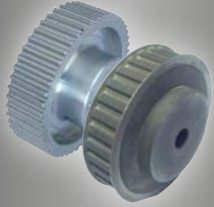
| Reference | Z | Dp | De | Df | Flange N° | Dm | Di | L | d | Type | Kg | Di | L | d | Type | Kg |
|---------------|-----|--------|--------|-----|-----------|-----|-----|----|----|------|-------|-----|----|----|------|-------|
| 22 08M .. FMP | 22 | 56,02 | 54,65 | 60 | F23 | 43 | - | 38 | 12 | 2F | 0,54 | - | 48 | 12 | 2F | 0,69 |
| 24 08M .. FMP | 24 | 61,12 | 59,75 | 66 | F26 | 45 | - | 38 | 12 | 2F | 0,65 | - | 48 | 12 | 2F | 0,84 |
| 26 08M .. FMP | 26 | 66,21 | 64,84 | 70 | F27 | 48 | - | 38 | 12 | 2F | 0,80 | - | 48 | 12 | 2F | 1,00 |
| 28 08M .. FMP | 28 | 71,30 | 70,08 | 75 | F28 | 50 | - | 38 | 15 | 2F | 0,87 | - | 48 | 15 | 2F | 1,12 |
| 30 08M .. FMP | 30 | 76,39 | 75,13 | 83 | F30 | 55 | - | 38 | 15 | 2F | 1,02 | - | 48 | 15 | 2F | 1,32 |
| 32 08M .. FMP | 32 | 81,49 | 80,16 | 87 | F31 | 60 | - | 38 | 15 | 2F | 1,20 | - | 48 | 15 | 2F | 1,53 |
| 34 08M .. FMP | 34 | 86,58 | 85,22 | 91 | F32 | 70 | - | 38 | 15 | 2F | 1,40 | - | 48 | 15 | 2F | 1,80 |
| 36 08M .. FMP | 36 | 91,67 | 90,30 | 97 | F34 | 75 | - | 38 | 15 | 2F | 1,55 | - | 48 | 15 | 2F | 1,99 |
| 38 08M .. FMP | 38 | 96,77 | 95,39 | 102 | F35 | 75 | - | 38 | 15 | 2F | 1,65 | - | 48 | 15 | 2F | 2,27 |
| 40 08M .. FMP | 40 | 101,86 | 100,49 | 106 | F37 | 75 | - | 38 | 15 | 2F | 1,74 | - | 48 | 15 | 2F | 2,40 |
| 44 08M .. FMP | 44 | 112,05 | 110,67 | 120 | F39 | 75 | - | 38 | 15 | 2F | 2,10 | - | 48 | 15 | 2F | 2,80 |
| 48 08M .. FMP | 48 | 122,23 | 120,86 | 128 | F40 | 75 | - | 38 | 15 | 2F | 2,44 | - | 48 | 15 | 2F | 3,20 |
| 56 08M .. FMP | 56 | 142,60 | 141,23 | 150 | F43 | 80 | 116 | 38 | 15 | 2AF | 2,60 | 116 | 48 | 15 | 2AF | 3,60 |
| 64 08M .. FMP | 64 | 162,97 | 161,60 | 168 | F45 | 80 | 137 | 38 | 15 | 2AF | 2,90 | 137 | 48 | 15 | 2AF | 4,30 |
| 72 08M .. FMP | 72 | 183,35 | 181,97 | 192 | F48 | 80 | 158 | 38 | 15 | 2AF | 3,10 | 158 | 48 | 15 | 2AF | 4,80 |
| 80 08M .. MP | 80 | 203,72 | 202,35 | - | - | 90 | 180 | 38 | 15 | 2A | 3,80 | 180 | 48 | 15 | 2A | 5,10 |
| 90 08M .. MP | 90 | 229,18 | 227,81 | - | - | 90 | 204 | 38 | 15 | 2E | 4,20 | 204 | 48 | 15 | 2E | 5,70 |
| 112 08M .. MP | 112 | 285,21 | 283,83 | - | - | 90 | 254 | 38 | 18 | 2E | 5,20 | 254 | 48 | 18 | 2E | 6,80 |
| 144 08M .. MP | 144 | 366,69 | 365,32 | - | - | 90 | 336 | 38 | 20 | 2E | 7,50 | 336 | 48 | 20 | 2E | 9,30 |
| 168 08M .. MP | 168 | 427,81 | 426,44 | - | - | 100 | 400 | 38 | 20 | 2E | 10,00 | 400 | 48 | 20 | 2E | 11,40 |
| 192 08M .. MP | 192 | 488,92 | 487,55 | - | - | 100 | 460 | 38 | 20 | 2E | 14,40 | 460 | 48 | 20 | 2E | 16,00 |

.. Belt width in mm = 20 or 30



SOLID BUSH TIMING PULLEYS - «HTD» 8M

PITCH: 8 mm
 MATERIALS :
 Steel C40 UNI 7845
 Cast iron G25 UNI 5007



Steel = from 22 to 72 teeth
 Cast iron = from 80 to 192 teeth

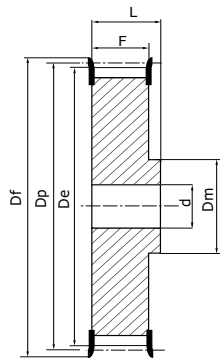
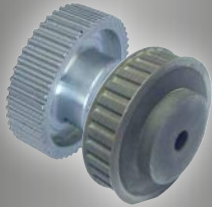
| Reference | Z | Dp | De | Df | Flange N° | Dm | 8M-50 for belt with 50mm width (F=60) | | | | | 8M-85 for belt with 85mm width (F= 95) | | | | |
|---------------|-----|--------|--------|-----|-----------|-----|---|----|----|------|-------|--|-----|----|------|-------|
| | | | | | | | Di | L | d | Type | Kg | Di | L | d | Type | Kg |
| 22 08M .. FMP | 22 | 56,02 | 54,65 | 60 | F23 | 43 | - | 70 | 12 | 2F | 1,00 | - | 105 | 12 | 2F | 1,55 |
| 24 08M .. FMP | 24 | 61,12 | 59,75 | 66 | F26 | 45 | - | 70 | 12 | 2F | 1,23 | - | 105 | 12 | 2F | 1,90 |
| 26 08M .. FMP | 26 | 66,21 | 64,84 | 70 | F27 | 48 | - | 70 | 12 | 2F | 1,50 | - | 105 | 12 | 2F | 2,25 |
| 28 08M .. FMP | 28 | 71,30 | 70,08 | 75 | F28 | 50 | - | 70 | 15 | 2F | 1,67 | - | 105 | 15 | 2F | 2,55 |
| 30 08M .. FMP | 30 | 76,39 | 75,13 | 83 | F30 | 55 | - | 70 | 15 | 2F | 1,97 | - | 105 | 15 | 2F | 3,00 |
| 32 08M .. FMP | 32 | 81,49 | 80,16 | 87 | F31 | 60 | - | 70 | 15 | 2F | 2,27 | - | 105 | 15 | 2F | 3,57 |
| 34 08M .. FMP | 34 | 86,58 | 85,22 | 91 | F32 | 66 | - | 70 | 15 | 2F | 2,69 | - | 105 | 15 | 2F | 4,00 |
| 36 08M .. FMP | 36 | 91,67 | 90,30 | 97 | F34 | 70 | - | 70 | 15 | 2F | 2,97 | - | 105 | 15 | 2F | 4,50 |
| 38 08M .. FMP | 38 | 96,77 | 95,39 | 102 | F35 | 75 | - | 70 | 15 | 2F | 3,23 | - | 105 | 15 | 2F | 5,00 |
| 40 08M .. FMP | 40 | 101,86 | 100,49 | 106 | F37 | 75 | - | 70 | 18 | 2F | 3,50 | - | 105 | 18 | 2F | 5,20 |
| 44 08M .. FMP | 44 | 112,05 | 110,67 | 120 | F39 | 75 | - | 70 | 18 | 2F | 3,90 | - | 105 | 18 | 2F | 6,60 |
| 48 08M .. FMP | 48 | 122,23 | 120,86 | 128 | F40 | 80 | - | 70 | 18 | 2F | 4,30 | - | 105 | 18 | 2F | 7,00 |
| 56 08M .. FMP | 56 | 142,60 | 141,23 | 150 | F43 | 90 | 116 | 60 | 18 | 3EF | 5,00 | - | 95 | 18 | 2F | 10,00 |
| 64 08M .. FMP | 64 | 162,97 | 161,60 | 168 | F45 | 100 | 137 | 60 | 18 | 3EF | 5,60 | 137 | 95 | 20 | 3EF | 10,40 |
| 72 08M .. FMP | 72 | 183,35 | 181,97 | 192 | F48 | 100 | 158 | 60 | 18 | 3EF | 6,80 | 158 | 95 | 20 | 3EF | 11,40 |
| 80 08M .. MP | 80 | 203,72 | 202,35 | - | - | 110 | 180 | 60 | 18 | 3E | 6,90 | 180 | 95 | 20 | 3E | 11,10 |
| 90 08M .. MP | 90 | 229,18 | 227,81 | - | - | 110 | 204 | 60 | 18 | 3E | 8,60 | 204 | 95 | 20 | 3E | 12,20 |
| 112 08M .. MP | 112 | 285,21 | 283,83 | - | - | 110 | 254 | 60 | 18 | 3E | 9,60 | 254 | 95 | 24 | 3E | 15,00 |
| 144 08M .. MP | 144 | 366,69 | 365,32 | - | - | 110 | 336 | 60 | 20 | 3E | 13,80 | 336 | 95 | 24 | 3E | 21,50 |
| 168 08M .. MP | 168 | 427,81 | 426,44 | - | - | 120 | 400 | 60 | 20 | 3E | 16,00 | 400 | 95 | 24 | 3E | 24,10 |
| 192 08M .. MP | 192 | 488,92 | 487,55 | - | - | 130 | 460 | 60 | 20 | 3E | 22,40 | 460 | 95 | 24 | 3E | 30,60 |

. Belt width in mm = 50 or 85

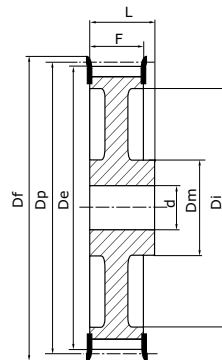


SOLID BUSH TIMING PULLEYS - «HTD» 14M

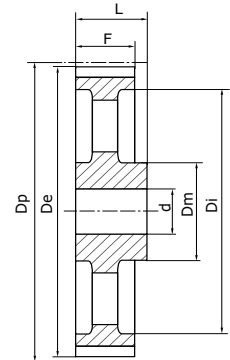
PITCH: 14 mm
MATERIALS :
 Steel C40 UNI 7845
 Cast iron G25 UNI 5007



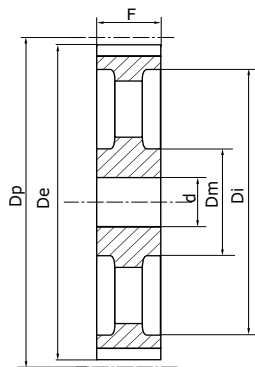
Type 2F
Flanged solid pulley



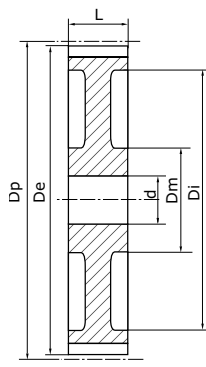
Type 2AF
Light flanged solid pulley



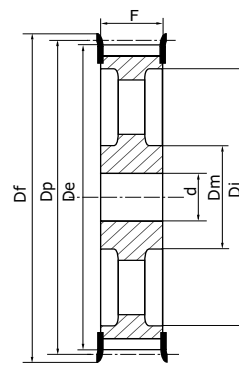
Type 2E
Hollowed pulley not flanged



Type 3E
Hollowed pulley not flanged



Type 3A
Pulley not flanged



Type 3EF
Flanged hollowed pulley

Steel = from 28 to 44 teeth
Cast iron = from 48 to 216 teeth

| Reference | Z | Dp | De | Df | Flange N° | 14M-40 for belt with 40mm width (F=54) | | | | | 14M-55 for belt with 55mm width (F=70) | | | | | 14M-85 for belt with 85mm width (F=102) | | | | | | | |
|---------------|-----|--------|--------|-----|-----------|--|-----|----|----|------|--|-----|-----|----|----|---|-------|-----|-----|-----|----|------|-------|
| | | | | | | Dm | Di | L | d | Type | Kg | Dm | Di | L | d | Type | Kg | Dm | Di | L | d | Type | Kg |
| 28 14M .. FMP | 28 | 124,78 | 122,12 | 128 | F40 | 100 | - | 69 | 24 | 2F | 4,73 | 100 | - | 85 | 24 | 2F | 5,60 | 100 | - | 117 | 24 | 2F | 7,70 |
| 29 14M .. FMP | 29 | 129,23 | 126,57 | 138 | F43 | 100 | - | 69 | 24 | 2F | 5,09 | 100 | - | 85 | 24 | 2F | 6,10 | 100 | - | 117 | 24 | 2F | 8,40 |
| 30 14M .. FMP | 30 | 133,69 | 130,99 | 138 | F43 | 100 | - | 69 | 24 | 2F | 5,45 | 100 | - | 85 | 24 | 2F | 6,60 | 100 | - | 117 | 24 | 2F | 9,10 |
| 32 14M .. FMP | 32 | 142,60 | 139,88 | 154 | F49 | 100 | - | 69 | 24 | 2F | 6,17 | 100 | - | 85 | 24 | 2F | 7,60 | 100 | - | 117 | 24 | 2F | 10,50 |
| 34 14M .. FMP | 34 | 151,52 | 148,79 | 160 | F51 | 100 | - | 69 | 24 | 2F | 6,88 | 100 | - | 85 | 24 | 2F | 8,60 | 100 | - | 117 | 24 | 2F | 11,90 |
| 36 14M .. FMP | 36 | 160,43 | 157,68 | 168 | F52 | 100 | - | 69 | 24 | 2F | 7,60 | 100 | - | 85 | 24 | 2F | 9,60 | 100 | - | 117 | 32 | 2F | 13,20 |
| 38 14M .. FMP | 38 | 169,34 | 166,60 | 184 | F81 | 120 | - | 69 | 24 | 2F | 8,28 | 120 | - | 85 | 24 | 2F | 10,80 | 120 | - | 117 | 32 | 2F | 15,15 |
| 40 14M .. FMP | 40 | 178,25 | 175,49 | 188 | F56 | 120 | - | 69 | 24 | 2F | 9,26 | 120 | - | 85 | 24 | 2F | 11,20 | 135 | - | 117 | 32 | 2F | 17,10 |
| 44 14M .. FMP | 44 | 196,08 | 193,28 | 212 | F61 | 120 | - | 69 | 24 | 2F | 10,32 | 120 | - | 85 | 24 | 2F | 12,50 | 135 | - | 117 | 32 | 2F | 23,30 |
| 48 14M .. FMP | 48 | 213,90 | 211,11 | 226 | F62 | 135 | 170 | 69 | 24 | 2AF | 11,50 | 135 | 170 | 85 | 24 | 2F | 13,70 | 150 | - | 117 | 32 | 2F | 25,00 |
| 56 14M .. FMP | 56 | 249,55 | 246,76 | 256 | F66 | 135 | 207 | 69 | 28 | 2AF | 13,05 | 135 | 207 | 85 | 28 | 3EF | 14,50 | 150 | 207 | 117 | 32 | 3EF | 25,00 |
| 64 14M .. FMP | 64 | 285,21 | 282,41 | 296 | F70 | 135 | 240 | 69 | 28 | 2AF | 14,40 | 135 | 240 | 85 | 28 | 3EF | 15,60 | 150 | 240 | 102 | 32 | 3EF | 30,50 |
| 72 14M .. MP | 72 | 320,86 | 318,06 | - | - | 135 | 278 | 69 | 28 | 2E | 16,90 | 135 | 278 | 85 | 28 | 3E | 16,90 | 150 | 278 | 102 | 32 | 3E | 28,80 |
| 80 14M .. MP | 80 | 356,51 | 353,71 | - | - | 135 | 314 | 69 | 28 | 2E | 18,50 | 135 | 314 | 85 | 28 | 3E | 20,00 | 150 | 314 | 102 | 32 | 3E | 30,10 |
| 90 14M .. MP | 90 | 401,07 | 398,28 | - | - | 135 | 358 | 69 | 28 | 2E | 20,00 | 135 | 358 | 85 | 28 | 3E | 22,60 | 150 | 358 | 102 | 32 | 3E | 33,00 |
| 112 14M .. MP | 112 | 499,11 | 496,32 | - | - | 135 | 456 | 69 | 28 | 2E | 26,70 | 135 | 456 | 85 | 28 | 3E | 29,50 | 150 | 456 | 102 | 32 | 3E | 41,80 |
| 144 14M .. MP | 144 | 641,71 | 638,92 | - | - | 135 | 600 | 69 | 28 | 2E | 35,00 | 135 | 600 | 85 | 28 | 3E | 39,00 | 150 | 600 | 102 | 32 | 3E | 52,40 |
| 168 14M .. MP | 168 | 748,66 | 745,87 | - | - | 135 | 706 | 69 | 28 | 2E | 44,20 | 135 | 706 | 85 | 28 | 3E | 48,50 | 150 | 706 | 102 | 32 | 3E | 60,30 |
| 192 14M .. MP | 192 | 855,62 | 852,82 | - | - | 135 | 813 | 69 | 28 | 2E | 52,20 | 135 | 813 | 85 | 28 | 3E | 57,80 | 165 | 813 | 102 | 32 | 3E | 70,20 |
| 216 14M .. MP | 216 | 962,57 | 959,76 | - | - | 150 | 920 | 69 | 28 | 2E | 62,50 | 150 | 920 | 85 | 28 | 3E | 67,00 | 160 | 920 | 102 | 32 | 3E | 81,00 |

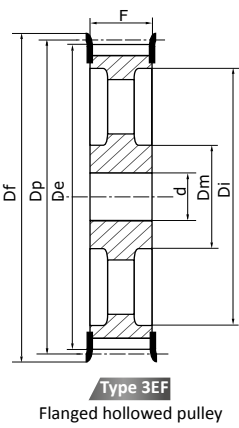
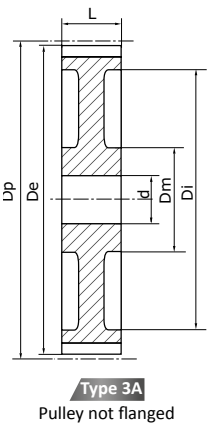
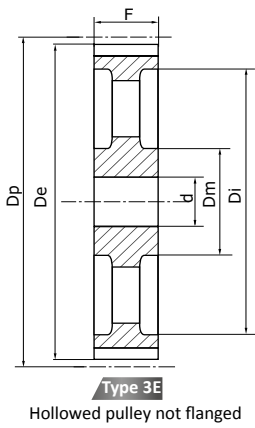
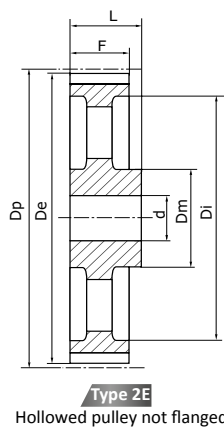
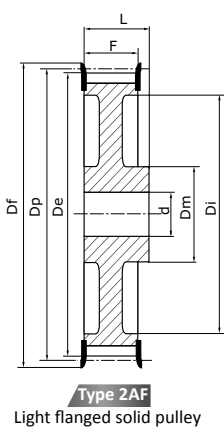
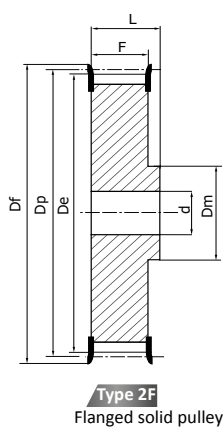
. Belt width in mm = 40, 55 or 85



Dimensions in mm

SOLID BUSH TIMING PULLEYS - «HTD» 14M

PITCH: 14 mm
MATERIALS :
 Steel C40 UNI 7845
 Cast iron G25 UNI 5007



Steel = from 28 to 64 teeth
 Cast iron = from 72 to 216 teeth

| Reference | Z | Dp | De | Df | Flange N° | 14M-115 for belt with 115mm width (F=133) | | | | | 14M-170 for belt with 170mm width (F=187) | | | | | | |
|---------------|-----|--------|--------|-----|-----------|---|-----|-----|----|------|---|-----|-----|-----|----|------|--------|
| | | | | | | Dm | Di | L | d | Type | Kg | Dm | Di | L | d | Type | Kg |
| 28 14M .. FMP | 28 | 124,78 | 122,12 | 128 | F40 | 100 | - | 148 | 32 | 2F | 9,20 | 100 | - | 202 | 32 | 2F | 13,80 |
| 29 14M .. FMP | 29 | 129,23 | 126,57 | 138 | F43 | 100 | - | 148 | 32 | 2F | 10,20 | 100 | - | 202 | 32 | 2F | 14,20 |
| 30 14M .. FMP | 30 | 133,69 | 130,99 | 138 | F43 | 100 | - | 148 | 32 | 2F | 11,20 | 100 | - | 202 | 32 | 2F | 15,60 |
| 32 14M .. FMP | 32 | 142,60 | 139,88 | 154 | F49 | 100 | - | 148 | 32 | 2F | 13,20 | 100 | - | 202 | 32 | 2F | 18,10 |
| 34 14M .. FMP | 34 | 151,52 | 148,79 | 160 | F51 | 100 | - | 148 | 32 | 2F | 14,80 | 100 | - | 202 | 32 | 2F | 20,40 |
| 36 14M .. FMP | 36 | 160,43 | 157,68 | 168 | F52 | 100 | - | 148 | 32 | 2F | 16,60 | 120 | - | 202 | 32 | 2F | 23,50 |
| 38 14M .. FMP | 38 | 169,34 | 166,60 | 184 | F81 | 120 | - | 148 | 32 | 2F | 19,20 | 135 | - | 202 | 32 | 2F | 26,50 |
| 40 14M .. FMP | 40 | 178,25 | 175,49 | 188 | F56 | 135 | - | 148 | 32 | 2F | 20,56 | 135 | - | 202 | 32 | 2F | 30,10 |
| 44 14M .. FMP | 44 | 196,08 | 193,28 | 212 | F61 | 135 | - | 148 | 32 | 2F | 21,93 | 140 | - | 202 | 32 | 2F | 37,80 |
| 48 14M .. FMP | 48 | 213,90 | 211,11 | 226 | F62 | 150 | - | 148 | 32 | 2F | 25,00 | 150 | - | 202 | 32 | 2F | 44,50 |
| 56 14M .. FMP | 56 | 249,55 | 246,76 | 256 | F66 | 150 | - | 148 | 32 | 2F | 27,50 | 150 | - | 202 | 32 | 2F | 61,00 |
| 64 14M .. FMP | 64 | 285,21 | 282,41 | 296 | F70 | 150 | 240 | 133 | 32 | 3EF | 30,10 | 150 | 240 | 202 | 32 | 2F | 81,00 |
| 72 14M .. MP | 72 | 320,86 | 318,06 | - | - | 150 | 278 | 133 | 32 | 3E | 32,83 | 150 | 278 | 187 | 32 | 3A | 61,40 |
| 80 14M .. MP | 80 | 356,51 | 353,71 | - | - | 150 | 314 | 133 | 32 | 3E | 35,55 | 150 | 314 | 187 | 32 | 3A | 65,00 |
| 90 14M .. MP | 90 | 401,07 | 398,28 | - | - | 150 | 358 | 133 | 32 | 3E | 41,00 | 150 | 358 | 187 | 32 | 3E | 68,00 |
| 112 14M .. MP | 112 | 499,11 | 496,32 | - | - | 150 | 456 | 133 | 32 | 3E | 54,40 | 150 | 456 | 187 | 32 | 3E | 87,50 |
| 144 14M .. MP | 144 | 641,71 | 638,92 | - | - | 150 | 600 | 133 | 32 | 3E | 67,80 | 165 | 600 | 187 | 32 | 3E | 114,00 |
| 168 14M .. MP | 168 | 748,66 | 745,87 | - | - | 150 | 706 | 133 | 32 | 3E | 75,80 | 165 | 706 | 187 | 32 | 3E | 125,00 |
| 192 14M .. MP | 192 | 855,62 | 852,82 | - | - | 165 | 813 | 133 | 32 | 3E | 88,30 | 165 | 813 | 187 | 32 | 3E | 136,40 |
| 216 14M .. MP | 216 | 962,57 | 959,76 | - | - | 160 | 920 | 133 | 32 | 3E | 98,00 | 165 | 920 | 187 | 32 | 3E | 147,00 |

.. Belt width in mm = 115 and 170