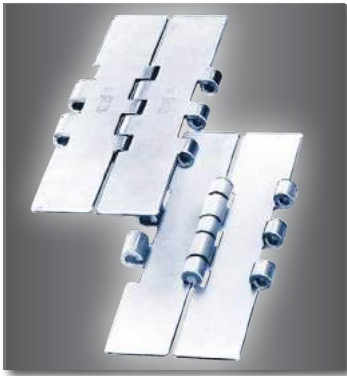
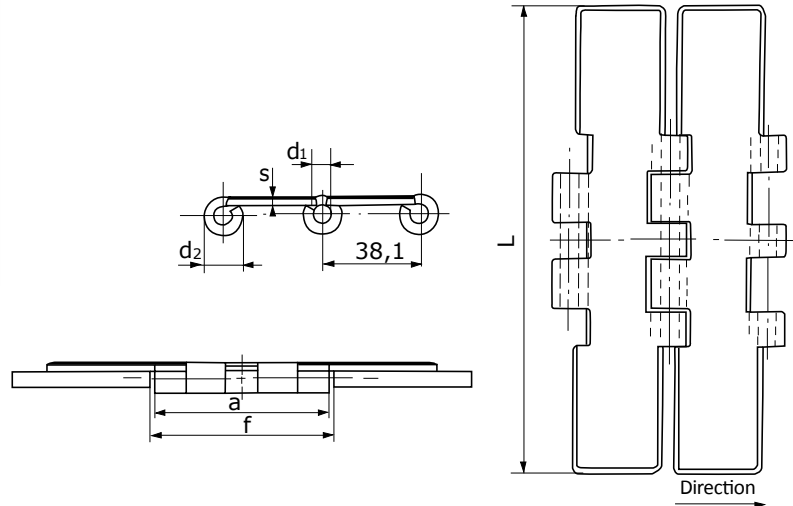




DOUBLE STRAIGHT HINGES

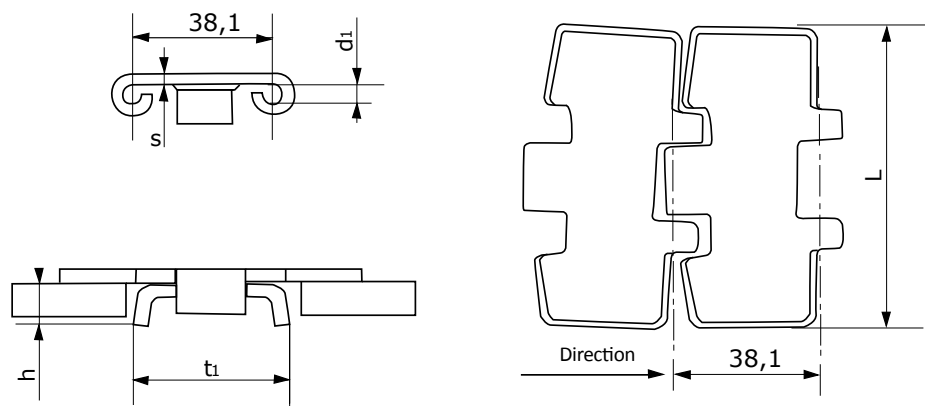


Our chains are made based on the French standard E26-108 and German standard DIN 8153. They are supplied in treated steel (reference AD) or in stainless steel (reference 18).



References	Pin diameter <i>d1</i>	Pin length <i>a</i>	Width <i>L</i>	Thickness <i>s</i>	Loop outer diameter <i>d2</i>	Gap with lateral guides to anticipate <i>f</i>	Mass per meter <i>kg/m</i>
CCRP1270	6,35	80,5	127	3	13	82,5	5
CCRP1524	6,35	80,5	152,4	3	13	82,5	5,3
CCRP1905	6,35	80,5	190,5	3	13	82,5	5,8

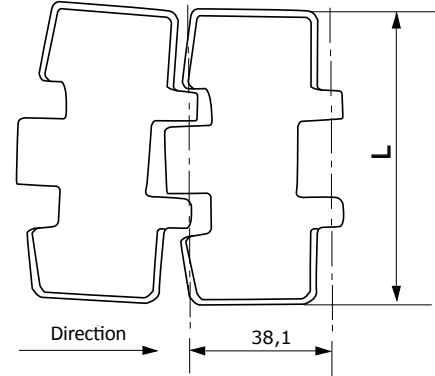
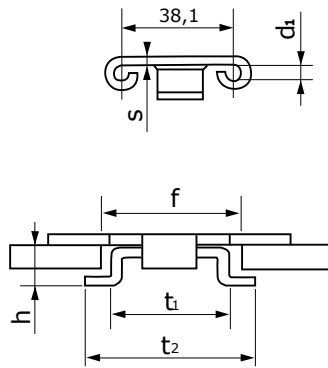
SIDE BOW HINGES - with E Type guide tabs



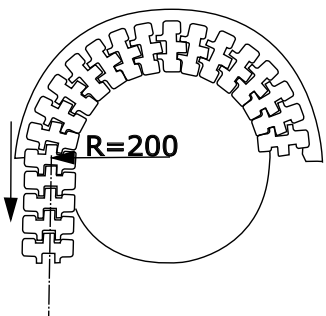
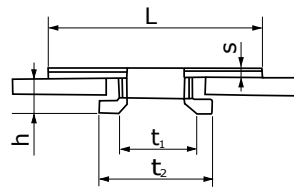
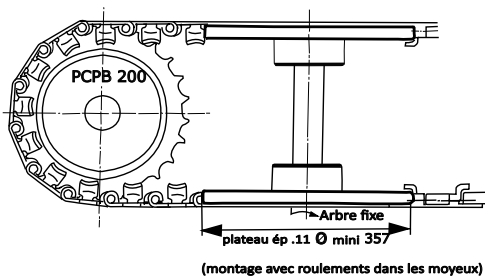
References	Pin diameter <i>d1</i>	Pin length <i>L</i>	Width <i>s</i>	Thickness <i>t1</i>	Loop outer diameter <i>h</i>	Gap with lateral guides to anticipate <i>mm</i>	Mass per meter <i>kg/m</i>
CCBE0826	6,35	82,6	3	43	11,2	457	2,9
CCBE1143	6,35	114,3	3	43	11,2	500	3,6
CCBE1905	6,35	190,5	3	43	11,2	500	5,3


SIDE BOW HINGES - with T Type guide tabs


Our chains are made based on the French standard E26-108 and German standard DIN 8153. They are supplied in treated steel (reference AD) or in stainless steel (reference 18).



References	Pin diameter <i>d1</i>	Width <i>L</i>	Thickness <i>s</i>	Width on guide tabs <i>t1</i>	Outer width on guide tabs <i>t2</i>	hinge bracket height <i>h</i>	min side bow <i>mm</i>	Mass per meter <i>kg/m</i>
CCBT0826	6,35	82,6	3	43	56,2	16,3	457	3,1
CCBT1143	6,35	114,3	3	43	56,2	16,3	500	3,8
CCBT1905	6,35	190,5	3	43	56,2	16,3	500	5,5

200mm SIDE BOW HINGES - with T Type guide tabs


References	Pin diameter <i>d1</i>	Width <i>L</i>	Thickness <i>s</i>	Width on guide tabs <i>t1</i>	Outer width on guide tabs <i>t2</i>	hinge bracket height <i>h</i>	min side bow <i>mm</i>	Mass per meter <i>kg/m</i>
CCCT0826	6,35	82,6	3	43	56,2	16,3	200	3