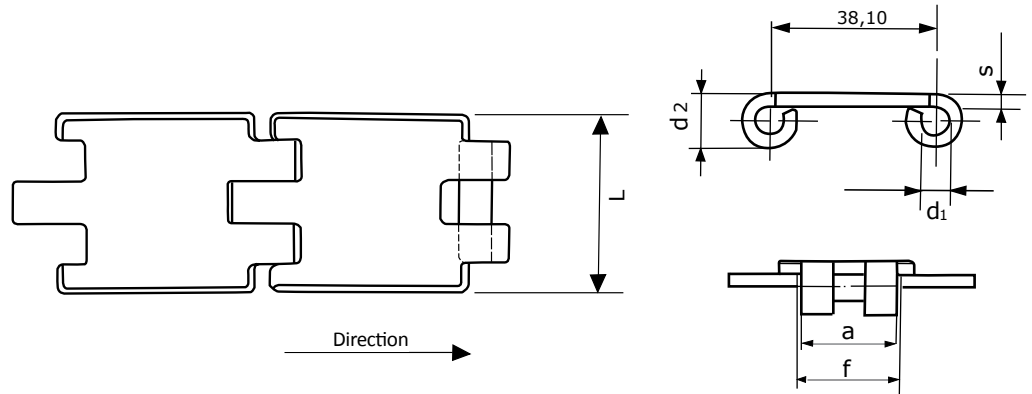




STRAIGHT NARROW HINGES

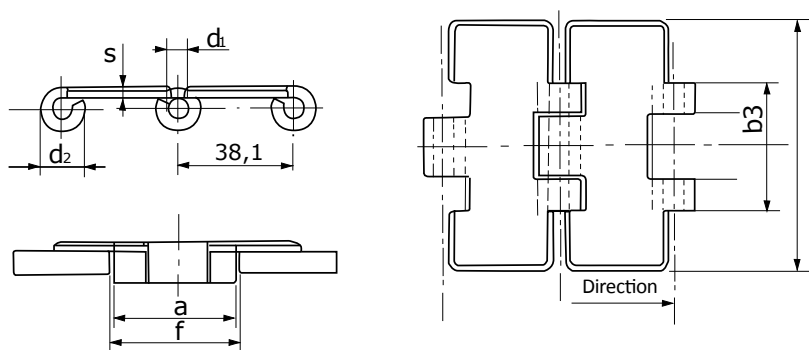


Our chains are made based on the French standard E26-108 and German standard DIN 8153. They are supplied in treated steel (reference AD) or in stainless steel (reference 18).



References	Pin diameter d_1	Pin length a	Width L	Thickness s	Loop outer diameter d_2	Gap with lateral guides to anticipate f	Mass per meter kg/m
CCNP0320	6,35	21,75	32	3	13	23,75	1,1
CCNP0450	6,35	21,75	45	3	13	23,75	1,3

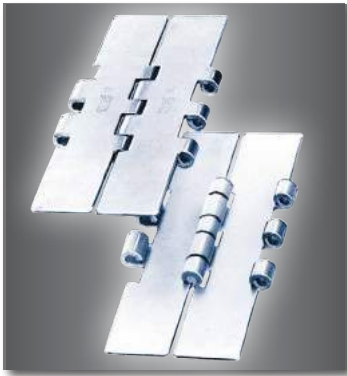
STANDARD STRAIGHT HINGES



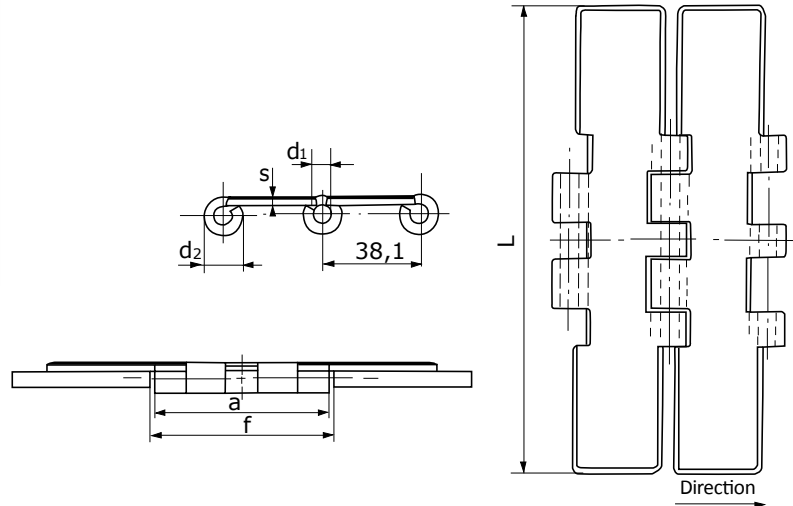
References	Pin diameter d_1	Pin length a	Width L	Thickness s	Loop outer diameter d_2	Gap with lateral guides to anticipate f	Mass per meter kg/m
CCNP0635	6,35	42,5	63,5	3	13	44,5	2,25
CCNP0762	6,35	42,5	76,2	3	13	44,5	2,5
CCNP0826	6,35	42,5	82,6	3	13	44,5	2,65
CCNP0889	6,35	42,5	88,9	3	13	44,5	2,75
CCNP0952	6,35	42,5	95,2	3	13	44,5	2,75
CCNP1016	6,35	42,5	101,6	3	13	44,5	3
CCNP1143	6,35	42,5	114,3	3	13	44,5	3,3
CCNP1270	6,35	42,5	127	3	13	44,5	3,5
CCNP1524	6,35	42,5	152,4	3	13	44,5	4,2
CCNP1905	6,35	42,5	190,5	3	13	44,5	5,1



DOUBLE STRAIGHT HINGES

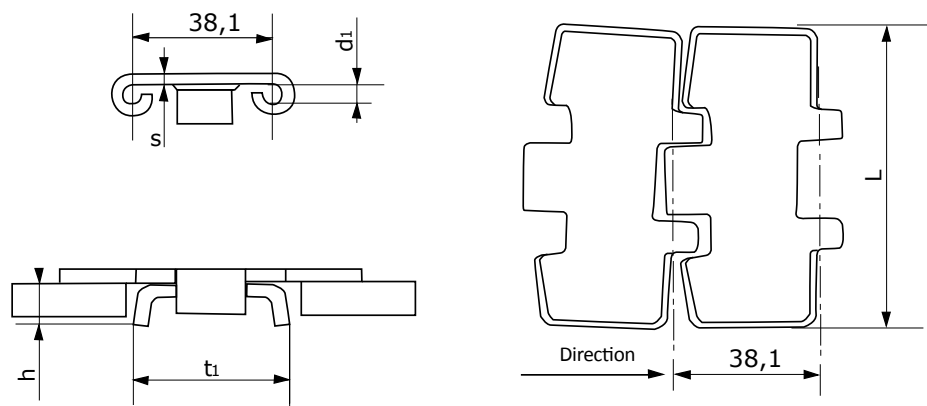


Our chains are made based on the French standard E26-108 and German standard DIN 8153. They are supplied in treated steel (reference AD) or in stainless steel (reference 18).



References	Pin diameter <i>d1</i>	Pin length <i>a</i>	Width <i>L</i>	Thickness <i>s</i>	Loop outer diameter <i>d2</i>	Gap with lateral guides to anticipate <i>f</i>	Mass per meter <i>kg/m</i>
CCRP1270	6,35	80,5	127	3	13	82,5	5
CCRP1524	6,35	80,5	152,4	3	13	82,5	5,3
CCRP1905	6,35	80,5	190,5	3	13	82,5	5,8

SIDE BOW HINGES - with E Type guide tabs



References	Pin diameter <i>d1</i>	Pin length <i>L</i>	Width <i>s</i>	Thickness <i>t1</i>	Loop outer diameter <i>h</i>	Gap with lateral guides to anticipate <i>mm</i>	Mass per meter <i>kg/m</i>
CCBE0826	6,35	82,6	3	43	11,2	457	2,9
CCBE1143	6,35	114,3	3	43	11,2	500	3,6
CCBE1905	6,35	190,5	3	43	11,2	500	5,3