



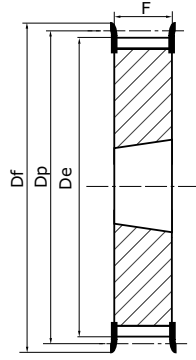
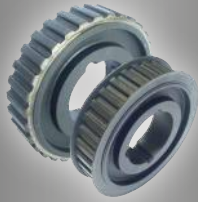
TAPER LOCK TIMING PULLEYS - L050 - L075 - L100

PITCH: 3/8" (9,525 mm)

MATERIALS :

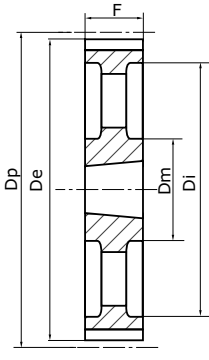
Steel C40 UNI 7845

Cast iron G25 UNI 5007



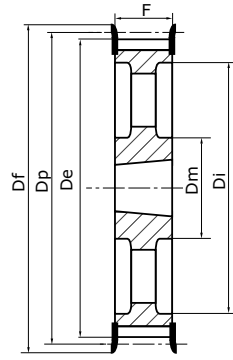
Type 4F

Flanged solid pulley



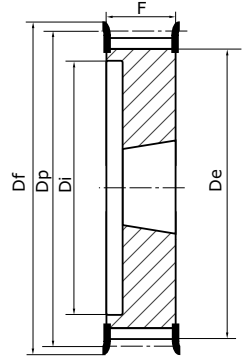
Type 4E

Hollowed pulley not flanged



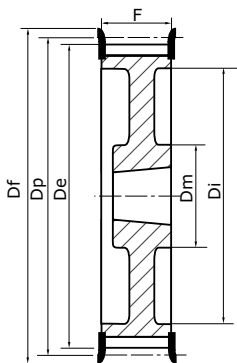
Type 4EF

Flanged hollowed pulley



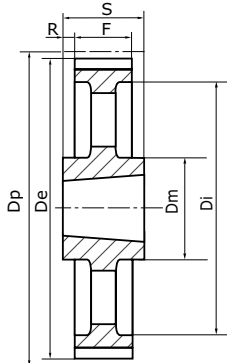
Type 6F

Flanged solid pulley



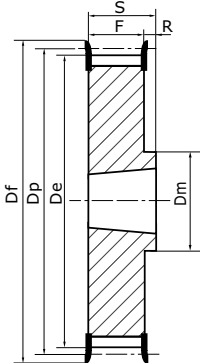
Type 6AF

Light flanged solid pulley



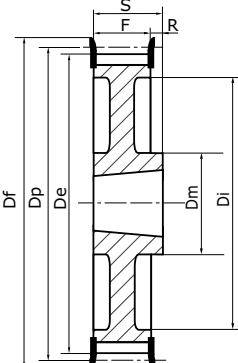
Type 7E

Hollowed pulley not flanged



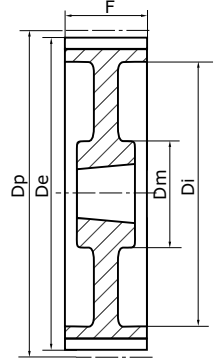
Type 8F

Flanged solid pulley



Type 8AF

Light flanged solid pulley



Type 9A

Light pulley not flanged

Steel = from 18 to 60 teeth

Cast iron = from 72 to 120 teeth

Reference	Z	Flange N°	Dp	De	Df	L050 for belt with 12.7mm width						L075 for belt with 19.05mm width						L100 for belt with 25.4mm width											
						Dm	Di	F	S	R	Bush	Type	Kg	Dm	Di	F	S	R	Bush	Type	Kg	Dm	Di	F	S	R	Bush	Type	Kg
18 L .. FMA	18	F22	54,57	53,81	60	45	-	19	22	3	1108	8F	0,20	-	-	25	22	-	1108	4F	0,20	-	38	31	22	9	1108	6F	0,20
19 L .. FMA	19	F24	57,61	56,84	64	45	-	19	22	3	1108	8F	0,20	-	-	25	22	-	1108	4F	0,30	-	38	31	22	9	1108	6F	0,30
20 L .. FMA	20	F25	60,64	59,88	66	48	-	19	22	3	1108	8F	0,20	-	-	25	22	-	1108	4F	0,30	-	45	31	22	9	1108	6F	0,40
21 L .. FMA	21	F26	63,67	62,91	70	48	-	19	22	3	1108	8F	0,30	-	-	25	22	-	1108	4F	0,40	-	45	31	22	9	1108	6F	0,40
22 L .. FMA	22	F27	66,70	65,94	75	51	-	19	22	3	1108	8F	0,30	-	-	25	22	-	1108	4F	0,40	-	48	31	22	9	1108	6F	0,40
23 L .. FMA	23	F28	69,73	68,97	79	54	-	19	22	3	1108	8F	0,40	-	-	25	22	-	1108	4F	0,40	-	52	32	22	10	1108	6F	0,50
24 L .. FMA	24	F28	72,77	72,00	79	54	-	19	22	3	1108	8F	0,40	-	-	25	22	-	1108	4F	0,50	-	52	32	22	10	1108	6F	0,60
25 L .. FMA	25	F29	75,80	75,04	83	56	-	19	22	3	1108	8F	0,50	-	-	25	22	-	1108	4F	0,60	-	54	32	22	10	1108	6F	0,60
26 L .. FMA	26	F30	78,83	78,07	87	60	-	19	22	3	1108	8F	0,50	-	-	25	22	-	1108	4F	0,60	-	60	32	22	10	1108	6F	0,70
27 L .. FMA	27	F30	81,86	81,10	87	62	-	19	22	3	1108	8F	0,60	-	-	25	22	-	1108	4F	0,70	-	60	32	22	10	1108	6F	0,80
28 L .. FMA	28	F31	84,89	84,13	91	65	-	19	22	3	1108	8F	0,60	-	-	25	22	-	1108	4F	0,70	-	65	32	22	10	1108	6F	0,80
30 L .. FMA	30	F33	90,96	90,20	97	70	-	19	22	3	1108	8F	0,80	-	-	25	22	-	1108	4F	0,90	-	71	32	25	10	1210	6F	0,90
32 L .. FMA	32	F34	97,02	96,26	102	74	-	19	22	3	1108	8F	0,90	-	-	25	22	-	1108	4F	1,00	-	75	32	25	7	1210	6F	1,00
36 L .. FMA	36	F37	109,15	108,39	115	85	-	19	22	3	1108	8F	1,20	-	-	25	22	-	1610	4F	1,20	-	86	32	25	7	1610	6F	1,40
40 L .. FMA	40	F40	121,28	120,51	128	88	-	19	25	3	1610	8F	1,50	-	-	25	22	-	1610	4F	1,70	-	96	32	25	7	1610	6F	1,70
44 L .. FMA	44	F48	145,53	144,77	150	88	120	19	25	6	1610	8AF	2,30	92	120	25	25	-	1610	4EF	2,50	92	120	32	25	7	1610	6AF	2,70
48 L .. FMA	48	F45	133,40	132,64	-	88	110	19	25	6	1610	8F	1,80	90	110	25	25	-	1610	4EF	2,50	90	110	32	25	-	1610	6AF	2,30
60 L .. MA	60	-	181,91	181,15	-	92	166	19	25	6	1610	7E	2,00	92	166	25	25	-	1610	4EF	3,00	92	166	32	25	3,5	1610	9A	2,40
72 L .. MA	72	-	218,30	217,53	-	92	202	19	25	6	1610	7E	3,00	92	202	25	25	-	1610	4E	4,00	92	202	32	32	-	2012	4E	4,40
84 L .. MA	84	-	254,68	253,90	-	92	236	19	25	13	1610	7E	4,00	92	236	25	32	3,5	2012	7E	5,20	92	236	32	32	-	2012	4E	6,00
96 L .. MA	96	-	291,06	290,30	-	106	270	19	32	13	2012	7E	5,50	106	270	25	32	3,5	2012	7E	6,50	106	270	32	32	-	2012	4E	7,10
120 L .. MA	120	-	363,83	363,07	-	106	343	19	32	13	2012	7E	6,80	106	343	25	32	3,5	2012	7E	7,60	106	343	32	32	-	2012	4E	8,50

.. Belt width in 1/100 inch = 050, 075 or 100.



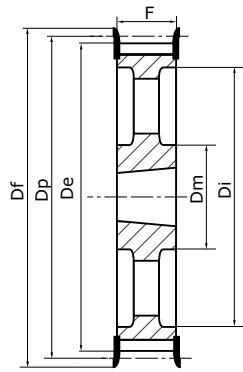
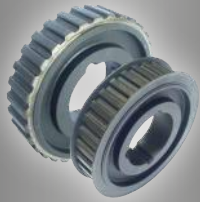
TAPER LOCK TIMING PULLEYS - H100 - H150

PITCH: 1/2" (12,7 mm)

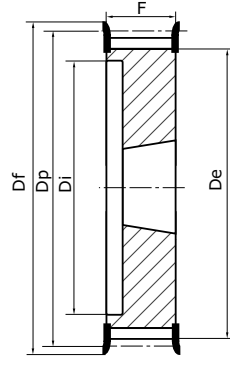
MATERIALS :

Steel C40 UNI 7845

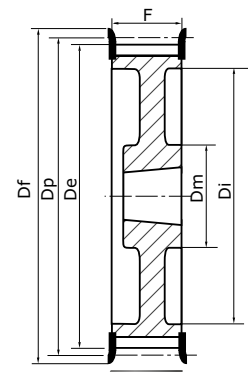
Cast iron G25 UNI 5007



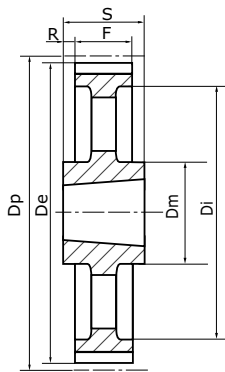
Type 4EF
Flanged hollowed pulley



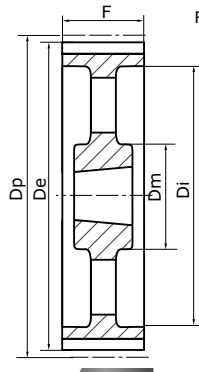
Type 6F
Flanged solid pulley



Type 6AF
Light flanged solid pulley



Type 7E
Hollowed pulley not flanged



Type 9E
Hollowed pulley not flanged

Steel = from 16 to 48 teeth
Cast iron = from 60 to 120 teeth

H100										
for belt with 25.4mm width										
Di	F	S	R	Bush	Type	Kg				

H150										
for belt with 38.1mm width										
Di	F	S	R	Bush	Type	Kg				

Reference	Z	Flange N°	Dp	De	Df	Dm	Di	F	S	R	Bush	Type	Kg	Di	F	S	R	Bush	Type	Kg
16 H .. FMA	16	F26	64,68	63,31	70	-	45	31	22	9	1108	6F	0,40	-	-	-	-	-	-	-
18 H .. FMA	18	F28	72,77	71,39	79	-	52	31	25	6	1210	6F	0,50	52	45	25	20	1210	6F	0,60
19 H .. FMA	19	F29	76,81	75,44	83	-	56	31	25	6	1210	6F	0,60	56	45	25	20	1210	6F	0,70
20 H .. FMA	20	F30	80,85	79,48	87	-	60	31	25	6	1210	6F	0,70	60	45	25	20	1210	6F	0,80
21 H .. FMA	21	F31	84,89	83,52	91	-	64	32	25	7	1210	6F	0,80	64	45	25	20	1210	6F	1,00
22 H .. FMA	22	F32	88,94	87,56	93	-	67	32	25	7	1210	6F	0,90	67	45	25	20	1210	6F	1,20
23 H .. FMA	23	F33	92,98	91,61	97	-	70	32	25	7	1610	6F	0,90	70	45	25	20	1610	6F	1,30
24 H .. FMA	24	F34	97,02	95,65	102	-	74	32	25	7	1610	6F	1,00	74	45	25	20	1610	6F	1,00
25 H .. FMA	25	F35	101,06	99,69	106	-	77	32	25	7	1610	6F	1,00	77	45	25	20	1610	6F	1,20
26 H .. FMA	26	F36	105,11	103,73	112	-	82	32	25	7	1610	6F	1,20	82	45	25	20	1610	6F	1,40
27 H .. FMA	27	F37	109,15	107,78	115	-	85	32	25	7	1610	6F	1,30	85	45	25	20	1610	6F	1,60
28 H .. FMA	28	F38	113,19	111,82	120	-	90	32	25	7	1610	6F	1,50	90	45	25	20	1610	6F	1,80
30 H .. FMA	30	F40	121,28	119,90	128	-	98	32	25	7	1610	6F	1,70	98	45	25	20	1610	6F	2,30
32 H .. FMA	32	F42	129,36	127,99	135	80	106	32	25	7	1610	6AF	2,00	106	45	25	20	1610	6AF	2,30
36 H .. FMA	36	F48	145,53	144,16	150	92	121	32	25	7	1610	6AF	2,70	121	45	25	20	1610	6AF	3,10
40 H .. FMA	40	F52	161,70	160,33	168	92	138	32	25	7	1610	6AF	3,60	138	45	25	20	1610	6AF	4,00
44 H .. FMA	44	F55	177,87	176,50	184	106	152	32	32	-	2012	4EF	3,80	152	45	32	13	2012	6AF	4,40
48 H .. FMA	48	F59	194,04	192,67	200	106	169	32	32	-	2012	4EF	3,20	169	45	32	13	2012	6AF	4,80
60 H .. MA	60	-	242,55	241,18	-	92	223	34	32	1	2012	9E	4,80	223	46	32	7,5	2012	9E	5,40
72 H .. MA	72	-	291,06	289,69	-	92	270	34	32	1	2012	9E	5,70	270	46	32	7,5	2012	9E	6,50
84 H .. MA	84	-	339,57	338,20	-	92	318	34	32	1	2012	9E	6,80	318	46	32	7,5	2012	9E	8,40
96 H .. MA	96	-	388,08	386,71	-	106	366	34	45	5,5	2517	7E	8,20	366	46	45	0,5	2517	9E	11,00
120 H .. MA	120	-	485,10	483,73	-	106	462	34	45	5,5	2517	7E	12,10	462	46	45	0,5	2517	9E	14,80

.. Belt width in 1/100 inch = 100 or 150.



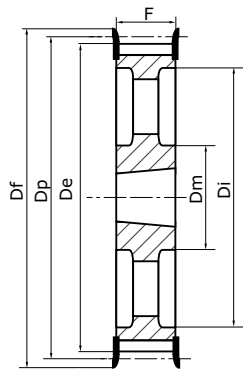
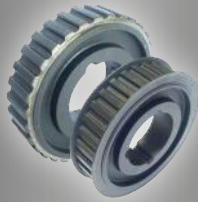
TAPER LOCK TIMING PULLEYS - H200 - H300

PITCH: 1/2" (12,7 mm)

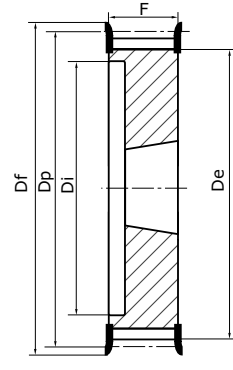
MATERIALS :

Steel C40 UNI 7845

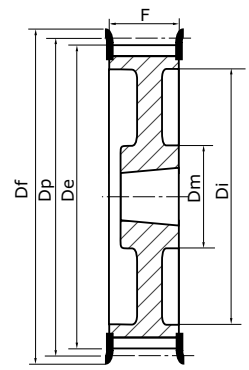
Cast iron G25 UNI 5007



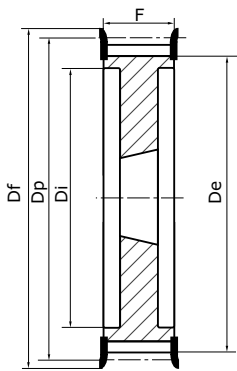
Type 4EF
Flanged hollowed pulley



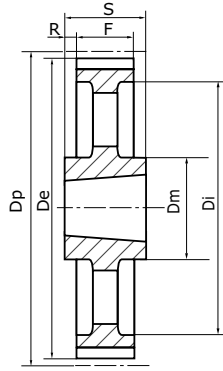
Type 6F
Flanged solid pulley



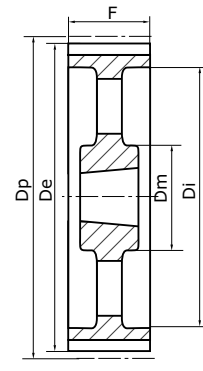
Type 6AF
Light flanged solid pulley



Type 5F
Flanged solid pulley



Type 7E
Hollowed pulley not flanged



Type 9E
Hollowed pulley not flanged

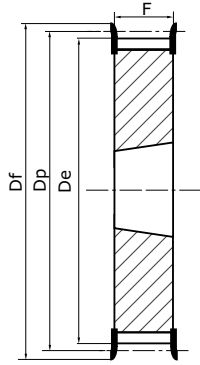
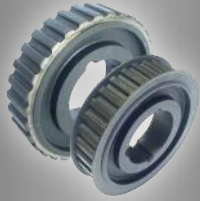
Steel = from 18 to 48 teeth
Cast iron = from 60 to 120 teeth

Reference	Z	Flasque	Dp	De	Df	H200 for belt with 50.8mm width							H300 for belt with 76.2mm width														
						Dm	Di	F	S	R	Bush	Type	Kg	Dm	Di	F	S	R	Bush	Type	Kg						
18 H .. FMA	18	F28	72,77	71,39	79	-	52	58	25	33	1210	6F	0,80	-	-	-	-	-	-	-	-	-	-	-	-	-	-
19 H .. FMA	19	F29	76,81	75,44	83	-	56	58	25	33	1210	6F	0,90	-	-	-	-	-	-	-	-	-	-	-	-	-	-
20 H .. FMA	20	F30	80,85	79,48	87	-	60	58	25	33	1610	6F	1,00	-	65	84	38	23	1615	5F	1,50	-	-	-	-	-	-
21 H .. FMA	21	F31	84,89	83,52	91	-	64	58	25	33	1610	6F	1,70	-	65	84	38	23	1615	5F	1,20	-	-	-	-	-	-
22 H .. FMA	22	F32	88,94	87,56	93	-	67	58	25	33	1610	6F	1,50	-	67	84	38	23	1615	5F	1,60	-	-	-	-	-	-
23 H .. FMA	23	F33	92,98	91,61	97	-	70	58	25	33	1610	6F	1,80	-	70	84	38	23	1615	5F	1,80	-	-	-	-	-	-
24 H .. FMA	24	F34	97,02	95,65	102	-	74	58	25	33	1610	6F	1,50	-	74	84	38	23	1615	5F	2,00	-	-	-	-	-	-
25 H .. FMA	25	F35	101,06	99,69	106	-	77	58	25	33	1610	6F	1,50	-	77	84	38	23	1615	5F	2,00	-	-	-	-	-	-
26 H .. FMA	26	F36	105,11	103,73	112	-	82	58	25	33	1610	6F	1,80	-	82	84	38	23	1615	5F	2,70	-	-	-	-	-	-
27 H .. FMA	27	F37	109,15	107,78	115	-	85	58	25	33	1610	6F	1,90	-	85	84	32	26	2012	5F	3,00	-	-	-	-	-	-
28 H .. FMA	28	F38	113,19	111,82	120	-	90	58	25	33	1610	6F	1,90	-	90	84	32	26	2012	5F	2,40	-	-	-	-	-	-
30 H .. FMA	30	F40	121,28	119,90	128	-	98	58	25	33	1610	6F	2,30	-	98	84	32	26	2012	5F	2,90	-	-	-	-	-	-
32 H .. FMA	32	F42	129,36	127,99	135	-	106	58	32	26	2012	6F	3,00	-	106	84	45	19,05	2517	5F	3,30	-	-	-	-	-	-
36 H .. FMA	36	F48	145,53	144,16	150	102	121	58	32	26	2012	6AF	3,00	-	121	84	45	19,05	2517	5AF	4,50	-	-	-	-	-	-
40 H .. FMA	40	F52	161,70	160,33	168	106	140	58	32	26	2012	6AF	3,60	-	138	84	45	19,05	2517	5AF	6,00	-	-	-	-	-	-
44 H .. FMA	44	F55	177,87	176,50	184	106	150	58	32	26	2012	6AF	4,00	119	150	86	45	20,5	2517	5AF	6,60	-	-	-	-	-	-
48 H .. FMA	48	F59	194,04	192,67	200	119	168	58	45	13	2517	6AF	4,60	119	168	86	45	20,5	2517	5AF	7,60	-	-	-	-	-	-
60 H .. MA	60	-	242,55	241,18	-	119	223	60	45	7,5	2517	9E	7,00	119	223	86	45	20,5	2517	9E	8,40	-	-	-	-	-	-
72 H .. MA	72	-	291,06	289,69	-	119	270	60	45	7,5	2517	9E	8,00	119	270	86	45	20,5	2517	9E	10,40	-	-	-	-	-	-
84 H .. MA	84	-	339,57	338,20	-	119	318	60	45	7,5	2517	9E	9,00	119	318	86	45	20,5	2517	9E	12,50	-	-	-	-	-	-
96 H .. MA	96	-	388,08	386,71	-	119	366	60	45	7,5	2517	9E	10,00	150	366	86	76	5	3030	9E	14,20	-	-	-	-	-	-
120 H .. MA	120	-	485,10	483,73	-	119	462	60	45	7,5	2517	9E	13,40	150	462	86	76	5	3030	9E	18,80	-	-	-	-	-	-

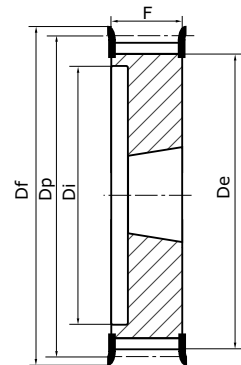
.. Belt width in 1/100 inch = 200 or 300.


TAPER LOCK TIMING PULLEYS - «HTD» 5M

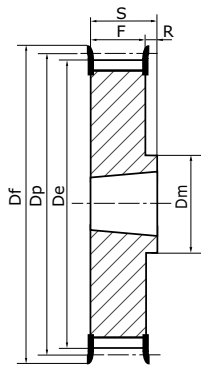
PITCH: 5 mm
MATERIAL :
Steel C40 UNI 7845



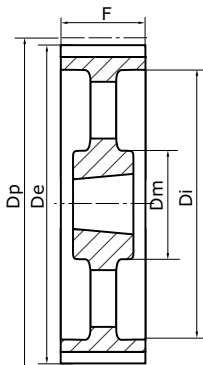
Type 4F
Flanged solid pulley



Type 6F
Flanged solid pulley



Type 8F
Flanged solid pulley



Type 9E
Hollowed pulley not flanged

5M-15

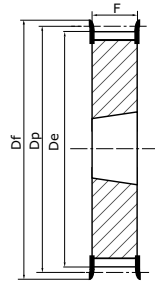
for belt with 15mm width

Reference	Z	Flange N°	Dp	De	Df	Dm	Di	F	S	R	Bush	Type	Kg
34 5M 15 FMA	34	F21	54,11	52,97	57	-	-	22	22	-	1008	4F	0,40
36 5M 15 FMA	36	F22	57,30	56,15	60	-	-	22	22	-	1108	4F	0,43
38 5M 15 FMA	38	F25	60,48	59,34	66	-	-	22	22	-	1108	4F	0,45
40 5M 15 FMA	40	F26	63,66	62,52	70	-	-	22	22	-	1108	4F	0,52
44 5M 15 FMA	44	F27	70,03	68,89	75	-	-	22	22	-	1108	4F	0,62
48 5M 15 FMA	48	F29	76,39	75,25	93	59	-	22	25	3	1210	8F	0,19
56 5M 15 FMA	56	F32	89,13	87,39	94	70	-	22	25	3	1210	8F	0,22
64 5M 15 FMA	64	F25	101,86	100,72	106	80	-	22	25	3	1210	8F	0,25
72 5M 15 MA	72	-	114,59	113,45	-	92	-	22	25	3	1610	6F	0,30
80 5M 15 MA	80	-	127,32	126,18	-	92	-	22	25	3	1610	6F	0,33
90 5M 15 MA	90	-	143,24	142,10	-	92	-	22	25	3	1610	6F	0,37
112 5M 15 MA	112	-	178,25	177,11	-	110	-	20	32	12	2012	6F	0,46
136 5M 15 MA	136	-	216,45	215,31	-	110	199	20	32	6	2012	9E	0,56

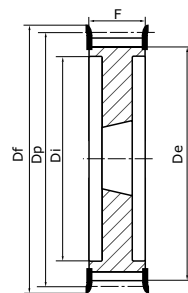


TAPER LOCK TIMING PULLEYS - «HTD» 8M

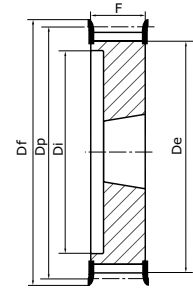
PITCH: 8 mm
 MATERIALS :
 Steel C40 UNI 7845
 Cast iron G25 UNI 5007



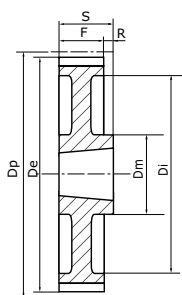
Type 4F
 Flanged solid pulley



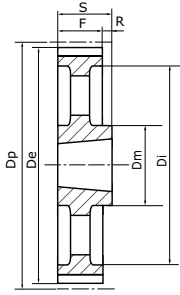
Type 5F
 Flanged solid pulley



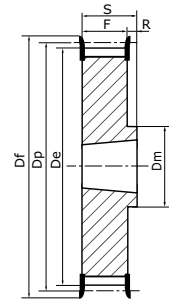
Type 6F
 Flanged solid pulley



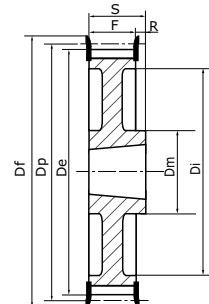
Type 8A
 Light pulley not flanged



Type 8E
 Hollowed pulley not flanged



Type 8F
 Flanged solid pulley



Type 8AF
 Light flanged solid pulley

Steel = from 22 to 72 teeth
 Cast iron = from 80 to 144 teeth

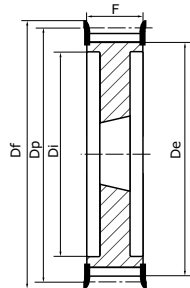
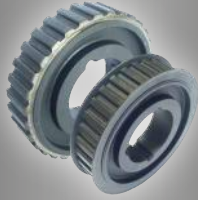
Reference	Z	Flange N°	Dp	De	Df	8M-20 for belt with 20mm width						8M-30 for belt with 30mm width									
						Dm	Di	F	S	R	Bush	Type	Kg	Dm	Di	F	S	R	Bush	Type	Kg
22 8M .. FMA	22	F22	56,02	54,65	60	-	37	28	22	6	1108	6F	0,25	-	37	38	22	16	1108	6F	0,31
24 8M .. FMA	24	F25	61,12	59,75	66	-	44	28	22	6	1108	6F	0,30	-	44	38	22	16	1108	6F	0,38
26 8M .. FMA	26	F26	66,21	64,84	70	-	45	28	22	6	1108	6F	0,36	-	44	38	22	16	1108	6F	0,45
28 8M .. FMA	28	F27	71,30	70,08	75	-	50	28	22	6	1108	6F	0,44	-	50	38	25	13	1210	6F	0,50
30 8M .. FMA	30	F29	76,39	75,13	83	-	58	28	22	6	1108	6F	0,53	-	-	38	38	-	1615	4F	0,55
32 8M .. FMA	32	F30	81,49	80,16	87	-	63	28	25	3	1610	6F	0,42	-	-	38	38	-	1615	4F	0,59
34 8M .. FMA	34	F31	86,58	85,22	91	-	64	28	25	3	1610	6F	0,55	-	-	38	38	-	1615	4F	0,77
36 8M .. FMA	36	F33	91,67	90,30	97	-	68	28	25	3	1610	6F	0,68	-	-	38	38	-	1615	4F	0,96
38 8M .. FMA	38	F34	96,77	95,39	102	-	72	28	25	3	1610	6F	0,80	-	-	38	38	-	1615	4F	1,15
40 8M .. FMA	40	F35	101,86	100,49	106	-	76	28	25	3	1610	6F	1,00	-	-	38	38	-	1615	4F	1,34
44 8M .. FMA	44	F38	112,05	110,67	120	93	-	28	32	4	2012	6F	1,20	-	86	38	32	3	2012	5F	1,33
48 8M .. FMA	48	F40	122,23	120,86	128	96	-	28	32	4	2012	8F	1,60	-	90	38	32	3	2012	5F	1,78
56 8M .. FMA	56	F48	142,60	141,23	150	110	-	28	32	4	2012	8F	2,40	-	110	38	32	3	2012	5F	3,76
64 8M.. FMA	64	F52	162,97	161,60	168	110	137	28	32	4	2012	8AF	2,70	125	-	38	45	7	2517	8F	4,20
72 8M .. FMA	72	F57	183,35	181,97	192	110	158	28	32	4	2012	8AF	3,30	125	158	38	45	7	2517	8AF	4,30
80 8M .. MA	80	-	203,72	202,35	-	110	180	28	32	4	2012	8AF	3,50	125	180	38	45	7	2517	8E	4,60
90 8M .. MA	90	-	229,18	227,81	-	110	204	28	32	4	2012	8A	3,65	125	204	38	45	7	2517	8A	5,00
112 8M .. MA	112	-	285,21	283,33	-	-	-	-	-	-	-	-	-	125	254	38	45	7	2517	8A	6,20
144 8M .. MA	144	-	366,69	265,32	-	125	336	28	32	4	2517	8A	4,80	125	336	38	45	7	2517	8A	9,00

.. Belt width in mm = 20 or 30.

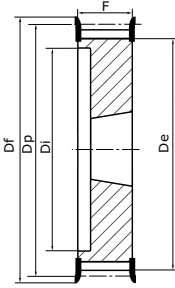

TAPER LOCK TIMING PULLEYS - «HTD» 14M
PITCH: 14 mm
MATERIALS :

Steel C40 UNI 7845

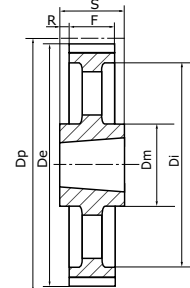
Cast iron G25 UNI 5007


Type 5F

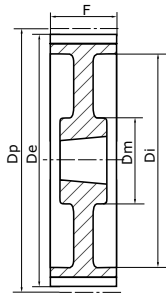
Flanged solid pulley


Type 6F

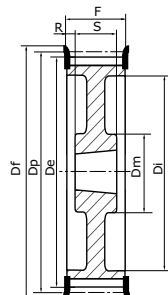
Flanged solid pulley


Type 7E

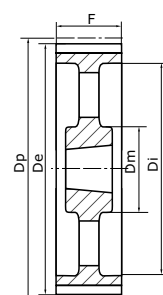
Hollowed pulley not flanged


Type 9A

Light pulley not flanged


Type 9AF

Light flanged solid pulley


Type 9E

Hollowed pulley not flanged

Steel = from 28 to 56 teeth
Cast iron = from 64 to 216 teeth

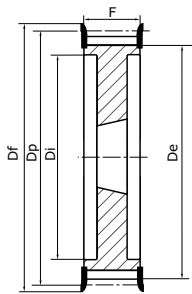
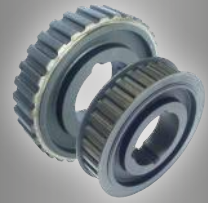
Reference	Z	Flange N°	Dp	De	Df	Di	14M-40 for belt with 40mm width						14M-55 for belt with 55mm width							
							Dm	F	S	R	Bush	Type	Kg	Dm	F	S	R	Bush	Type	Kg
28 14M .. FMA	28	F40	124,78	122,12	128	94	-	54	32	11	2012	5F	2,07	-	70	32	19	2012	5F	2,20
29 14M .. FMA	29	F43	129,23	126,57	138	98	-	54	32	11	2012	5F	2,38	-	70	32	19	2012	5F	2,74
30 14M .. FMA	30	F43	133,69	130,99	138	98	-	54	32	11	2012	5F	2,65	-	70	45	12,5	2517	6F	2,70
32 14M .. FMA	32	F49	142,60	139,88	154	108	-	54	32	11	2012	5F	3,40	-	70	45	12,5	2517	6F	3,66
34 14M .. FMA	34	F51	151,52	148,79	160	110	-	54	45	4,5	2517	5F	3,87	-	70	45	12,5	2517	6F	4,55
36 14M .. FMA	36	F52	160,43	157,68	168	120	-	54	45	4,5	2517	5F	4,80	-	70	45	12,5	2517	6F	5,20
38 14M .. FMA	38	F81	169,34	166,60	184	130	-	54	45	4,5	2517	5F	5,40	-	70	45	12,5	2517	6F	6,20
40 14M .. FMA	40	F56	178,25	175,49	188	138	-	54	45	4,5	2517	5F	6,00	-	70	45	12,5	2517	5F	7,00
44 14M .. FMA	44	F61	196,08	193,28	212	155	-	54	51	1,5	3020	5F	7,80	-	70	51	9,5	3020	5F	8,60
48 14M .. FMA	48	F62	213,90	211,11	226	170	-	54	51	1,5	3020	5F	9,40	-	70	51	9,5	3020	5F	10,40
56 14M .. FMA	56	F66	249,55	246,76	256	208	170	54	51	1,5	3020	9AF	10,80	170	70	51	9,5	3020	9AF	12,40
64 14M .. FMA	64	F70	285,21	282,41	296	240	170	54	51	1,5	3020	9AF	13,40	170	70	51	9,5	3020	9AF	14,50
72 14M .. MA	72	-	320,86	318,06	-	280	170	54	51	1,5	3020	9A	15,20	170	70	51	9,5	3020	9A	16,20
80 14M .. MA	80	-	356,51	353,71	-	315	170	54	51	1,5	3020	9E	16,00	170	70	51	9,5	3020	9E	17,50
90 14M .. MA	90	-	401,07	398,28	-	360	170	54	51	1,5	3020	9E	17,80	170	70	51	9,5	3020	9E	20,10
112 14M .. MA	112	-	499,11	496,32	-	457	170	54	51	1,5	3020	9E	25,60	170	70	51	9,5	3020	9E	28,40
144 14M .. MA	144	-	641,71	638,92	-	600	170	54	51	1,5	3020	9E	32,00	170	70	51	9,5	3020	9E	36,20
168 14M .. MA	168	-	748,66	745,87	-	706	170	54	51	1,5	3020	9E	44,00	170	70	51	9,5	3020	9E	49,00
192 14M .. MA	192	-	855,62	852,82	-	813	170	54	51	1,5	3020	9E	49,00	170	70	51	9,5	3020	9E	53,00
216 14M .. MA	216	-	962,57	959,76	-	920	170	54	51	1,5	3020	9E	55,00	170	70	89	9,5	3535	7E	65,80

.. Belt width in mm = 40 or 55.

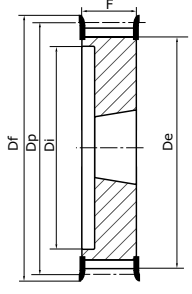


TAPER LOCK TIMING PULLEYS - «HTD» 14M

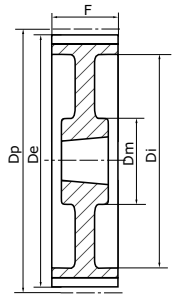
PITCH: 14 mm
 MATERIALS :
 Steel C40 UNI 7845
 Cast iron G25 UNI 5007



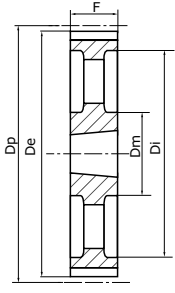
Type 5F
Flanged solid pulley



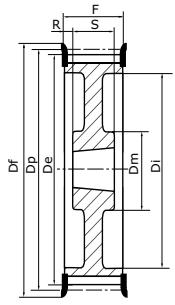
Type 6F
Flanged solid pulley



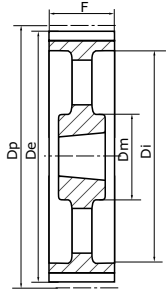
Type 9A
Light pulley not flanged



Type 4E
Hollowed pulley not flanged



Type 9AF
Light flanged solid pulley



Type 9E
Hollowed pulley not flanged

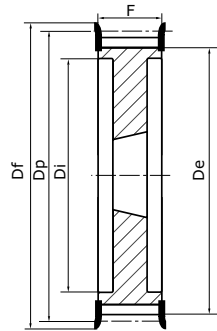
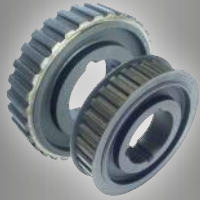
Steel = from 28 to 56 teeth
 Cast iron = from 64 to 216 teeth

Reference	Z	Flange N°	Dp	De	Df	Di	14M-85 for belt with 85mm width						14M-115 for belt with 85mm width							
							Dm	F	S	R	Bush	Type	Kg	Dm	F	S	R	Bush	Type	Kg
28 14M .. FMA	28	F40	124,78	122,12	128	98	-	102	45	28,5	2517	5F	2,70	-	133	45	44	2517	5F	3,77
29 14M .. FMA	29	F43	129,23	126,57	138	100	-	102	45	28,5	2517	6F	3,40	-	133	45	44	2517	5F	4,00
30 14M .. FMA	30	F43	133,69	130,99	138	100	-	102	45	28,5	2517	6F	3,75	-	133	45	44	2517	5F	5,00
32 14M .. FMA	32	F49	142,60	139,88	154	108	-	102	45	28,5	2517	6F	4,80	-	133	45	44	2517	5F	6,80
34 14M .. FMA	34	F51	151,52	148,79	160	110	-	102	45	28,5	2517	6F	6,00	-	133	45	44	2517	5F	6,80
36 14M .. FMA	36	F52	160,43	157,68	168	120	-	102	51	25,5	3020	6F	5,80	-	133	51	41	3020	5F	7,00
38 14M .. FMA	38	F81	169,34	166,60	184	130	-	102	51	25,5	3020	6F	6,80	-	133	51	41	3020	5F	8,40
40 14M .. FMA	40	F56	178,25	175,49	188	138	-	102	51	25,5	3020	5F	8,00	-	133	51	41	3020	5F	9,20
44 14M .. FMA	44	F61	196,08	193,28	212	153	-	102	51	25,5	3020	5F	11,80	-	133	76	28,5	3030	5F	14,00
48 14M .. FMA	48	F62	213,90	211,11	226	170	-	102	51	25,5	3020	5F	15,10	-	133	76	28,5	3030	5F	17,10
56 14M .. FMA	56	F66	249,55	246,76	256	220	190	102	65	18,5	3525	5F	19,00	-	133	89	22	3535	5F	24,80
64 14M .. FMA	64	F70	285,21	282,41	296	240	190	102	65	18,5	3525	9AF	23,00	190	133	89	22	3535	9AF	27,00
72 14M .. MA	72	-	320,86	318,06	-	280	190	102	65	18,5	3525	9A	25,00	190	133	89	22	3535	9A	29,00
80 14M .. MA	80	-	356,51	353,71	-	315	190	102	65	18,5	3525	9E	26,00	190	133	89	22	3535	9E	32,00
90 14M .. MA	90	-	401,07	398,28	-	360	190	102	65	18,5	3525	9E	27,80	190	133	89	22	3535	9E	36,50
112 14M .. MA	112	-	499,11	496,32	-	457	190	102	65	18,5	3525	9E	36,50	190	133	89	22	3535	9E	46,00
144 14M .. MA	144	-	641,71	638,92	-	600	190	102	65	18,5	3525	9E	48,00	230	133	102	15,5	4040	9E	68,00
168 14M .. MA	168	-	748,66	745,87	-	706	190	102	65	18,5	3525	9E	60,00	230	133	102	15,5	4040	9E	82,60
192 14M .. MA	192	-	855,62	852,82	-	813	190	102	102	-	4040	4E	86,00	230	133	102	15,5	4040	9E	96,00
216 14M .. MA	216	-	962,57	959,76	-	920	190	102	102	-	4040	4E	91,50	230	133	102	15,5	4040	9E	107,00

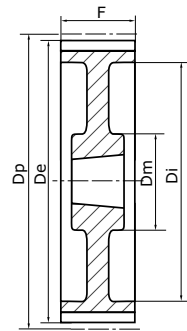
.. Belt width in mm = 85 or 115


TAPER LOCK TIMING PULLEYS - «HTD» 14M

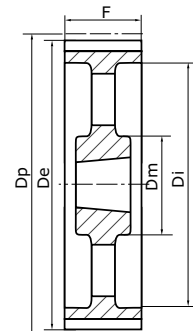
PITCH: 14 mm
MATERIALS :
 Steel C40 UNI 7845
 Cast iron G25 UNI 5007



Type 5F
Flanged solid pulley



Type 9A
Light pulley not flanged



Type 9E
Hollowed pulley not flanged

Steel = from 38 to 56 teeth
Cast iron = from 64 to 216 teeth

14M-170
 for belt with 170mm width

Ref.	Z	Flasque	Dp	De	Df	Di	Dm	F	S	R	Bush	Type	Kg
38 14M 170 FMA	38	F81	169,34	166,60	184	130	-	187	76	55,5	3030	5F	11,70
40 14M 170 FMA	40	F56	178,25	175,49	188	138	-	187	76	55,5	3030	5F	13,00
44 14M 170 FMA	44	F61	196,08	193,28	212	153	-	187	89	49	3535	5F	15,00
48 14M 170 FMA	48	F62	213,90	211,11	226	170	-	187	89	49	3535	5F	19,00
56 14M 170 FMA	56	F66	249,55	246,76	256	208	-	187	89	49	3535	5F	28,50
64 14M 170 FMA	64	F70	285,21	282,41	296	240	-	187	102	42,5	4040	5F	41,00
72 14M 170 MA	72	-	320,86	318,06	-	280	230	187	102	42,5	4040	9A	46,90
80 14M 170 MA	80	-	356,51	353,71	-	315	230	187	102	42,5	4040	9A	48,00
90 14M 170 MA	90	-	401,07	398,28	-	360	230	187	102	42,5	4040	9E	52,50
112 14M 170 MA	112	-	499,11	496,32	-	457	265	187	127	30	5050	9E	74,50
144 14M 170 MA	144	-	641,71	638,92	-	600	265	187	127	30	5050	9E	91,00
168 14M 170 MA	168	-	748,66	745,87	-	706	265	187	127	30	5050	9E	116,00
192 14M 170 MA	192	-	855,62	852,82	-	813	265	187	127	30	5050	9E	134,00
216 14M 170 MA	216	-	962,57	959,76	-	920	265	187	127	30	5050	9E	146,50