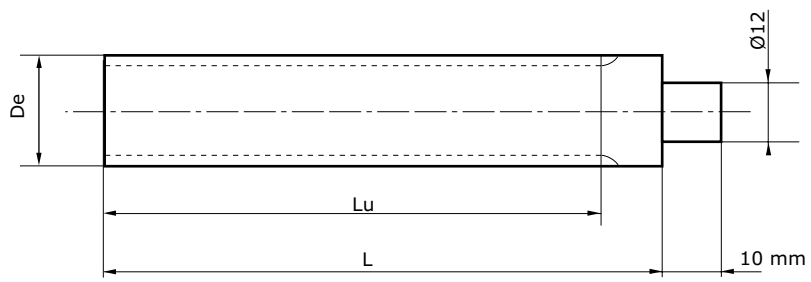




Dimensions in mm

## TIMING BARS - «HTD» TYPE

**MATERIAL :**  
Aluminum UNI 3571 TA16



| 3M Pitch of 3 mm |    |       |       |     |     | 5M Pitch of 5 mm |    |        |        |     |     |
|------------------|----|-------|-------|-----|-----|------------------|----|--------|--------|-----|-----|
| Reference        | Z  | De    | Dp    | Lu  | L   | Reference        | Z  | De     | Dp     | Lu  | L   |
| 9 HTD 3M         | 9  | 8,59  | 7,83  | 75  | 100 | 12 HTD 5M        | 12 | 19,10  | 17,96  | 150 | 165 |
| 10 HTD 3M        | 10 | 9,55  | 8,79  | 75  | 100 | 13 HTD 5M        | 13 | 20,69  | 19,55  | 150 | 165 |
| 11 HTD 3M        | 11 | 10,50 | 9,74  | 75  | 100 | 14 HTD 5M        | 14 | 22,28  | 21,14  | 175 | 183 |
| 12 HTD 3M        | 12 | 11,46 | 10,70 | 100 | 125 | 15 HTD 5M        | 15 | 23,87  | 22,73  | 175 | 183 |
| 13 HTD 3M        | 13 | 12,41 | 11,65 | 100 | 125 | 16 HTD 5M        | 16 | 25,46  | 24,32  | 175 | 183 |
| 14 HTD 3M        | 14 | 13,37 | 12,61 | 100 | 125 | 17 HTD 5M        | 17 | 27,06  | 25,92  | 175 | 183 |
| 15 HTD 3M        | 15 | 14,32 | 13,56 | 100 | 125 | 18 HTD 5M        | 18 | 28,65  | 27,51  | 200 | 200 |
| 16 HTD 3M        | 16 | 15,28 | 14,52 | 125 | 155 | 19 HTD 5M        | 19 | 30,24  | 29,10  | 200 | 200 |
| 17 HTD 3M        | 17 | 16,23 | 15,47 | 125 | 155 | 20 HTD 5M        | 20 | 31,83  | 30,69  | 200 | 200 |
| 18 HTD 3M        | 18 | 17,19 | 16,43 | 125 | 155 | 21 HTD 5M        | 21 | 33,42  | 32,28  | 200 | 200 |
| 19 HTD 3M        | 19 | 18,14 | 17,38 | 125 | 155 | 22 HTD 5M        | 22 | 35,01  | 33,87  | 200 | 200 |
| 20 HTD 3M        | 20 | 19,10 | 18,34 | 150 | 165 | 23 HTD 5M        | 23 | 36,61  | 35,47  | 200 | 200 |
| 21 HTD 3M        | 21 | 20,05 | 19,25 | 150 | 165 | 24 HTD 5M        | 24 | 38,20  | 37,06  | 200 | 200 |
| 22 HTD 3M        | 22 | 21,01 | 20,25 | 150 | 165 | 25 HTD 5M        | 25 | 39,79  | 38,65  | 200 | 200 |
| 23 HTD 3M        | 23 | 21,96 | 21,20 | 150 | 165 | 26 HTD 5M        | 26 | 41,38  | 40,24  | 200 | 200 |
| 24 HTD 3M        | 24 | 22,92 | 22,16 | 150 | 165 | 27 HTD 5M        | 27 | 42,97  | 41,83  | 200 | 200 |
| 25 HTD 3M        | 25 | 23,87 | 23,11 | 150 | 165 | 28 HTD 5M        | 28 | 44,56  | 43,42  | 200 | 200 |
| 26 HTD 3M        | 26 | 24,83 | 24,07 | 150 | 165 | 29 HTD 5M        | 29 | 46,15  | 45,01  | 200 | 200 |
| 27 HTD 3M        | 27 | 25,78 | 25,02 | 150 | 165 | 30 HTD 5M        | 30 | 47,75  | 46,60  | 200 | 200 |
| 28 HTD 3M        | 28 | 26,74 | 25,98 | 150 | 165 | 31 HTD 5M        | 31 | 49,34  | 48,20  | 200 | 200 |
| 29 HTD 3M        | 29 | 27,69 | 26,93 | 150 | 165 | 32 HTD 5M        | 32 | 50,93  | 49,79  | 200 | 200 |
| 30 HTD 3M        | 30 | 28,65 | 27,89 | 175 | 183 | 33 HTD 5M        | 33 | 52,52  | 51,38  | 200 | 200 |
| 31 HTD 3M        | 31 | 29,60 | 28,84 | 175 | 183 | 34 HTD 5M        | 34 | 54,11  | 52,97  | 200 | 200 |
| 32 HTD 3M        | 32 | 30,56 | 29,80 | 175 | 183 | 35 HTD 5M        | 35 | 55,70  | 54,56  | 200 | 200 |
| 33 HTD 3M        | 33 | 31,54 | 30,75 | 175 | 183 | 36 HTD 5M        | 36 | 57,30  | 56,16  | 200 | 200 |
| 34 HTD 3M        | 34 | 32,47 | 31,71 | 175 | 183 | 38 HTD 5M        | 38 | 60,48  | 59,34  | 200 | 200 |
| 35 HTD 3M        | 35 | 33,42 | 32,66 | 175 | 183 | 40 HTD 5M        | 40 | 63,66  | 62,52  | 200 | 200 |
| 36 HTD 3M        | 36 | 34,38 | 33,62 | 200 | 200 | 42 HTD 5M        | 42 | 66,85  | 65,71  | 200 | 200 |
| 37 HTD 3M        | 37 | 35,33 | 34,57 | 200 | 200 | 44 HTD 5M        | 44 | 70,03  | 68,89  | 200 | 200 |
| 38 HTD 3M        | 38 | 36,29 | 35,53 | 200 | 200 | 45 HTD 5M        | 45 | 71,62  | 70,48  | 200 | 200 |
| 39 HTD 3M        | 39 | 37,24 | 36,48 | 200 | 200 | 46 HTD 5M        | 46 | 73,21  | 72,07  | 200 | 200 |
| 40 HTD 3M        | 40 | 38,20 | 37,44 | 200 | 200 | 48 HTD 5M        | 48 | 76,39  | 75,25  | 200 | 200 |
| 42 HTD 3M        | 42 | 40,11 | 39,34 | 200 | 200 | 50 HTD 5M        | 50 | 79,58  | 78,43  | 200 | 200 |
| 44 HTD 3M        | 44 | 42,02 | 41,26 | 200 | 200 | 54 HTD 5M        | 54 | 85,94  | 84,80  | 200 | 200 |
| 45 HTD 3M        | 45 | 42,97 | 42,21 | 200 | 200 | 60 HTD 5M        | 60 | 95,49  | 94,35  | 200 | 200 |
| 48 HTD 3M        | 48 | 45,84 | 45,08 | 200 | 200 | 62 HTD 5M        | 62 | 98,68  | 97,54  | 200 | 200 |
| 50 HTD 3M        | 50 | 47,75 | 46,99 | 200 | 200 | 72 HTD 5M        | 72 | 114,59 | 113,45 | 200 | 200 |
| 52 HTD 3M        | 52 | 49,66 | 48,90 | 200 | 200 |                  |    |        |        |     |     |
| 54 HTD 3M        | 54 | 51,57 | 50,81 | 200 | 200 |                  |    |        |        |     |     |
| 56 HTD 3M        | 56 | 53,48 | 52,72 | 200 | 200 |                  |    |        |        |     |     |
| 60 HTD 3M        | 60 | 57,30 | 56,54 | 200 | 200 |                  |    |        |        |     |     |
| 62 HTD 3M        | 62 | 59,21 | 58,45 | 200 | 200 |                  |    |        |        |     |     |
| 64 HTD 3M        | 64 | 61,12 | 60,36 | 200 | 200 |                  |    |        |        |     |     |
| 66 HTD 3M        | 66 | 63,03 | 62,27 | 200 | 200 |                  |    |        |        |     |     |
| 68 HTD 3M        | 68 | 64,94 | 64,18 | 200 | 200 |                  |    |        |        |     |     |
| 70 HTD 3M        | 70 | 66,85 | 66,09 | 200 | 200 |                  |    |        |        |     |     |
| 72 HTD 3M        | 72 | 68,75 | 67,99 | 200 | 200 |                  |    |        |        |     |     |

**MATERIAL :**  
Steel

| 8M Pitch of 8 mm |    |        |     |     |
|------------------|----|--------|-----|-----|
| Reference        | Z  | De     | Lu  | L   |
| 18 HTD 8M        | 18 | 44,47  | 200 | 200 |
| 19 HTD 8M        | 19 | 47,01  | 200 | 200 |
| 20 HTD 8M        | 20 | 49,56  | 200 | 200 |
| 21 HTD 8M        | 21 | 52,11  | 200 | 200 |
| 22 HTD 8M        | 22 | 54,65  | 200 | 200 |
| 23 HTD 8M        | 23 | 57,20  | 200 | 200 |
| 24 HTD 8M        | 24 | 59,75  | 200 | 200 |
| 25 HTD 8M        | 25 | 62,29  | 200 | 200 |
| 26 HTD 8M        | 26 | 64,84  | 200 | 200 |
| 28 HTD 8M        | 28 | 69,93  | 200 | 200 |
| 30 HTD 8M        | 30 | 75,02  | 200 | 200 |
| 32 HTD 8M        | 32 | 80,12  | 200 | 200 |
| 34 HTD 8M        | 34 | 85,21  | 200 | 200 |
| 35 HTD 8M        | 35 | 87,76  | 200 | 200 |
| 36 HTD 8M        | 36 | 90,30  | 200 | 200 |
| 38 HTD 8M        | 38 | 95,40  | 200 | 200 |
| 40 HTD 8M        | 40 | 100,49 | 200 | 200 |
| 44 HTD 8M        | 44 | 110,68 | 200 | 200 |
| 48 HTD 8M        | 48 | 120,86 | 200 | 200 |

