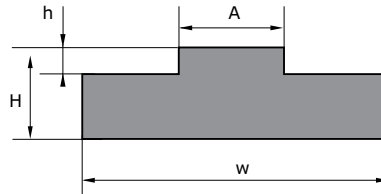
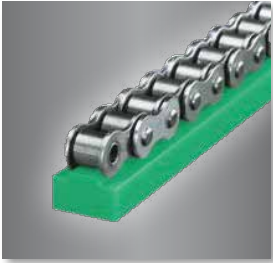


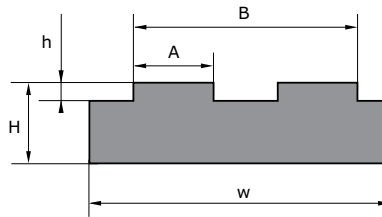
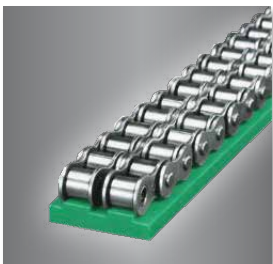


PEHD GREEN WEAR STRIPS

Wear strips and rails are supplied in lengths of 2 meters. It is possible to supply specific lengths on request.


MS

Reference	ISO	Pitch	W	H	A	h	Kg/m
MS-1	06B-1	9,525	15	10	5,5	1,5	0,135
MS-2	08B-1	12,7	20	10	7,5	2,2	0,165
MS-215	08B-1	12,7	20	15	7,5	2,2	0,260
MS-220	08B-1	12,7	20	20	7,4	2,2	0,350
MS-3	10B-1	15,875	20	10	9,3	2,6	0,160
MS-315	10B-1	15,875	20	15	9,3	2,6	0,260
MS-320	10B-1	15,875	20	20	9,3	2,6	0,350
MS-4	12B-1	19,05	25	10	11,3	2,4	0,210
MS-415	12B-1	19,05	25	15	11,3	2,4	0,325
MS-420	12B-1	19,05	25	20	11,3	2,4	0,440
MS-5	16B-1	25,4	40	15	16,5	3,5	0,470
MS-520	16B-1	25,4	40	20	16,5	3,5	0,660
MS-6	20B-1	31,75	45	15	19	4,2	0,530
MS-620	20B-1	31,75	45	20	19	4,3	0,720
MS-7	24B-1	38,1	60	15	24,7	5,5	0,785
MS-8	28B-1	44,45	75	20	30,0	6,8	1,130
MS-9	32B-1	50,8	80	20	30,0	7,7	1,210

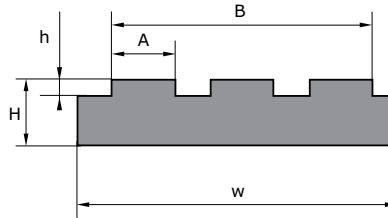
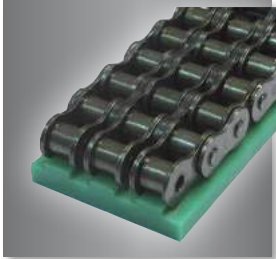

MD

Reference	ISO	Pitch	W	H	A	h	B	Kg/m
MD-1	06B-2	9,525	25	10	5,4	1,5	15,70	0,230
MD-2	08B-2	12,7	35	10	7,5	2,2	21,4	0,306
MD-215	08B-2	12,7	35	15	7,5	2,2	21,4	0,530
MD-3	10B-2	15,875	40	10	9,3	2,6	25,9	0,344
MD-315	10B-2	15,875	40	15	9,2	2,6	26	0,524
MD-4	12B-2	19,05	45	10	11,3	2,4	30,8	0,396
MD-415	12B-2	19,05	45	15	11,3	2,4	30,8	0,598
MD-5	16B-2	25,4	65	15	16,5	3,5	48,3	0,863
MD-520	16B-2	25,4	65	20	16,5	3,5	48,3	1,156
MD-6	20B-2	31,75	70	15	19	4,3	54,5	0,912
MD-620	20B-2	31,75	70	20	19	4,3	54,5	1,232
MD-7	24B-2	38,1	88	20	24,6	5,6	72,9	1,499
MD-8	28B-2	44,45	88,4	25	28,8	6,8	88,4	1,790
MD-9	32B-2	50,8	87,4	30	28,8	7,7	87,4	1,750

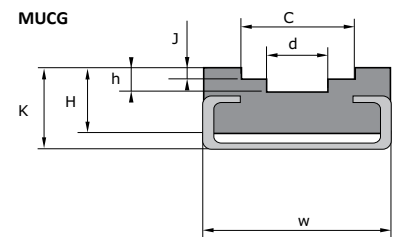
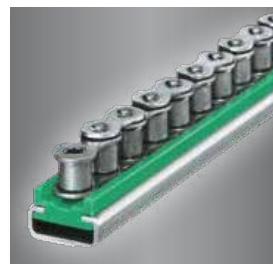
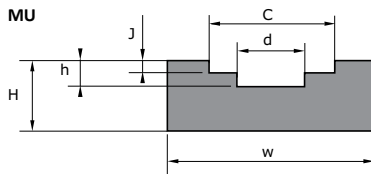
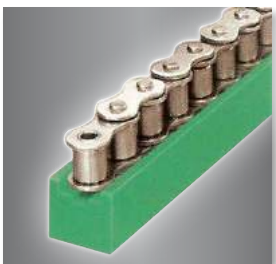


PEHD GREEN WEAR STRIPS

Wear strips and rails are supplied in lengths of 2 meters. It is possible to supply specific lengths on request.



MT			W	H	A	h	B	Kg/m
Reference	ISO	Pitch						
MT-1	06B-3	9,525	35	10	5,4	1,5	25,9	0,306
MT-2	08B-3	12,7	45	10	7,4	2,2	35,3	0,381
MT-215	08B-3	12,7	45	15	7,4	2,2	35,3	0,595
MT-220	08B-3	12,7	45	20	7,4	2,2	35,3	0,808
MT-3	10B-3	15,875	55	10	9,2	2,6	42,4	0,455
MT-4	12B-3	19,05	60	15	11,3	2,4	50,3	0,546
MT-5	16B-3	25,4	95	20	16,5	3,5	80,3	1,167
MT-6	20B-3	31,75	105	15	19	4,2	92,0	1,304
MT-7	24B-3	38,1	135	20	24,7	5,5	121,5	2,247
MT-8	28B-3	44,45	170	25	30,1	6,8	149,3	3,522
MT-9	32B-3	50,8	170	30	30,1	7,7	149,3	4,262



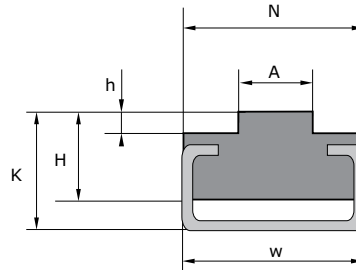
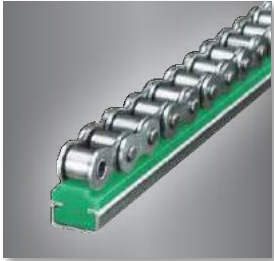
MU & MUCG											
Reference	ISO	Pitch	W	H	C	h	J	d	K	Rail	Kg/m
MU-1	06B-1	9,525	20	15	9,2	4,2	2,8	4			0,257
MU-2	08B-1	12,7	25	15	12,7	4,8	3,5	5			0,308
MU-3	10B-1	15,875	25	15	15,2	5,1	3,6	6			0,296
MU-4	12B-1	19,05	25	20	16,7	5,7	3,9	7			0,403
MU-5	16B-1	25,4	35	25	24,4	10	8,4	9			0,624
MUCG-1*	06B-1	9,525	20	14	9,4	4,2	2,8	4	17	C2010	0,720
MUCG-2*	08B-1	12,7	20	24	12,8	5	3,5	5	11	C2812	1,140
MUCG-3*	10B-1	15,875	24	28	15,4	5	3,6	6	18	C2812	1,130
MUCG-4*	12B-1	19,05	24	28	17	5,7	3,9	7	18	C2812	1,270
MUCG-5*	16B-1	25,4	33	38	24	10,6	8,4	9	30	C3818	2,030

* Add the reference /ENS to have the wear strip and the rail



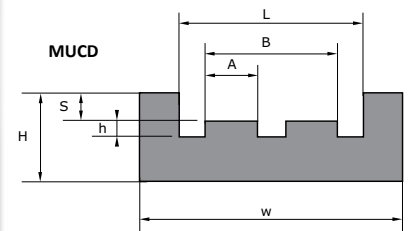
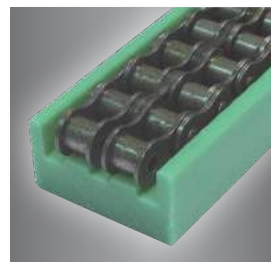
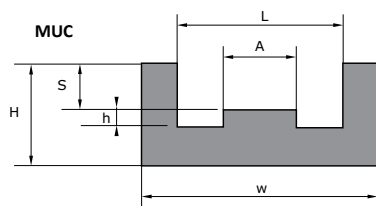
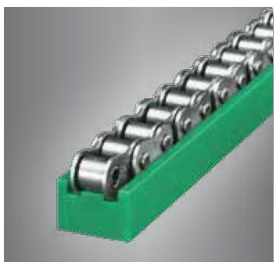
PEHD GREEN WEAR STRIPS

Wear strips and rails are supplied in lengths of 2 meters. It is possible to supply specific lengths on request.


MTCG

Wear strip references	ISO	Pitch	W	N	H	K	h	A	Rail	Kg/m
MTCG-1*	06B-1	9,525	20		15	17	1,5	5,4	C2010	0,620
MTCG-2*	08B-1	12,7	20	17	15	17	2,2	7,5	C2010	0,695
MTCG-3*	10B-1	15,875	20	17	15	17	2,6	9,3	C2010	0,700
MTCG-4*	12B-1	19,05	28	23,5	15	18	2,4	11,3	C2812	1,170
MTCG-4/20*	12B-1	19,05	20	20	15	17	2,4	11,3	C2010	0,830
MTCG-5*	16B-1	25,4	28	23,5	15	18	3,5	16,5	C2812	2,245
MTCG-6*	20B-1	31,75	28	28	15	18	4,3	19	C2812	2,305
MTCG-7*	24B-1	38,1	38	33	25	30	5,5	24,7	C3818	2,390
MTCG-8*	28B-1	44,45	38	38	23	30	6,8	30	C05	2,410
MTCG-9*	32B-1	50,8	38	38	23	30	7,7	30	C05	2,480

* Add the reference /ENS to have the wear strip and the rail

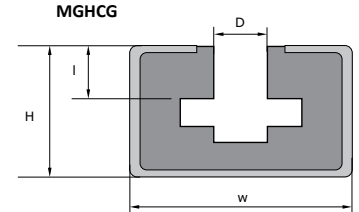
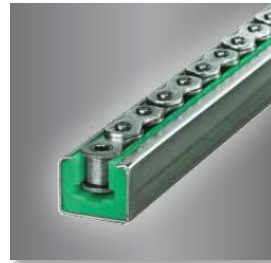
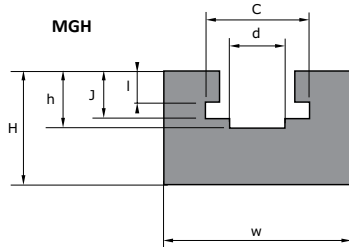
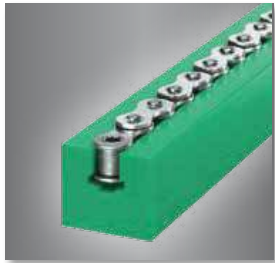

MUC & MUCD

Wear strip references	ISO	Pitch	W	H	L	h	A	S	B	Kg/m
MUC-1	06B-1	9,525	25	10	15	1,5	5,4	4,4		0,170
MUC-2	08B-1	12,7	30	15	20	2,2	7,4	7,2		0,275
MUC-3	10B-1	15,875	33	20	23	2,6	9,2	9,5		0,405
MUC-4	12B-1	19,05	38	20	28	2,4	11,3	11,2		0,410
MUC-5	16B-1	25,4	51	25	41	3,5	16,5	16,5		0,510
MUCD-1	06B-2	9,525	36	15	26	1,5	5,4	4,4	16	0,390
MUCD-2	08B-2	12,7	45	20	35	2,2	7,4	7,2	21	0,620
MUCD-3	10B-2	15,875	50	25	40	2,6	9,2	9,5	26	0,816
MUCD-4	12B-2	19,05	56	25	46	2,4	11,3	11,1	31	0,810
MUCD-5	16B-2	25,4	85	30	75	3,5	16,5	16,5	48	1,200



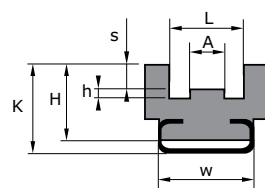
PEHD GREEN WEAR STRIPS

Wear strips and rails are supplied in lengths of 2 meters. It is possible to supply specific lengths on request.



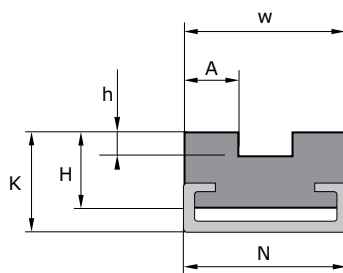
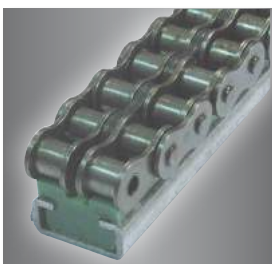
MGH & MGHCG

Wear strip references	ISO	Pitch	W	H	C	h	I	d	J	Rail	Kg/m
MGH-1	06B-1	9,525	20	25	9,3	9,9	5,5	4	8,7		0,414
MGH-2	08B-1	12,7	24	30	12,8	12,7	7,5	5	11,5		0,564
MGH-3	10B-1	15,875	30	35	15,4	14,8	9,3	6	13,5		0,832
MGH-4	12B-1	19,05	40	35	16,9	17,5	11,3	7,9	15,9		1,106
MGH-5	16B-1	25,4	40	45	24,4	27	16,5	9	25,7		1,231
MGH-6	20B-1	31,75	50	50	28	31,7	18	11	29,5		1,726
MGH-7	24B-1	38,1	60	60	36,5	41,2	24	16	38,2		2,332
MGH-8	28B-1	44,45	60	70	41	49	30	17	47		3,173
MGH-9	32B-1	50,8	70	75	44,5	50	30	19	47,3		3,264
MGHCG-1*	06B-1	9,525	30	24			5,6			C3024	2,150
MGHCG-2*	08B-1	12,7	30	24			7,6			C3024	2,150
MGHCG-2E*	08B-1	12,7	28	16			7,6			C2816	2,100
MGHCG-3*	10B-1	15,875	30	24			9,3			C3024	2,100
MGHCG-4*	12B-1	19,05	30	24			11,3			C3024	2,060
MGHCG-5*	16B-1	25,4	45	40			16,5			C4540	2,060



MUCCG

Wear strip references	ISO	Pitch	W	H	K	L	h	A	S	Rail	Kg/m
MUCCG-1*	06B-1	9,525	20	14	17	13	1,5	3,8	1,1	C2010	0,760
MUCCG-2*	08B-1	12,7	20	16	20	16,3	2,2	5,7	1,6	C2010	1,100
MUCCG-3*	10B-1	15,875	28	16	20	19,2	2,6	7,4	2,1	C2812	1,305
MUCCG-4*	12B-1	19,05	28	18	22	21,8	2,4	9,2	2,8	C2812	2,335
MUCCG-5*	16B-1	25,4	38	25	30	35	3,5	15	3,3	C3818	2,440



MTCGD

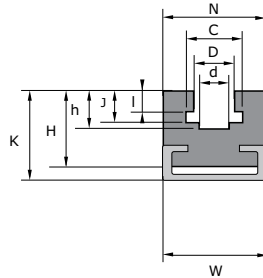
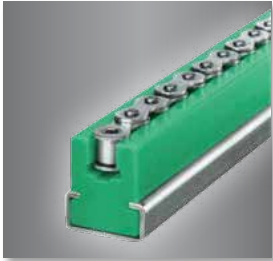
Wear strip references	ISO	Pitch	W	N	H	K	h	A	Rail	Kg/m
MTCGD-1*	06B-2	9,525	15,5	20	14	17	1,5	5,4	C2010	0,615
MTCGD-2*	08B-2	12,7	21,4	20	15	17	2,2	7,5	C2010	0,715
MTCGD-3*	10B-2	15,875	25,7	20	15	17	2,6	9,3	C2010	1,165
MTCGD-4*	12B-2	19,05	30,7	28	15	20	2,4	11,3	C2812	1,200
MTCGD-5*	16B-2	25,4	48	38	20	27	3,5	16,5	C3818	1,170
MTCGD-6*	20B-2	31,75	55	38	25	30	4,3	19	C3818	2,480
MTCGD-7*	24B-2	38,1	72	38	30	35	5,5	24,7	C3818	3,020

* Add the reference /ENS to have the wear strip and the rail

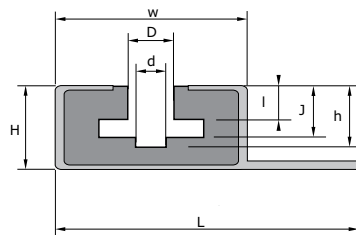
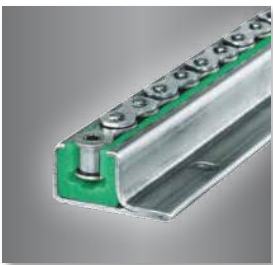


PEHD GREEN WEAR STRIPS

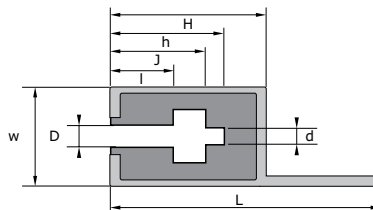
Wear strips and rails are supplied in lengths of 2 meters. It is possible to supply specific lengths on request.


MGHLCG

Wear strip references	ISO	Pitch	W	N	H	K	I	J	h	d	D	C	Rail	Kg/m
MGHLCG-1*	06B-1	9,525	20	20	17,5	21	5,5	8,7	10	4	6,6	9,4	C2010	0,622
MGHLCG-2*	08B-1	12,7	28	24	28	32	7,4	11,5	13	5	8,7	12,8	C2816	1,450
MGHLCG-3*	10B-1	15,875	28	24	28	32	9,3	13,5	14,8	6	10,4	15,4	C2816	1,402
MGHLCG-4*	12B-1	19,05	38	32	35	43	11,3	15,9	17,5	7	12,3	17	C3818	1,709
MGHLCG-5*	16B-1	25,4	38	40	45	50	16	25,7	27,7	10	16,4	24	C3818	1,600
MGHLCG-6*	20B-1	31,75	60	60	50	55	18	29,3	31,7	11	20	28	C6020	4,800
MGHLCG-7*	24B-1	38,1	60	60	60	65	24	38,2	41,2	16	27	36,6	C6020	5,000
MGHLCG-8*	28B-1	44,45	60	70	75	80	30	46,9	49	17	30	40	C6020	6,200
MGHLCG-9*	32B-1	50,8	60	70	75	80	30	47,3	50	19	31	44,6	C6020	6,200


MGHPCG

Wear strip references	ISO	Pitch	H	W	L	I	J	h	d	D	Rail	Kg/m
MGHPCG-1*	06B-1	9,525	25	31	53	5,6	8,7	9,9	4	6,6	C15	2,340
MGHPCG-2*	08B-1	12,7	25	31	53	7,6	11,5	12,7	5	8,7	C15	2,300
MGHPCG-3*	10B-1	15,875	25	31	53	9,3	13,5	14,8	6	10,4	C15	2,250
MGHPCG-4*	12B-1	19,05	25	31	53	11,5	15,9	17,5	7	12,3	C15	2,250

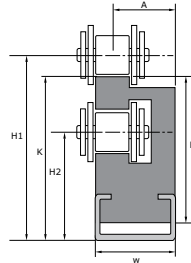

MGHGCG

Wear strip references	ISO	Pitch	H	W	L	I	J	h	d	D	Rail	Kg/m
MGHGCG-1*	06B-1	9,525	25	31	47	5,6	8,7	9,9	4	6,6	C14	2,150
MGHGCG-2*	08B-1	12,7	25	31	47	7,6	11,5	12,7	5	8,7	C14	2,150
MGHGCG-3*	10B-1	15,875	25	31	47	9,3	13,5	14,8	6	10,4	C14	2,100
MGHGCG-4*	12B-1	19,05	25	31	47	11,5	15,9	17,5	7	12,3	C14	2,060

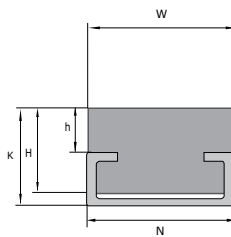
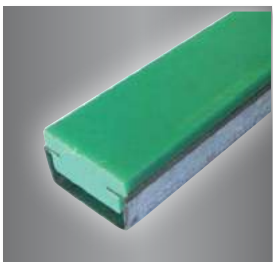


PEHD GREEN WEAR STRIPS

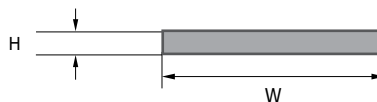
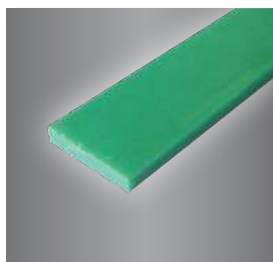
Wear strips and rails are supplied in lengths of 2 meters. It is possible to supply specific lengths on request.


M2PCG

Wear strip references	ISO	Pitch	W	H1	H2	A	K	H	Rail	Kg/m
M2PCG-1*	06B-1	9,525	20	31,6	19,5	17,3	28,4	26,4	C2010	0,900
M2PCG-2*	08B-1	12,7	20	33,8	18	16,5	30	287	C2010	0,960
M2PCG-3*	10B-1	15,875	20	41,1	21	15,5	36	33	C2010	1,120
M2PCG-4*	12B-1	19,05	28	46,5	24	18,6	41	37	C2812	1,700
M2PCG-5*	16B-1	25,4	38	69,4	34	29,7	61,4	52,4	C3818	3,100


MHCG

Wear strip references	W	N	K	H	h	Rail	Kg/m
MHCG-2006*	20	24	6	5	1	C2405	0,350
MHCG-2011*	20	24	11	10	5,8	C2405	0,450
MHCG-2014*	20	20	14	10	4	C2010	0,790
MHCG-2017*	20	20	17	15	7	C2010	0,880
MHCG-2022*	20	20	20	18	10	C2010	0,940
MHCG-2815*	28	28	15	10	3	C2812	1,180
MHCG-2818*	28	28	18	15	6	C2812	1,320
MHCG-2824*	28	28	24	20	12	C2812	1,488
MHCG-3822*	38	38	22	15	4	C3818	2,200
MHCG-3824*	38	38	24	20	7	C3818	2,460
MHCG-3830*	38	38	30	20	12	C3818	2,690
MHCG-6030*	60	60	30	20	10	C6020	3,260


GR

References	H (mm)	20	25	30	35	40	45	50	60	70	80	90	100
GR..X2	2	0,86	1,12	1,33	1,59	1,77	2,02	2,20	2,63	3,10	3,53	3,96	4,39
GR..X3	3	1,33	1,64	2,02	2,28	2,63	3,01	3,31	3,96	4,65	5,30	5,98	6,59
GR..X5	5	2,20	2,76	3,31	3,87	4,39	4,99	5,51	6,59	7,71	8,78	9,90	10,98