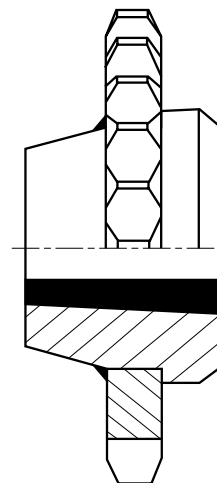
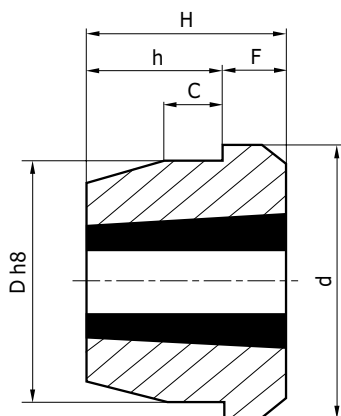




**WELDING HUBS**

MATERIAL : Steel



Reference	bush type	d	H	C	F	h	D	Kg
MSB1210	1210	73	25	10	9	16	60	0,31
MSB1215	1215	73	38	11	16	22	60	0,50
MSB1610	1610	83	25	10	9	16	70	0,37
MSB1615	1615	83	38	11	16	22	70	0,60
MSB2012	2012	96	32	12	10	22	90	0,72
MSB2517	2517	127	45	13	19	26	110	1,80
MSB3020	3020	152	51	18	24	27	130	2,59
MSB3030	3030	152	76	19	25	51	130	3,55
MSB3525	3525	184	65	25	25	40	155	7,30
MSB3535	3535	184	89	25	32	57	155	6,40
MSB4040	4040	225	102	35	32	70	195	13,22
MSB4545	4545	254	114	40	38	76	220	19,30
MSB5050	5050	276	127	40	38	89	242	24,52