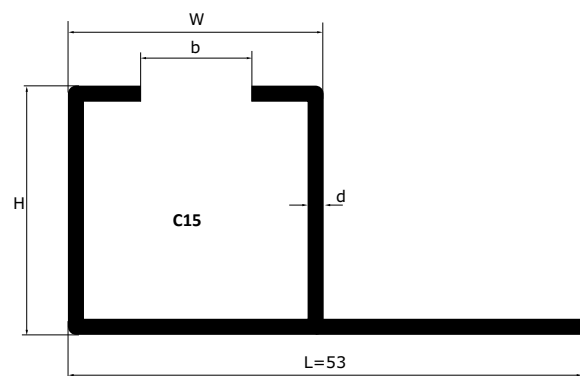
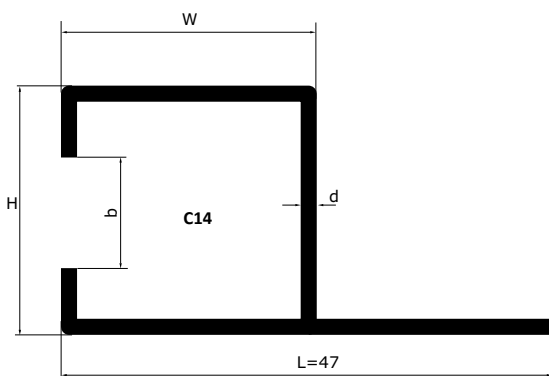
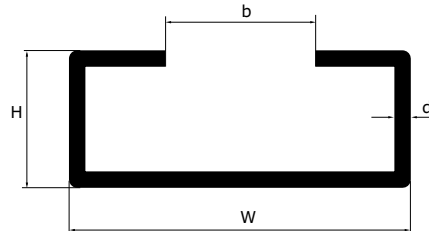
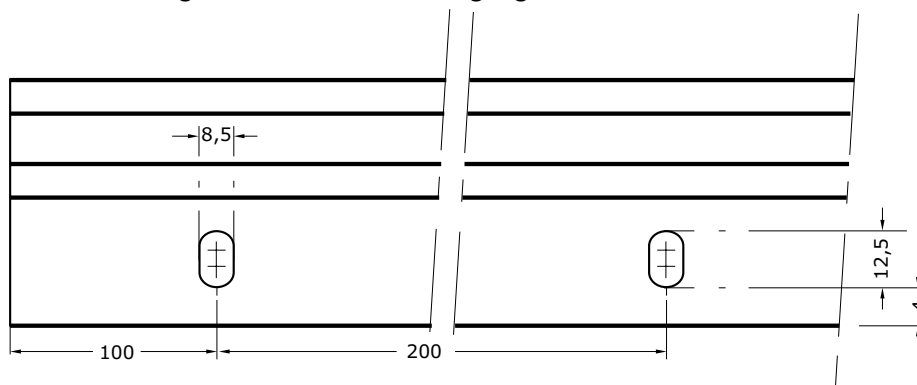




PROFILE / SCHIENEN - VERZINKTER STAHL ODER EDELSTAHL



Lochung der Schiene zur Befestigung des Profils C14 und C15.



Art. Nr.		W	H	b	d	Kg/m
VERZINKT	ROSTFREI					
C2405	C2405IN	24	5,2	17,5	1	0,28
C2010	C2010IN	20	10	10,0	1 / 1,5	0,43
C2812	C2812IN	28	12	14,0	2,2	0,95
C2816	C2816IN	28	16	14,0	2,3	1,15
C3818	C3818IN	38	18	22,0	1,5	0,98
C3024	C3024IN	30	24	20,0	1,5	0,94
C3818	C3818IN	38	18	22,0	2,5	1,43
C4540	C4540IN	45	40	31,0	2	2,05
C6020	C6020IN	60	20	36,0	2,5	2,16
C2815	C2815IN	28	15	12,0	2,3	1,15
C-14	C47IN / 31 / 25	25	31	20,0	2	1,20
C-15	C53IN / 31 / 25	31	25	20,0	2	1,20