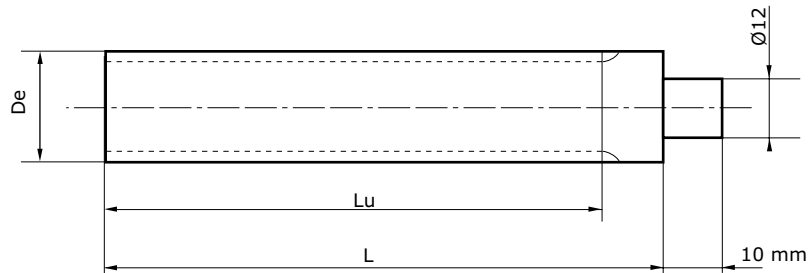
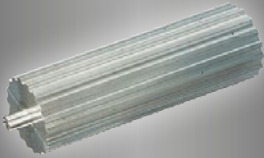




**ZAHNWELLEN TYP „HTD“**

**MATERIAL:**

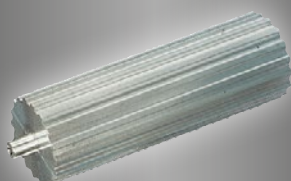
Aluminium UNI 3571 TA16



3M - Teilung 3 mm						5M - Teilung 5 mm					
Art. Nr.	Z	De	Dp	Lu	L	Art. Nr.	Z	De	Dp	Lu	L
9 HTD 3M	9	8,59	7,83	75	100	12 HTD 5M	12	19,10	17,96	150	165
10 HTD 3M	10	9,55	8,79	75	100	13 HTD 5M	13	20,69	19,55	150	165
11 HTD 3M	11	10,50	9,74	75	100	14 HTD 5M	14	22,28	21,14	175	183
12 HTD 3M	12	11,46	10,70	100	125	15 HTD 5M	15	23,87	22,73	175	183
13 HTD 3M	13	12,41	11,65	100	125	16 HTD 5M	16	25,46	24,32	175	183
14 HTD 3M	14	13,37	12,61	100	125	17 HTD 5M	17	27,06	25,92	175	183
15 HTD 3M	15	14,32	13,56	100	125	18 HTD 5M	18	28,65	27,51	200	200
16 HTD 3M	16	15,28	14,52	125	155	19 HTD 5M	19	30,24	29,10	200	200
17 HTD 3M	17	16,23	15,47	125	155	20 HTD 5M	20	31,83	30,69	200	200
18 HTD 3M	18	17,19	16,43	125	155	21 HTD 5M	21	33,42	32,28	200	200
19 HTD 3M	19	18,14	17,38	125	155	22 HTD 5M	22	35,01	33,87	200	200
20 HTD 3M	20	19,10	18,34	150	165	23 HTD 5M	23	36,61	35,47	200	200
21 HTD 3M	21	20,05	19,25	150	165	24 HTD 5M	24	38,20	37,06	200	200
22 HTD 3M	22	21,01	20,25	150	165	25 HTD 5M	25	39,79	38,65	200	200
23 HTD 3M	23	21,96	21,20	150	165	26 HTD 5M	26	41,38	40,24	200	200
24 HTD 3M	24	22,92	22,16	150	165	27 HTD 5M	27	42,97	41,83	200	200
25 HTD 3M	25	23,87	23,11	150	165	28 HTD 5M	28	44,56	43,42	200	200
26 HTD 3M	26	24,83	24,07	150	165	29 HTD 5M	29	46,15	45,01	200	200
27 HTD 3M	27	25,78	25,02	150	165	30 HTD 5M	30	47,75	46,60	200	200
28 HTD 3M	28	26,74	25,98	150	165	31 HTD 5M	31	49,34	48,20	200	200
29 HTD 3M	29	27,69	26,93	150	165	32 HTD 5M	32	50,93	49,79	200	200
30 HTD 3M	30	28,65	27,89	175	183	33 HTD 5M	33	52,52	51,38	200	200
31 HTD 3M	31	29,60	28,84	175	183	34 HTD 5M	34	54,11	52,97	200	200
32 HTD 3M	32	30,56	29,80	175	183	35 HTD 5M	35	55,70	54,56	200	200
33 HTD 3M	33	31,54	30,75	175	183	36 HTD 5M	36	57,30	56,16	200	200
34 HTD 3M	34	32,47	31,71	175	183	38 HTD 5M	38	60,48	59,34	200	200
35 HTD 3M	35	33,42	32,66	175	183	40 HTD 5M	40	63,66	62,52	200	200
36 HTD 3M	36	34,38	33,62	200	200	42 HTD 5M	42	66,85	65,71	200	200
37 HTD 3M	37	35,33	34,57	200	200	44 HTD 5M	44	70,03	68,89	200	200
38 HTD 3M	38	36,29	35,53	200	200	45 HTD 5M	45	71,62	70,48	200	200
39 HTD 3M	39	37,24	36,48	200	200	46 HTD 5M	46	73,21	72,07	200	200
40 HTD 3M	40	38,20	37,44	200	200	48 HTD 5M	48	76,39	75,25	200	200
42 HTD 3M	42	40,11	39,34	200	200	50 HTD 5M	50	79,58	78,43	200	200
44 HTD 3M	44	42,02	41,26	200	200	54 HTD 5M	54	85,94	84,80	200	200
45 HTD 3M	45	42,97	42,21	200	200	60 HTD 5M	60	95,49	94,35	200	200
48 HTD 3M	48	45,84	45,08	200	200	62 HTD 5M	62	98,68	97,54	200	200
50 HTD 3M	50	47,75	46,99	200	200	72 HTD 5M	72	114,59	113,45	200	200
52 HTD 3M	52	49,66	48,90	200	200						
54 HTD 3M	54	51,57	50,81	200	200						
56 HTD 3M	56	53,48	52,72	200	200						
60 HTD 3M	60	57,30	56,54	200	200						
62 HTD 3M	62	59,21	58,45	200	200						
64 HTD 3M	64	61,12	60,36	200	200						
66 HTD 3M	66	63,03	62,27	200	200						
68 HTD 3M	68	64,94	64,18	200	200						
70 HTD 3M	70	66,85	66,09	200	200						
72 HTD 3M	72	68,75	67,99	200	200						

**MATERIAL:**

Stahl



**8M 8mm Teilung**

Art. Nr.	Z	De	Lu	L
18 HTD 8M	18	44,47	200	200
19 HTD 8M	19	47,01	200	200
20 HTD 8M	20	49,56	200	200
21 HTD 8M	21	52,11	200	200
22 HTD 8M	22	54,65	200	200
23 HTD 8M	23	57,20	200	200
24 HTD 8M	24	59,75	200	200
25 HTD 8M	25	62,29	200	200
26 HTD 8M	26	64,84	200	200
28 HTD 8M	28	69,93	200	200
30 HTD 8M	30	75,02	200	200
32 HTD 8M	32	80,12	200	200
34 HTD 8M	34	85,21	200	200
35 HTD 8M	35	87,76	200	200
36 HTD 8M	36	90,30	200	200
38 HTD 8M	38	95,40	200	200
40 HTD 8M	40	100,49	200	200
44 HTD 8M	44	110,68	200	200
48 HTD 8M	48	120,86	200	200

