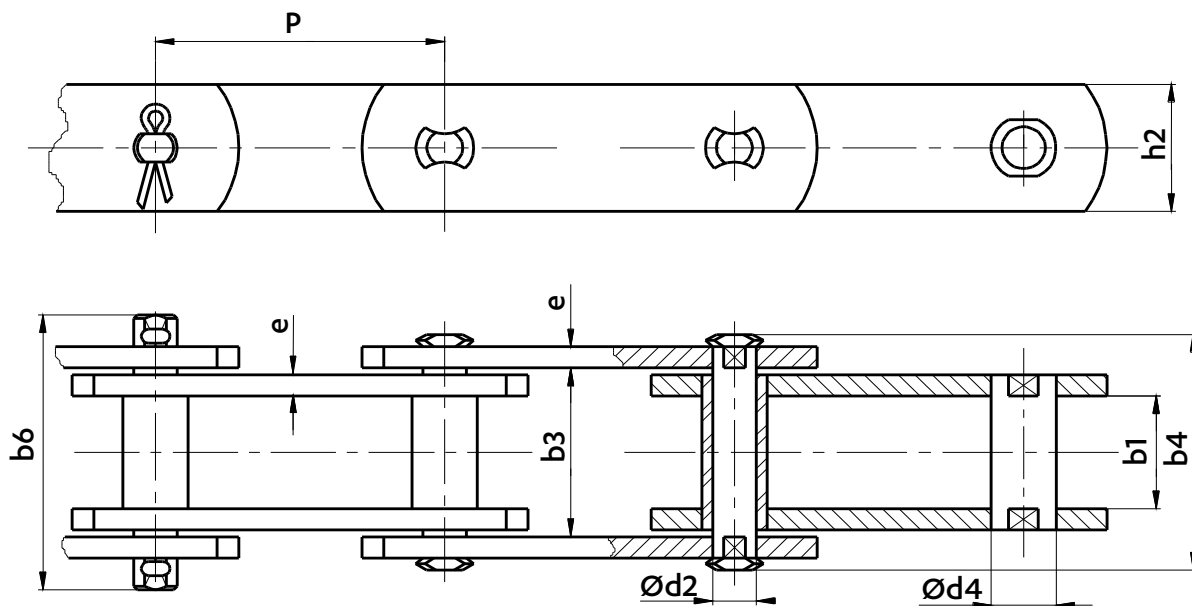


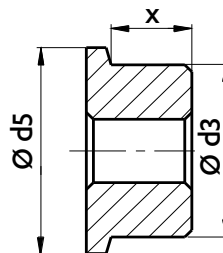
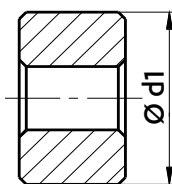
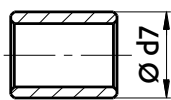
MV CONVEYOR CHAINS

DIN 8165 & ISO 1977

Dimensions en mm



ARTICULATIONS



WITH SMALL ROLLERS

S

WITH PLAIN WHEELS

P

WITH FLANGED WHEELS

F

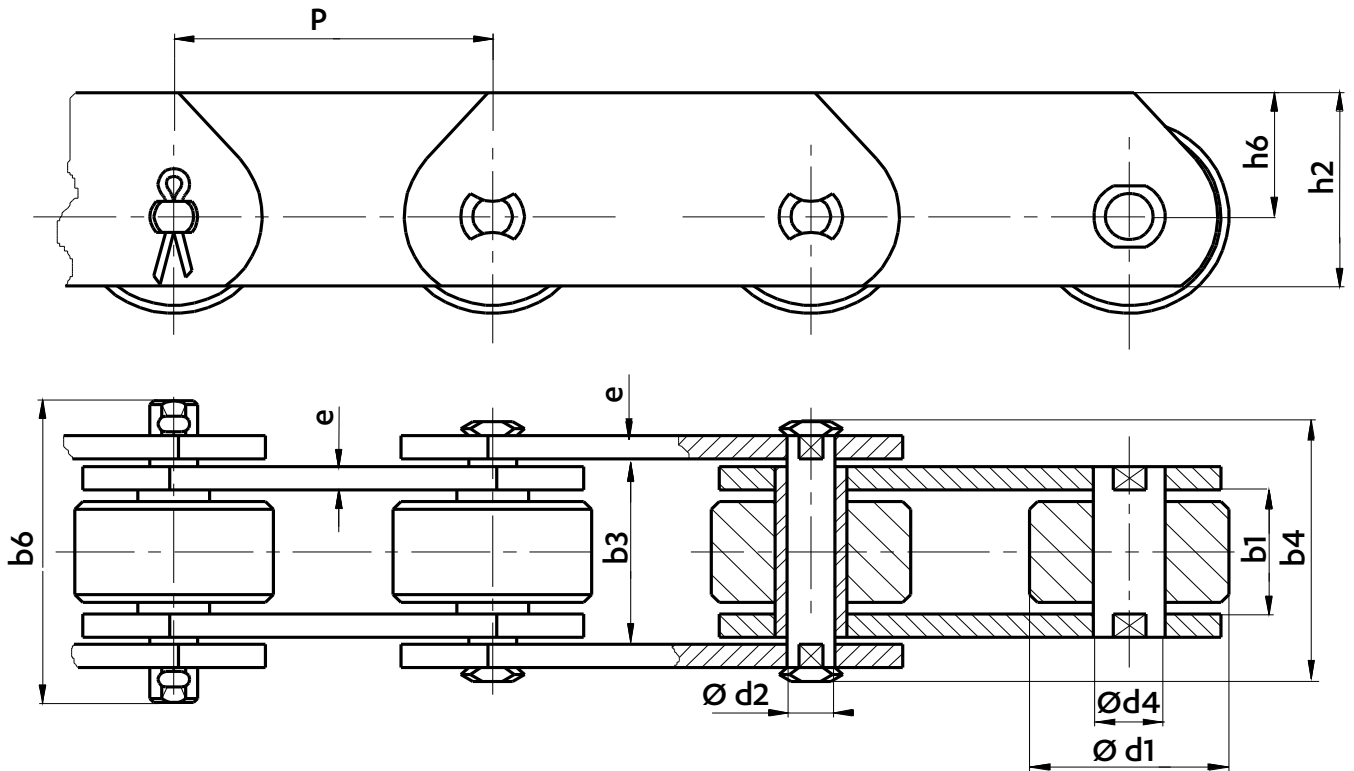
Type of articulation

Type of chain		Pitch								PLATES		ARTICULATION							WIDTH				Breaking load kN
1*	2*	P								Height	Thickness	Pin Ø	Bush Ø	Roller Ø	Wheel Ø	Flanged wheel Ø	flanged wheel width	between inner plates	between outer plates	over the flattened pins	over the cotted pins		
		P								h2 nom.	e nom.	d2	d4	d7	d1	d3	d5	x	b1 min	b3 min	b4 max.	b6 max.	
MV 56	MVS 56	63	80	100	125	160	200	250	30	4,0	10,0	15,0	21,0	42	42	50	17,5	24	33,3	52	72	56	
MV 80	MVS 80	80	100	125	160	200	250	315	35	5,0	12,0	18,0	25,0	50	50	60	20,5	28	39,4	62	86	80	
MV 112	MVS 112	80	100	125	160	200	250	315	40	6,0	15,0	21,0	30,0	60	60	70	23,0	32	45,5	73	101	112	
MV 160	MVS 160	100	125	160	200	250	315	400	50	7,0	18,0	25,0	36,0	70	70	85	26,5	37	52,5	85	117	160	
MV 224	MVS 224	125	160	200	250	315	400	500	60	8,0	21,0	30,0	42,0	85	85	100	31,0	43	60,6	98	134	224	
MV 315	MVS 315	160	200	250	315	400	500	630	70	10,0	25,0	36,0	50,0	100	100	120	34,0	48	70,7	112	154	315	
MV 450	MVS 450	-	200	250	315	400	500	630	80	12,0	30,0	42,0	60,0	120	120	140	37,0	56	82,8	135	185	450	
MV 630	MVS 630	-	200	250	315	400	500	630	100	14,0	36,0	50,0	70,0	140	140	170	45,0	66	97,0	147	200	630	
MV 900	MVS 900	-	-	250	315	400	500	630	120	16,0	44,0	60,0	85,0	170	170	210	54,0	78	113,0	167	220	900	

* TYPE 1 : Chains with flattened pins and bushes (for wood industry)

* TYPE 2 : Chains with flattened and welded pins and bushes (for wood industry)

Dimensions en mm

CHAIN TYPE P WITH PLAIN WHEELS


Type of chain		Pitch							PLATES			ARTICULATION			WIDTH				Breaking load Rr min. kN
1*	2*	P							Height h2 nom.	Height h6 nom.	Thickness e nom.	Pin Ø d2	Bush Ø d4	Wheel Ø d1	between inner plates	between outer plates	over the flattened pins	over the cotted pins	
MV 56/D	MVS 56/D	63	80	100	125	160	200	250	45	30	4,0	10,0	15,0	42	24	33,3	52	72	56
MV 80/D	MVS 80/D	80	100	125	160	200	250	315	50	32,5	5,0	12,0	18,0	50	28	39,4	62	86	80
MV 112/D	MVS 112/D	80	100	125	160	200	250	315	60	40	6,0	15,0	21,0	60	32	45,5	73	101	112
MV 160/D	MVS 160/D	100	125	160	200	250	315	400	70	45	7,0	18,0	25,0	70	37	52,5	85	117	160
MV 224/D	MVS 224/D	125	160	200	250	315	400	500	90	60	8,0	21,0	30,0	85	43	60,6	98	134	224
MV 315/D	MVS 315/D	160	200	250	315	400	500	630	100	65	10,0	25,0	36,0	100	48	70,7	112	154	315
MV 450/D	MVS 450/D	-	200	250	315	400	500	630	120	80	12,0	30,0	42,0	120	56	82,8	135	185	450
MV 630/D	MVS 630/D	-	200	250	315	400	500	630	140	90	14,0	36,0	50,0	140	66	97,0	147	200	630
MV 900/D	MVS 900/D	-	-	250	315	400	500	630	180	120	16,0	44,0	60,0	170	78	113,0	167	220	900

* TYPE 1 : Chains with flattened pins and bushes (for wood industry)

* TYPE 2 : Chains with flattened and welded pins and bushes (for wood industry)