

ACCUMULATOR CHAINS - Basic chains comply with ISO 606

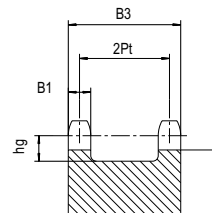
APPLICATIONS

Conveying of support tables, of pallets, skid conveyors. These conveyor systems rest on rollers (side or central) and can be stopped and accumulated while the chain retains a constant linear speed.



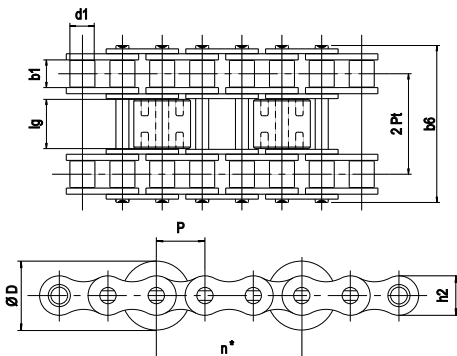
The central rollers are made of **steel or plastic**.
Two solutions to improve the acceleration of loads:
1- The use of central roller **TURNING** around **BUSH**,
2- The use of **BRAKING CLIPS** to brake the rotation of central rollers.
Please, consult us.

CORRESPONDING SPROCKET



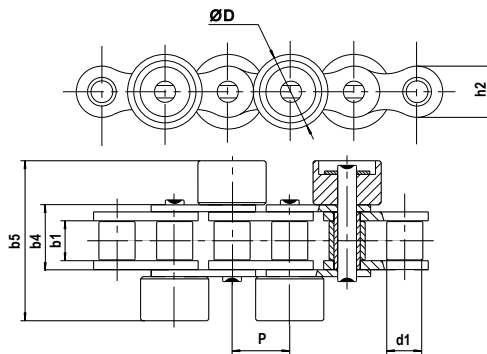
Chain reference		Pitch	2Pt	B1	B3	hg
ISO 606	SEDIS	mm				min.
06B-3	303N	9,525	20,48	5,2	25,6	8,0
08B-3	307N	12,7	27,84	7,0	34,9	10,0
10B-3	311N	15,875	33,18	9,0	42,1	12,0
12B-3	313N	19,05	38,92	10,8	49,8	15,0
16B-3	315T	25,4	63,76	15,8	76,6	18,5
20B-3	317T	31,75	72,90	18,2	91,0	23,5
24B-3	318T	38,1	96,72	23,6	120,3	26,0

TYPE A



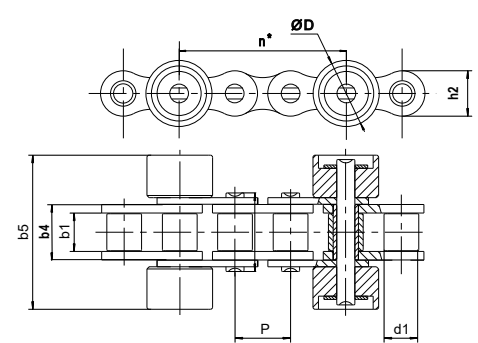
Distinctive feature: *n = Number of pitches P between 2 rollers
n minimum = 2
Frequency «n» to be precised

TYPE C



Distinctive feature: Mounting of rollers alternatively
every pitch allows transportation of short loads

TYPE D



Distinctive feature: *n = Number of pitches between 2 rollers
n minimum = 2
Frequency «n» to be precised

Dimensions in mm

References		Pitch	SEDIS RANGES				d1	ØD	lg	b1	b4	b5	b6	Pt	Ultimate Tensile Strength (kN)			
ISO 606	SEDIS		ALPHA Premium	DELTA® HR	DELTA TITANIUM 2	VERTE CHAINS									ALPHA Premium	DELTA® HR	DELTA TITANIUM 2	VERTE CHAINS
		P				max.		min.	min.	max.	max.	max.						
TYPE A																		
06B-3	303N	9,525	x	x	x		6,35	14,0	7,4	5,77	.	.	33,00	10,24	17,6	18,0	18,0	.
08B-3	307N	12,7	x	x	x	(1)	8,51	18,0	9,9	7,75	.	.	44,60	13,92	36,4	36,4	36,4	33,2
10B-3	311N	15,875	x	x	x	(1)	10,16	22,0	11,7	9,65	.	.	52,30	16,59	46,0	46,0	46,0	37,2
12B-3	313N	19,05	x	x	x	(1)	12,07	28,0	15,5	19,0	11,68	.	.	61,40	19,46	61,0	61,0	61,0
16B-3	315T	25,4	x	x	x	(1)	15,88	35,0	24,4	17,02	.	.	99,90	31,88	132,0	150,0	150,0	132,0
20B-3	317T	31,75	x	x	x		19,05	45,0	35,1	19,56	.	.	116,10	36,45	210,0	220,0	220,0	.
24B-3	318T	38,1	x	x	x		25,40	50,0	47,0	25,40	.	.	150,20	48,36	360,0	360,0	360,0	.
TYPE C																		
08B	7N	12,7	x	x	x		8,51	15,8	.	7,75	16,60	33,00	.	.	18,2	18,2	18,2	.
10B	11N	15,875	x	x	x		10,16	22,0	.	9,65	19,00	42,00	.	.	23,0	23,0	23,0	.
12B	13N	19,05	x	x	x		12,07	25,0	.	11,68	22,30	48,00	.	.	30,5	30,5	30,5	.
TYPE D																		
08B	7N	12,7	x	x	x		8,51	15,8	.	7,75	16,60	33,00	.	.	18,2	18,2	.	.
10B	11N	15,875	x	x	x		10,16	22,0	.	9,65	19,00	42,00	.	.	23,0	23,0	.	.
12B	13N	19,05	x	x	x		12,07	25,0	.	11,68	22,30	48,00	.	.	30,5	30,5	.	.

(1): References in Lub Free version. Delta® VERTE version on request.

Many other possible versions. Consult us.