

APPLICATIONS

These chains are usually used for small conveyors using two chains moving on a rail guided by rollers and vertical lugs.



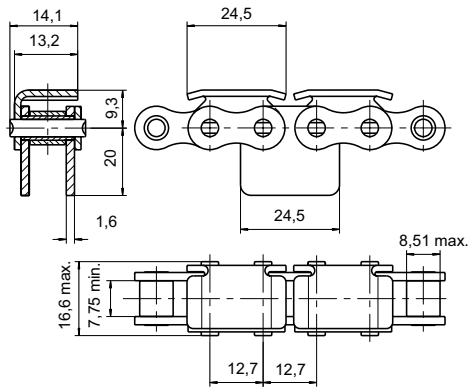
This type of chain is ideal for conveying components which can be accumulated on the conveyor, the chain continuing movement while the parts slide on the "flanged" attachments.

E.g. conveying motor vehicle parts.

Duplex and triplex chains also available

CHAIN 7N (O8B-1) (DRAWING: 5272-70)

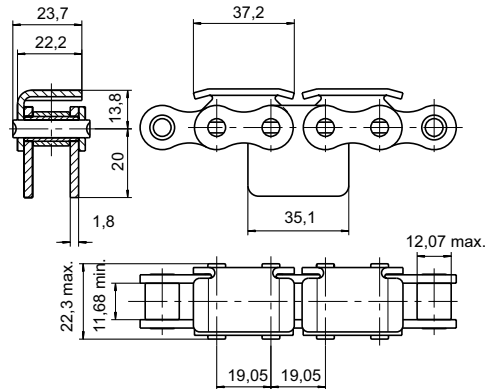
UTS min. = 18.2 kN



Vertical guide plates on request

CHAIN 13N (12B-1) (DRAWING 5268-27)

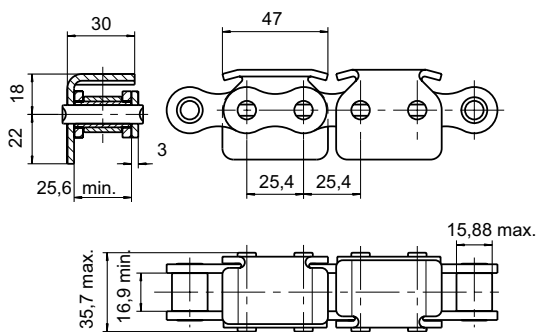
UTS min. = 30.5 kN



Vertical guide plates on request

CHAIN 15T (16B-1) (DRAWING 5288-03)

UTS min. = 66 kN



CHAIN 40-1 (O8A-1) (DRAWING 5415-08)

UTS min. = 16.5 kN

