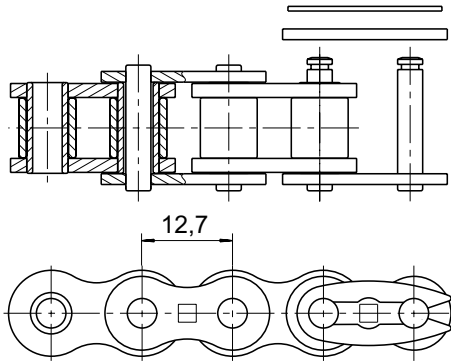


CHAIN 7N (08B-1)

drawing: 5272-74



Radius of the installation: R = 400mm min



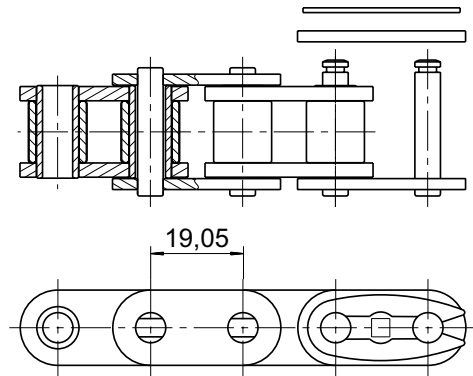
**Average chain pitch =
12,94mm**

To be used with the sprockets of 7N chain with 17 teeth maximum

CHAIN 60-1NE (12A-1)

drawing: 5312-53

Example: conveyor of bottles for bottling lines



Radius of the installation: R = 650mm min

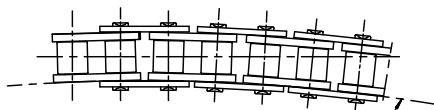
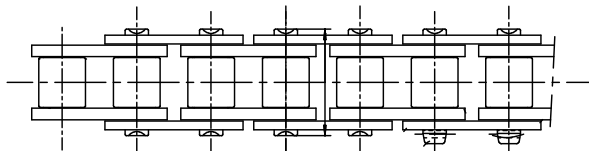
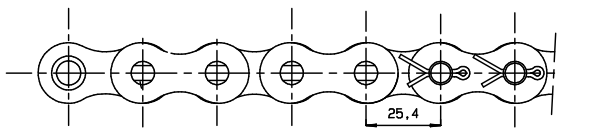


**Average chain pitch =
19,3mm**

To be used with the sprockets of 60-1NE chain with 17 teeth maximum

CHAIN 15T (16B-1)

drawing: 5811-32

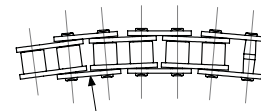
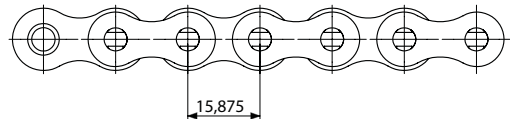
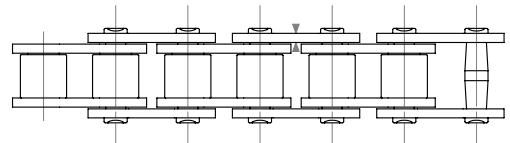


Radius of the installation: R = 3000mm min

CHAIN 50-1

«BARREL» SHAPED PINS

drawing: 5245-58



Radius of the installation: R = 400mm min

80-1 version with «barrel» shaped pins: 5294-33