

APPLICATIONS

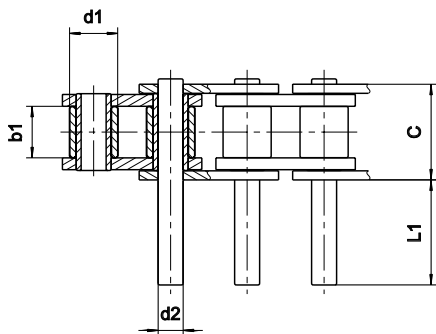
Light conveyor, to transfer parts to different workstations, conveyors, indexing mechanisms and lifting installations.

DESPATCH POSSIBLE WITHIN 48 HOURS  
for highlighted references    
50M MAXIMUM (consult us)

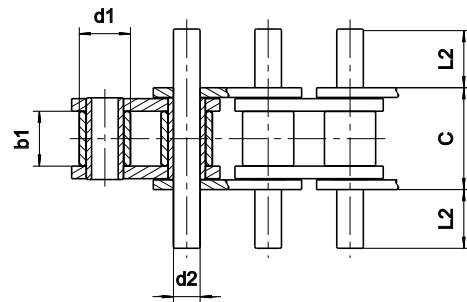


The main advantage of this type of conveyor chain is that the effort is applied without torque in the center of the chain. These pins are fitted on request according to the chosen position to be specified when ordering.

OFF-SET



SYMETRICAL



Dimensions in mm

References		Pitch	SEDIS RANGE					d1	b1	c	d2	L1							L2									
ISO 606	SEDIS		ALPHA Premium	ALPHA Premium INOX	DELTA® HR	DELTA Titanium 2	CHAIN VERTE					max.	min.	max.	max.													
06B-1	3N	9,525	x		x	x		6,35	5,77	11,01	3,28	11,1	21,7								5,8	11,1						
08B-1	7N	12,7	x	x	x	x	(1)	8,51	7,75	14,43	4,45	3,5	15,2	29,2							2,2	8,1	15,1					
10B-1	11N	15,875	x	x	x	x	(1)	10,16	9,65	16,95	5,08	4,3	11,2	17,8	21	24,8	34,4	39,1			2,6	6,1	9,4	11,0	12,9	17,7	20,0	
12B-1	13N	19,05	x	x	x	x	(1)	12,07	11,65	19,75	5,72	10,4	14,1	20,9	40,5						5,8	7,6	11,0	20,8				
16B-1	15T	25,4	x	x	x	x	(1)	15,88	17,02	32,09	8,28	8,7	18,7	21,9	33,3	65	98,4	130,3	194		5,0	10,0	11,6	17,3	33,2	49,9	65,8	97,6
20B-1	17T	31,75	x	x	x	x	(2)*	19,05	19,56	36,80	10,19	6,6	10,3	14,0	21,5	25,4	38,4	54,4	74,9		4,2	6,0	7,9	11,6	13,6	20,1	28,1	38,3
24B-1	18T	38,1	x	x	x	x	(2)*	25,40	25,40	48,72	14,63	11,7	16,9	37,4	51,1	58,3	79,7	99,5	341,4		6,8	9,4	19,7	26,5	30,1	40,8	50,7	171,7
28B-1	20T	44,45	x		x	x	(2)	27,94	30,99	60,00	15,90	22,0	48,1	62,5	122,4						12,1	25,2	32,4	62,3				
32B-1	22T	50,8	x		x	x	(2)	29,21	30,99	58,62	17,81	19,5	61,8	44,2	69,0	120,7	179,3	294,6		10,9	32,1	23,3	35,7	61,5	90,8	148,7		
40B-1	23T	63,5	x		x	x	(2)	39,37	38,10	72,70	22,89	30,0	62,2	76,4	149,0	221,4	294,4			16,5	32,6	39,7	76,0	112,2	148,7			
48B-1	24T	76,2	x		x	x		48,26	47,70	91,40	29,22	35,5	95,7	186,9							19,4	49,5	95,1					

(1): References in Lub Free. In DELTA® VERTE please consult us

(2): Only available in DELTA® VERTE

\* The pin diameter is different. Please consult us.

To know chains' UTS, see tables on pages 18 and 19.

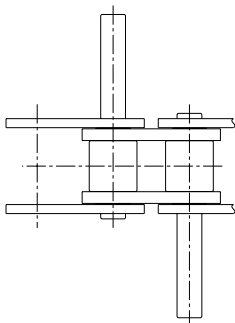
Other possibilities:

- Execution on double strand chains
- Execution on ANSI - American series

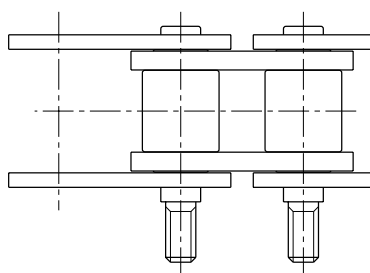
MATCHING POSSIBLE FOR HIGHER ACCURACY

OTHER SPECIAL EXTENDED PINS

ALTERNATELY OFF-SET PINS



THREADED PINS



CONNECTING PINS

