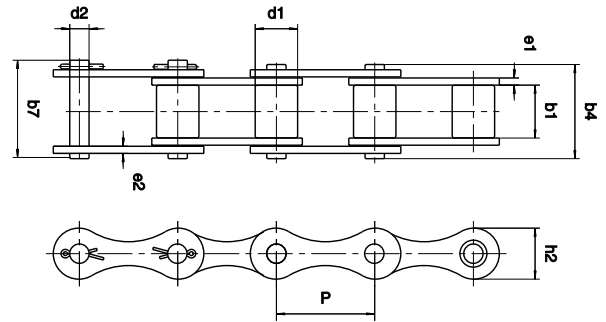
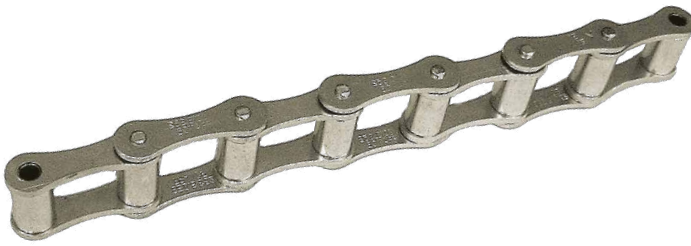


ROLLER CHAIN ISO 487 S TYPE CHAINS - comply with ISO 487 international standard



- Chains S55 and S62 are fitted with large rollers $d1 > h2$
- These chains are zinc plated

Dimensions in mm

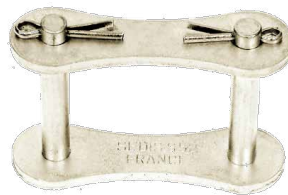
References	Pitch P	d1 max.	b1 min.	b4 max.	b7 max.	d2 max.	h2 max.	e1	e2	UTS min. kN	Mass per meter kg
								max.			
S52	38,1	15,20	22,20	37,3	42,5	5,78	17,20	3,06	2,60	27	1,6
S45	41,4	15,20	22,20	37,3	42,5	5,78	17,20	3,06	2,60	23	1,5
S55	41,4	17,80	22,20	37,3	42,5	5,78	17,20	3,06	2,60	23	1,8
S55R	41,4	17,80	22,20	39,5	43,0	8,13	21,66	3,15	3,15	45	2,4
S62	41,9	19,00	25,40	40,5	45,7	5,78	17,20	3,06	2,60	29	2,2

CONNECTING LINKS

CRANKED LINK



N°205: Outer link to rivet



N°208: Cottered link



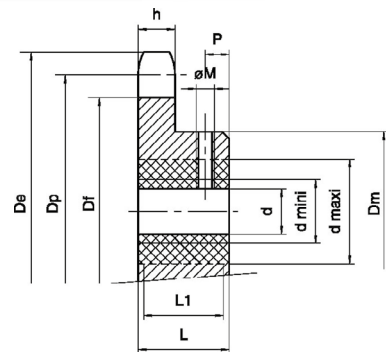
N°216: Single crank cottered link

STANDARD SPROCKETS FOR CHAINS S55

Shapes and profiles of teeth comply with NFE 23-105 standard

MANUFACTURING

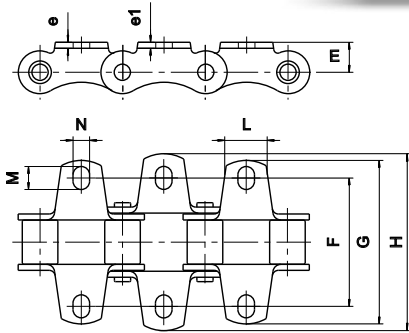
- Material: cast iron (as-cast including teeth)
- On request, we can finish these parts according to dimensions L1, d, ΦM and P given in the right hand columns of the table, and all pin grooves (table hereafter)
- Keyways also possible



Dimensions in mm

References	Number of teeth	SPROCKETS in STOCK							FINISHING (on request)				
		Dp	De	Df	d max.	h	Dm	L	L1	d min.	d max.	ΦM	p
9S55	9	122,0	133	105	20	18	85	50	47	25	50	M8	16
11S55	11	148,2	159	131	20	18	90	50	47	25	50	M8	16
13S55	13	174,5	186	157	20	18	100	56	53	25	60	M10	18
15S55	15	200,8	212	184	20	18	100	56	53	25	60	M10	18

FITTED WITH K1 ATTACHMENTS

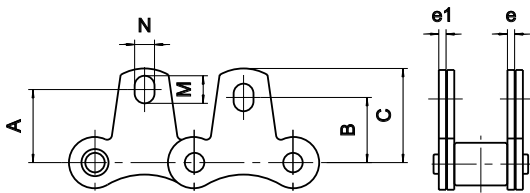


French standard: NFE 26-105

Dimensions in mm

References	E nom.	e nom.	e1 nom.	N min.	M min.	L nom.	F nom.	G max.	H max.
S52					9,9		59,0	77,5	77,5
S45	11,7	2,5	2,5	8,3	13,3	20	54,0	74,9	74,9
S55					13,3		54,0	74,9	74,9
S62					15,8		66,6	95,3	95,3
S55R	15,3	3,0	3,0	8,3	11,5	20	64,5	84,0	90,0

FITTED WITH M1 ATTACHMENTS

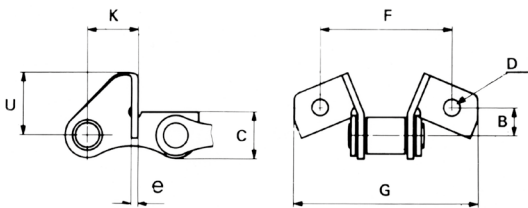


French standard: NFE 26-105

Dimensions in mm

References	A nom.	B nom.	C max.	e1 nom.	e nom.	M min.	N min.
S52	22,10	22,1	31,7			9,9	
S45	19,80	19,8	30,2	2,5	3	13,3	8,3
S55	19,80	19,8	30,2			13,3	
S62	24,60	24,6	38,6			15,8	
S55R	30,50	27,2	39,5	3,0	3	11,5	8,3

FITTED WITH SE ATTACHMENTS



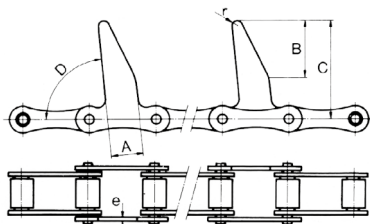
(on inner link only)

Dimensions in mm

References	B nom.	C nom.	e nom.	F nom.	G maxi	K nom.	U max.	D min.
S45								
S55	13,6	17,0	2,5	61,7	89,8	24,0	28,0	9,0

FITTED WITH HOOKED PLATES

Use on loaders-collectors of bales of hay, straw, etc...

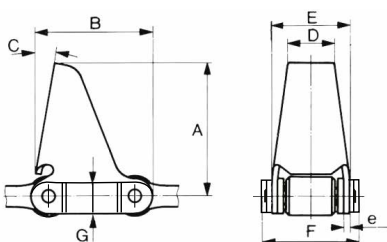


Dimensions in mm

References	A nom.	B nom.	C nom.	D	e nom.
S45	20	35	61,5	85°	2,5
S52	20	35	61,5	85°	2,5
S55	20	35	61,5	85°	3,0

FITTED WITH SCOOPED PLATES AND TREATED EXTERNAL SCRAPING PLATES

Used for harvesting maize (corn)



(on outer link only)

Dimensions in mm

References	A	B	C	D	E	F	G	e
S62	65,0	57,2	11°	23	38	49	17,2	3