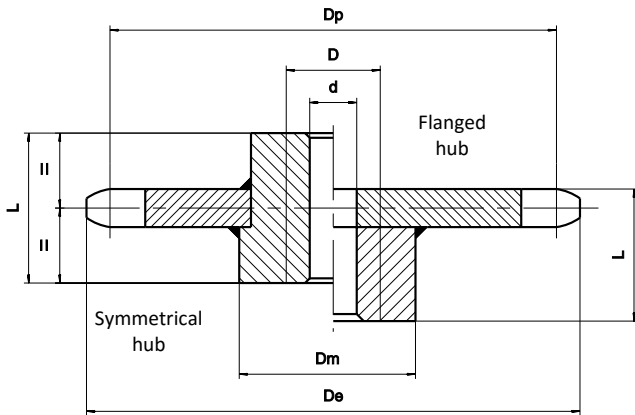


WHEELS AND SPROCKETS FOR CONVEYOR CHAINS

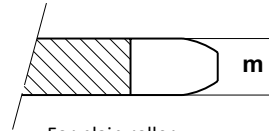
BS STANDARD CHAINS



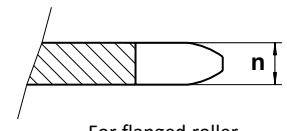
All our wheels are manufactured with a raw oxygen cutting or foundry tooth for chains fitted with slide rollers and flanged rollers. Wheels for bush and roller chains are tooth milled. Our Standard wheels are manufactured with flanged hub with the possibility of wheels with symmetrical hub.

We supply upon request:

- wheels with machine cut teeth for chains mentioned below
- wheels with a different number of teeth
- special wheels



For plain roller



For flanged roller

Dimensions in mm

Chain reference	Pitch	Z	$D_p$	$D_e$	$d(H10)$ min.	$D$ max.	$D_m$	L	Mass kg	m	n	
M22	50	8	130,65	140	24	50	80	60	3	12,6	9,0	
		12	193,18	203	24	50	80	60	5			
	75	8	195,98	206	24	50	80	60	6	12,6	9,0	
		12	289,77	299	24	50	80	60	10			
	M35	100	8	261,31	271	24	50	80	60	9	12,6	9,0
			12	386,37	396	24	50	80	60	16		
		125	8	326,63	336	24	50	80	60	12	12,6	9,0
			12	482,96	492	24	50	80	60	21		
M35	50	8	130,66	145	25	35	70	40	2	12,0	10,0	
		12	193,19	208	30	50	100	50	5			
	60	8	156,79	172	25	50	100	50	4	12,0	10,0	
		12	231,82	247	30	60	115	65	8			
	M68	75	8	195,98	211	25	50	100	50	6	12,0	10,0
			12	289,78	304	30	60	115	65	11		
		100	8	261,31	276	30	60	115	65	9	12,0	10,0
			12	386,37	401	30	70	120	75	16		
M100	125	8	326,64	346	30	60	115	65	16	15,0	12,0	
		12	482,96	502	30	70	120	75	29			
	150	8	391,97	411	30	70	120	75	22	15,0	12,0	
		12	579,56	599	30	70	120	75	39			
	M140	75	8	195,98	217	25	50	100	50	7	18,0	13,5
			12	289,78	311	30	60	115	65	14		
		100	8	261,31	282	30	60	115	65	11	18,0	13,5
			12	386,37	407	30	70	120	75	20		
M200	125	8	326,64	347	30	60	115	65	16	18,0	13,5	
		12	482,96	504	30	70	120	75	29			
	150	8	391,97	413	30	70	120	75	22	18,0	13,5	
		12	579,56	600	30	70	120	75	39			
	M270	100	8	261,31	287	30	90	150	80	18	22,0	15,0
			12	386,37	412	30	90	150	80	28		
		125	8	326,64	352	30	90	150	80	20	22,0	15,0
			12	482,96	509	30	90	150	80	40		
M400	160	8	391,97	418	30	90	150	80	30	22,0	15,0	
		12	579,56	605	30	90	150	80	55			
	200	8	418,10	444	30	90	150	80	35	22,0	15,0	
		12	618,19	644	30	90	150	80	65			
	M270	150	8	522,63	548	30	90	150	80	45	32,0	25,0
			12	772,74	798	30	90	150	80	90		
		200	8	391,97	422	30	110	180	140	62	32,0	25,0
			12	579,56	610	30	110	180	140	116		
M400	250	8	522,63	553	30	110	180	140	114	32,0	25,0	
		12	772,74	803	30	110	180	140	184			
	150	8	653,28	684	30	110	180	140	134	32,0	25,0	
		12	965,93	996	30	110	180	140	224			
	M400	150	8	391,97	422	30	120	200	160	62	32,0	25,0
			12	579,56	610	30	120	200	160	116		
		160	8	418,10	449	30	120	200	160	66	32,0	25,0
			12	618,19	649	30	120	200	160	120		
M400	200	8	522,63	553	30	120	200	160	114	32,0	25,0	
		12	772,74	803	30	120	200	160	184			
	250	8	653,28	684	30	120	200	160	134	32,0	25,0	
		12	965,93	996	30	120	200	160	224			

These wheels are available with 10 and 16 teeth. Do not hesitate in consulting us. Dimensions subject to change. Please consult us for verification.