

sedis 

STEEL INDUSTRY

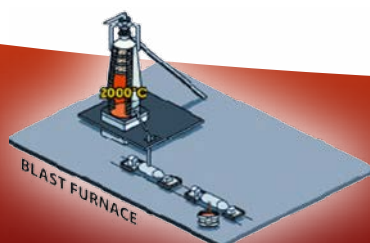
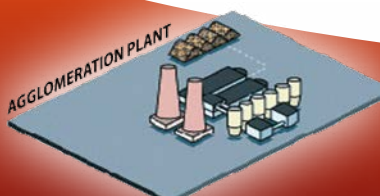
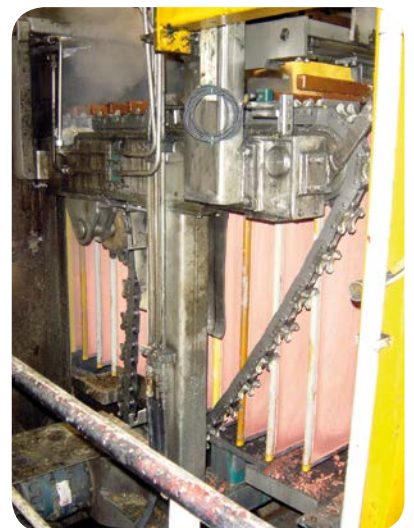
35, rue des Bas-Trévois
CS 90104 - 10003 Troyes Cedex - France
Tél : +33 (0)3 25 76 29 50 - Fax : +33 (0)3 25 80 31 62
web : www.sedis.com - e-mail : <https://sedis.com/contact>





In difficult operating conditions, you can rely on Sedis chains, which are always at the cutting edge of technology

Examples of applications



THE DELTA® RANGE

For extreme operating conditions

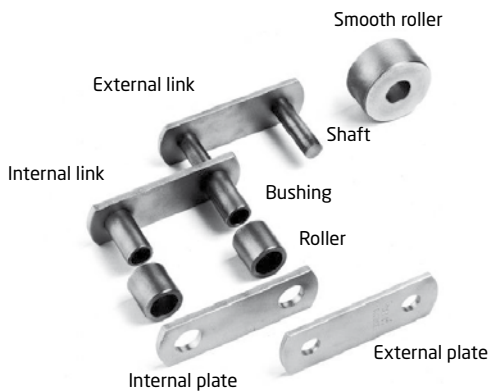
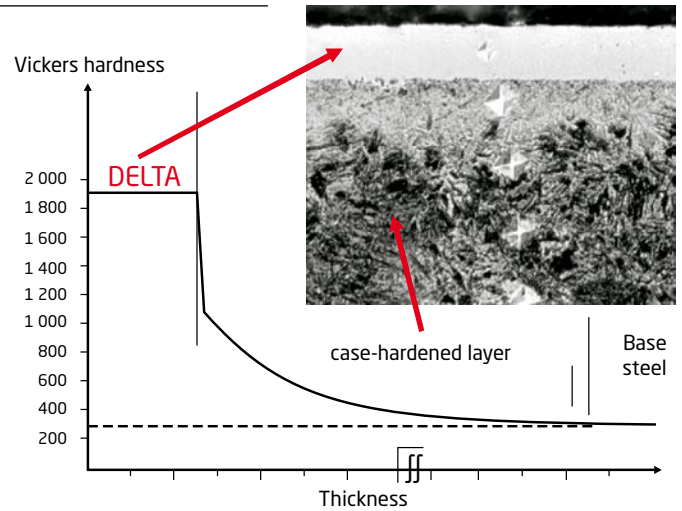


It is especially suitable for

- > Abrasive environments
- > High speeds
- > Hazardous or non-existent lubrication

What is the Delta treatment ?

A thermochemical treatment invented and implemented by **Sedis**, which is obtained after carburising, provides the chain's links with remarkable ability to withstand **abrasion** and **oxidation**. This ability is guaranteed by a surface hardness (**1900 Vickers**) that is almost 3 times higher than that obtained by using traditional carburisation (700 Vickers).



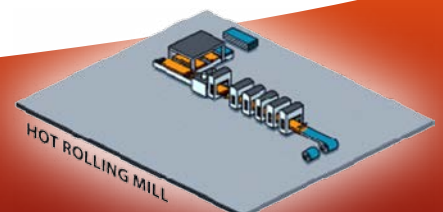
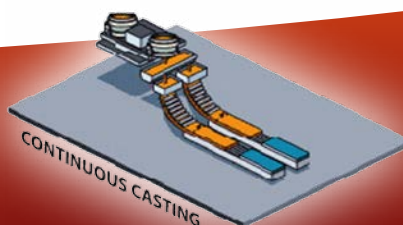
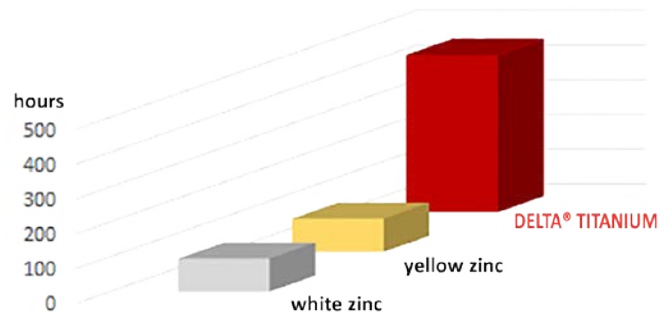
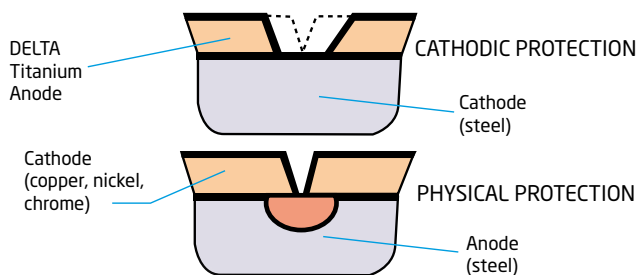
Where is the Delta® treatment used in the Sedis range ?

- > Transmission chains
- > Standard handling chains
- > Special handling chains

DELTA® TITANIUM 2 TREATMENT

> Corrosion resistance (Zinc & Aluminium coating)

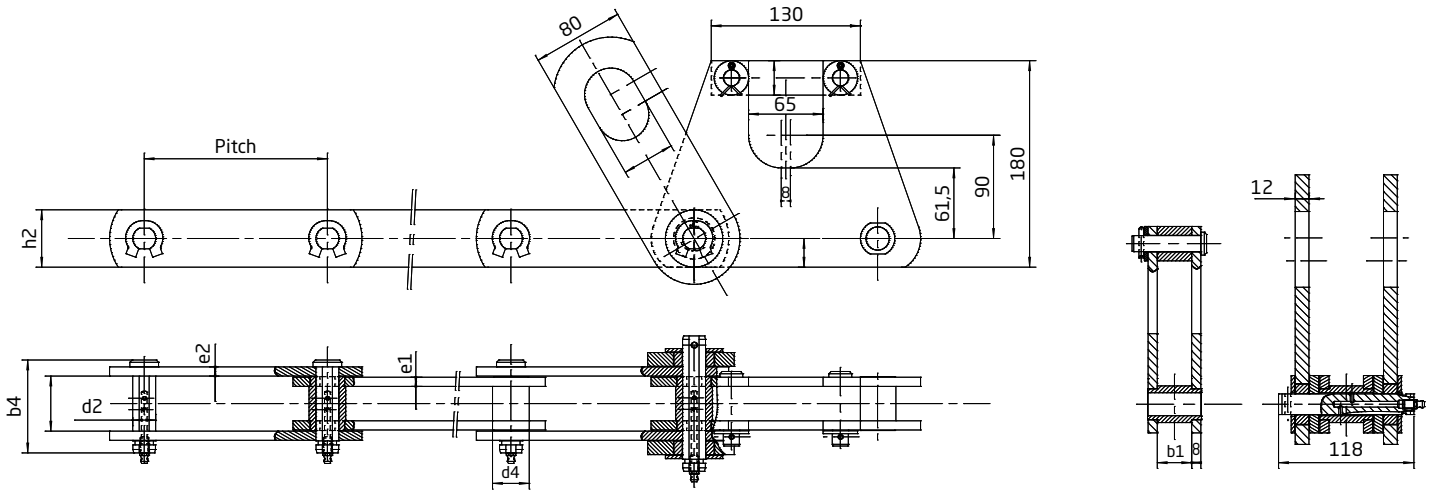
Cathodic protection for the metal parts in the chain



Agglomeration chains

Fitted with flat plate holders and tilt prevention plates.

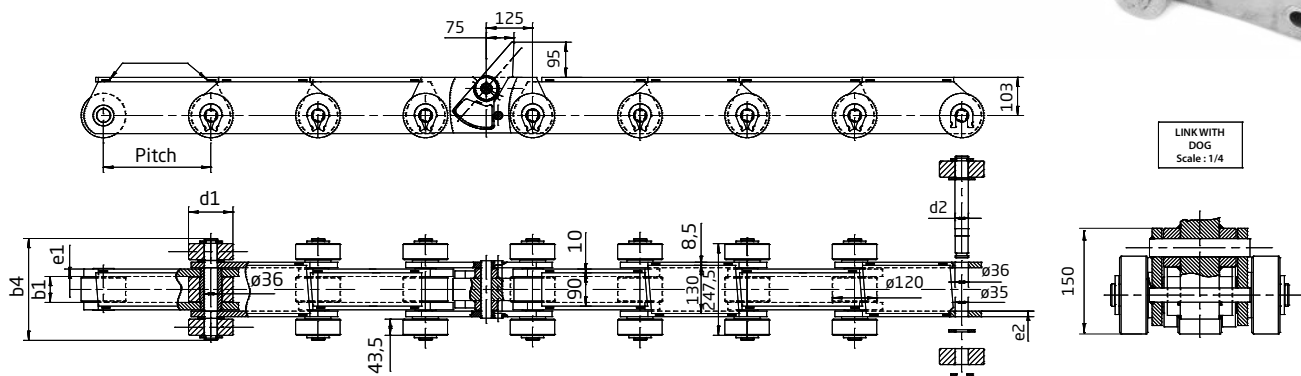
Ref	Pitch	h2	b4	e2	e1	b1	d2	d4
5479-39	160	50	81	8	8	30	20	32



Billet transport chains

Equipped with extended shafts with support rollers for bearing heavy loads, with off-centre plates with retractable pusher dogs and platforms.

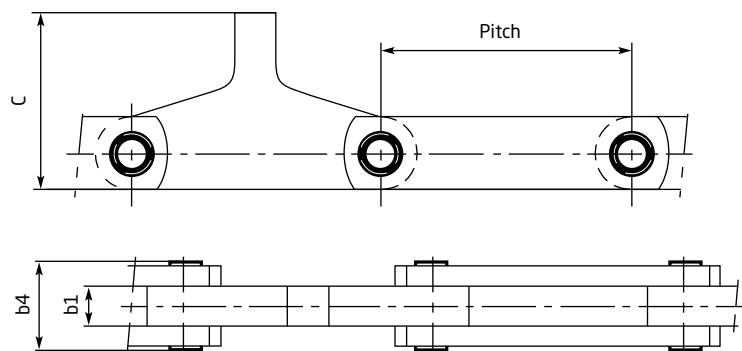
Ref	Pitch	b4	b1	e1	d1	d2	e2
5387-02	290	275	70	20	120	35	15



Shifting chains

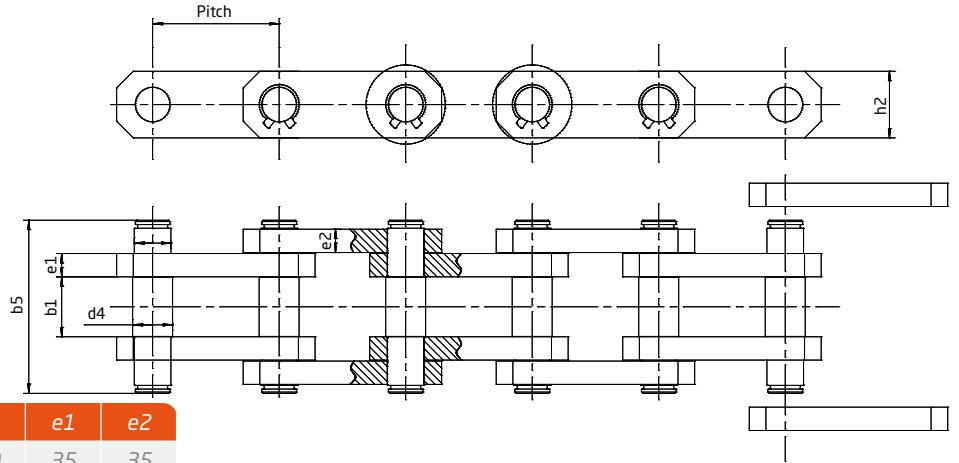
With fixed pusher blocks.

Ref	Pitch	C	b4	b1
5280-01	240	170	86,4	41



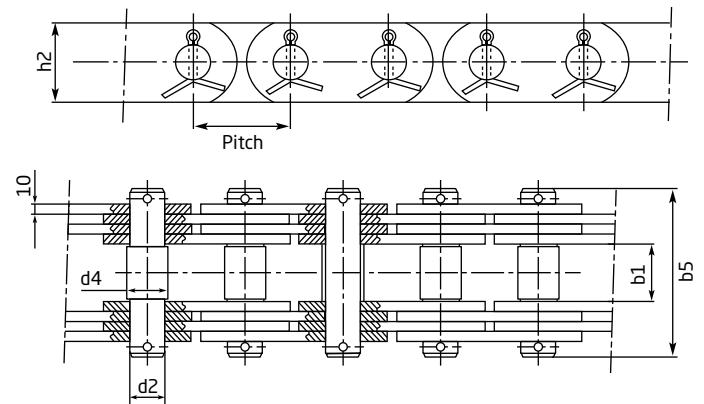
Drawing bench chains

Single link with a pitch of 190 mm for a 70-tonne drawing bench. Breaking strength of 350 tonnes.



Ref	Pitch	h2	b5	b1	d4	e1	e2
5945-02	190	100	260	90	60	35	35

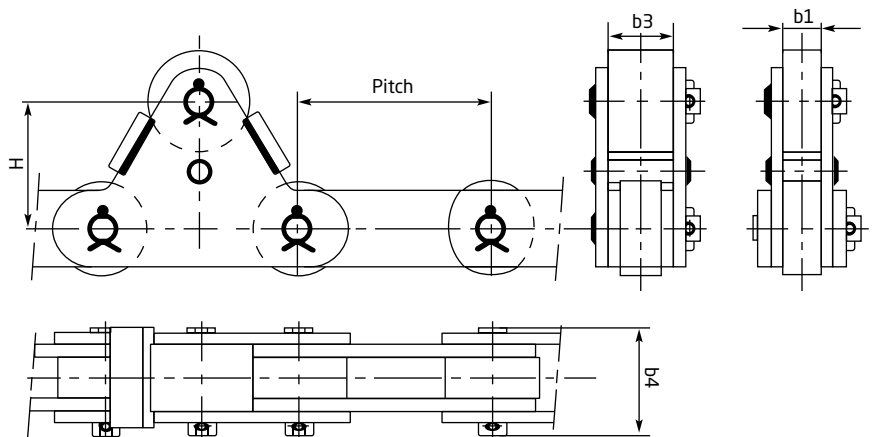
Double link with rollers makes it possible to eliminate stresses on the shaft due to riding on the shoulder and ensures the shaft has better fatigue strength.



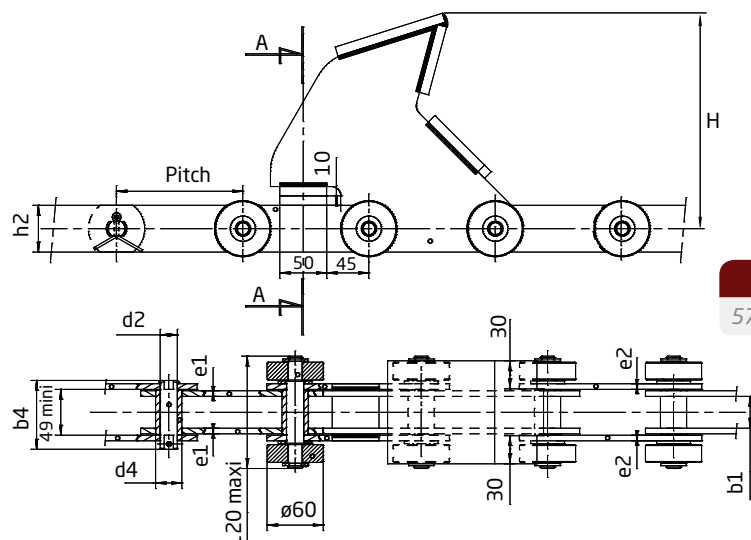
Pitch	h2	d4	d2	b1	b5
100	80	42	36	60	173

Transport chains for finished and semi-finished products

Pusher dogs with rollers for transporting tubes, allows the load to be distributed over several rollers.



Ref	Pitch	b3	b1	b4	H
5784-01	152,4	53	31	86	100



The use of extended shafts, guide rollers and bearing blocks for transporting tubes, ensures the load is distributed over several chains.

Ref	Pitch	h2	H	b4	d2	e1	e2	d4	b1
5707-13	135	50	231	73,5	18,3	6	6	28	34

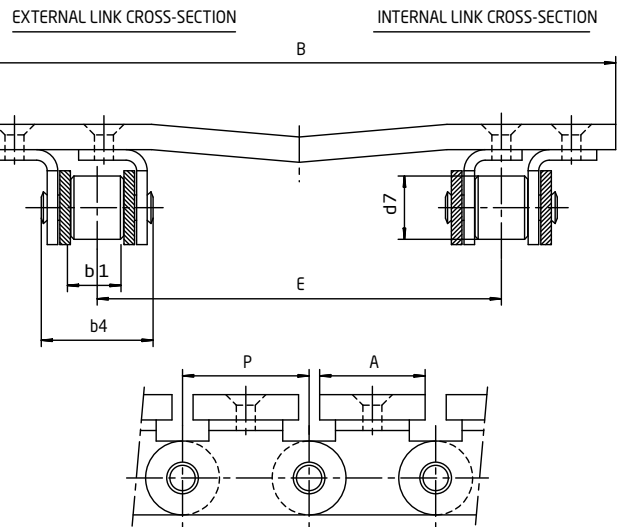


Accumulation tower chains

SEDIS has developed chains for this application have a high fatigue strength. In addition to the shafts having undergone DELTA® treatment. The shafts and plates are more tightly fitted in order to reduce problems with breakage caused by fatigue.

Chain for carrying reels

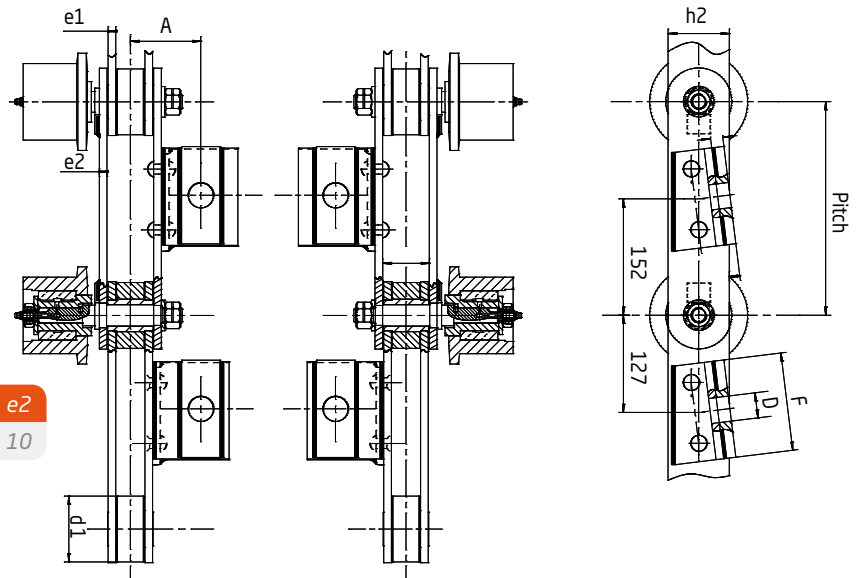
2 chains fitted in parallel, equipped with angle plates onto which V-shaped plates are mounted.



Pitch	b1	b4	d7	E	A	B
60	26,5	55,5	24	251,6	50	360
60	25,4	52	30	191,6	50	300
60	24,4	52	30	251,6	50	360

Chip conveyor chains

Fitted with tilted K1 angle brackets to enable the chips to be overlapped.



Ref	Pitch	h2	F	D	A	d1	e1	e2
5851-01	279	80	128	33	92	86	10	10

Accumulation chains

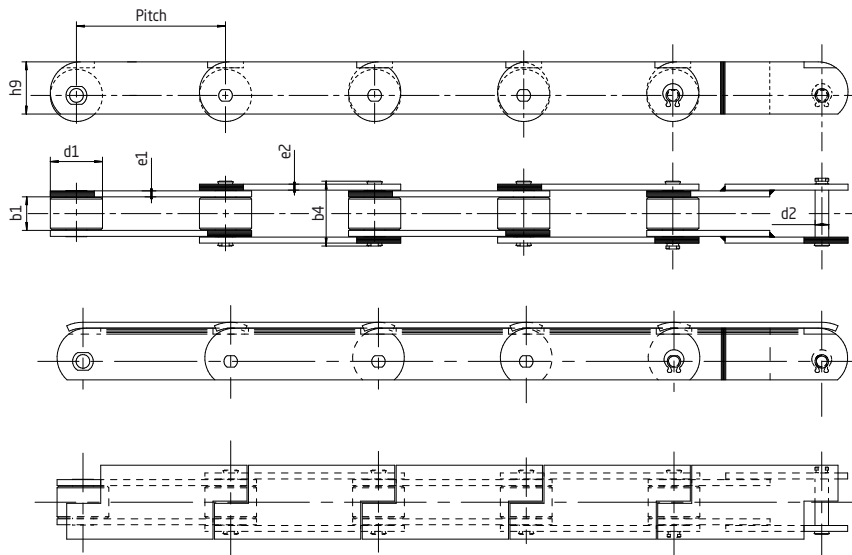
With off-centre plates, and fitted shafts that jut out and support rollers at each end. An accumulation roller in the middle of each link enables the chain to operate continuously.



Finished product transfer chains

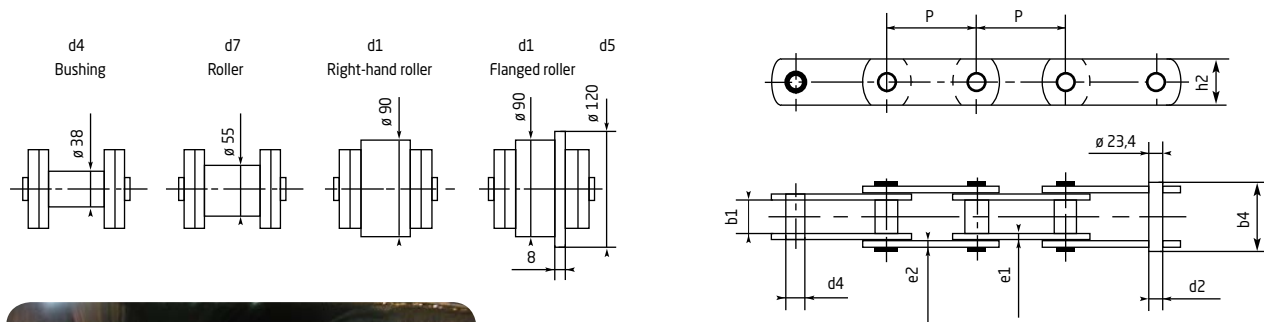
With special platforms on each pitch that eliminate any discontinuity in terms of the work surface and product marking.

Ref	Pitch	h9	d1	d2	b1	e1	e2	b4
5324-43	200	70	70	18,3	45	8	8	87



Chip conveyor chains

The chips are kept together in a mass by the hinge system, a rod passes through the hollow shaft of the 2 chains fitted in parallel.



h2	b1	b4	d4	e1	e2	d2
60	38	82	38	8	8	30

**OFFERS YOU MUCH
MORE THAN
CHAINS**



WHEELS > PINIONS > DISCS

- > Made from *STAINLESS STEEL*
- > Made from *STEEL*
- > Made from *CAST IRON*

Compatible with the chains in this brochure



CENTRAL LUBRICATION UNIT

- > *COMPACT*
- > *INNOVATIVE DISTRIBUTION FUNCTION*
- > *PRE-CONFIGURED INTERFACES*



ASSEMBLY AND DISASSEMBLY TOOL

If you do not want to use the clevis, we can offer you this tool which allows you to fasten and unfasten our chain

ON-SITE ASSEMBLY SERVICE

SEDIS SERVICE



Head Office : *SEDIS 35, rue des Bas-Trévois CS 90104 - 10003 Troyes - France*
Tel : +33 (0)3 25 76 29 50 - Fax : +33 (0)3 25 80 31 62

UK Subsidiary : *SEDIS Company Ltd - 248 Mackadown Lane, Kitts Green, Birmingham, B33 0LE*
Tel. +44 (0) 870 160 7840 - email: sales@sedis.co.uk

Web site : www.sedis.com - E-mail : <https://sedis.com/contact>